

Bloomfield Twp

A community you can LIVE in!

The Charter Township of Bloomfield, incorporated in 1827, was the first township to be established in Oakland County. Today, it encompasses 25 square miles and has a population of 43,000. The natural beauty of the township, with its winding roads, rolling hills and tranquil lakes, lends a uniquely attractive setting to the 17,000 fine homes and exclusive subdivisions within its boundaries. Classy and upbeat shopping are part of this prestigious residential community. Home to many Corporate America managers and business owners, success is the way of life in the Township of Bloomfield. Residential as well as retail development, has been strong since the mid 1980's and continues at a moderate pace providing luxury housing and business opportunities. The magnificent Kirk in the Hills Presbyterian Church is a striking landmark. Bloomfield Township is also home to many exclusive country clubs including the nationally known Oakland Hills Country Club.

Local Government

Supervisor

David Payne (248) 433-7708

Clerk

Janet Roncelli (248) 433-7702

Planner Director

Patricia McCullough (248) 433-7795

www.bloomfieldtwp.org/

Private Schools

Acadia Montessori School, Franklin Christian Pre School, The Lyceum Academy

Public School Enrollment

Does not include public school academies

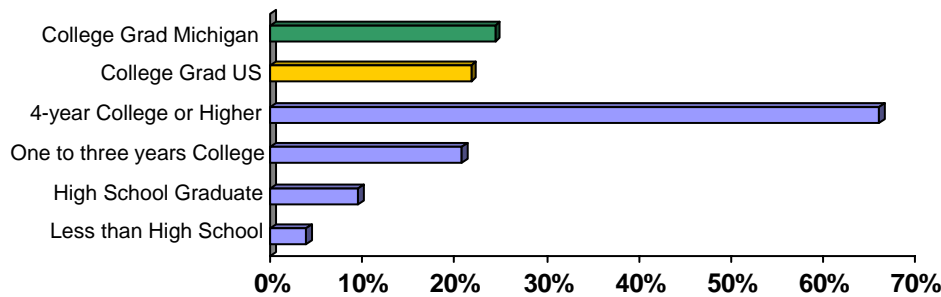
School District	Year	Enrollment
Avondale	2007	3902
Birmingham	2007	8129
Bloomfield Hills	2007	5911
Pontiac	2007	9042

2007 Tax Rates

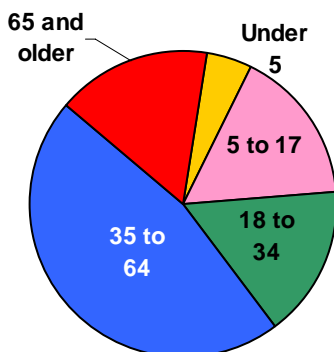
School District	Homestead	Non Homestead
Avondale	\$36.16	\$52.90
Birmingham	\$38.47	\$48.31
Bloomfield Hills	\$36.58	\$47.46
Pontiac	\$28.66	\$46.66

Colleges and Universities

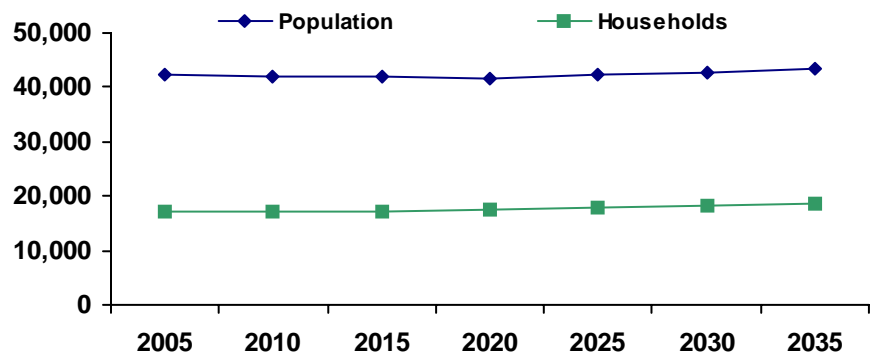
Educational Attainment of People Over 25 Years of Age



Population by Age



Population and Household Growth

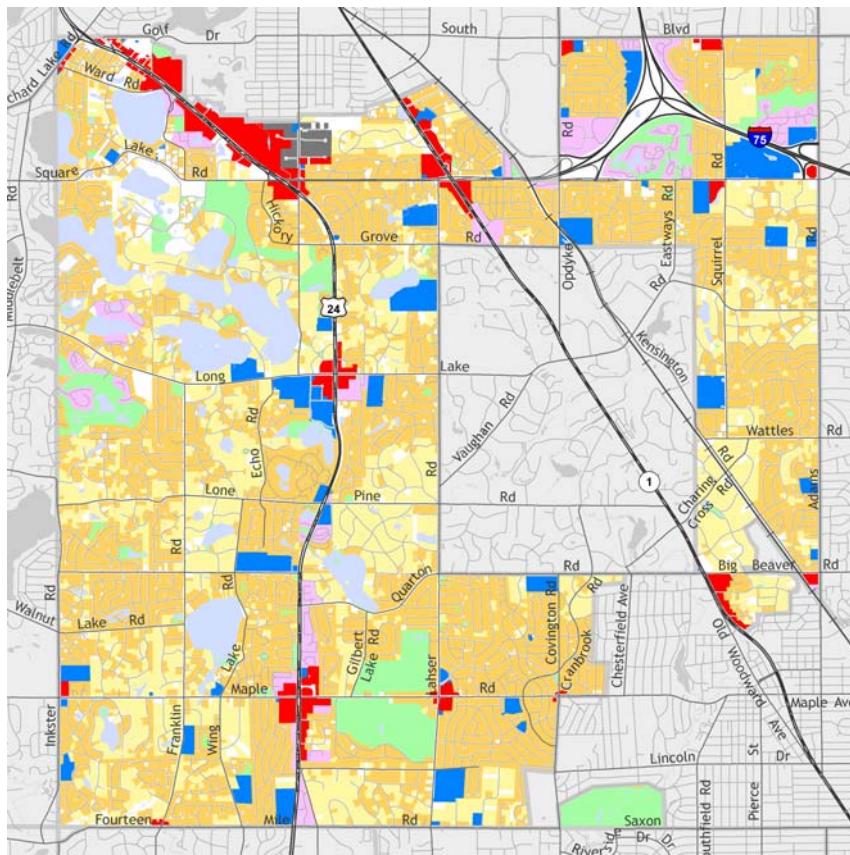


Source: U.S. Census Bureau

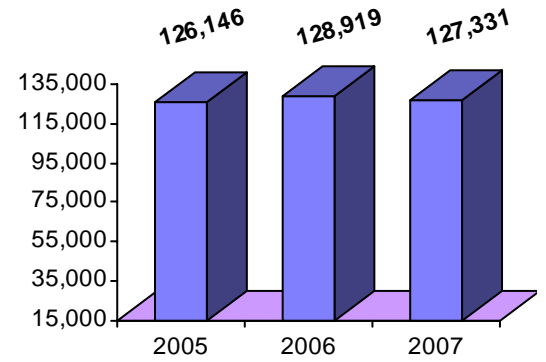
Source: SEMCOG

Bloomfield Twp

Median Household Income



The information provided has been compiled from recorded deeds, plats, tax maps, surveys, and other public records. It is not a legally recorded map or survey and is not intended to be used as one. For more detailed land use information, go to <http://www.oakgov.com/luz>



Source: Claritas

Housing Sales

2008 # of Sales	219
2008 Median Sales \$	\$260,000
2008 Avg DOM	168
2007 # of Sales	399
2007 Median Sale \$	\$297,450
2007 Avg DOM	170
2006 # of Sales	457
2006 Median Sale \$	\$259,500
2006 Avg DOM	136

Realcomp; 2008 Data for Jan-Jun only

Top Employers

Rank	Company Name	Industry
1	Bloomfield Hills School District	Primary education
2	Bloomfield Charter Township	City government
3	BBi Enterprises, L.P.	Motor vehicle parts and accessories
4	Sheena Management LLC	Food service consultants
5	Heartland Health Care Center	Skilled nursing care facilities
6	Costco	Warehouse club stores
7	US Post Office	U.S. postal service
8	Hubbell Roth & Clark Inc	Consulting engineer
9	TMP Associates Inc	Architectural engineering
10	Senior Comforcare Services Inc	Home health care services
11	Lowes	Lumber and other building materials

Manufactured Housing

Year	# of Parks	# of Units
2003	0	0
2005	0	0
2007	0	0

Source: SEMCOG

