

Novi

A community you can LIVE in!

Novi is truly an exciting home town: one with a growing national and international reputation for innovation and quality. Our neighborhoods are safe, welcoming places where friends and families are creating networks of caring, involved citizens. Recognition of our home town achievements has come from such diverse places as Better Homes and Gardens "Home of the Year" awarded to Autumn Park, the Chain Store Age "Retail Store of the Year-Best Supermarket" awarded to Vic's World Class Market, and our Novi Community School District being nationally recognized as a Gold Medal District by Expansion Management Magazine. The City of Novi experienced significant growth during the 1980s. Rural residential development has decreased due to a rapidly developing commercial center with attendant residential and industrial development. A completely new city center was constructed in what was once farmland taking advantage of anticipated growth and freeway access.

Local Government

Mayor		
David B. Landry	(248) 347-0456	
Manager		
Clay J. Pearson	(248) 347-0456	
Clerk		
Maryanne Cornelius	(248) 347-0456	
www.cityofnovi.org/		

Private Schools

Franklin Road Christian, Koby International Academy, Novi Christian School, Novi-Northville Montessori Center, Novi Woods Montessori Center, Catholic Central, Oakland Montessori

Public School Enrollment

Does not include public school academies

School District	Year	Enrollment
Novi	2007	6,352
South Lyon	2007	7,006
Walled Lake	2007	15,837

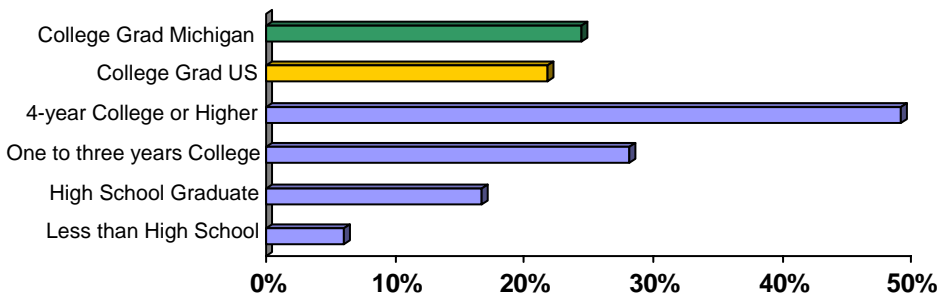
2007 Tax Rates

School District	Homestead	Non Homestead
Northville	\$30.69	\$48.69
Novi	\$36.16	\$51.27
South Lyon	\$34.64	\$52.64
Walled Lake	\$32.81	\$48.93

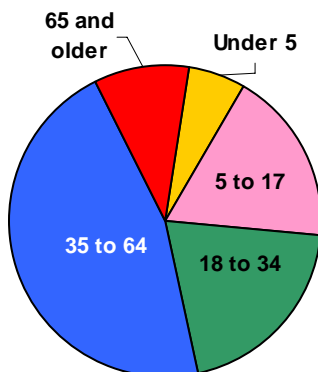
Colleges and Universities

Walsh College

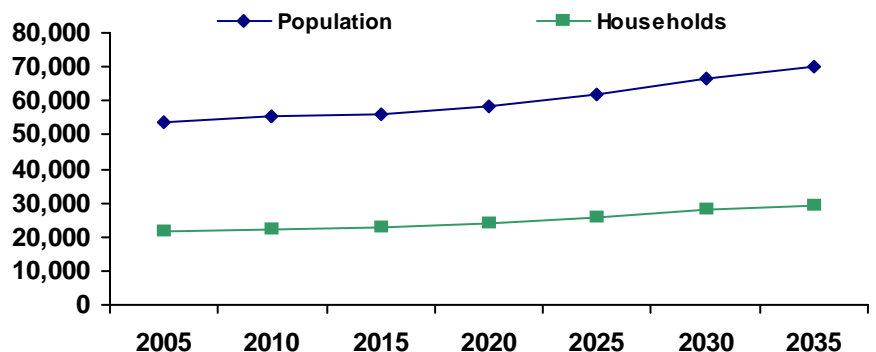
Educational Attainment of People Over 25 Years of Age



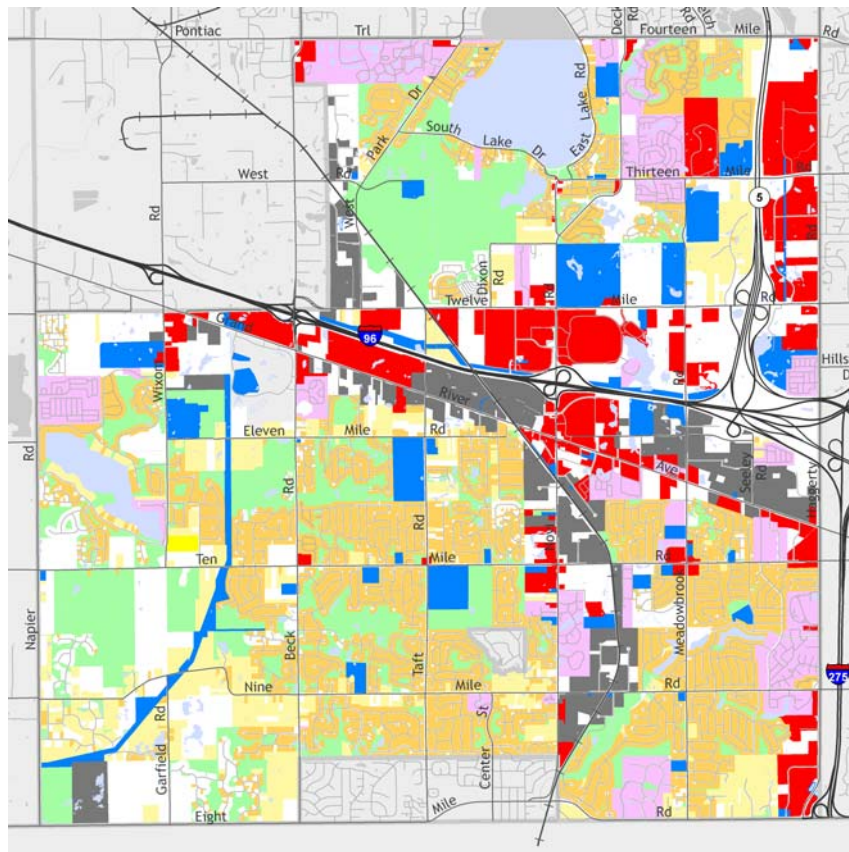
Population by Age



Population and Household Growth

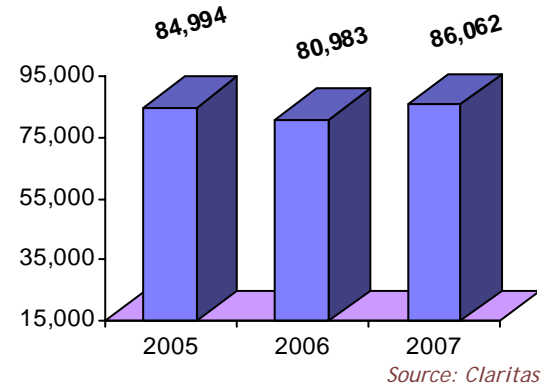


Novi



The information provided has been compiled from recorded deeds, plats, tax maps, surveys, and other public records. It is not a legally recorded map or survey and is not intended to be used as one. For more detailed land use information, go to <http://www.oakgov.com/luz>

Median Household Income



Housing Sales

2008 # of Sales	227
2008 Median Sales \$	\$232,500
2008 Avg DOM	162
2007 # of Sales	486
2007 Median Sale \$	\$275,000
2007 Avg DOM	151
2006 # of Sales	499
2006 Median Sale \$	\$243,000
2006 Avg DOM	117

2008 Data for Jan-Jun only

Top Employers

Rank	Company Name	Industry
1	Novi Community School District	Primary education
2	Magna International	Automotive interiors
3	Macy's	Department store
4	St. Johns/Providence Park Hospital	Healthcare
5	Tower Automotive	Automotive component designing
6	Ikon Office Solutions, Inc	Document management
7	Paychex	Payroll management
8	City of Novi	Municipal offices
9	Michigan CAT	Machinery/power systems
10	CVS Michigan, LLC	Distribution center
11	Cooper-Standard Automotive	Automotive
12	Voestalpine Polynorm	Automotive

Manufactured Housing

Year	# of Parks	# of Units
2003	5	1,942
2005	5	1,942
2007	5	1,942

Source: SEMCOG

