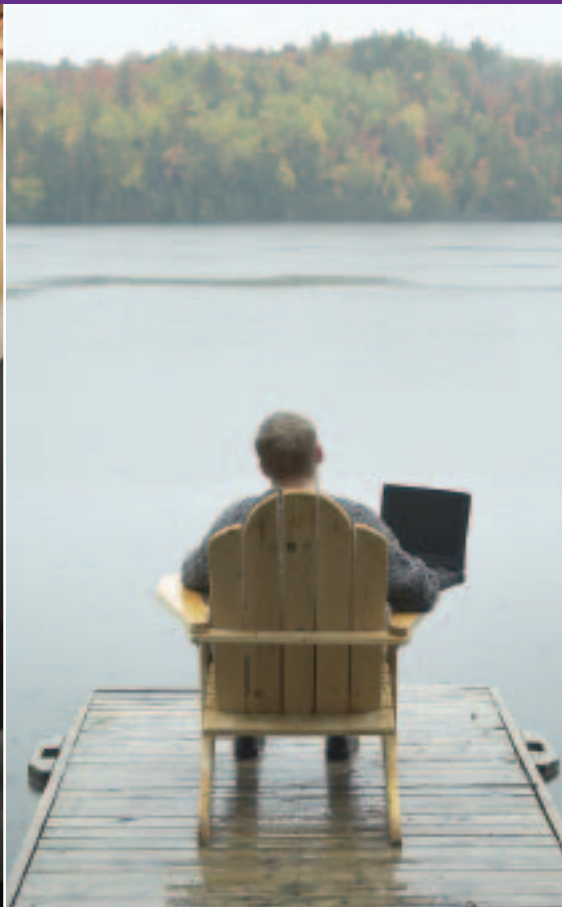




# Communications & Information Technology



**Connecting** Your Future

## Michigan Information

- ◆ More than a third of the state's R&D facilities are located in Oakland County
- ◆ Michigan ranks second in the nation in R&D spending
- ◆ Michigan companies file over 3,000 patents a year placing Michigan in the top 10 states for total number of patents granted
- ◆ Oakland County's leading engineering and manufacturing talent will help you bring your communications and IT products to market faster and cheaper
- ◆ Oakland County No. 3 in Broadband - According to Nielson/NetRatings report, the Detroit region beat the New York, Boston and San Francisco Bay areas with a 67% percent broadband penetration rate

## Organizations To Support You:

- ◆ Automation Alley- Southeast Michigan's Regional Technology Cluster
- ◆ GLIMA - Association of Technology-Oriented Professionals
- ◆ Internet2
- ◆ Merit Network
- ◆ Michigan's Technology Tri-Corridor
- ◆ TARDEC's National Automotive Center (NAC)
- ◆ Telecommunications Association of Michigan
- ◆ U.S. Army Tank-Automotive Research, Development and Engineering Center (TARDEC)
- ◆ U.S. Tank-Automotive and Armaments Command (TACOM)



By 2007, Oakland County, Michigan will be the first county in the United States to offer free wireless Internet connection throughout the entire county - that includes all of its 61 cities, townships and villages.

## Michigan Universities: Research Centers

### Central Michigan University

- ◆ The Software Engineering and Information Technology Institute

### Lawrence Technological University

- ◆ Electrical and Computer Engineering Lab

### Michigan State University

- ◆ National Superconducting Cyclotron Laboratory
- ◆ Media Interface and Network Design (M.I.N.D.) Laboratory
- ◆ Digital Media Art and Technology Laboratory (dMAT)
- ◆ Information Technology and Services Laboratory
- ◆ Quello Center for Telecommunications Management & Law
- ◆ Software Engineering and Network Systems Laboratory
- ◆ High Performance Computing Laboratory
- ◆ MATRIX
- ◆ ComTech Lab

### Michigan Technological University

- ◆ Center for Experimental Computation

### Oakland Community College

- ◆ Computer Information Systems Program

### Oakland University

- ◆ Center for Entrepreneurship in Information Technology (CEIT)
- ◆ Systems Engineering Lab

### University of Michigan

- ◆ Center for Advanced Computing
- ◆ Communications and Signal Processing Laboratory
- ◆ The Artificial Intelligence Laboratory
- ◆ Center for Information Technology Integration (CITI)
- ◆ Virtual Reality Laboratory

### Walsh College

- ◆ Information Assurance Center (National Center of Excellence)

### Wayne State University

- ◆ Institute for Scientific Computing
- ◆ SenSound - Visualization of (3D) sound sources and paths
- ◆ Manufacturing Information Systems Center
- ◆ Institute for Information Technology
- ◆ Networking Wireless Sensors Laboratory

### Western Michigan University

- ◆ CATIA (Computer Aided Three-Dimensional Interactive Application) Training Laboratory
- ◆ Tecnomatix Virtual Learning Software

**Green** - These universities are either located in or have campuses in Oakland County

## The innovators below came from Michigan universities:

- ♦ Tony Fadell - creator of the Apple iPod
- ♦ Charles Hutchins - creator of CAE - Computer-Aided Engineering
- ♦ Bill Joy - founder of Sun Microsystems
- ♦ Thomas and John Knoll - co-creators of Adobe Photoshop
- ♦ Larry Page - co-founder of Google, Inc.

## Workforce: Educated, Innovative & Motivated

- ♦ Over 40% of Oakland County residents have college degrees (national average is about 26%)
- ♦ Oakland County has the third highest number of high-tech workers in the nation and twice the corporate R&D professionals compared to the national average
- ♦ Population of Michigan workforce: 5.1 million
- ♦ 15 public universities, 50+ independent universities and colleges, 29 community colleges
- ♦ Over 96,000 college degrees are granted every year in Michigan - that's almost twice as many as the national average
  - ♦ 2 ½ times the number of master's degrees were granted in Michigan than the national average
  - ♦ Close to 1,500 Ph.D.s are granted in Michigan every year - almost twice the national average



Courtesy CSR

## Access to Capital

*Oakland County's Economic Development Team will help your company find potential sources of capital and financing.*

**Michigan Venture Capital Association** - Established by venture capital and private equity investors in the state, the Michigan Venture Capital Association (MVCA) is the state's premier public policy advocate for the private equity/venture capital industry. MVCA works to promote entrepreneurship and private equity investment.

**Venture Capital** - In four years alone, over \$694 million in venture capital has been invested in over 100 businesses in Michigan. For new emerging technology initiatives, the state has created the \$150 million Venture Michigan Fund to catalyze investment in early-stage firms operating here. With the matching requirement, this initiative will attract an additional \$450 million in capital to Michigan for investment in promising new companies.

**Angel Networks** - Aimed at helping companies with early stage seed financing, Michigan is fortunate to have three active Angel Networks: The Great Lakes Angels, The Grand Angels and The Ann Arbor Angels.

**Traditional and Non-Traditional Financing** - Oakland County's Business Finance Corporation and Economic Development Corporation help companies with the SBA 504 Loan and with Tax-Exempt Revenue Bond programs. Through the Automation Alley Technology Center, emerging companies can be assisted with securing non-traditional and unique sources of financing and capital.

**State Incentives / Tax Credits** - Michigan has a wide variety of incentive programs and tax credits for companies that qualify.

Photo Credits:  
Cover: Courtesy CSR  
Page image elements: Courtesy CSR



## Research Projects at Michigan Universities:

- ♦ A software architecture environment for real-time systems
- ♦ Study on a software component standardization
- ♦ Review and validation of MaRMI - III
- ♦ Human computer interaction and software engineering
- ♦ Wireless integrated microsystems
- ♦ Visualization of data
- ♦ Auto Fly Autopilot/ IT
- ♦ Multi-zone thermostat systems using IT
- ♦ Digitally-enabled enterprise value nets in contemporary firms
- ♦ Meridian: automating software development
- ♦ Rapidware component-based development of adaptable and dependable middleware
- ♦ Requirements modeling
- ♦ Specification and program synthesis
- ♦ Software reuse
- ♦ Embedded computing systems
- ♦ Reverse engineering and re-engineering
- ♦ An integrated toolset for specifying, testing and debugging complex software-intensive systems
- ♦ Multi-formalism models for analysis of evolving software
- ♦ Analyzing partially implemented real-time systems
- ♦ Model-based interactive system engineering
- ♦ Unified component-based framework for fault-tolerance
- ♦ Designing efficient protocols for wireless sensor networks
- ♦ Social psychological dimensions of electronic communication
- ♦ Smart sensors and integrated microsystems
- ♦ Object oriented analysis and design of software systems
- ♦ Data mining and machine learning
- ♦ Quality of service provisioning in wired and wireless networks
- ♦ Virtual simulation
- ♦ Bioinformatics
- ♦ Neural networks and genetic programming
- ♦ Computational linguistics
- ♦ Computer self-efficacy
- ♦ Decision support systems
- ♦ User-driven systems analysis and design

## Communications & Information Technology Companies

3D Solutions Inc.  
4-Serv Fourth Generation Services Inc.  
Absoft Corp.  
Advanced Data Research Inc.  
Advantage Computing Systems Inc.  
Advicon Computer Services Inc.  
Altair Engineering Inc.  
American Megacom Inc.  
American Systems Technology Inc.  
Ancor Information Management  
Ann Arbor Technologies Corp.  
Applied Dynamics International Inc.  
Ascent Technologies Inc.  
ASG Renaissance  
ASI DataMyte  
Brain North America Inc.  
BRT Inc.  
Cadcam-E Inc.  
Cadre Systems  
CareTech Solutions Inc.  
Cats Co.  
CCI Technologies  
Center for Computer Resources  
CGI Information Systems  
Cisco Systems  
Clarity Technologies  
CogniTens  
Compliance Systems Inc.  
Compsat Technology Inc.  
CompuSoft Integrated Solutions  
CompuSonics Video Corp.  
Computech Corp.  
Computer Associates  
Computer Consultants of America Inc.  
Compuware Corp.  
Comtech Computer & Data Systems Inc.  
Covansys Corp.  
Covisint Inc.  
Cyberlogic Technologies Inc.  
Cypress Corp.  
Danlaw Inc.  
DASI Solutions  
Data Communications Corp.  
Data Direction Inc.  
Data Tech Services Corp  
Datamatic Processing Inc.



## Communications & Information Technology Companies

Datanational Corp.  
Dearborn Group Technology  
Delmia Corp.  
Dewpoint Inc.  
Dice Corp.  
Dynalog Inc.  
EASi  
E-Com Inc.  
E-Con  
EGS Inc.  
Enco Systems Inc.  
Engineering Mechanics Research Corp.  
ERP Technologies Inc.  
ESI North America  
Eureka Technocrats Inc.  
Fisher/Unitech Inc.  
Fullscope Inc.  
Future Three Software Inc.  
Gedas USA  
Global ET  
Graph-Tech Inc.  
HTC Global Services Inc.  
IBM  
Ideal Technology Solutions U.S.  
Idetix Software Systems  
Image Process Design Inc.  
ImageSoft Inc.  
Information Gateways Inc.  
Information Solutions Group  
Information Systems Corp.  
Information Technology Intellectuals Corp.  
Innovative Technology Group Services  
Innovision Technologies Inc.  
Insolixen Corp.  
Integrated Data Solutions Inc.  
Internet Security Alliance  
Intrepid World Communications  
KBTS Technologies Inc.  
Lakeside Software Inc.  
Logica CMG  
Logicalis Inc.

MC Technology Solutions  
MDC Systems Inc.  
Medstat Group Inc.  
Merit Network Inc.  
MicroPro Corp.  
Millenium Software Inc.  
Miracle Software Systems Inc.  
Modern Computer Corp.  
Ncode International Inc.  
Netech Corp.  
Netlink Software Group America  
Netxert Inc.  
New Car Test Drive Inc.  
New World Systems Corp.  
Nextep Systems  
NTT Communications  
NuSoft Solutions Inc.  
Ociter Enterprises  
OEM Microsolutions Inc.  
Open Mind Software Technologies Inc.  
Opticore  
Optimal Solutions Inc.  
Optrex America Inc.  
Paramount Technologies Inc.  
Plexus Systems  
Proforma Corp.  
Prospects Corp.  
Q E D Inc.  
Q-Das Inc.  
QS Solutions  
Quantum Compliance Systems Inc.  
QUEST Software Inc.  
R.L. Polk  
Radley Corp.  
Ranal Inc.  
Rave Computer Association Inc.  
Realcomp  
Realtime Technologies  
Red Sky Technologies Inc.  
Redevex Software Inc.  
REH Associates Inc.  
Renkim Corp.

RLP Technologies Inc.  
RouteOne  
RSB Systems Inc.  
SAI Systems Inc.  
SAP America Inc.  
Scate Technologies  
SER Solutions Inc.  
Softlab Inc.  
SoftTech Solutions  
Solution Technology  
SRI International  
SunTel Services  
Synergy Computer Solutions  
Syntel Inc.  
System Solutions International  
Systems Technology Group Inc.  
TechMath of North America Inc.  
Technical Solutions Inc.  
Technology Integration Group Services Inc.  
Technosoft Corp.  
TechTeam Global Inc.  
Tecnomatix Technologies Inc.  
Tecoplan Informatik Inc.  
Teoma Systems  
The TM Group Inc.  
Touch World Inc.  
Universal Solutions Inc.  
UpStream Software Corp.  
V2soft Inc.  
VED Software Services  
Vertare  
Via Information Tools  
Vision Information Technologies  
Visionary Business Systems  
VOIP Carriers Inc.  
Wise Solutions Inc.  
Yojna Inc.  
Zip Form

Green - Oakland County companies

Blue - Southeast Michigan companies

Black - Michigan companies

Contact us with any additions or changes to this list.

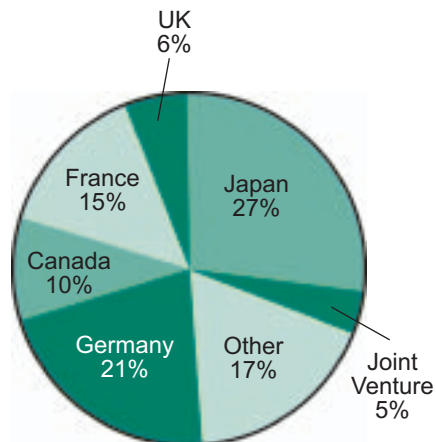
## Oakland County Can Help Your Business

The Economic Development Team offers assistance in:

- ◆ Site location
- ◆ Financing
- ◆ Tax incentive
- ◆ Liaison with state and local agencies
- ◆ Workforce development
- ◆ Business Assistance Center (business consulting)
- ◆ Information products - to ensure you make the right decision for your company's location

## Oakland County is an International Hub

Foreign firms make the strategic decision to locate in Oakland County because of the highly skilled workforce, strong educational systems and the international support services available to them.



- ◆ 653 foreign-owned firms from 24 countries are in Oakland County
- ◆ 259 of these firms came to Oakland County in the last 12 years-that's an average of two foreign companies a month opening up a location in Oakland County



**L. Brooks Patterson,**  
*Oakland County Executive*

*With the support of  
The Oakland County Board  
of Commissioners*

## Oakland County is Strategically Located



- ◆ Centrally located between Chicago, Toronto and Cleveland, Oakland County is strategically positioned to capture the entire Midwest market
- ◆ The Michigan-Ontario border is the busiest U.S.-Canada crossing in the country, making this area an ideal location to reach the United States and the Canadian markets. Ontario, less than an hour's drive from Oakland County, generates some 40% of Canada's total gross domestic product



**Contact us today for more information:**

**Oakland County Department of Economic Development & Community Affairs  
Planning & Economic Development Services**

2100 Pontiac Lake Road, Building 41 West  
Waterford, MI 48328  
Phone: (248) 858-8706 | Fax: (248) 975-9555

Website: [www.emergingsectors.org](http://www.emergingsectors.org)

*Oakland County's Communications & Information Technology*  
Contact: **Mark Adams**  
Email: [adamsm@oakgov.com](mailto:adamsm@oakgov.com)