

HOLLY OAKS ORV PARK - YEAR THREE

-NORTH 60

ONE WAY TRAIL

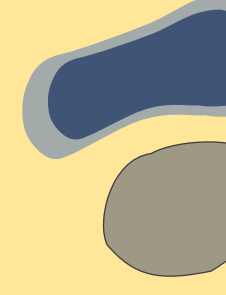
ONE WAY CHALLENGE ELEMENT

BI-DIRECTIONAL TRAIL

BI-DIRECTIONAL CHALLENGE ELEMENT

BI-DIRECTIONAL PARK ROAD

TRAIL INTERSECTION POINT



WATER BODY - LOOK FOR SIGNAGE - SOME ACCESS IS PROHIBITED

CONCRETE FEATURE

0 100 200



Key Rules before your visit:

1. Vehicles **should not be louder than 94 dBA** when measured 20 inches from the exhaust pipe at approximately half the vehicle's rated RPMs. All vehicles are required to have a muffler and spark arrester containing baffles meeting the established United States Forest Service specifications.
2. Tickets **will NOT be refunded** if vehicles do not pass a sound check at the park.
3. Operators **under the age of 16** are allowed to ride dirt bikes and quads in the park but **MUST SHOW their DNR ORV Safety Training Certificate**. Please bring the certificate to the park so staff can verify.
4. Quads should only have one rider/driver unless there is a manufacturer dedicated back seat.
5. Please **follow posted speed limits and directional signage**. Oakland County Sheriff's Deputies may pull over and ticket those speeding on park roads.



MT. HOLLY SKI AND SNOWBOARD RESORT



HOLLY OAKS ORV PARK - YEAR THREE MAIN - LOWER MAIN

- ONE WAY TRAIL
- BI-DIRECTIONAL TRAIL
- BI-DIRECTIONAL PARK ROAD
- ONE WAY CHALLENGE ELEMENT
- BI-DIRECTIONAL CHALLENGE ELEMENT
- TRAIL INTERSECTION POINT
- CONCRETE FEATURE
- WATER BODY - LOOK FOR SIGNAGE - SOME ACCESS IS PROHIBITED

