



Jim Nash

Combined Sewage
Overflow
CSO
Public Notification Plan

NPDES Permits No.

MI0026115

MI0037427

MI0025534

MI0048046

August 3rd, 2018

I. Public Notification of CSO into the Great Lakes Basin

The Oakland County Water Resources Commissioner (WRC) has developed a public notification plan (PNP) for combined sewer overflows (CSOs) into the Red Run Drain and Rouge River in accordance with the issued National Pollutant Discharge Elimination System (NPDES) Permits and 40 CFR Part 122.38(c). This PNP describes how WRC will ensure that the public receives adequate notification of CSO occurrences and impacts from its combined sewer system in compliance with the United States Environmental Protection Agency (USEPA) rule to implement Section 425 of the Consolidated Appropriations Act of 2016. This PNP will be posted on the WRC website and will soon be found at <https://www.oakgov.com/water/>

The WRC operates and maintains four Retention Treatment Basins (RTBs). The water stored and released from these RTBs has received treatment including: settling, screening, disinfection and removal of floatables. Testing has been performed to evaluate the effectiveness of the treatment and to confirm bacteria levels are below permitted limits and are protective of public health.

The WRC operates and maintains the following CSO Facilities within Oakland County:

- | | | |
|------------------------------|---------------------|----------------------------|
| • George W. Kuhn CSO RTB | Madison Heights, MI | NPDES Permit No. MI0026115 |
| • Acacia Park CSO RTB | Beverly Hills, MI | NPDES Permit No. MI0037437 |
| • Birmingham CSO RTB | Birmingham, MI | NPDES Permit No. MI0025534 |
| • Bloomfield Village CSO RTB | Birmingham, MI | NPDES Permit No. MI0048046 |

II. Potentially Affected Public Entities

The local health departments and potentially affected public entities whose waters may be impacted by a CSO discharge from WRC are identified below along with their contact information.

- | | |
|------------------------------------------------|-------------------------------------------------------------------------------------------|
| ➤ Michigan Department of Environmental Quality | Fax: (586) 753-3751 |
| ➤ Macomb County Health Department | Fax: (586) 469-6534 |
| | Email: stacey.mcfarlane@macombgov.org |
| ➤ Oakland County Health Department | Fax: (248) 452-9758 |
| | Email: hanselm@oakgov.com |
| ➤ City of Birmingham | pomeara@bhamgov.org |
| ➤ Bloomfield Township | OOlsztyn-Budry@bloomfieldtwp.org |
| ➤ Village of Beverly Hills | cwilson@villagebeverlyhills.com |

Notification:

The WRC currently notifies the above public municipalities and public entities regarding CSO discharges. In accordance with the new EPA rule, this plan will now give notice within four hours of the onset of a CSO. The discharge final notification contains event start and stop times, the laboratory results regarding fecal and E.coli geometric means and the amount of CSO discharged in million gallons. "To ensure timely and consistent communication to the public regarding CSO discharges to the Great Lakes Basin", we have made plans to add initial discharge notifications through social media within four hours as well, until it is established whether MiWaters can satisfy this requirement.

****Note:** Estimated volume calculations of CSO discharges use a weir formula and a series of four bubblers to determine the amount of spill over the weir at the GWK RTB. Those bubblers are used in a weir overflow formula to calculate the amount of CSO into the Red Run Drain. The Rouge River Basins use an influent meter and a dewatering meter to calculate the amount of CSO being discharged (the amount being dewatered subtracted from the amount entering the basin equals the amount being discharged to the river). The CSO begins when flow is measured (by bubbler) over our effluent weir at Outfall 001 (Red Run Drain) and ceases when that bubbler is reading zero inches of spill. The Rouge River Basins have a probe (an electrical sensor) that becomes submerged when spills to the river occur. The discharge ends when these probes are no longer submerged.

III. Signage

The PNP has identified the following CSO outfalls where signage will be placed to meet the requirements of 40 CFR Part 122.38(a)(1). Maps of the RTBs and their outfalls are included in Exhibit A. As these CSO RTBs operate under NPDES permits and their discharges are considered protective of public health and meet current water quality standards, signs will be placed at the CSO discharge point(s). Examples of the signage can be found in Exhibit B. Signs will be inspected at least every three months to confirm they are accurate, visible, upright, in place and if not, they will be repaired or replaced as necessary.

IV. Comments and Suggestions

This Public Notification Plan has been submitted to the Oakland County and Macomb County Health Departments and we are currently awaiting their response regarding comments and recommendations they may have. After reviewing and updating as necessary, we will re-submit the PNP once and if we receive feedback.

Comment(s):

V. Initial and Supplemental Notification Protocol

On or before November 7th, the WRC will implement the initial and supplemental protocols (as defined below) and place the necessary signage at the necessary outfall structures (see Exhibits A and B).

1. Within 4 hours of becoming aware of CSO discharge, the WRC will notify potentially impacted public entities listed in Section II of the PNP. The notification will be sent by electronic mail and/or facsimile and will include the following information:
 - a) RTB Address and Contact Information
 - b) Water body that receives the discharge(s)
 - c) Potentially impacted public access areas
 - d) Date(s) and time(s) that the discharge(s) commenced
 - e) Notice that follow-up information will be sent regarding the amount and quality of the discharge after the cessation of the CSO
2. Within 4 hours of becoming aware of a CSO discharge, the WRC will provide public notification through the Michigan Department of Environmental Quality's MiWaters System. The notification will at minimum include all the information specified in paragraph (1)(a-e) of this section.
3. Within 7 days after becoming aware that the CSO discharge(s) has ended, the WRC will update potentially impacted public entities listed in Section II of the PNP by electronic mail and/or facsimile with the following information:
 - a) The estimated volume of the discharge(s).
 - b) The approximate time that the discharge(s) ended
 - c) The quality of the discharge, whether or not the CSO was in compliance with permit requirements
 - d) Any permit violations that may have occurred

4. Within 7 days after becoming aware that the CSO discharge(s) has ended, the WRC will provide a public update through the Michigan Department of Environmental Quality's MiWaters System. The notification will at minimum include all the information specified in paragraph (3)(a-d) of this section.

VI. Annual Notification

On or before May 1 of 2019, a link will be posted on the WRC website (<https://www.oakgov.com/water/>) to the MiWaters website (<https://miwaters.deq.state.mi.us/miwaters>) which will provide an access link to the CSO discharge information for 2018.

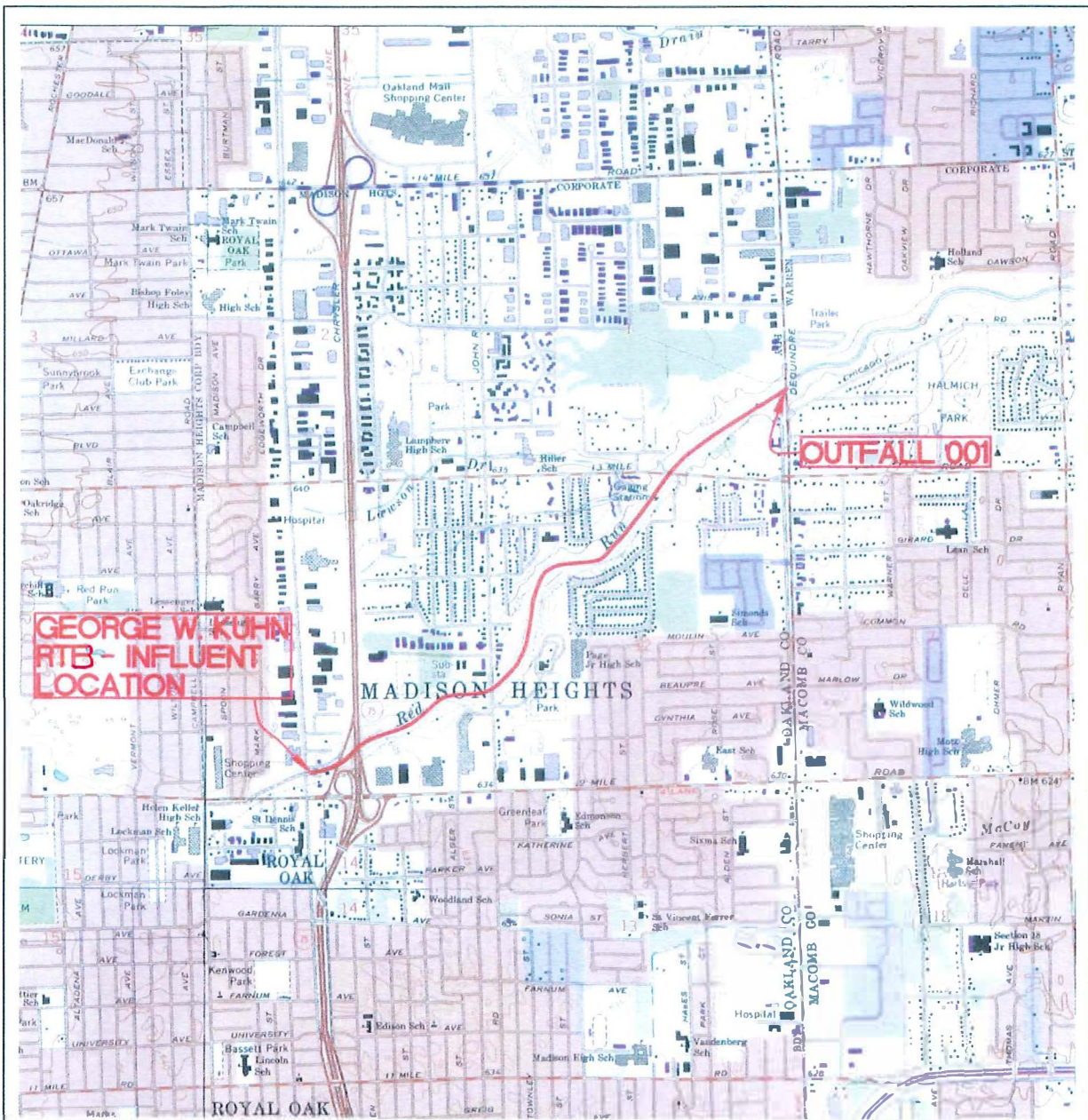
The DEQ's Annual Combined Sewer Overflow /Sanitary Sewer Overflow report will satisfy the EPA's requirement for the annual public notice. The WRC will furthermore provide the EPA with notice of how the notification is made available. Notice to the EPA will be in the form of an email to NPDES_CS0@epa.gov containing a link to the annual notice and the contact information of the person responsible for maintaining the website. This information will include the name, title, phone number and email address of the contact person, and additional information regarding how the annual notice may be made available if necessary.

Oakland County Water Resources

Public Notification Plan

Exhibit A

RTB Outfall(s) Map



**GEORGE W. KUHN
RTF - INFLUENT
LOCATION**

OUTFALL 001

MADISON HEIGHTS

ROYAL OAK

DATA SOURCE: USGS 7.5 MINUTE TOPOGRAPHIC MAP, BIRMINGHAM, HIGHLAND PARK, ROYAL OAK(1996) AND WARREN QUADRANGLES, 1968



REVISION BLOCK			
Parcel Base / Source Date: AS NOTED			
Rev. No.:	Rev. By:	Rev. Date:	Description:
1			
2			
3			
4			



**GEORGE W. KUHN RTF (FORMERLY OAKLAND COUNTY SOCSDS 12 TOWNS RTF)
MAP OF FACILITY AND DISCHARGE LOCATION**

ONE PUBLIC WORKS DRIVE, BLDG 95 WEST WATERFORD, MICHIGAN 48328-1907	ORIG. DATE: 01/04/03 SCALE: 1:24000	SHEET: FIGURE 2
---------------------------------------------------------------------------	----------------------------------------	-----------------

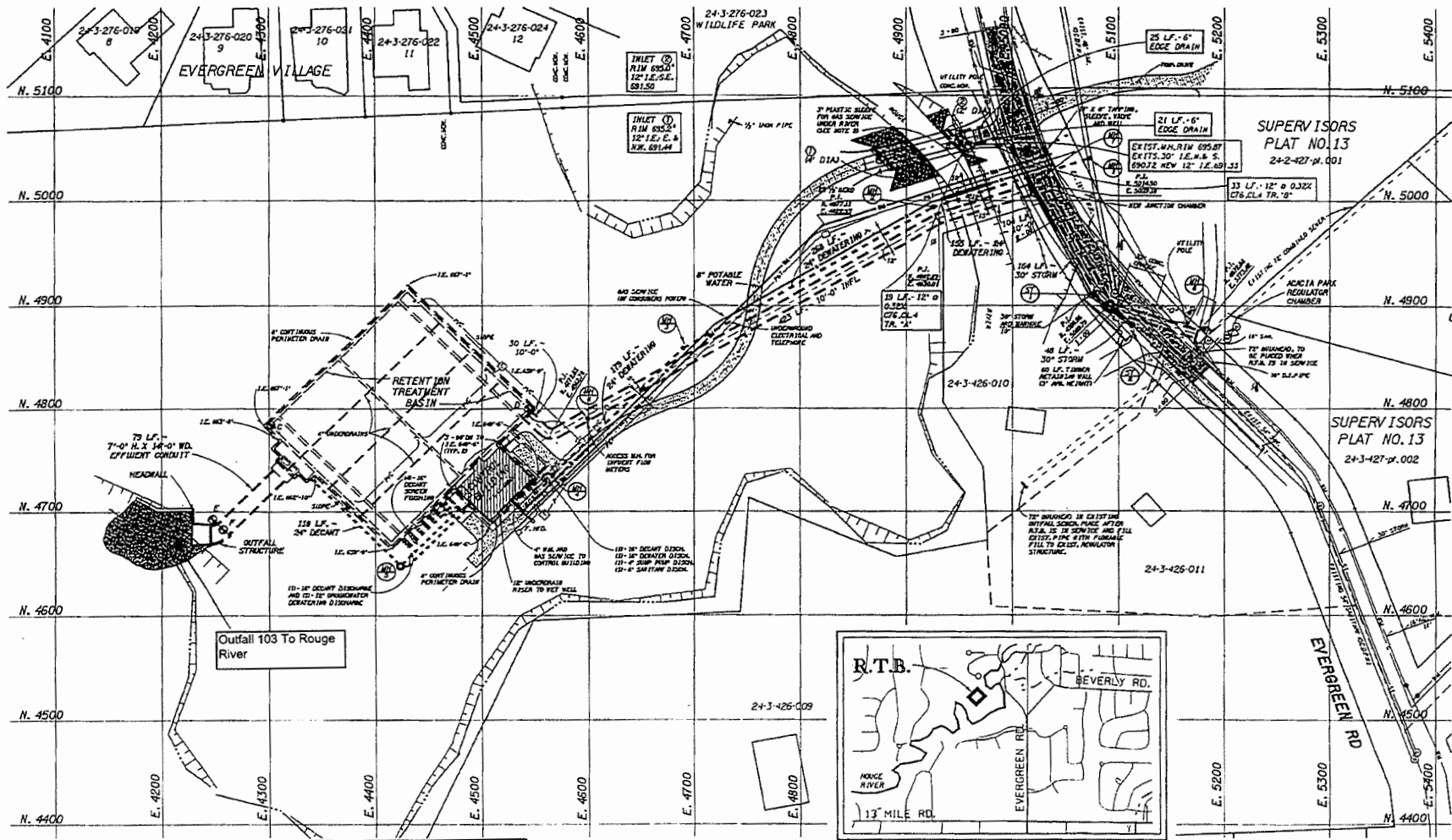
ACCOUNT NO. 1140

STROKE FILE - 08FEB1996 0951

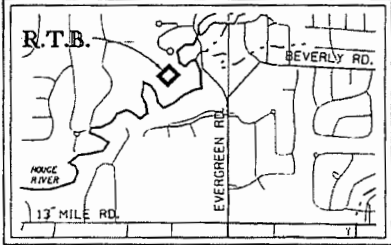
PLOT NAME - N1A

DESIGN FILE - 005526040001.dwg

USER NAME - Rmccoy



Oakland Co-Acacia Park CSO RTB
 NPDES Permit No. MI0037427
 Wastewater Discharge Permit Application
 Section 1, No. 11 - MAP OF FACILITY AND DISCHARGE LOCATION



LOCATION PLAN



HRC

SITE PLAN, SEWERS AND UTILITIES

ACACIA PARK R.T.B.
FIGURE 2.1

Birmingham CSO RTB
NPDES Permit No. MI0025534
Wastewater Discharge Permit Application
Section 1, No. 11 - MAP OF FACILITY AND DISCHARGE LOCATION



HRC

SITE PLAN, SEWER AND UTILITIES



BIRMINGHAM R.T.B.
FIGURE 2.1

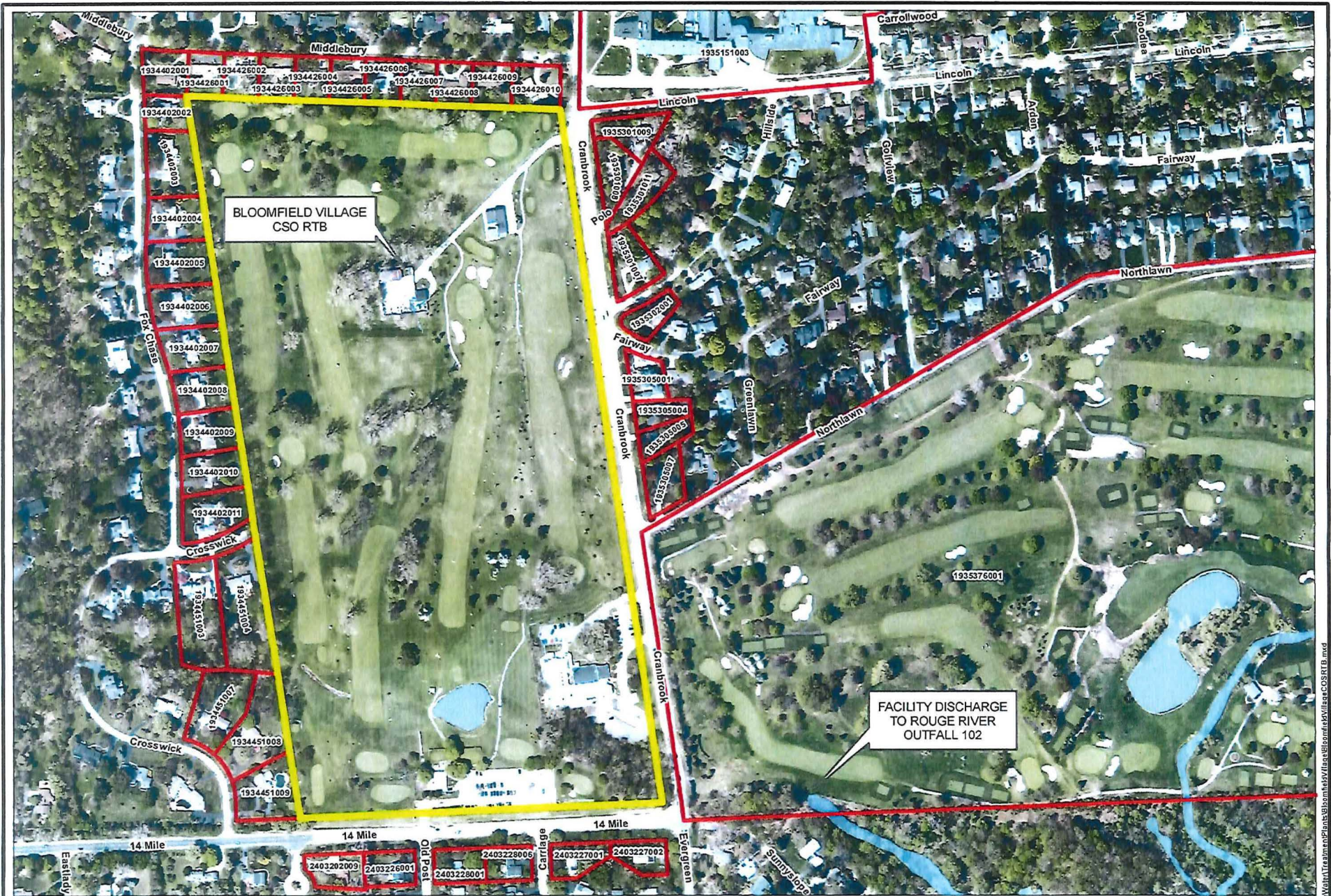
ACCOUNT NO. (14)

STROKE TIME - 09:49:19.0033

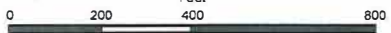
PLT MADE - KVA

DESIGN FILE - A:\B2\18100\181003\181003.dwg

DATE PLOT - 2004-04-23



2008 ORTHO PHOTO
Revised March 7, 2011



BLOOMFIELD VILLAGE CSO RTB SITE MAP



Disclaimer: The information provided in this system has been acquired from recorded maps, photos, and other public records and data. It is not a warranty, representation, or endorsement of the accuracy of the data. Users of this data are advised that the information provided above should be verified for accuracy at the information source.

J:\Data\Map\GIS\MapData\BloomfieldVillageCSO\RTB.mxd

**Oakland County Water Resources
Public Notification Plan**

Exhibit B

RTB Signage



NATIONAL POLLUTANT DISCHARGE ELIMINATION SYSTEM

OAKLAND COUNTY

George W. Kuhn Drainage District

Permitted Combined Sewage Overflow (CSO)

NPDES Permit No. MI0026115

Outfall 001 and Monitoring Point 001A

ATTENTION: THIS IS A CSO DISCHARGE POINT

THIS OUTFALL MAY

DISCHARGE **TREATED WASTEWATER**

DURING WET WEATHER CONDITIONS AS PERMITTED BY THE

MICHIGAN DEPARTMENT OF ENVIRONMENTAL QUALITY

For more information please visit:

www.oakgov.com/water

Oakland County Water

Resources Commissioner

Building 95 West

One Public Works Drive

Waterford, MI 48328-1907

For Emergencies call 248-858-0931



Jim Nash

NATIONAL POLLUTANT DISCHARGE ELIMINATION SYSTEM

OAKLAND COUNTY

Permitted Combined Sewage Overflow (CSO)

Acacia Park CSO Drainage District

NPDES Permit No. MI0037427

Outfall 103 and Monitoring Point 103A

ATTENTION: THIS IS A CSO DISCHARGE POINT

THIS OUTFALL MAY

DISCHARGE **TREATED WASTEWATER**

DURING WET WEATHER CONDITIONS AS PERMITTED BY THE

MICHIGAN DEPARTMENT OF ENVIRONMENTAL QUALITY

For more information please visit:

www.oakgov.com/water

Oakland County Water

Resources Commissioner

Building 95 West

One Public Works Drive

Waterford, MI 48328-1907

For Emergencies call 248-858-0931



Jim Nash

NATIONAL POLLUTANT DISCHARGE ELIMINATION SYSTEM

OAKLAND COUNTY

Permitted Combined Sewage Overflow (CSO)

Birmingham CSO Drainage District

NPDES Permit No. MI0025534

Outfall 101 and Monitoring Point 101A

ATTENTION: THIS IS A CSO DISCHARGE POINT

THIS OUTFALL MAY

DISCHARGE **TREATED WASTEWATER**

DURING WET WEATHER CONDITIONS AS PERMITTED BY THE

MICHIGAN DEPARTMENT OF ENVIRONMENTAL QUALITY

For more information please visit:

www.oakgov.com/water

Oakland County Water

Resources Commissioner

Building 95 West

One Public Works Drive

Waterford, MI 48328-1907

For Emergencies call 248-858-0931



Jim Nash

NATIONAL POLLUTANT DISCHARGE ELIMINATION SYSTEM

OAKLAND COUNTY

Permitted Combined Sewage Overflow (CSO)

Bloomfield Village CSO Drainage District

NPDES Permit No. MI0048046

Outfall 102 and Monitoring Point 102A

ATTENTION: THIS IS A CSO DISCHARGE POINT

THIS OUTFALL MAY

DISCHARGE **TREATED WASTEWATER**

DURING WET WEATHER CONDITIONS AS PERMITTED BY THE
MICHIGAN DEPARTMENT OF ENVIRONMENTAL QUALITY

For more information please visit:

www.oakgov.com/water

Oakland County Water

Resources Commissioner

Building 95 West

One Public Works Drive

Waterford, MI 48328-1907

For Emergencies call 248-858-0931