

WWAM Warm Wear



In March of 2012, Community Corrections expanded the WWAM program by establishing WWAM Warm Wear. This allows offenders with medical or physical limitations restricted from physical labor, the opportunity to participate.



Eligible participants loom (a form of knitting) winter hats, which are then donated to local nonprofit organizations

WWAM

Weekend & Weekday Alternative for Misdemeanants

Description

The WWAM (*Weekend and Weekday Alternative for Misdemeanants*) program is a supervised Community Service Program. WWAM runs crews on Thursdays, Fridays, Saturdays, and Sundays. A WWAM staff member supervises each crew (10-14 participants). By court order each offender is sentenced to WWAM from 8:00am to 4:00pm and are required to pay \$15 a day by means of a money order or paying on line. WWAM provides transportation to the agency site. Offenders are responsible for bringing their own lunch and dressing appropriately according to weather conditions, as crews do work in inclement weather.

Objectives

- To incorporate the punitive aspects of jail while "giving back" to the community
- To provide District Court Judges a wider array of sentencing alternatives for misdemeanor offenders in lieu of jail time
- To provide an alternative to jail that will help in reducing jail overcrowding by providing a safe alternative to incarceration
- To provide a safe and structured environment
- Provide community service work to nonprofit agencies
- To teach by example and improve upon work ethics and responsibilities

WWAM Participants Giving Back

Gatehouse at Highland Recreation



Before



After



Before

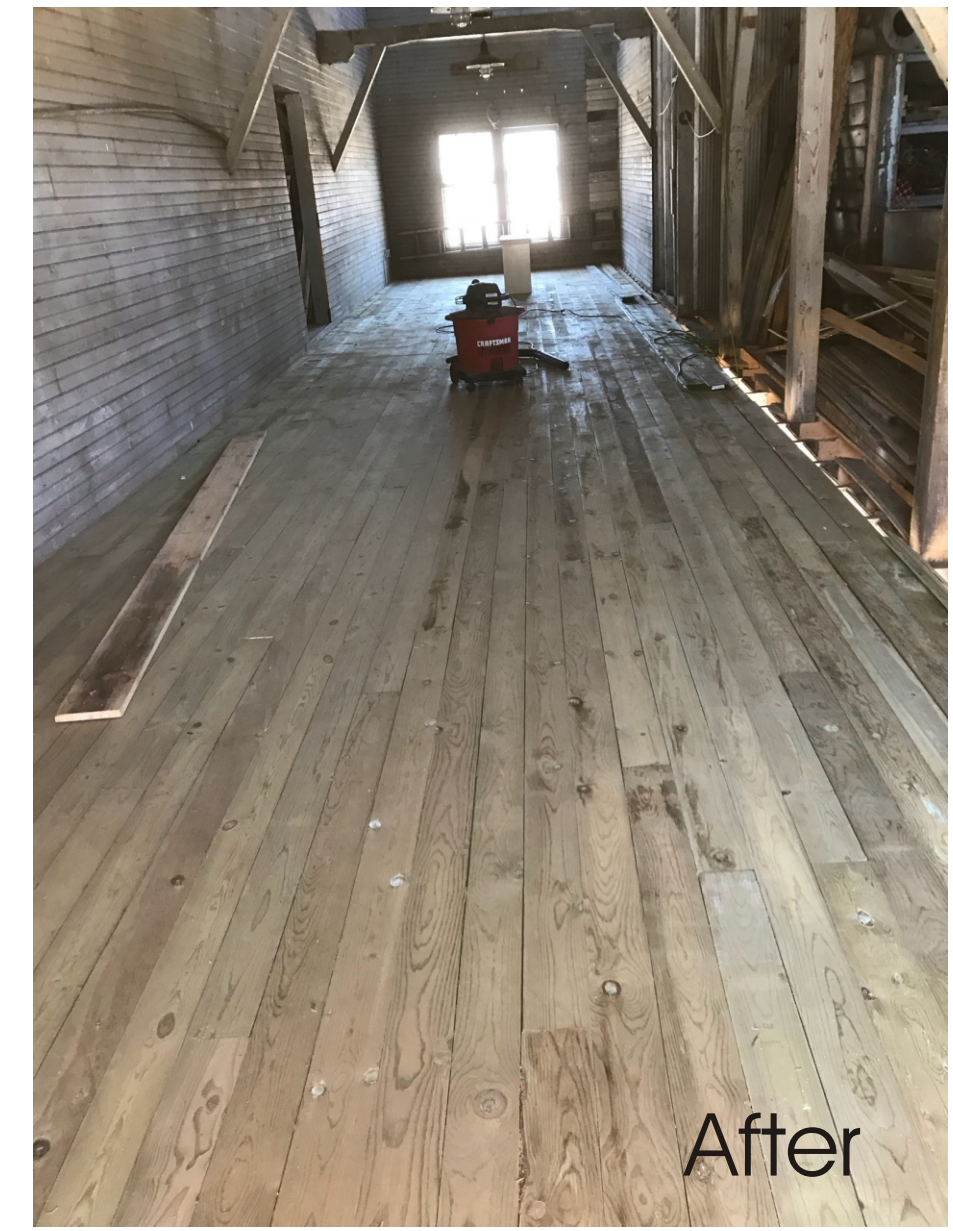


After

Edsel Ford Barn at Highland Recreation

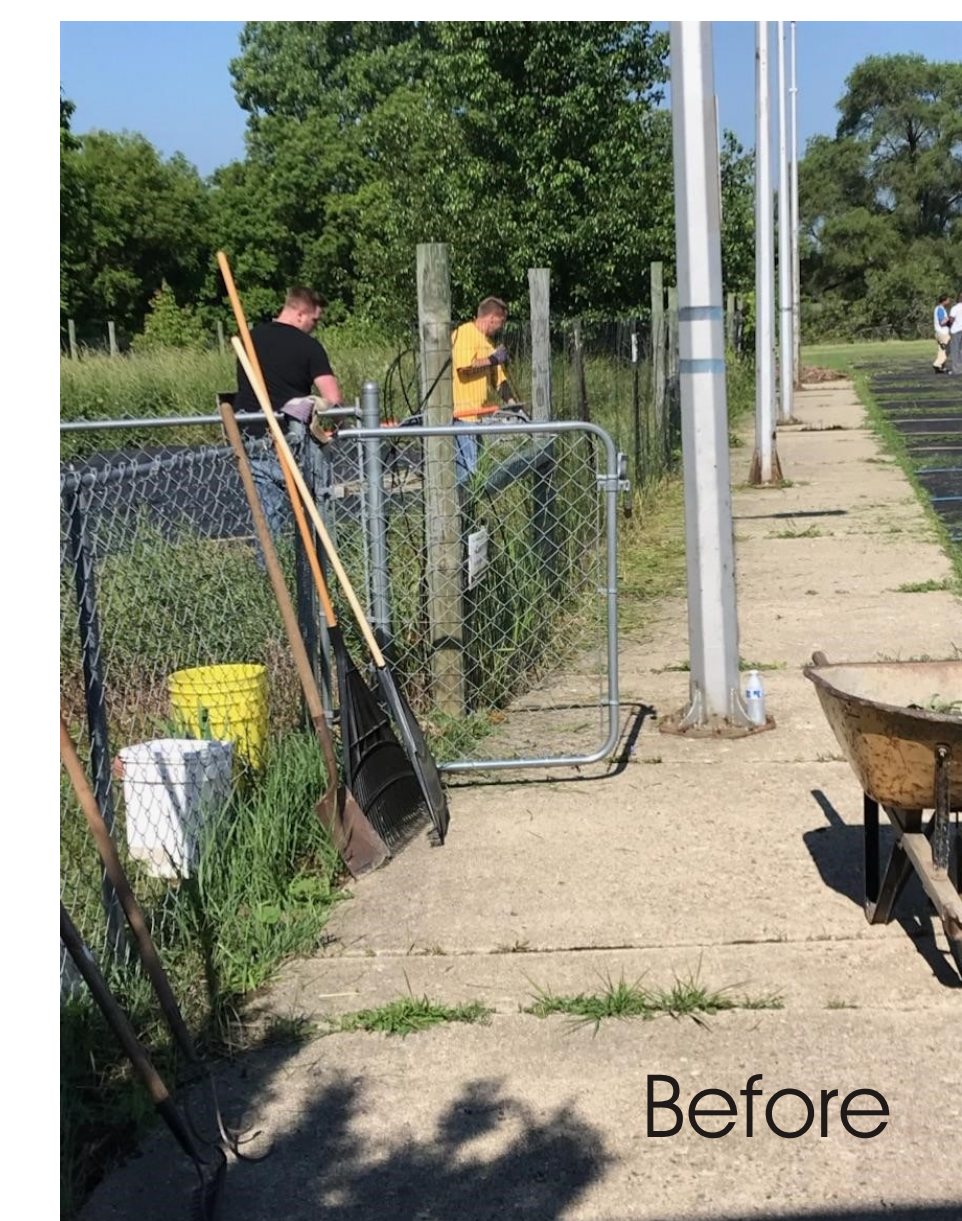


Before



After

Grace & Peace Church Pontiac

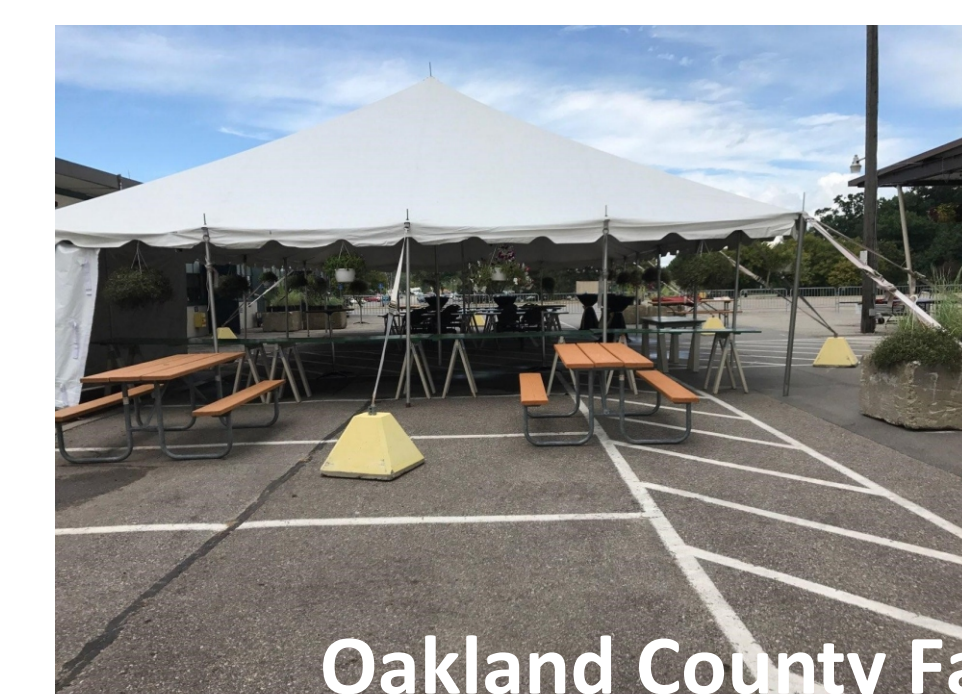


Before

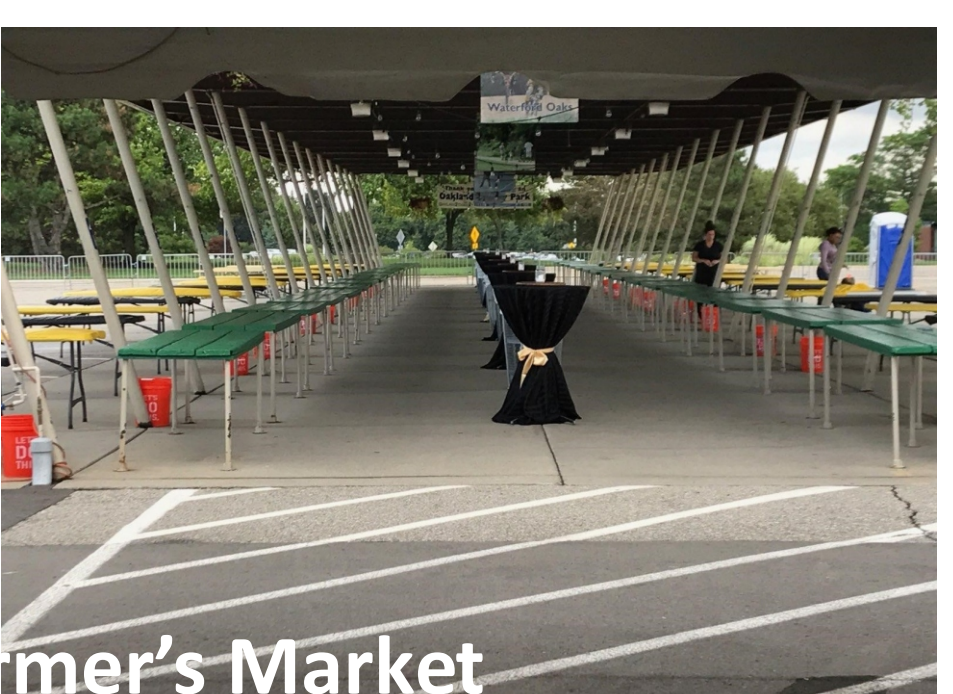


After

Event Set-Up: Oakland Uncorked



Oakland County Farmer's Market



Referral Process

1. The referring agent will:

Contact the WWAM Administration office at 248.451.2330 during regular business hours to schedule the defendants WWAM days.

2. Complete the WWAM Referral form and

email to commcorr@oakgov.com or fax the completed referral form to 248.451.2319.



All misdemeanor offenders facing a jail sentence are eligible to participate in WWAM.

The WWAM program coordinates with many Oakland County governmental units, local municipalities, schools, churches, and nonprofit agencies.

Tasks include *but are not limited to...*

- Interior and exterior painting
- Cleaning
- Clearing trails and pathways
- Snow shoveling/removal
- Outdoor work/landscaping
- Trash pick up
- Janitorial work
- Set-up and breakdown for special events
- Minor carpentry
- Organization of supply rooms



Oakland County Community Corrections Division ★ WWAM Program C**Star ID: Participant Information / Referral Form

Last		First		Middle		Address, City, Zip	
DOB	SSN	Charge	MCL Code	Y/N	Charge	MCL Code	Y/N
Phone	DOB	Charge	MCL Code	Y/N	Charge	MCL Code	Y/N
Referral Date	Termination Date (Date to Start WWAM)	Projected Completion Date	WWAM Days	Check the days the client is to attend WWAM			
SATURDAY	SUNDAY	THURSDAY	FRIDAY	For Office Use Only			
		<input type="checkbox"/> Warm Wear	<input type="checkbox"/> Warm Wear	Reinstatement Date	WWAM Days	Final Days	
The defendant must call WWAM within 24 hours to schedule their WWAM days. Call 248.451.2330 - Monday through Friday between 8:00AM and 4:00PM							
Comments:							

After completing this form please fax to 248.451.2319 or e-mail form to commcorr@oakgov.com with email subject "WWAM Referral"