

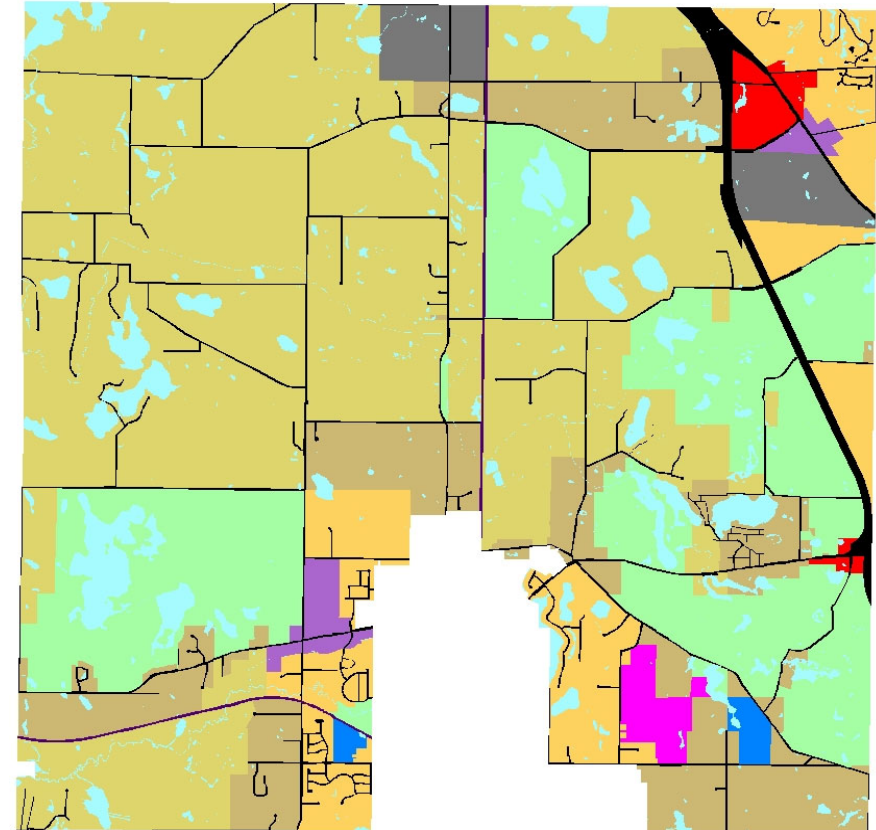
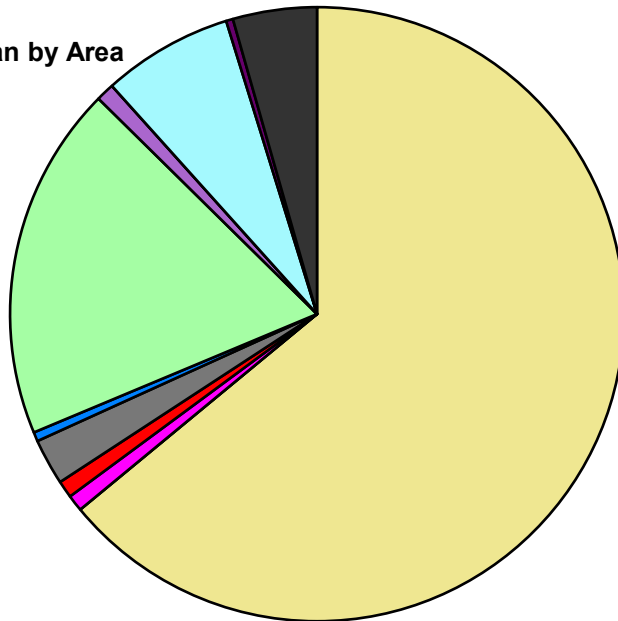
## Township of Holly Composite Master Plan Statistics

Land Use	Area (ac.)	Area (%)
Single Family Residential	13,671.5	64.0%
Multiple Family		
Mobile Home Park	186.2	0.9%
Commercial/Office	191.1	0.9%
Industrial	521.0	2.4%
Public/Institutional	102.5	0.5%
Recreation/Conservation	3,990.0	18.7%
Mixed Use	207.4	1.0%
Reclamation Plan		
Water	1,465.8	6.9%
Railroad Right-of-Way	77.2	0.4%
Road Right-of-Way	943.9	4.4%
<b>Total</b>	<b>21,356.7</b>	<b>100.0%</b>

Single Family by Lot Size	Area (ac.)	Area (%)
10 acres or greater		
5 to 9.9 acres		
2.5 to 4.9 acres	9,201.0	67.3%
1 to 2.4 acres	2,686.8	19.7%
14,000 to 43,559 sq. ft.	1,783.6	13.0%
8,000 to 13,999 sq. ft.		
Less than 8,000 sq. ft.		
<b>Single Family Sub-total</b>	<b>13,671.5</b>	<b>100.0%</b>

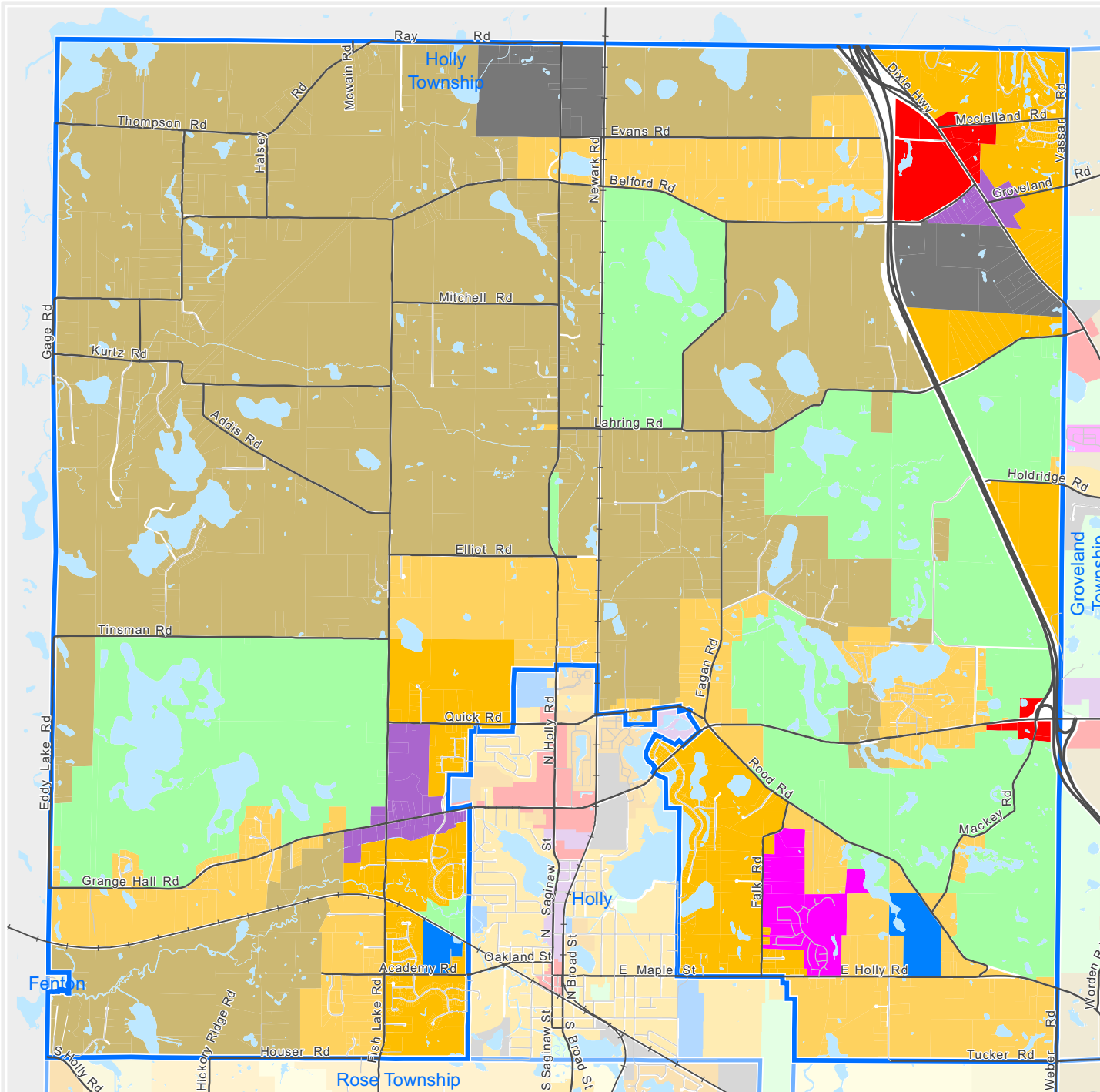
### Composite Master Plan by Area

- Single Family Residential
- Multiple Family
- Mobile Home Park
- Commercial/Office
- Industrial
- Public/Institutional
- Recreation/Conservation
- Mixed Use
- Reclamation Plan
- Water
- Railroad Right-of-Way
- Road Right-of-Way



For more information, maps, or questions about this data, please contact Oakland County Economic Development at (248) 858-0720.

These statistics represent a generalized future land use based on each community's master plan. Right-of-way and water figures are based on existing conditions.



**OAKLAND**  
COUNTY MICHIGAN  
ECONOMIC DEVELOPMENT

Executive Office Building  
2100 Pontiac Lake Road, Bldg. 41W  
Waterford, MI 48328-0412  
248.858.0720  
[www.oakgov.com/luz](http://www.oakgov.com/luz)

## Composite Master Plan Township of Holly

**Legend**

- Single Family, 10 acres or greater
- Single Family, 5 to 9.9 acres
- Single Family, 2.5 to 4.9 acres
- Single Family, 1 to 2.4 acres
- Single Family, 14,000 to 43,559 sq. ft.
- Single Family, 8,000 to 13,999 sq. ft.
- Single Family, Less than 8,000 sq. ft.
- Multiple Family Residential
- Mobile Home Park
- Commercial/Office
- Industrial
- Public/Institutional
- Recreation/Conservation
- Mixed Use
- Reclamation Plan

This map represents a generalized future land use based on each community's master plan.

1 inch = 4,650 feet

*Map created on January 9, 2023*

The information provided herewith has been compiled from recorded deeds, plats, tax maps, surveys and other public records. It is not a legally recorded map or survey and is not intended to be used as one. Users should consult the information sources mentioned above when questions arise.