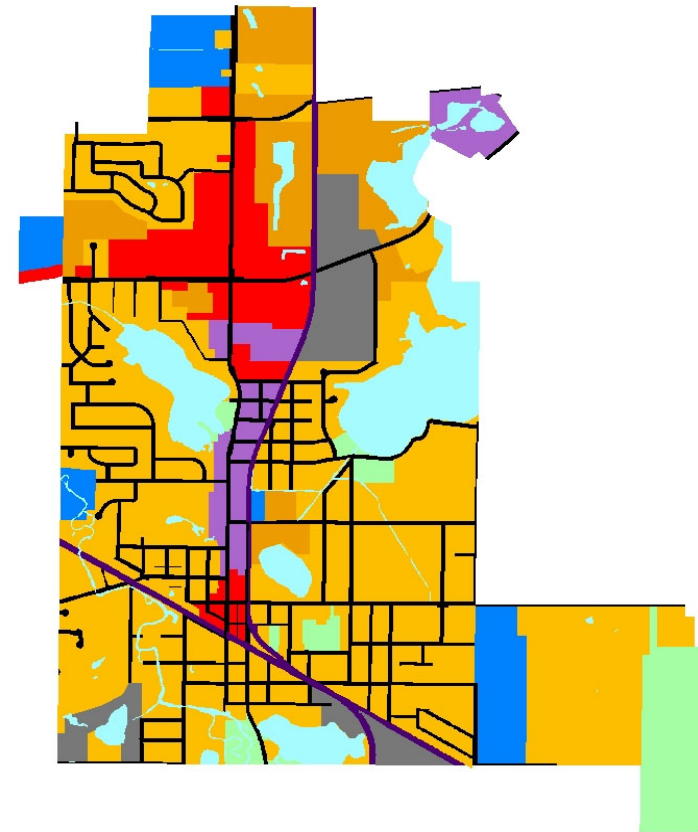
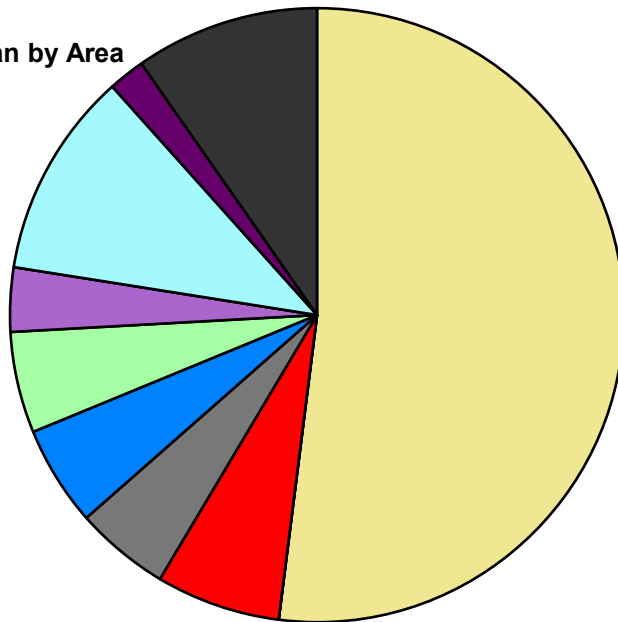


Land Use	Area (ac.)	Area (%)
Single Family Residential	1,012.5	52.0%
Multiple Family		
Mobile Home Park		
Commercial/Office	127.7	6.6%
Industrial	97.0	5.0%
Public/Institutional	102.6	5.3%
Recreation/Conservation	103.8	5.3%
Mixed Use	65.8	3.4%
Reclamation Plan		
Water	211.9	10.9%
Railroad Right-of-Way	37.6	1.9%
Road Right-of-Way	188.7	9.7%
Total	1,947.4	100.0%

Single Family by Lot Size	Area (ac.)	Area (%)
10 acres or greater		
5 to 9.9 acres		
2.5 to 4.9 acres		
1 to 2.4 acres		
14,000 to 43,559 sq. ft.		
8,000 to 13,999 sq. ft.	852.1	84.2%
Less than 8,000 sq. ft.	160.3	15.8%
Single Family Sub-total	1,012.5	100.0%

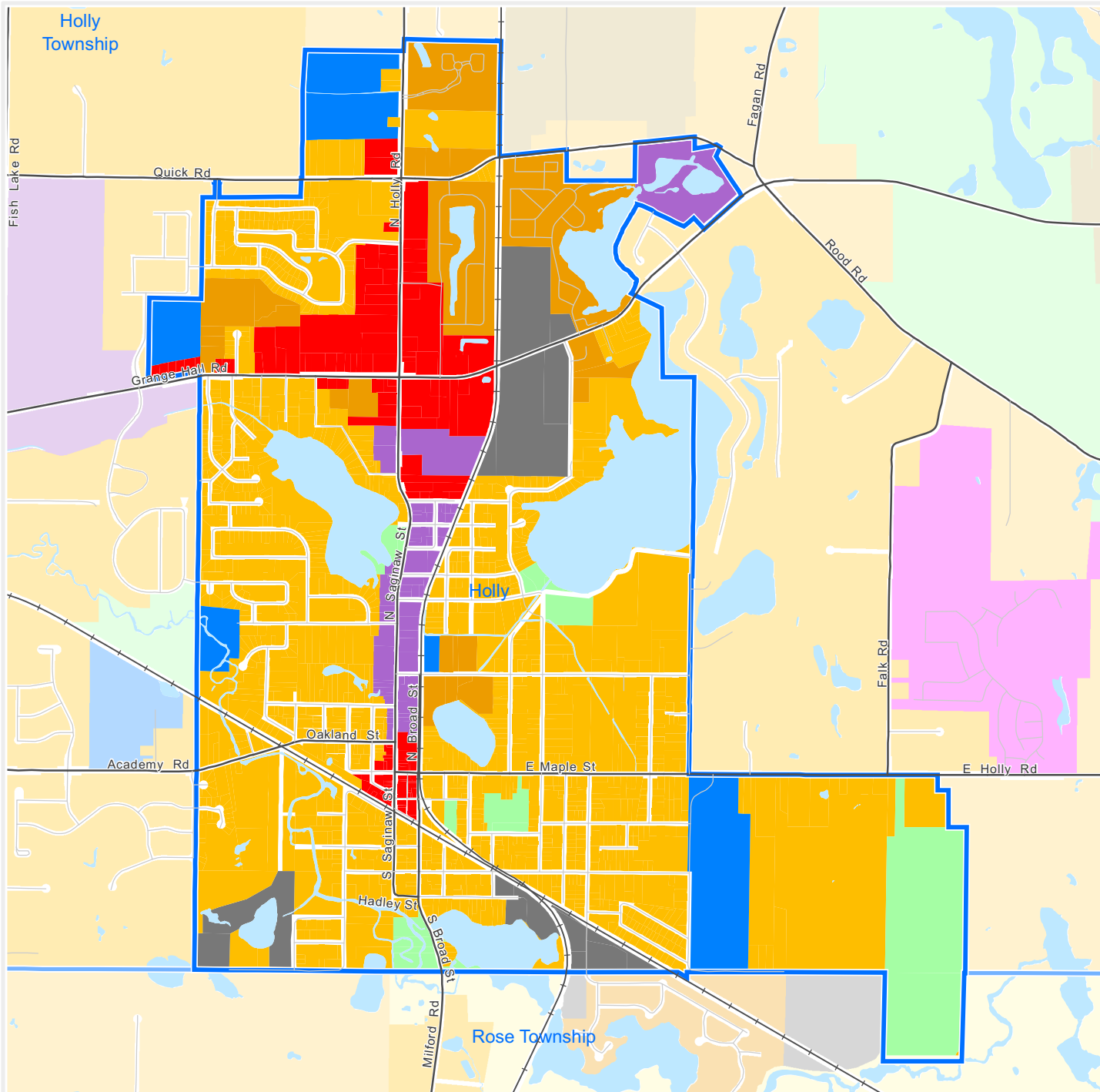
Composite Master Plan by Area

- Single Family Residential
- Multiple Family
- Mobile Home Park
- Commercial/Office
- Industrial
- Public/Institutional
- Recreation/Conservation
- Mixed Use
- Reclamation Plan
- Water
- Railroad Right-of-Way
- Road Right-of-Way



For more information, maps, or questions about this data, please contact Oakland County Economic Development at (248) 858-0720.

These statistics represent a generalized future land use based on each community's master plan. Right-of-way and water figures are based on existing conditions.



Executive Office Building
 2100 Pontiac Lake Road, Bldg. 41W
 Waterford, MI 48328-0412
 248.858.0720
www.oakgov.com/luz

Composite Master Plan

Village of Holly

Legend

- Single Family, 10 acres or greater
- Single Family, 5 to 9.9 acres
- Single Family, 2.5 to 4.9 acres
- Single Family, 1 to 2.4 acres
- Single Family, 14,000 to 43,559 sq. ft.
- Single Family, 8,000 to 13,999 sq. ft.
- Single Family, Less than 8,000 sq. ft.
- Multiple Family Residential
- Mobile Home Park
- Commercial/Office
- Industrial
- Public/Institutional
- Recreation/Conservation
- Mixed Use
- Reclamation Plan

This map represents a generalized future land use based on each community's master plan.

1 inch = 1,970 feet

Map created on January 9, 2023

The information provided herewith has been compiled from recorded deeds, plats, tax maps, surveys and other public records. It is not a legally recorded map or survey and is not intended to be used as one. Users should consult the information sources mentioned above when questions arise.