

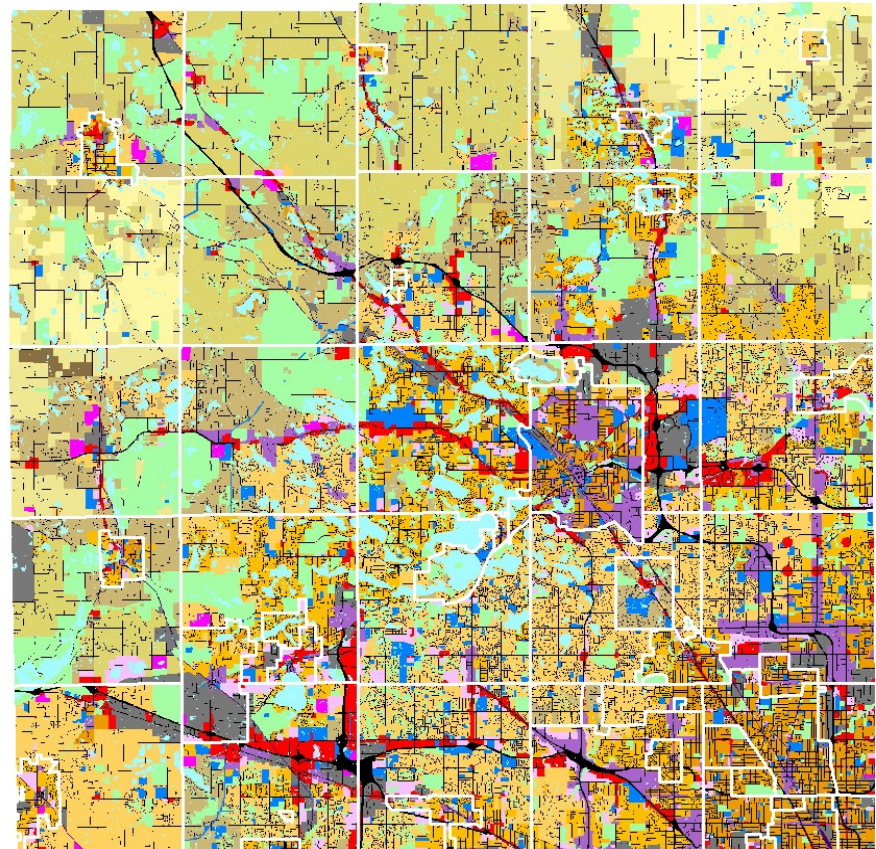
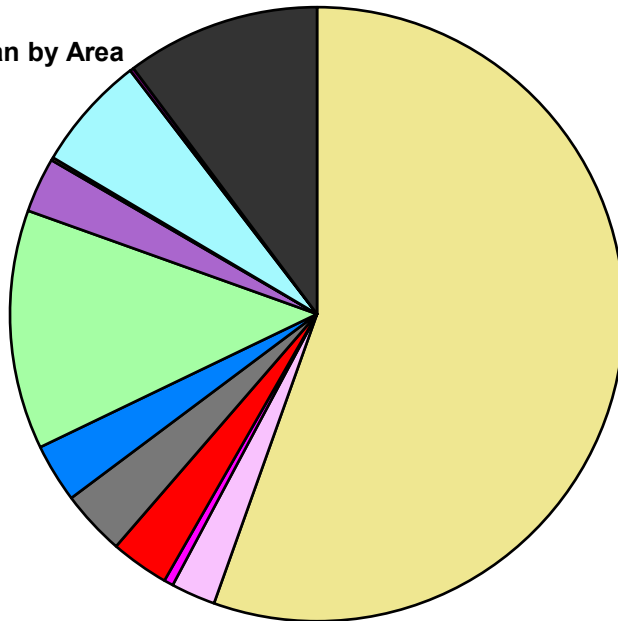
Oakland County Composite Master Plan Statistics

Land Use	Area (ac.)	Area (%)
Single Family Residential	321,909.9	55.4%
Multiple Family	13,597.3	2.3%
Mobile Home Park	2,822.8	0.5%
Commercial/Office	17,883.0	3.1%
Industrial	19,860.2	3.4%
Public/Institutional	17,919.5	3.1%
Recreation/Conservation	73,167.7	12.6%
Mixed Use	16,870.2	2.9%
Reclamation Plan	817.4	0.1%
Water	35,247.3	6.1%
Railroad Right-of-Way	1,180.4	0.2%
Road Right-of-Way	59,273.1	10.2%
Total	580,548.7	100.0%

Single Family by Lot Size	Area (ac.)	Area (%)
10 acres or greater	26,439.4	8.2%
5 to 9.9 acres	22,164.0	6.9%
2.5 to 4.9 acres	65,566.5	20.4%
1 to 2.4 acres	54,949.8	17.1%
14,000 to 43,559 sq. ft.	82,634.8	25.7%
8,000 to 13,999 sq. ft.	49,394.1	15.3%
Less than 8,000 sq. ft.	20,761.2	6.4%
Single Family Sub-total	321,909.9	100.0%

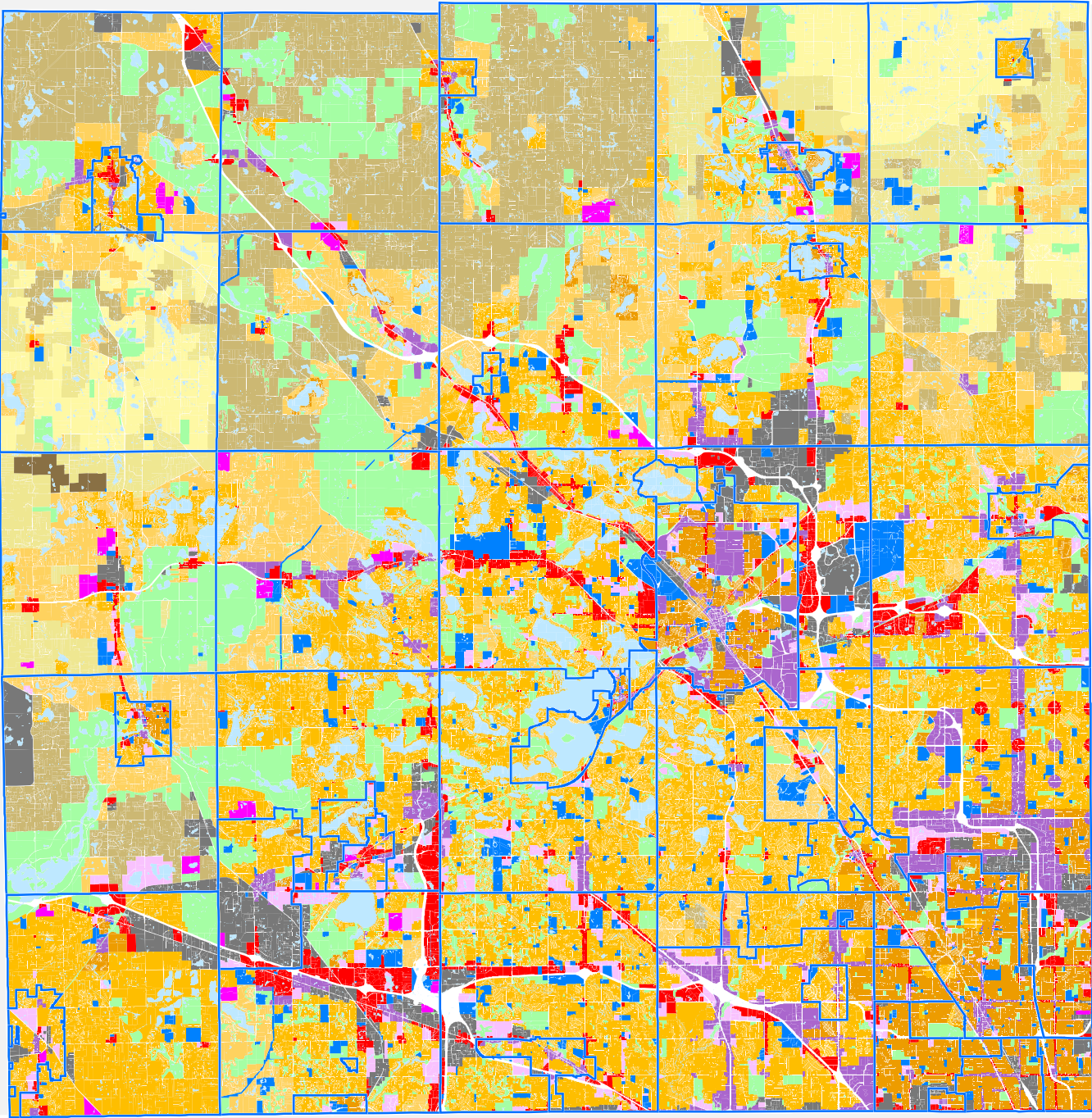
Composite Master Plan by Area

- Single Family Residential
- Multiple Family
- Mobile Home Park
- Commercial/Office
- Industrial
- Public/Institutional
- Recreation/Conservation
- Mixed Use
- Reclamation Plan
- Water
- Railroad Right-of-Way
- Road Right-of-Way



For more information, maps, or questions about this data, please contact Oakland County Economic Development at (248) 858-0720.

These statistics represent a generalized future land use based on each community's master plan. Right-of-way and water figures are based on existing conditions.



OAKLAND
 COUNTY MICHIGAN
 ECONOMIC DEVELOPMENT

Executive Office Building
 2100 Pontiac Lake Road, Bldg. 41W
 Waterford, MI 48328-0412
 248.858.0720
www.oakgov.com/luz

Composite Master Plan Oakland County

Legend

- Single Family, 10 acres or greater
- Single Family, 5 to 9.9 acres
- Single Family, 2.5 to 4.9 acres
- Single Family, 1 to 2.4 acres
- Single Family, 14,000 to 43,559 sq. ft.
- Single Family, 8,000 to 13,999 sq. ft.
- Single Family, Less than 8,000 sq. ft.
- Multiple Family Residential
- Mobile Home Park
- Commercial/Office
- Industrial
- Public/Institutional
- Recreation/Conservation
- Mixed Use
- Reclamation Plan

This map represents a generalized future land use based on each community's master plan.

1 inch = 4.3 miles

Map created on January 9, 2023

The information provided herewith has been compiled from recorded deeds, plats, tax maps, surveys and other public records. It is not a legally recorded map or survey and is not intended to be used as one. Users should consult the information sources mentioned above when questions arise.