

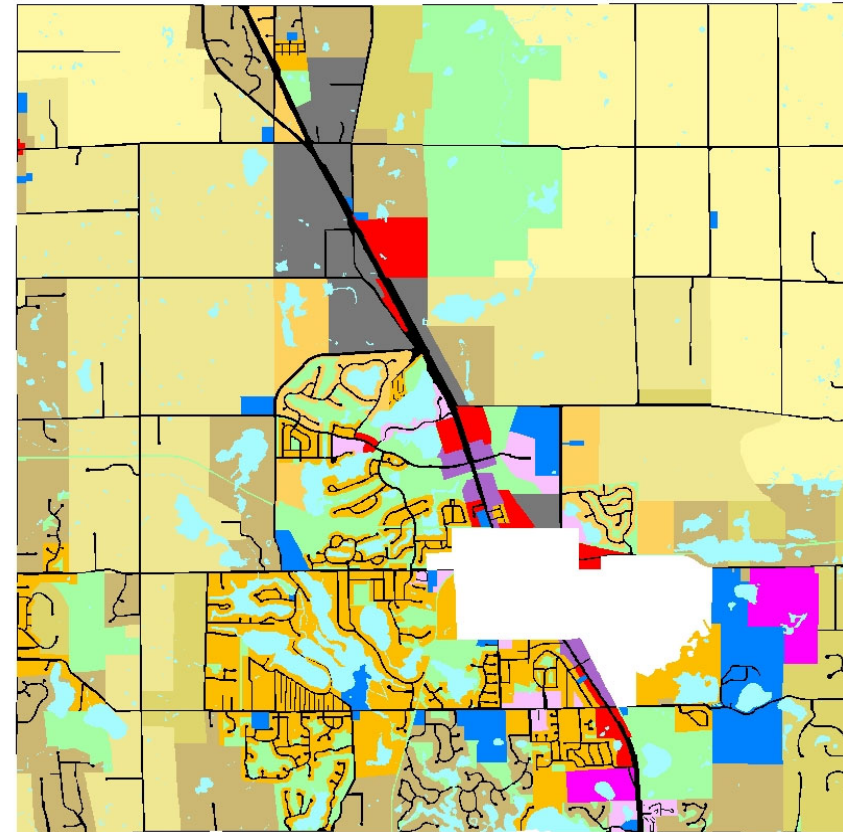
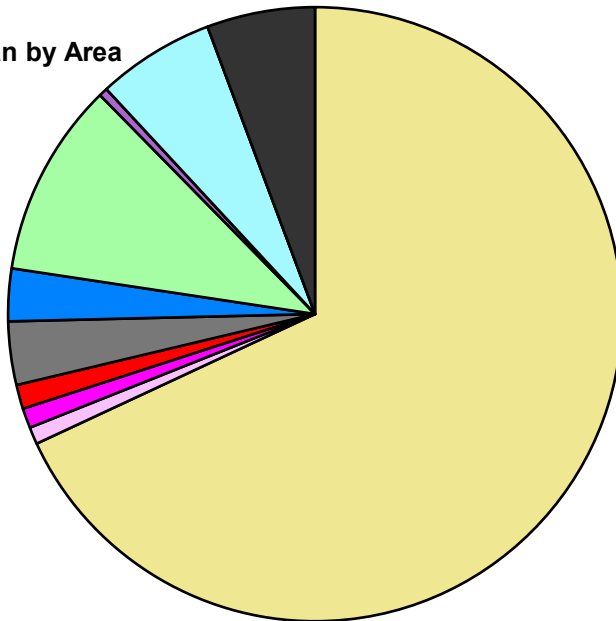
## Township of Oxford Composite Master Plan Statistics

Land Use	Area (ac.)	Area (%)
Single Family Residential	14,763.2	68.1%
Multiple Family	196.5	0.9%
Mobile Home Park	226.3	1.0%
Commercial/Office	274.0	1.3%
Industrial	724.5	3.3%
Public/Institutional	600.9	2.8%
Recreation/Conservation	2,225.9	10.3%
Mixed Use	98.8	0.5%
Reclamation Plan		
Water	1,344.0	6.2%
Railroad Right-of-Way		
Road Right-of-Way	1,233.6	5.7%
<b>Total</b>	<b>21,687.7</b>	<b>100.0%</b>

Single Family by Lot Size	Area (ac.)	Area (%)
10 acres or greater	4,216.1	28.6%
5 to 9.9 acres	4,624.1	31.3%
2.5 to 4.9 acres	1,097.0	7.4%
1 to 2.4 acres	2,538.7	17.2%
14,000 to 43,559 sq. ft.	566.0	3.8%
8,000 to 13,999 sq. ft.	1,721.4	11.7%
Less than 8,000 sq. ft.		
<b>Single Family Sub-total</b>	<b>14,763.2</b>	<b>100.0%</b>

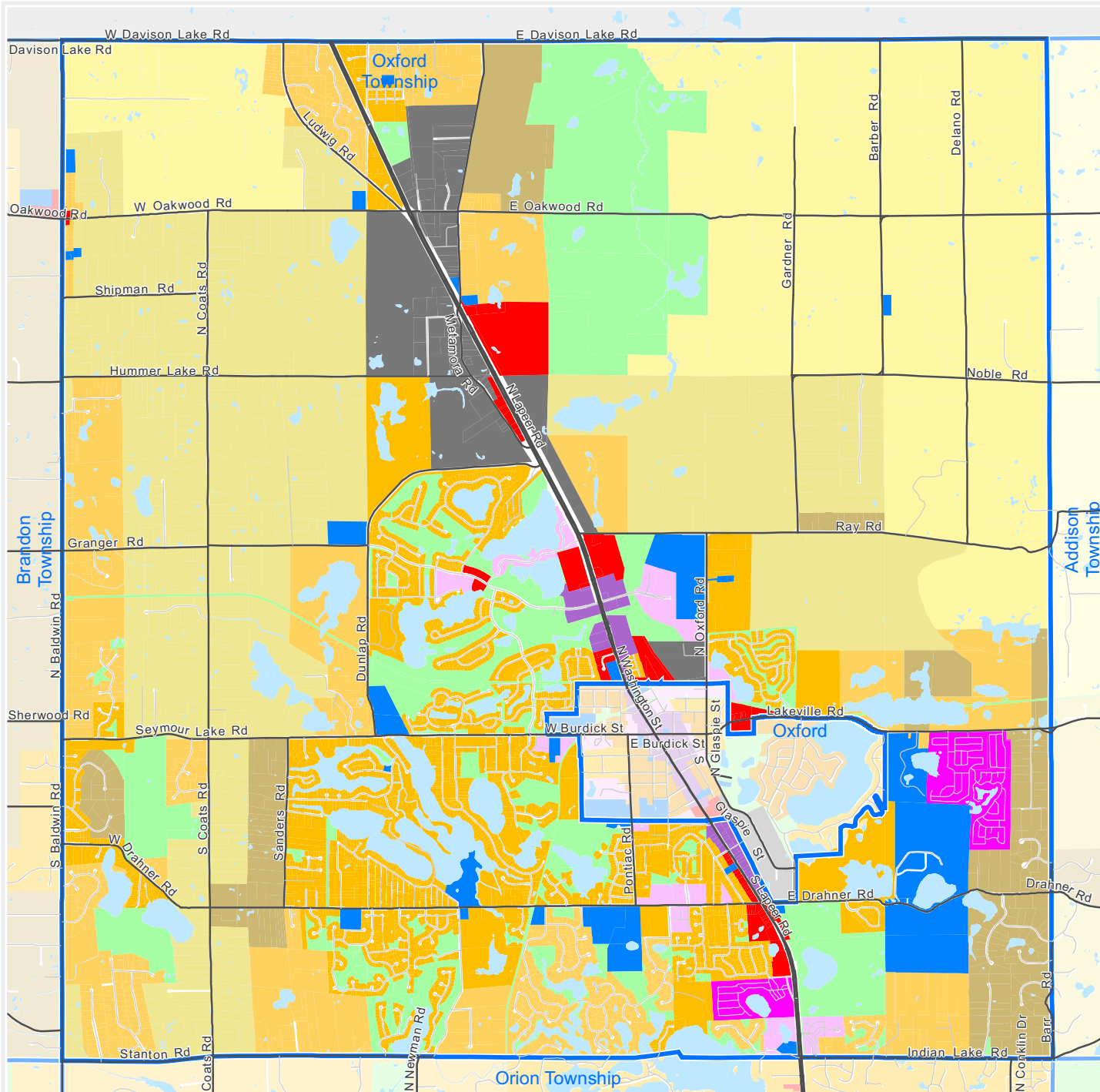
### Composite Master Plan by Area

- Single Family Residential
- Multiple Family
- Mobile Home Park
- Commercial/Office
- Industrial
- Public/Institutional
- Recreation/Conservation
- Mixed Use
- Reclamation Plan
- Water
- Railroad Right-of-Way
- Road Right-of-Way



For more information, maps, or questions about this data, please contact Oakland County Economic Development at (248) 858-0720.

These statistics represent a generalized future land use based on each community's master plan. Right-of-way and water figures are based on existing conditions.



The information provided herewith has been compiled from recorded deeds, plats, tax maps, surveys and other public records. It is not a legally recorded map or survey and is not intended to be used as one. Users should consult the information sources mentioned above when questions arise.

Executive Office Building  
 2100 Pontiac Lake Road, Bldg. 41W  
 Waterford, MI 48328-0412  
 248.858.0720  
[www.oakgov.com/luz](http://www.oakgov.com/luz)

## Composite Master Plan Township of Oxford

### Legend

- Single Family, 10 acres or greater
- Single Family, 5 to 9.9 acres
- Single Family, 2.5 to 4.9 acres
- Single Family, 1 to 2.4 acres
- Single Family, 14,000 to 43,559 sq. ft.
- Single Family, 8,000 to 13,999 sq. ft.
- Single Family, Less than 8,000 sq. ft.
- Multiple Family Residential
- Mobile Home Park
- Commercial/Office
- Industrial
- Public/Institutional
- Recreation/Conservation
- Mixed Use
- Reclamation Plan

This map represents a generalized future land use based on each community's master plan.

1 inch = 4,630 feet

Map created on January 9, 2023