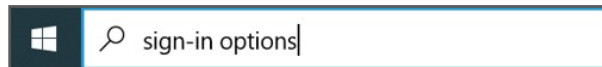


Oakland Sesame – Set Up Windows Hello PIN

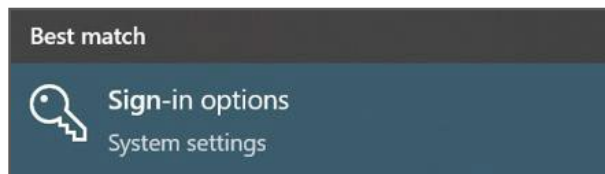
Step 1: Enroll Windows Hello PIN in Oakland Sesame

Refer to the following instructions to set up a built-in **Windows Hello Camera** in **Oakland Sesame** on your County-owned workstation.

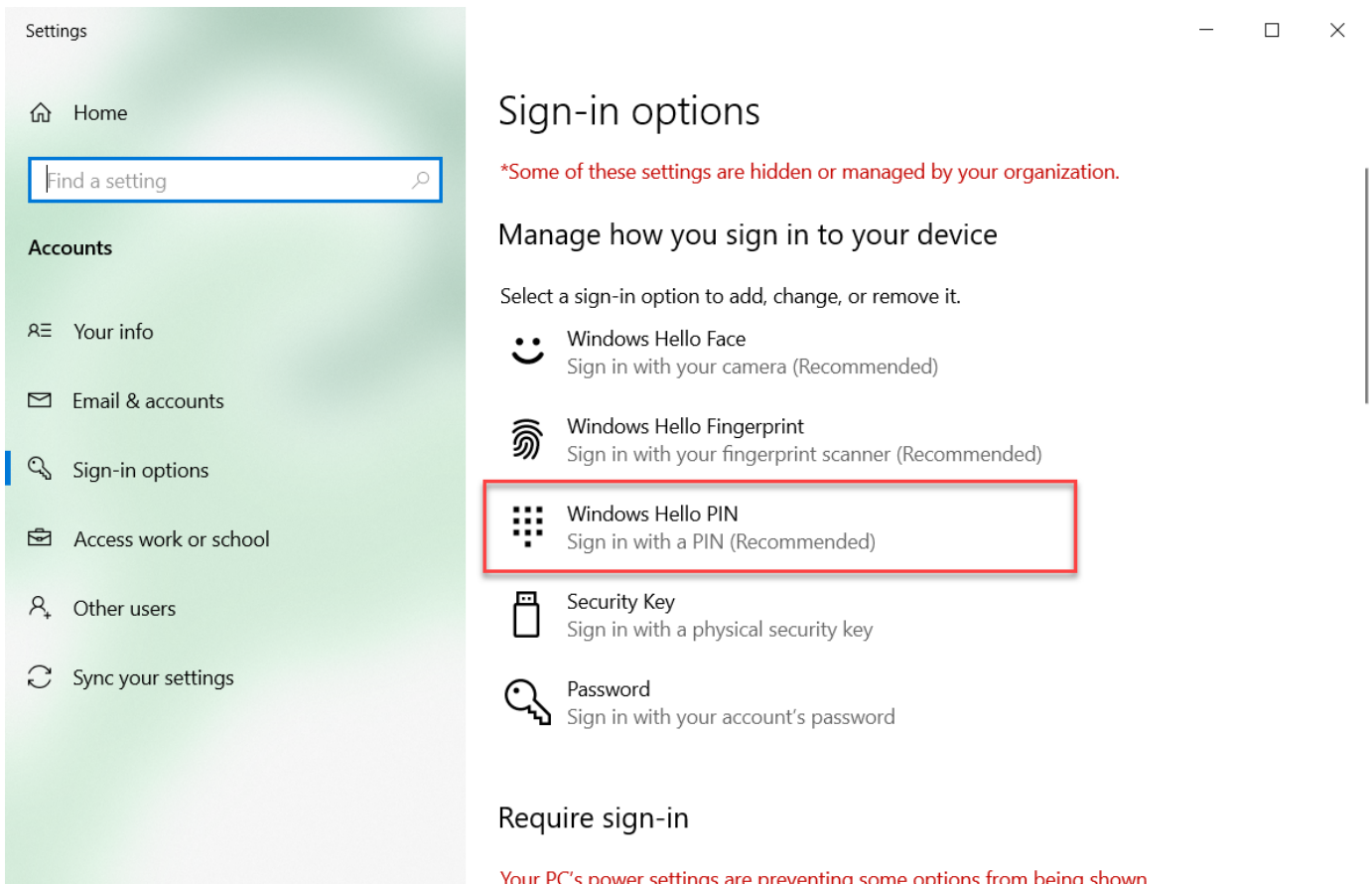
1. From the **Windows Search** bar, type **sign-in options**:



2. Select **Sign-in options** from the popup **Start** menu.

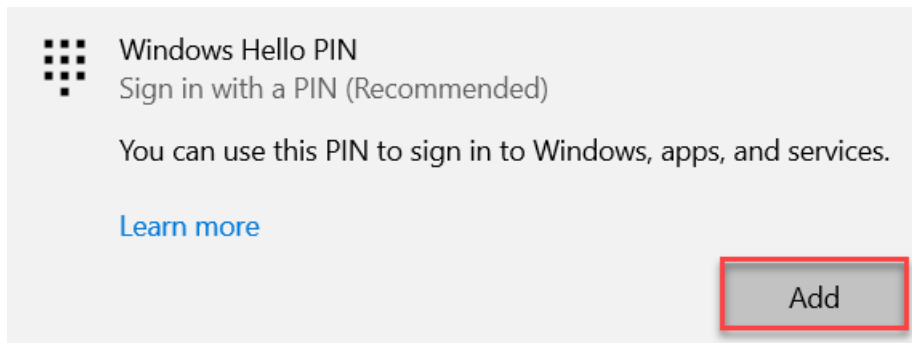


3. From the **Settings** screen in the **Sign-in options** section, click **Windows Hello PIN**.

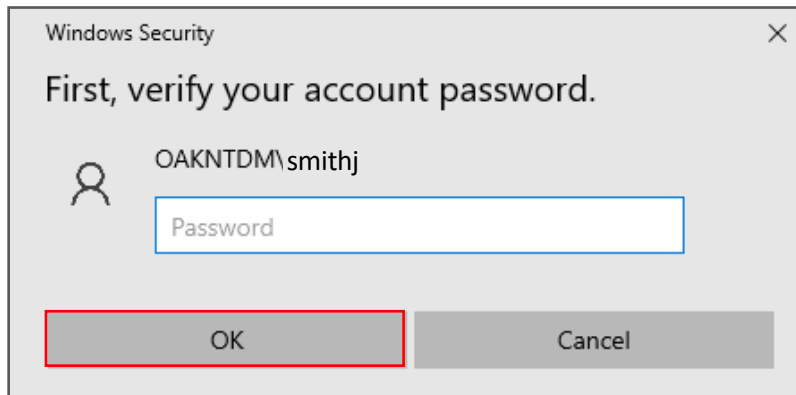


Oakland Sesame – Set Up Windows Hello PIN

4. From the **Windows Hello PIN** window, click the **Add** button.



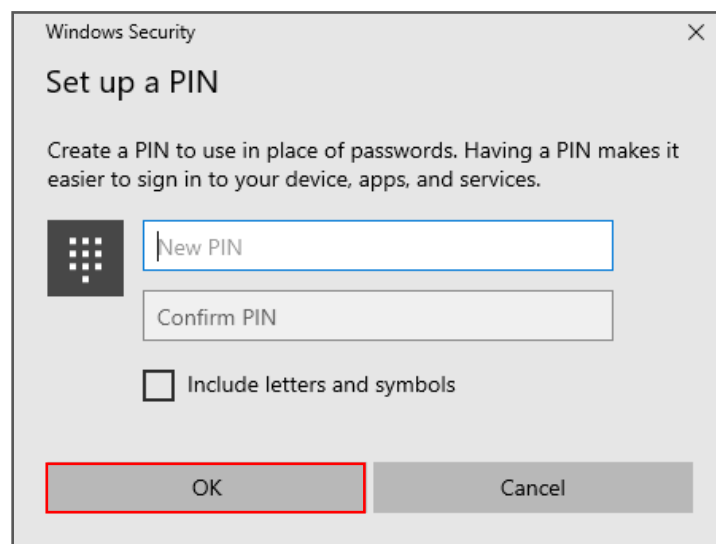
5. Verify your account password. From the **Windows Security** screen, type your *IAM* password and click the **OK** button.



Oakland Sesame – Set Up Windows Hello PIN

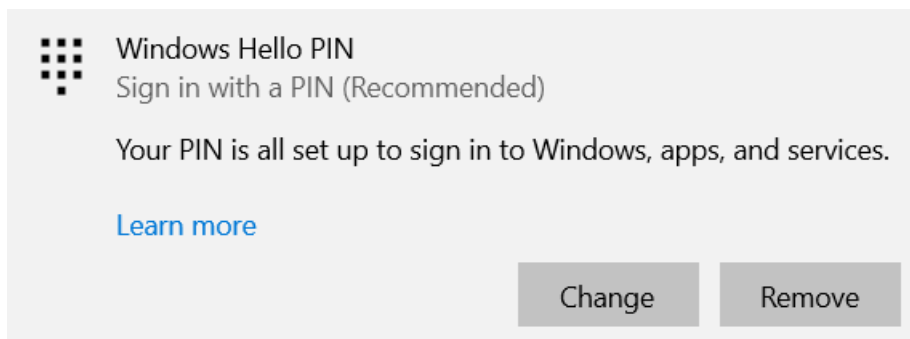
6. From the **Set up a PIN** screen, in the **New PIN** field, type a new PIN. When selecting a new PIN, keep in mind that PINs:
- MUST be 6 numerical characters
 - Pattern cannot be repeating or in a numerical order (**222333**, **123456**)
 - Letters and symbols are not required however, to include checkmark the **Include letters and symbols** option.

Note: If applicable, click the **PIN requirements** link for more information.



7. In the **Confirm PIN** field, type your PIN again and click the **OK** button.

8. The following screen will be displayed confirming that PIN setup is complete:



9. From the **Settings** screen, click the **Close (X)** button in the top right corner.

Oakland Sesame – Set Up Windows Hello PIN

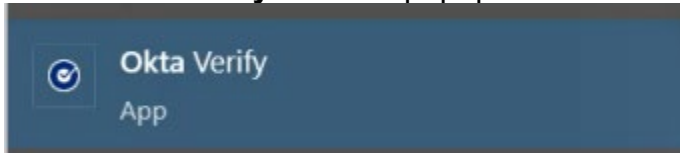
Step 2: Enroll Windows Hello Camera into Okta Fastpass (New way to MFA)

Once setup is complete for **Windows Hello Camera** on your County-owned workstation, you **MUST** enroll into OKTA Fastpass.

10. From the **Windows Search** bar, type **Okta Verify**:

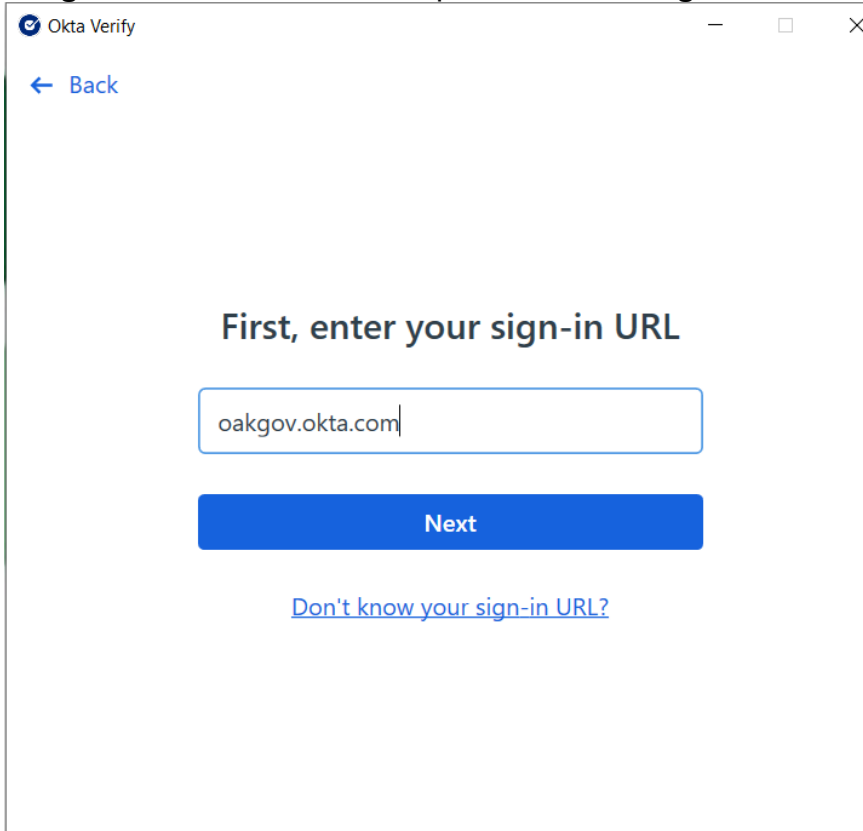


11. Select **Okta Verify** from the popup **Start** menu.



12. Click "**Get Started**".

You will be presented with the sign-in URL screen. This should be auto filled with **oakgov.okta.com**. if it is not, please enter **oakgov.okta.com**.



Click **Next**

Oakland Sesame – Set Up Windows Hello PIN

13. You will now be prompted to log into Okta and/or validate using your Multifactor of choice. Follow the onscreen instructions for validating your identity. (Your options may look different)

OAKLAND COUNTY MICHIGAN

Verify it's you with a security method

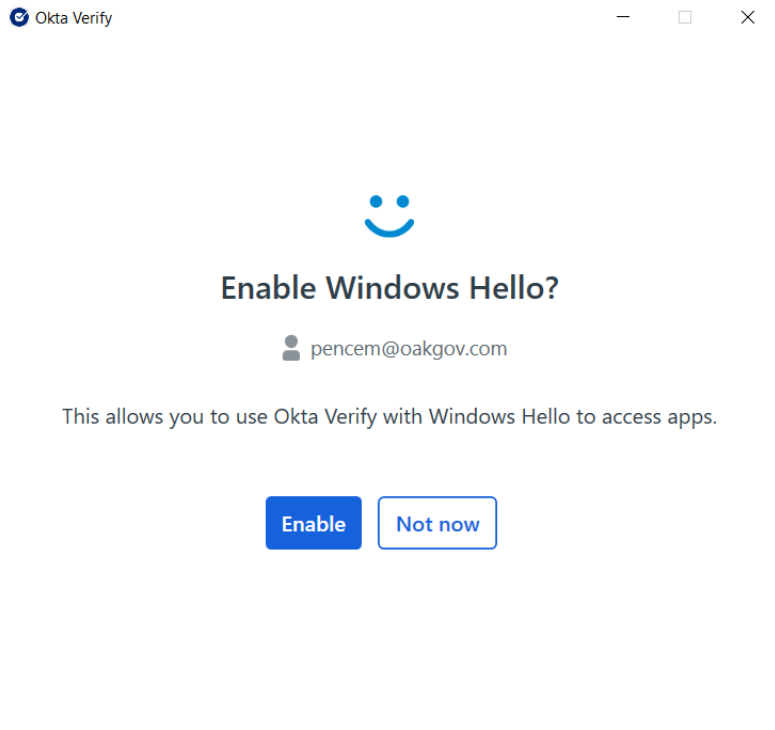
pencem@oakgov.com

Select from the following options

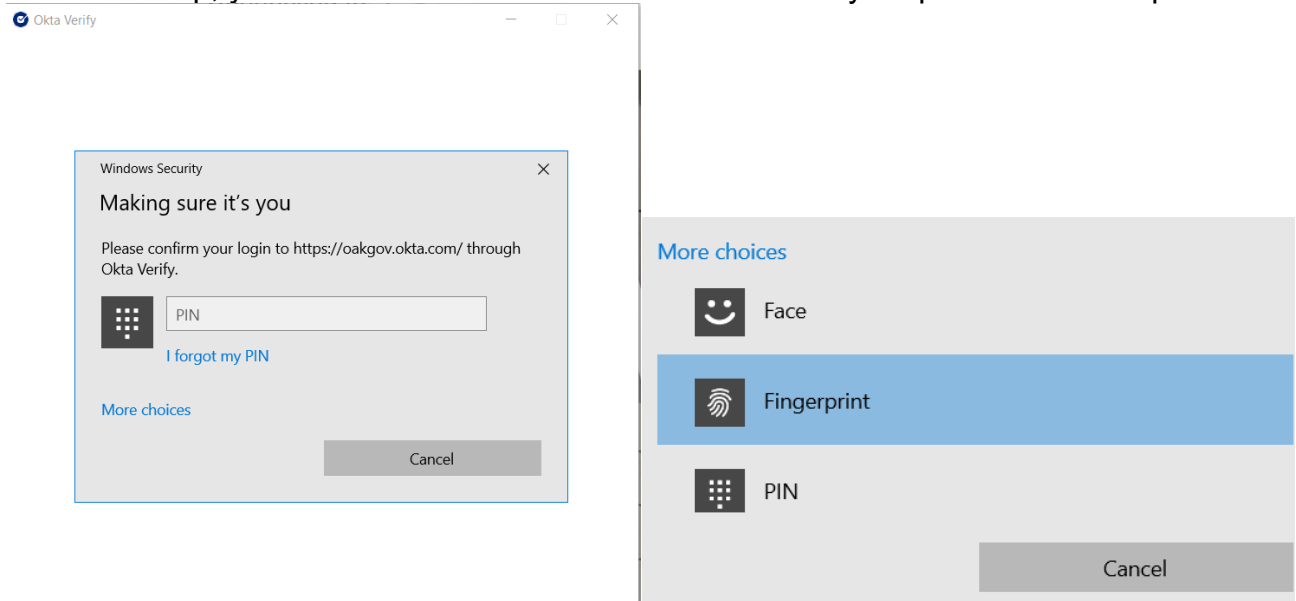
- Enter a code Okta Verify [Select](#)
- Get a push notification Okta Verify [Select](#)
- Password [Select](#)
- Phone +1 XXX-XXX-2546 [Select](#)
- Security Key or Biometric Authenticator [Select](#)

14. After choosing your MFA option Okta Verify should access you to enable Windows Hello. Click **Enable**

Oakland Sesame – Set Up Windows Hello PIN

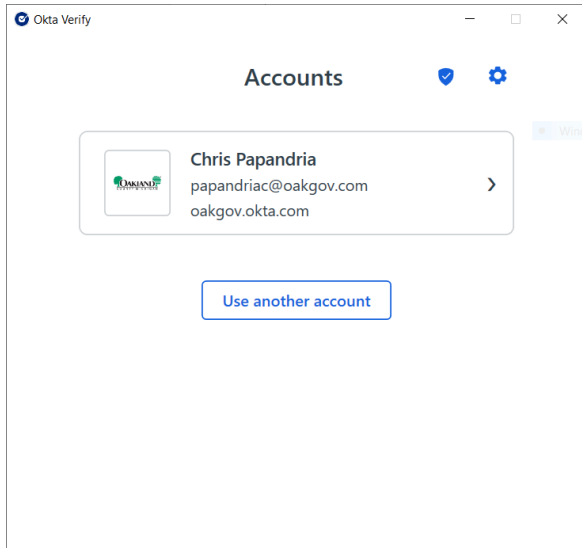


15. If you already have Windows Hello setup on your computer, you will be prompted to verify your identity with either a faceID, Fingerprint or PIN. If you have multiple Windows Hello devices set up, you can click on **More Choices** and choice your preferred MFA option



Oakland Sesame – Set Up Windows Hello PIN

16. Upon completion you will be presented the user Account screen.
The following is an example showing Okta Verify is successfully configured.



To Log into Windows Using Windows Hello PIN

1. From the **Windows** login screen, click the **Sign-in options** link.

- Click the  (Key Pad).
- Enter in your 6 digit PIN and hit **Enter**.