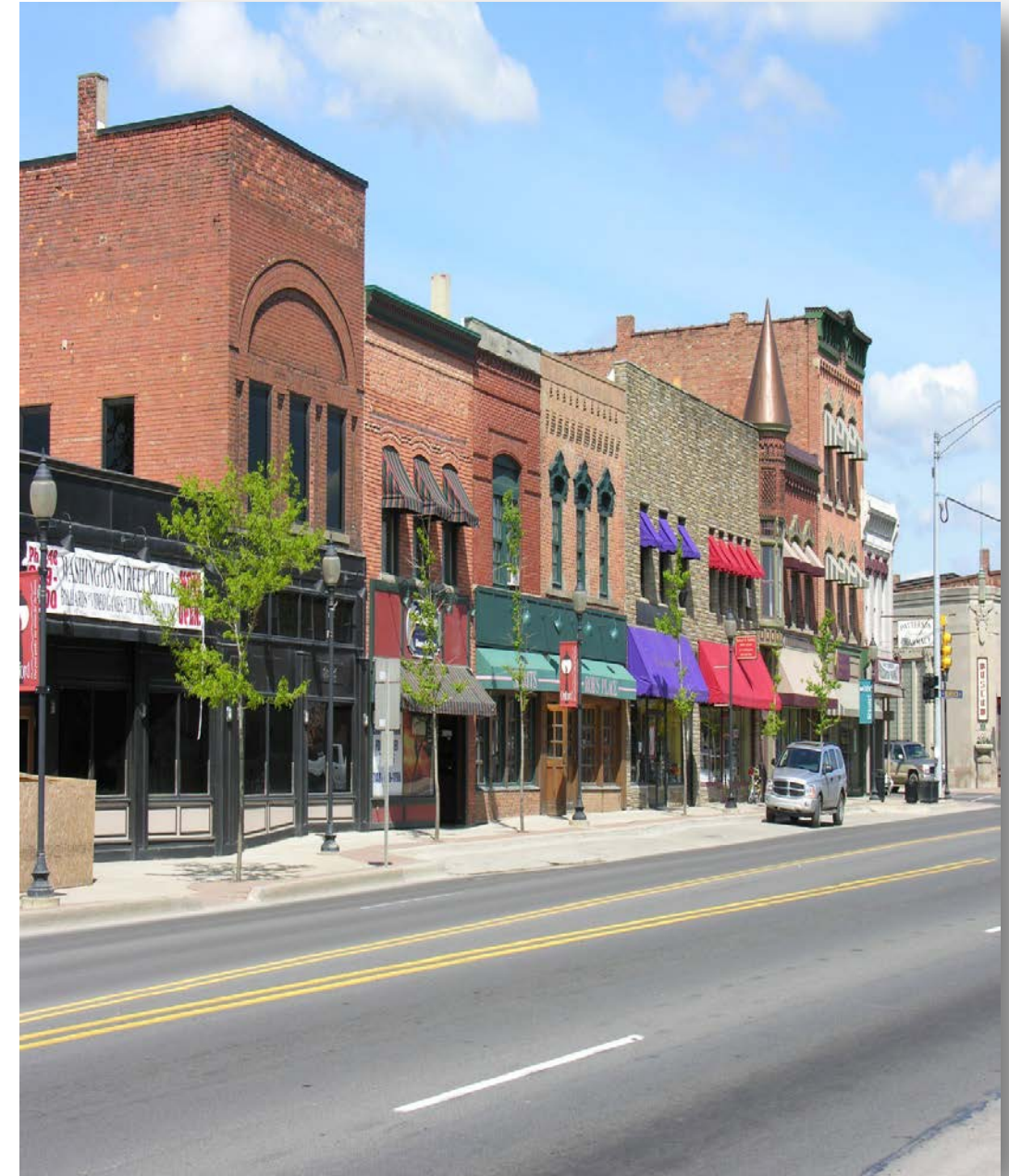




Village of Oxford

2024

Residential by
Address



PARCEL ID	ADDR	STREET	NBHD	STYLE	CLASS	MOD	YEAR BUILT	SQFT	TCV	SALE PRICE	SALE DATE	2023 AV	2024 AV	2024 TV	LAND VALUE	LAND SIZE
PO-04-22-377-007	11	1ST ST	RVX	Other	C	5	1888	2,552	\$413,800	\$340,000	10/27/2023	\$136,090	\$206,900	\$206,900	\$35,910	0.254
PO-04-22-377-006	15	1ST ST	RVX	SingleFamily	CD	0	1888	2,100	\$229,733			\$104,100	\$114,870	\$100,780	\$35,910	0.236
PO-04-22-377-005	19	1ST ST	RVX	Colonial/2Sty	CD	0	1890	2,393	\$276,380			\$124,370	\$138,190	\$63,060	\$46,305	0.323
PO-04-22-379-004	22	1ST ST	RVX	Colonial/2Sty	C	0	1901	1,649	\$229,942			\$106,980	\$114,970	\$55,720	\$35,910	0.274
PO-04-22-377-004	23	1ST ST	RVX	SingleFamily	CD	0	1888	1,343	\$171,768			\$80,570	\$85,880	\$43,140	\$35,910	0.269
PO-04-22-379-003	26	1ST ST	RVX	SingleFamily	C	0	1904	1,452	\$211,311			\$98,720	\$105,660	\$91,080	\$35,910	0.286
PO-04-22-377-003	27	1ST ST	RVX	SingleFamily	CD	0	1920	2,176	\$271,903			\$125,910	\$135,950	\$66,020	\$35,910	0.273
PO-04-22-377-002	29	1ST ST	RVX	SingleFamily	C	10	1930	1,906	\$339,429			\$156,180	\$169,710	\$129,190	\$35,910	0.24
PO-04-22-379-002	32	1ST ST	RVX	SingleFamily	C	0	1901	1,976	\$241,082			\$110,120	\$120,540	\$56,670	\$35,910	0.247
PO-04-22-379-001	38	1ST ST	RVX	SingleFamily	C	0	1901	1,426	\$213,013			\$97,180	\$106,510	\$55,460	\$35,910	0.238
PO-04-22-377-001	39	1ST ST	RVX	Ranch	C	0	1940	552	\$112,090	\$155,000	9/19/2022	\$49,930	\$56,050	\$52,420	\$35,910	0.173
PO-04-22-376-010	43	1ST ST	RVX	SingleFamily	C	-5	1992	1,572	\$274,587			\$126,380	\$137,290	\$71,190	\$35,910	0.206
PO-04-22-376-009	45	1ST ST	RVX	Colonial/2Sty	C	10	1900	2,320	\$296,697			\$135,840	\$148,350	\$112,040	\$35,910	0.259
PO-04-22-378-018	46	1ST ST	RVX	Colonial/2Sty	C	0	1888	1,371	\$244,799			\$114,480	\$122,400	\$120,200	\$35,910	0.267
PO-04-22-378-017	48	1ST ST	RVX	Ranch	C	-5	1993	1,134	\$265,112			\$122,450	\$132,560	\$68,830	\$35,910	0.217
PO-04-22-378-019	50	1ST ST	RVX	Ranch	C	5	1948	1,810	\$297,369			\$139,050	\$148,680	\$85,640	\$46,305	0.343
PO-04-22-376-008	51	1ST ST	RVX	Bungalow	CD	0	1930	1,160	\$210,934	\$224,000	7/21/2021	\$92,020	\$105,470	\$94,690	\$59,325	0.518
PO-04-22-378-002	52	1ST ST	RVX	Ranch	C	0	1960	1,560	\$281,528			\$130,310	\$140,760	\$78,870	\$35,910	0.24
PO-04-22-376-007	55	1ST ST	RVX	Ranch	C	-5	1955	1,230	\$216,328			\$100,130	\$108,160	\$63,440	\$46,305	0.393
PO-04-22-378-001	56	1ST ST	RVX	Ranch	C	-5	1970	960	\$212,064			\$98,200	\$106,030	\$86,620	\$35,910	0.239
PO-04-22-376-006	59	1ST ST	RVX	Bungalow	C	-5	1967	1,640	\$331,880			\$154,500	\$165,940	\$83,120	\$46,305	0.401
PO-04-22-376-005	61	1ST ST	RVX	Ranch	C	-5	1970	1,354	\$288,535			\$134,300	\$144,270	\$78,540	\$46,305	0.401
PO-04-22-352-005	62	1ST ST	RVX	Ranch	C	-5	1960	1,045	\$183,272			\$87,300	\$91,640	\$54,180	\$46,305	0.473
PO-04-22-376-004	65	1ST ST	RVX	Ranch	C	-5	1974	1,365	\$306,394			\$139,060	\$153,200	\$122,390	\$46,305	0.313
PO-04-22-376-003	67	1ST ST	RVX	Ranch	C	-5	1968	1,126	\$227,890			\$104,490	\$113,950	\$63,310	\$46,305	0.346
PO-04-22-376-002	71	1ST ST	RVX	Other	C	10	1975	1,887	\$408,063			\$187,000	\$204,030	\$103,150	\$46,305	0.346
PO-04-22-352-004	82	1ST ST	RVX	Ranch	C	-5	1968	988	\$219,130			\$102,010	\$109,570	\$60,750	\$35,910	0.251
PO-04-22-376-001	87	1ST ST	RVX	Ranch	C	0	1968	1,134	\$283,820	\$245,000	8/8/2022	\$125,790	\$141,910	\$132,070	\$46,305	0.364
PO-04-22-352-003	88	1ST ST	RVX	Ranch	C	-5	1968	1,185	\$249,680			\$112,640	\$124,840	\$63,990	\$46,305	0.314
PO-04-22-352-002	94	1ST ST	RVX	Other	C	5	1970	1,588	\$309,648	\$291,000	7/20/2023	\$130,500	\$154,820	\$154,820	\$46,305	0.315
PO-04-22-352-001	98	1ST ST	RVX	Ranch	C	-5	1970	941	\$211,791			\$95,680	\$105,900	\$58,730	\$46,305	0.333
PO-04-26-130-001	914	ABINGDON ST	R-X1	Colonial/2Sty	C	10	1990	1,647	\$291,572			\$134,420	\$145,790	\$75,510	\$67,373	0.218
PO-04-26-130-002	920	ABINGDON ST	R-X1	Colonial/2Sty	C	10	1990	2,042	\$288,356			\$132,380	\$144,180	\$113,500	\$57,070	0.176
PO-04-26-130-003	926	ABINGDON ST	R-X1	Colonial/2Sty	C	10	1989	2,178	\$335,866			\$154,140	\$167,930	\$142,660	\$60,275	0.182
PO-04-26-129-008	927	ABINGDON ST	R-X1	Colonial/2Sty	BC	0	1989	2,052	\$366,398			\$167,650	\$183,200	\$91,840	\$58,326	0.194
PO-04-26-130-004	932	ABINGDON ST	R-X1	Colonial/2Sty	BC	0	1990	2,194	\$385,152	\$340,000	5/4/2022	\$176,060	\$192,580	\$184,860	\$59,456	0.243
PO-04-26-129-009	933	ABINGDON ST	R-X1	Colonial/2Sty	BC	0	1989	1,670	\$299,201			\$137,360	\$149,600	\$116,480	\$58,870	0.207
PO-04-26-129-010	939	ABINGDON ST	R-X1	Colonial/2Sty	BC	0	1989	2,188	\$390,235			\$178,440	\$195,120	\$97,040	\$63,007	0.285
PO-04-27-126-063	210	ASHLEY WAY	KVR	Other	BC	0	2000	1,329	\$306,814			\$126,740	\$153,410	\$94,600	\$25,410	1
PO-04-27-126-056	225	ASHLEY WAY	KVR	Other	C	10	1999	1,575	\$256,513			\$106,380	\$128,260	\$81,810	\$25,410	1
PO-04-27-126-062	240	ASHLEY WAY	KVR	Other	BC	0	2000	1,329	\$282,028			\$116,700	\$141,010	\$72,940	\$25,410	1
PO-04-27-126-055	255	ASHLEY WAY	KVR	Other	C	10	1999	1,311	\$236,295			\$98,180	\$118,150	\$64,030	\$25,410	1
PO-04-27-126-061	270	ASHLEY WAY	KVR	Other	BC	0	2000	1,329	\$281,297			\$116,400	\$140,650	\$54,900	\$25,410	1

PO-04-27-126-054	285	ASHLEY WAY	KVR	Other	C	10	1999	1,311	\$232,877			\$96,800	\$116,440	\$64,030	\$25,410	1
PO-04-26-205-001	207	ASPEN LN	R-L1	Colonial/2Sty	B	-10	2003	2,840	\$441,138			\$213,080	\$220,570	\$140,960	\$74,623	0.302
PO-04-26-251-012	212	ASPEN LN	R-L1	Colonial/2Sty	B	-10	2013	2,598	\$457,398			\$220,730	\$228,700	\$209,820	\$77,849	0.256
PO-04-26-205-011	215	ASPEN LN	R-L1	Colonial/2Sty	B	-10	2005	2,717	\$428,332			\$206,930	\$214,170	\$137,620	\$75,030	0.264
PO-04-26-251-013	220	ASPEN LN	R-L1	Colonial/2Sty	B	-10	2005	2,717	\$471,907			\$227,810	\$235,950	\$216,910	\$75,359	0.261
PO-04-26-205-010	223	ASPEN LN	R-L1	Colonial/2Sty	B	-10	2006	2,610	\$423,425			\$204,520	\$211,710	\$134,350	\$74,303	0.251
PO-04-26-205-009	231	ASPEN LN	R-L1	Colonial/2Sty	B	-10	2013	2,674	\$500,042			\$243,530	\$250,020	\$187,860	\$79,225	0.232
PO-04-26-180-011	502	BAY POINTE DR	R-L1	Colonial/2Sty	BC	0	2018	2,568	\$397,515	\$470,000	3/11/2022	\$185,210	\$198,760	\$194,470	\$34,903	0.228
PO-04-26-180-012	510	BAY POINTE DR	R-L1	Colonial/2Sty	B	-10	1998	3,013	\$428,230			\$200,520	\$214,120	\$161,720	\$34,021	0.223
PO-04-26-180-013	518	BAY POINTE DR	R-L1	Contemporary	B	-10	1997	2,357	\$356,078			\$165,880	\$178,040	\$158,700	\$34,234	0.211
PO-04-26-132-001	523	BAY POINTE DR	R-L1	Colonial/2Sty	B	-10	2000	3,163	\$470,085			\$220,520	\$235,040	\$176,370	\$34,242	0.312
PO-04-26-180-014	526	BAY POINTE DR	R-L1	Colonial/2Sty	B	-10	1997	2,389	\$325,007			\$150,870	\$162,500	\$117,100	\$34,827	0.184
PO-04-26-132-002	531	BAY POINTE DR	R-L1	Colonial/2Sty	B	0	1998	3,200	\$466,103			\$218,640	\$233,050	\$162,430	\$34,664	0.266
PO-04-26-180-015	534	BAY POINTE DR	R-L1	Colonial/2Sty	B	-10	1997	2,291	\$327,284			\$151,760	\$163,640	\$130,210	\$36,265	0.222
PO-04-26-251-007	539	BAY POINTE DR	R-L1	Colonial/2Sty	B	-10	1998	3,086	\$441,471	\$420,000	5/14/2021	\$213,490	\$220,740	\$203,240	\$80,384	0.282
PO-04-26-180-016	542	BAY POINTE DR	R-L	Colonial/2Sty	B	-10	1998	3,000	\$564,318			\$255,830	\$282,160	\$261,760	\$89,668	0.292
PO-04-26-251-006	547	BAY POINTE DR	R-L1	Colonial/2Sty	B	-5	1998	3,383	\$528,301			\$255,210	\$264,150	\$172,970	\$82,069	0.391
PO-04-26-180-017	550	BAY POINTE DR	R-L	Contemporary	B	10	1997	3,572	\$752,636			\$338,930	\$376,320	\$321,120	\$100,827	0.341
PO-04-26-251-005	555	BAY POINTE DR	R-L1	Colonial/2Sty	B	-10	1998	3,033	\$484,437			\$233,920	\$242,220	\$165,220	\$66,664	0.374
PO-04-26-252-001	558	BAY POINTE DR	R-L	Contemporary	B	10	1999	3,694	\$699,691			\$314,530	\$349,850	\$235,340	\$84,477	0.276
PO-04-26-251-004	563	BAY POINTE DR	R-L1	Colonial/2Sty	B	-10	1999	3,119	\$480,942			\$232,090	\$240,470	\$164,410	\$64,574	0.356
PO-04-26-252-002	566	BAY POINTE DR	R-L	SingleFamily	B	0	1998	3,174	\$607,075			\$273,450	\$303,540	\$205,030	\$83,281	0.26
PO-04-26-251-003	571	BAY POINTE DR	R-L1	SingleFamily	B	0	1999	3,174	\$495,542			\$239,090	\$247,770	\$169,370	\$65,967	0.319
PO-04-26-252-003	574	BAY POINTE DR	R-L	Colonial/2Sty	B	-5	1998	2,679	\$546,711			\$246,920	\$273,360	\$254,350	\$87,205	0.267
PO-04-26-251-002	579	BAY POINTE DR	R-L1	Colonial/2Sty	B	-10	1999	2,628	\$390,248			\$188,670	\$195,120	\$160,600	\$69,332	0.279
PO-04-26-252-004	582	BAY POINTE DR	R-L	Colonial/2Sty	B	-5	1999	3,085	\$512,902			\$232,510	\$256,450	\$210,580	\$97,575	0.361
PO-04-26-251-001	587	BAY POINTE DR	R-L1	Colonial/2Sty	B	-10	2001	3,563	\$524,564			\$253,110	\$262,280	\$219,580	\$74,688	0.304
PO-04-26-252-005	590	BAY POINTE DR	R-L	Colonial/2Sty	B	10	2000	3,399	\$636,259			\$287,430	\$318,130	\$301,800	\$102,880	0.413
PO-04-26-205-008	597	BAY POINTE DR	R-L1	Colonial/2Sty	BC	0	2013	2,565	\$424,242	\$405,000	12/14/2021	\$204,820	\$212,120	\$160,900	\$77,536	0.276
PO-04-26-252-006	598	BAY POINTE DR	R-L	Ranch	BC	0	2018	2,265	\$520,902			\$236,160	\$260,450	\$219,910	\$107,257	0.403
PO-04-26-205-007	603	BAY POINTE DR	R-L1	Colonial/2Sty	B	-10	2004	2,741	\$434,551			\$209,890	\$217,280	\$141,240	\$73,513	0.352
PO-04-26-252-007	606	BAY POINTE DR	R-L	SingleFamily	B	0	1999	3,471	\$671,386	\$575,000	6/7/2021	\$303,010	\$335,690	\$318,160	\$104,204	0.362
PO-04-26-204-055	611	BAY POINTE DR	R-L1	Colonial/2Sty	B	-10	2006	2,732	\$441,856	\$420,000	6/9/2022	\$213,190	\$220,930	\$220,930	\$66,518	0.331
PO-04-26-252-008	614	BAY POINTE DR	R-L	Colonial/2Sty	B	10	2003	3,840	\$738,591			\$331,930	\$369,300	\$348,520	\$91,943	0.318
PO-04-26-204-056	619	BAY POINTE DR	R-L1	Colonial/2Sty	B	-10	2004	2,745	\$444,239			\$214,360	\$222,120	\$188,220	\$64,865	0.312
PO-04-26-252-009	622	BAY POINTE DR	R-L	Colonial/2Sty	B	0	1998	3,320	\$679,157			\$306,810	\$339,580	\$301,390	\$97,209	0.323
PO-04-26-204-057	627	BAY POINTE DR	R-L1	Colonial/2Sty	B	-10	2005	2,733	\$430,421			\$207,700	\$215,210	\$169,930	\$64,700	0.303
PO-04-26-252-010	630	BAY POINTE DR	R-L	Colonial/2Sty	B	-5	1998	3,057	\$550,245			\$248,860	\$275,120	\$211,100	\$92,137	0.279
PO-04-26-204-058	635	BAY POINTE DR	R-L1	SingleFamily	B	-10	2005	3,021	\$471,594			\$227,460	\$235,800	\$158,790	\$65,683	0.346
PO-04-26-252-011	638	BAY POINTE DR	R-L	Colonial/2Sty	B	10	1999	3,107	\$564,541			\$254,200	\$282,270	\$252,650	\$76,566	0.229
PO-04-26-204-059	643	BAY POINTE DR	R-L1	Contemporary	B	-10	2004	2,913	\$449,065			\$216,680	\$224,530	\$166,220	\$65,582	0.322
PO-04-26-203-005	646	BAY POINTE DR	R-L	Colonial/2Sty	B	0	2016	3,435	\$686,809			\$309,330	\$343,400	\$310,950	\$101,161	0.28
PO-04-26-204-063	651	BAY POINTE DR	R-L1	Colonial/2Sty	B	-10	2015	2,653	\$492,098	\$475,000	8/8/2023	\$237,560	\$246,050	\$246,050	\$90,723	0.22
PO-04-26-203-006	654	BAY POINTE DR	R-L	Colonial/2Sty	B	10	2022	4,323	\$1,017,764			\$255,910	\$508,880	\$508,880	\$103,814	0.297

PO-04-26-204-062	659	BAY POINTE DR	R-L1	Colonial/2Sty	B	-10	2015	2,543	\$471,636	\$410,000	9/9/2022	\$227,510	\$235,820	\$235,820	\$79,597	0.18
PO-04-26-203-007	662	BAY POINTE DR	R-L	Colonial/2Sty	B	10	2020	3,520	\$503,822			\$201,230	\$251,910	\$251,910	\$102,080	0.312
PO-04-26-204-061	667	BAY POINTE DR	R-L1	Colonial/2Sty	B	-10	2015	2,573	\$467,870			\$225,730	\$233,940	\$191,460	\$79,597	0.18
PO-04-26-203-008	670	BAY POINTE DR	R-L	Colonial/2Sty	B	0	2017	3,404	\$710,687			\$319,840	\$355,340	\$335,830	\$105,617	0.381
PO-04-26-204-060	675	BAY POINTE DR	R-L1	Colonial/2Sty	B	-10	2004	2,807	\$412,392			\$199,050	\$206,200	\$155,410	\$62,849	0.304
PO-04-26-203-009	678	BAY POINTE DR	R-L	Tudor	B	0	2005	4,340	\$937,498	\$947,500	6/16/2021	\$429,090	\$468,750	\$440,460	\$109,952	0.49
PO-04-26-204-042	683	BAY POINTE DR	R-L1	Colonial/2Sty	BC	-10	2006	2,782	\$353,803	\$370,000	5/12/2021	\$164,160	\$176,900	\$156,840	\$37,429	0.191
PO-04-26-203-010	686	BAY POINTE DR	R-L		D	0	0	0	\$100,094	\$200,000	9/8/2022	\$50,050	\$50,050	\$50,050	\$100,094	0.344
PO-04-26-204-041	691	BAY POINTE DR	R-L1	Colonial/2Sty	B	-10	2004	2,752	\$426,894			\$206,310	\$213,450	\$135,210	\$77,398	0.224
PO-04-26-203-011	694	BAY POINTE DR	R-L		D	0	0	0	\$79,774			\$39,890	\$39,890	\$7,360	\$79,774	0.224
PO-04-26-204-040	699	BAY POINTE DR	R-L1	Colonial/2Sty	B	-10	2006	2,745	\$411,374			\$191,940	\$205,690	\$166,300	\$35,924	0.212
PO-04-26-203-012	702	BAY POINTE DR	R-L		D	0	0	0	\$98,634	\$200,000	9/1/2021	\$49,320	\$49,320	\$45,300	\$98,634	0.266
PO-04-26-204-039	707	BAY POINTE DR	R-L1	Colonial/2Sty	B	-10	2005	2,728	\$408,876			\$190,390	\$204,440	\$182,100	\$38,540	0.305
PO-04-26-203-013	710	BAY POINTE DR	R-L	Ranch	BC	0	2018	2,489	\$524,996			\$236,670	\$262,500	\$248,500	\$85,170	0.228
PO-04-26-204-053	715	BAY POINTE DR	R-L1	Colonial/2Sty	B	-10	2005	2,725	\$482,816			\$233,580	\$241,410	\$202,730	\$102,052	0.4
PO-04-26-203-014	718	BAY POINTE DR	R-L	Colonial/2Sty	BC	0	2015	2,735	\$516,327			\$233,240	\$258,160	\$228,870	\$89,015	0.239
PO-04-26-204-052	723	BAY POINTE DR	R-L1	Contemporary	B	-10	2004	2,749	\$443,586			\$214,200	\$221,790	\$146,590	\$73,149	0.358
PO-04-26-203-015	726	BAY POINTE DR	R-L	Ranch	BC	0	2013	2,350	\$508,563			\$230,460	\$254,280	\$239,740	\$101,048	0.28
PO-04-26-204-051	731	BAY POINTE DR	R-L1	Colonial/2Sty	B	-10	2004	2,811	\$426,267			\$205,700	\$213,130	\$143,370	\$63,059	0.484
PO-04-26-203-016	734	BAY POINTE DR	R-L	Colonial/2Sty	BC	0	2022	3,490	\$717,641			\$324,660	\$358,820	\$334,250	\$100,875	0.272
PO-04-26-204-035	739	BAY POINTE DR	R-L1	Colonial/2Sty	B	-10	2005	2,702	\$431,537	\$439,900	10/28/2021	\$201,870	\$215,770	\$193,680	\$34,734	0.368
PO-04-26-203-017	742	BAY POINTE DR	R-L		D	0	0	0	\$85,547			\$42,770	\$42,770	\$7,610	\$85,547	0.235
PO-04-26-204-034	747	BAY POINTE DR	R-L1	Colonial/2Sty	B	-5	2003	2,732	\$420,039			\$196,150	\$210,020	\$167,380	\$36,207	0.282
PO-04-26-203-018	750	BAY POINTE DR	R-L	Ranch	BC	0	2014	2,418	\$520,017			\$235,690	\$260,010	\$226,460	\$101,132	0.292
PO-04-26-204-050	755	BAY POINTE DR	R-L1	SingleFamily	B	-10	2005	2,675	\$449,170			\$216,790	\$224,590	\$143,250	\$70,411	0.284
PO-04-26-203-019	758	BAY POINTE DR	R-L		D	0	0	0	\$119,365			\$59,680	\$59,680	\$52,370	\$119,365	0.356
PO-04-26-204-049	763	BAY POINTE DR	R-L1	Colonial/2Sty	B	-10	2004	2,815	\$430,199			\$207,800	\$215,100	\$147,320	\$72,981	0.265
PO-04-26-203-020	766	BAY POINTE DR	R-L		D	0	0	0	\$106,133			\$53,070	\$53,070	\$9,070	\$106,133	0.299
PO-04-26-204-048	771	BAY POINTE DR	R-L1	Colonial/2Sty	B	-10	2005	2,681	\$394,499	\$452,000	11/22/2021	\$183,980	\$197,250	\$175,950	\$35,393	0.219
PO-04-26-203-021	774	BAY POINTE DR	R-L		D	0	0	0	\$99,817			\$49,910	\$49,910	\$9,070	\$99,817	0.307
PO-04-26-204-047	779	BAY POINTE DR	R-L1	Colonial/2Sty	B	0	2016	2,661	\$476,205			\$222,560	\$238,100	\$212,600	\$37,266	0.226
PO-04-26-203-022	782	BAY POINTE DR	R-L		D	0	0	0	\$106,753			\$53,380	\$53,380	\$9,070	\$106,753	0.298
PO-04-26-204-046	787	BAY POINTE DR	R-L1	Colonial/2Sty	B	-10	2004	2,807	\$405,960			\$189,250	\$202,980	\$142,360	\$37,027	0.254
PO-04-26-203-023	790	BAY POINTE DR	R-L		D	0	0	0	\$107,981			\$53,990	\$53,990	\$8,610	\$107,981	0.285
PO-04-26-204-045	795	BAY POINTE DR	R-L1	Colonial/2Sty	B	0	2016	2,586	\$459,248			\$214,560	\$229,620	\$204,890	\$36,609	0.285
PO-04-26-203-024	798	BAY POINTE DR	R-L		D	0	0	0	\$100,993			\$50,500	\$50,500	\$8,210	\$100,993	0.259
PO-04-26-204-044	803	BAY POINTE DR	R-L1	SingleFamily	B	-10	2005	2,769	\$401,911			\$187,370	\$200,960	\$148,800	\$36,566	0.31
PO-04-26-203-025	806	BAY POINTE DR	R-L		D	0	0	0	\$96,268			\$48,130	\$48,130	\$8,210	\$96,268	0.261
PO-04-26-204-043	811	BAY POINTE DR	R-L1	Colonial/2Sty	B	0	2016	2,576	\$463,325			\$216,350	\$231,660	\$181,310	\$37,662	0.31
PO-04-26-203-026	814	BAY POINTE DR	R-L		D	0	0	0	\$95,003			\$47,500	\$47,500	\$8,420	\$95,003	0.265
PO-04-26-204-025	819	BAY POINTE DR	R-L1	SingleFamily	B	-10	2006	2,791	\$411,849			\$192,060	\$205,920	\$141,620	\$36,750	0.316
PO-04-26-203-027	822	BAY POINTE DR	R-L		D	0	0	0	\$89,933			\$44,970	\$44,970	\$8,610	\$89,933	0.279
PO-04-26-203-028	830	BAY POINTE DR	R-L		D	0	0	0	\$101,184			\$50,590	\$50,590	\$9,200	\$101,184	0.306
PO-04-26-203-029	838	BAY POINTE DR	R-L		D	0	0	0	\$99,037			\$49,520	\$49,520	\$8,850	\$99,037	0.283

PO-04-26-203-030	846	BAY POINTE DR	R-L		D	0	0	0	\$103,776			\$51,890	\$51,890	\$9,070	\$103,776	0.299
PO-04-26-201-004	851	BAY POINTE DR	R-L1	Colonial/2Sty	B	0	2000	3,597	\$522,508	\$432,000	5/4/2021	\$243,730	\$261,250	\$233,100	\$47,400	0.445
PO-04-26-203-031	854	BAY POINTE DR	R-L		D	0	0	0	\$97,604			\$48,800	\$48,800	\$8,210	\$97,604	0.257
PO-04-23-451-006	859	BAY POINTE DR	R-L1		D	0	0	0	\$35,624			\$11,860	\$17,810	\$1,070	\$35,624	0.401
PO-04-26-203-032	862	BAY POINTE DR	R-L		D	0	0	0	\$103,728			\$51,860	\$51,860	\$9,070	\$103,728	0.297
PO-04-23-451-005	867	BAY POINTE DR	R-L1	SingleFamily	B	0	2000	3,367	\$503,938			\$236,110	\$251,970	\$180,910	\$38,599	0.353
PO-04-26-203-033	870	BAY POINTE DR	R-L		D	0	0	0	\$95,227			\$47,610	\$47,610	\$7,610	\$95,227	0.231
PO-04-23-451-004	875	BAY POINTE DR	R-L1		D	0	0	0	\$36,151			\$12,040	\$18,080	\$1,070	\$36,151	0.241
PO-04-26-203-034	878	BAY POINTE DR	R-L		D	0	0	0	\$95,033			\$47,520	\$47,520	\$8,210	\$95,033	0.259
PO-04-23-451-003	883	BAY POINTE DR	R-L1		D	0	0	0	\$34,768			\$11,580	\$17,380	\$1,070	\$34,768	0.216
PO-04-26-203-001	886	BAY POINTE DR	R-L		D	0	0	0	\$101,847			\$50,920	\$50,920	\$1,080	\$101,847	0.305
PO-04-23-451-002	891	BAY POINTE DR	R-L1		D	0	0	0	\$34,523			\$11,490	\$17,260	\$1,070	\$34,523	0.27
PO-04-26-203-004	894	BAY POINTE DR	R-L		D	0	0	0	\$102,673			\$51,340	\$51,340	\$1,850	\$102,673	0.357
PO-04-23-452-009	910	BAY POINTE DR	R-L		D	0	0	0	\$97,767			\$48,880	\$48,880	\$1,480	\$97,767	0.299
PO-04-23-452-008	918	BAY POINTE DR	R-L	SingleFamily	B	10	2000	3,508	\$781,062			\$351,160	\$390,530	\$267,720	\$95,197	0.397
PO-04-23-452-007	926	BAY POINTE DR	R-L	Colonial/2Sty	B	10	2001	4,073	\$738,703			\$331,940	\$369,350	\$254,770	\$84,844	0.436
PO-04-23-452-004	934	BAY POINTE DR	R-L		D	0	0	0	\$75,225			\$37,610	\$37,610	\$1,080	\$75,225	0.569
PO-04-27-230-023	18	BROADWAY ST	REX	Colonial/2Sty	C	0	1900	2,242	\$291,668			\$140,970	\$145,830	\$134,750	\$50,000	0.343
PO-04-27-229-019	21	BROADWAY ST	REX	SingleFamily	CD	0	1900	1,268	\$176,135			\$85,060	\$88,070	\$68,740	\$37,900	0.18
PO-04-27-230-009	22	BROADWAY ST	REX	Colonial/2Sty	C	-5	1900	1,676	\$251,661			\$123,490	\$125,830	\$98,520	\$50,000	0.33
PO-04-27-229-030	23	BROADWAY ST	REX	Bungalow	C	-5	1928	1,410	\$178,459			\$89,140	\$89,230	\$42,190	\$37,900	0.162
PO-04-27-230-010	26	BROADWAY ST	REX	SingleFamily	C	-5	1880	1,472	\$201,099	\$168,000	8/9/2023	\$97,630	\$100,550	\$100,550	\$50,000	0.35
PO-04-27-229-022	31	BROADWAY ST	REX	SingleFamily	C	-5	1940	1,754	\$226,050			\$107,480	\$113,030	\$59,510	\$37,900	0.15
PO-04-27-230-011	38	BROADWAY ST	REX	Bungalow	CD	0	1953	1,115	\$193,688			\$94,970	\$96,840	\$55,810	\$37,900	0.18
PO-04-27-229-023	39	BROADWAY ST	RDX	MultiTenant	C	-5	1900	2,051	\$276,265			\$133,430	\$138,130	\$102,820	\$37,900	0.194
PO-04-27-231-001	42	BROADWAY ST	REX	SingleFamily	CD	0	1950	1,244	\$196,500			\$99,700	\$98,250	\$98,250	\$37,900	0.23
PO-04-27-231-006	46	BROADWAY ST	REX	Ranch	C	0	1995	1,267	\$297,985	\$267,500	9/26/2022	\$150,820	\$148,990	\$148,990	\$37,900	0.27
PO-04-27-232-001	50	BROADWAY ST	REX	SingleFamily	CD	0	1920	1,578	\$200,237			\$97,220	\$100,120	\$49,310	\$50,000	0.35
PO-04-27-232-002	52	BROADWAY ST	REX	SingleFamily	C	0	1923	1,780	\$210,955			\$100,680	\$105,480	\$75,990	\$37,900	0.16
PO-04-27-232-003	56	BROADWAY ST	REX	Bungalow	CD	0	1925	1,075	\$147,866			\$65,740	\$73,930	\$45,640	\$37,900	0.11
PO-04-27-228-012	57	BROADWAY ST	REX	Ranch	D	0	1920	760	\$125,919			\$62,820	\$62,960	\$34,810	\$50,000	0.4
PO-04-26-101-017	143	BROADWAY ST	REX	Colonial/2Sty	C	0	1995	1,479	\$338,551			\$170,550	\$169,280	\$93,760	\$37,900	0.27
PO-04-26-101-008	177	BROADWAY ST	REX	Ranch	CD	0	1910	1,715	\$231,004			\$113,530	\$115,500	\$54,790	\$58,500	0.66
PO-04-27-201-008	10	BURDICK ST	RVX	SingleFamily	C	0	1928	1,690	\$244,705			\$110,570	\$122,350	\$81,810	\$35,910	0.288
PO-04-27-201-007	14	BURDICK ST	RVX	SingleFamily	CD	0	1920	2,058	\$251,100			\$111,790	\$125,550	\$86,380	\$35,910	0.261
PO-04-27-201-032	18	BURDICK ST	CME		D	0	0	0	\$0			\$0	\$0	\$0	\$0	0.74
PO-04-22-453-013	19	BURDICK ST	CME		D	0	0	0	\$0			\$0	\$0	\$0	\$0	0.429
PO-04-22-460-032	21	BURDICK ST	CME		D	0	0	0	\$0			\$0	\$0	\$0	\$0	1
PO-04-27-202-037	22	BURDICK ST	CME		D	0	0	0	\$0			\$0	\$0	\$0	\$0	1.13
PO-04-27-201-031	22	BURDICK ST	CME		D	0	0	0	\$0			\$0	\$0	\$0	\$0	0.95
PO-04-22-453-009	25	BURDICK ST	RVX	SingleFamily	C	10	1920	2,640	\$343,320			\$159,090	\$171,660	\$167,040	\$35,910	0.225
PO-04-22-453-039	27	BURDICK ST	RVX	Other	B	10	1895	4,962	\$869,111			\$402,840	\$434,560	\$201,470	\$59,325	0.563
PO-04-27-201-004	28	BURDICK ST	RVX	Colonial/2Sty	C	10	1907	2,436	\$375,079			\$175,020	\$187,540	\$177,280	\$46,305	0.413
PO-04-27-201-003	30	BURDICK ST	RVX	Colonial/2Sty	C	5	1900	2,347	\$313,688			\$143,420	\$156,840	\$73,900	\$46,305	0.377

PO-04-22-453-006	31	BURDICK ST	RVX	Colonial/2Sty	C	0	1880	1,877	\$290,755			\$131,880	\$145,380	\$136,550	\$59,325	0.966
PO-04-22-460-035	33	BURDICK ST	CME		D	0	0	0	\$0			\$0	\$0	\$0	\$0	1
PO-04-27-201-029	34	BURDICK ST	RDX	Colonial/2Sty	C	5	1900	3,028	\$333,295			\$156,420	\$166,650	\$145,000	\$35,910	0.231
PO-04-27-227-016	36	BURDICK ST	REX		D	0	0	0	\$19,500			\$12,930	\$9,750	\$8,440	\$19,500	0.075
PO-04-27-227-014	38	BURDICK ST	REX		D	0	0	0	\$37,900			\$23,160	\$18,950	\$15,120	\$37,900	0.134
PO-04-27-126-015	40	BURDICK ST	RVX	Bungalow	C	0	1927	1,634	\$226,895			\$98,060	\$113,450	\$52,580	\$35,910	0.134
PO-04-27-227-003	42	BURDICK ST	REX		D	0	0	0	\$37,900			\$36,030	\$18,950	\$18,950	\$37,900	0.26
PO-04-27-227-004	46	BURDICK ST	REX		D	0	0	0	\$37,900			\$26,480	\$18,950	\$9,790	\$37,900	0.16
PO-04-27-126-014	46	BURDICK ST	RVX	Bungalow	C	0	1929	2,379	\$334,625			\$0	\$167,310	\$82,420	\$46,305	0.314
PO-04-22-385-016	47	BURDICK ST	RVX	Ranch	C	5	1949	1,753	\$257,693			\$118,260	\$128,850	\$73,110	\$35,910	0.155
PO-04-27-227-005	48	BURDICK ST	REX	Colonial/2Sty	C	0	1900	1,794	\$203,357			\$102,980	\$101,680	\$51,070	\$37,900	0.17
PO-04-27-126-013	48	BURDICK ST	RVX	Colonial/2Sty	C	0	1900	1,840	\$287,205			\$131,960	\$143,600	\$128,210	\$46,305	0.361
PO-04-22-385-015	49	BURDICK ST	RVX	SingleFamily	CD	0	1872	2,011	\$205,122			\$94,570	\$102,560	\$97,840	\$35,910	0.181
PO-04-22-481-008	49	BURDICK ST	REX	SingleFamily	C	-5	1888	2,410	\$292,840			\$144,700	\$146,420	\$72,190	\$50,000	0.44
PO-04-27-126-012	50	BURDICK ST	RVX	Colonial/2Sty	C	0	1904	2,254	\$285,490			\$130,430	\$142,750	\$119,490	\$46,305	0.347
PO-04-22-385-014	51	BURDICK ST	RVX	Colonial/2Sty	CD	0	1940	1,845	\$277,368			\$130,400	\$138,680	\$106,080	\$35,910	0.241
PO-04-27-227-011	52	BURDICK ST	CME		D	0	0	0	\$0			\$0	\$0	\$0	\$0	1.13
PO-04-27-126-011	52	BURDICK ST	RVX	Colonial/2Sty	C	0	1900	2,548	\$312,486			\$142,370	\$156,240	\$75,890	\$46,305	0.478
PO-04-22-385-013	55	BURDICK ST	RVX	SingleFamily	C	0	1900	1,585	\$243,081			\$112,280	\$121,540	\$95,550	\$35,910	0.243
PO-04-22-482-025	55	BURDICK ST	REX	Other	C	-5	1920	2,027	\$290,534			\$143,080	\$145,270	\$145,270	\$58,500	0.94
PO-04-27-126-010	56	BURDICK ST	RVX	Colonial/2Sty	C	-5	1900	1,568	\$214,727			\$95,260	\$107,360	\$77,240	\$59,325	0.686
PO-04-22-385-012	57	BURDICK ST	RVX	SingleFamily	C	0	1900	1,535	\$252,141			\$116,320	\$126,070	\$63,010	\$35,910	0.244
PO-04-27-126-009	58	BURDICK ST	RVX	Other	C	-5	1900	1,589	\$227,346			\$102,970	\$113,670	\$53,250	\$35,910	0.202
PO-04-22-385-011	59	BURDICK ST	RVX	SingleFamily	C	0	1920	1,516	\$209,543			\$97,140	\$104,770	\$52,730	\$35,910	0.244
PO-04-22-482-026	59	BURDICK ST	RDX	MultiTenant	C	-5	1920	2,707	\$253,108			\$122,020	\$126,550	\$66,070	\$50,000	0.44
PO-04-27-126-008	60	BURDICK ST	RVX	SingleFamily	C	0	1900	1,134	\$186,853			\$82,860	\$93,430	\$44,390	\$35,910	0.157
PO-04-22-385-010	61	BURDICK ST	RVX	SingleFamily	C	0	1920	1,300	\$212,947			\$97,310	\$106,470	\$52,320	\$35,910	0.223
PO-04-27-126-043	62	BURDICK ST	RVX	Colonial/2Sty	C	0	1900	1,643	\$297,879			\$134,940	\$148,940	\$141,680	\$35,910	0.189
PO-04-27-228-002	62	BURDICK ST	REX	Other	C	0	1930	3,448	\$328,621			\$163,560	\$164,310	\$89,330	\$37,900	0.26
PO-04-22-482-036	63	BURDICK ST	REX	Other	C	-5	1900	1,659	\$223,824			\$104,140	\$111,910	\$58,570	\$50,000	0.339
PO-04-27-228-003	66	BURDICK ST	REX	Colonial/2Sty	C	0	1930	1,512	\$252,997			\$124,630	\$126,500	\$85,940	\$50,000	0.37
PO-04-22-385-020	67	BURDICK ST	RVX	CapeCod	C	-5	1885	1,262	\$237,525	\$280,000	8/28/2023	\$108,330	\$118,760	\$118,760	\$59,325	0.815
PO-04-22-482-028	67	BURDICK ST	REX	Other	C	-5	1888	2,141	\$275,395			\$134,980	\$137,700	\$99,440	\$50,000	0.44
PO-04-27-228-004	68	BURDICK ST	REX	Colonial/2Sty	C	0	1930	1,424	\$224,726			\$109,310	\$112,360	\$58,820	\$50,000	0.38
PO-04-22-482-029	69	BURDICK ST	REX	Colonial/2Sty	C	0	1900	1,292	\$213,933			\$99,820	\$106,970	\$76,890	\$58,500	0.69
PO-04-27-228-005	70	BURDICK ST	REX	Colonial/2Sty	C	0	1900	1,696	\$233,158			\$113,400	\$116,580	\$57,280	\$50,000	0.38
PO-04-22-482-030	73	BURDICK ST	REX	SingleFamily	C	-5	1875	1,772	\$242,469	\$275,000	6/29/2023	\$122,400	\$121,230	\$121,230	\$50,000	0.46
PO-04-22-385-003	75	BURDICK ST	RVX	Ranch	C	5	1953	1,657	\$333,633			\$150,410	\$166,820	\$83,880	\$59,325	0.514
PO-04-27-228-006	76	BURDICK ST	REX	Colonial/2Sty	C	-5	1934	1,245	\$196,673			\$97,310	\$98,340	\$95,210	\$37,900	0.19
PO-04-22-482-033	77	BURDICK ST	REX	Other	C	-5	1888	2,156	\$276,273			\$134,670	\$138,140	\$64,330	\$50,000	0.36
PO-04-22-351-003	99	BURDICK ST	CME		D	0	0	0	\$162,189			\$0	\$0	\$0	\$162,189	10.386
PO-04-27-126-057	20	BURDICK WOODS CT	KBW	Other	B	-10	2001	2,118	\$319,631	\$358,000	8/14/2023	\$149,040	\$159,820	\$159,820	\$25,410	1
PO-04-27-126-052	35	BURDICK WOODS CT	KBW	Other	B	-10	1998	2,171	\$314,424			\$146,680	\$157,210	\$97,330	\$25,410	1
PO-04-27-126-058	40	BURDICK WOODS CT	KBW	Other	B	-10	2001	2,442	\$348,415			\$162,390	\$174,210	\$128,140	\$25,410	1

PO-04-27-126-051	55	BURDICK WOODS CT	KBW	Other	B	-10	1998	2,711	\$415,150	\$372,900	8/31/2021	\$193,400	\$207,580	\$175,560	\$25,410	1
PO-04-27-126-059	60	BURDICK WOODS CT	KBW	Other	B	-10	2001	2,176	\$323,195			\$150,690	\$161,600	\$98,640	\$25,410	1
PO-04-27-126-050	75	BURDICK WOODS CT	KBW	Other	B	-10	1998	1,772	\$303,056	\$352,500	5/10/2021	\$141,420	\$151,530	\$129,080	\$25,410	1
PO-04-22-456-004	5	CENTER ST	REX	Ranch	CD	0	1900	841	\$110,038			\$47,610	\$55,020	\$25,620	\$37,900	0.11
PO-04-22-457-002	8	CENTER ST	REX	Bungalow	CD	0	1920	1,602	\$184,053			\$84,040	\$92,030	\$40,690	\$37,900	0.12
PO-04-22-457-003	10	CENTER ST	REX	Bungalow	CD	0	1920	1,413	\$178,458			\$87,160	\$89,230	\$37,280	\$37,900	0.19
PO-04-22-456-005	11	CENTER ST	REX	Other	CD	0	1900	2,730	\$306,782			\$149,720	\$153,390	\$124,510	\$37,900	0.16
PO-04-22-457-004	14	CENTER ST	REX	Bungalow	CD	0	1888	1,172	\$139,500			\$70,340	\$69,750	\$37,650	\$37,900	0.23
PO-04-22-456-006	15	CENTER ST	REX	SingleFamily	C	0	1900	1,626	\$191,187	\$175,000	12/2/2022	\$89,910	\$95,590	\$94,400	\$37,900	0.14
PO-04-22-457-005	16	CENTER ST	REX	Bungalow	CD	0	1920	1,317	\$187,225	\$195,000	8/17/2022	\$95,340	\$93,610	\$93,610	\$37,900	0.24
PO-04-22-456-007	17	CENTER ST	REX	BiLevel	C	-5	1989	1,298	\$194,820			\$96,270	\$97,410	\$53,880	\$19,500	0.09
PO-04-22-457-006	20	CENTER ST	RDX	TwnHse/Duplex	C	0	2005	2,148	\$274,676			\$134,810	\$137,340	\$74,660	\$37,900	0.24
PO-04-22-456-008	21	CENTER ST	REX	Bungalow	CD	0	1920	1,425	\$176,639			\$83,070	\$88,320	\$79,050	\$37,900	0.13
PO-04-22-457-007	26	CENTER ST	REX	Ranch	CD	0	1888	875	\$150,519			\$74,780	\$75,260	\$64,210	\$37,900	0.22
PO-04-22-352-007	10	CHARI CT	RVX	Ranch	C	-5	1968	1,100	\$274,507			\$123,770	\$137,250	\$75,540	\$59,325	0.589
PO-04-22-352-006	20	CHARI CT	RVX	Ranch	C	-5	1968	1,506	\$333,719	\$319,000	10/25/2022	\$152,570	\$166,860	\$160,190	\$59,325	0.62
PO-04-27-130-001	100	CONDA LN	KWB	Other	C	10	1983	1,286	\$212,815			\$102,140	\$106,410	\$78,200	\$25,410	1
PO-04-27-130-002	102	CONDA LN	KWB	Other	C	10	1983	1,286	\$188,347	\$225,000	7/25/2023	\$90,540	\$94,170	\$94,170	\$25,410	1
PO-04-27-130-003	104	CONDA LN	KWB	Other	C	10	1983	1,286	\$187,781			\$90,270	\$93,890	\$87,490	\$25,410	1
PO-04-27-130-004	106	CONDA LN	KWB	Other	C	10	1983	1,286	\$188,677	\$210,000	8/9/2022	\$90,700	\$94,340	\$94,340	\$25,410	1
PO-04-27-130-005	108	CONDA LN	KWB	Other	C	10	1983	1,286	\$193,137			\$0	\$96,570	\$49,190	\$25,410	1
PO-04-27-130-006	110	CONDA LN	KWB	Other	C	10	1983	1,286	\$212,608			\$102,130	\$106,300	\$88,220	\$25,410	1
PO-04-27-130-007	112	CONDA LN	KWB	Other	C	10	1983	1,286	\$193,793			\$93,140	\$96,900	\$90,370	\$25,410	1
PO-04-27-130-008	114	CONDA LN	KWB	Other	C	10	1983	1,035	\$175,892			\$84,600	\$87,950	\$84,920	\$25,410	1
PO-04-27-130-009	120	CONDA LN	KWB	Colonial/2Sty	C	10	1983	1,286	\$205,529	\$202,500	6/14/2022	\$98,750	\$102,760	\$102,760	\$25,410	1
PO-04-27-130-010	122	CONDA LN	KWB	Other	C	10	1983	1,286	\$206,034			\$98,990	\$103,020	\$59,710	\$25,410	1
PO-04-27-130-011	124	CONDA LN	KWB	Other	C	10	1983	1,286	\$206,034			\$98,990	\$103,020	\$57,660	\$25,410	1
PO-04-27-130-012	126	CONDA LN	KWB	Other	C	10	1983	1,286	\$208,263			\$100,060	\$104,130	\$77,190	\$25,410	1
PO-04-27-130-013	128	CONDA LN	KWB	Other	C	10	1983	1,301	\$191,205			\$91,910	\$95,600	\$54,270	\$25,410	1
PO-04-27-130-014	130	CONDA LN	KWB	Other	C	10	1983	1,286	\$189,609	\$230,000	6/7/2023	\$91,140	\$94,800	\$94,800	\$25,410	1
PO-04-27-130-015	132	CONDA LN	KWB	Other	C	10	1983	1,286	\$201,772	\$192,000	12/9/2021	\$96,960	\$100,890	\$97,100	\$25,410	1
PO-04-27-130-016	134	CONDA LN	KWB	Other	C	10	1983	1,286	\$205,806			\$98,880	\$102,900	\$66,530	\$25,410	1
PO-04-27-130-017	136	CONDA LN	KWB	TwnHse/Duplex	C	10	1983	1,286	\$189,980			\$91,320	\$94,990	\$78,680	\$25,410	1
PO-04-27-130-018	138	CONDA LN	KWB	Other	C	10	1983	1,286	\$212,171			\$101,920	\$106,090	\$78,750	\$25,410	1
PO-04-22-482-035	25	COTTAGE CT	REX	Colonial/2Sty	C	0	1923	1,590	\$269,372			\$141,250	\$134,690	\$115,150	\$37,900	0.239
PO-04-22-482-012	28	COTTAGE CT	REX	Ranch	CD	0	1957	955	\$173,734			\$88,710	\$86,870	\$50,100	\$37,900	0.26
PO-04-22-482-013	29	COTTAGE CT	REX	Ranch	CD	0	1941	981	\$151,458			\$72,010	\$75,730	\$41,370	\$37,900	0.17
PO-04-22-482-011	32	COTTAGE CT	REX	Ranch	C	-5	1940	1,019	\$179,575	\$180,000	6/9/2023	\$88,410	\$89,790	\$89,790	\$37,900	0.21
PO-04-22-482-014	33	COTTAGE CT	REX	Ranch	CD	0	1940	671	\$142,990			\$62,260	\$71,500	\$36,890	\$37,900	0.1
PO-04-22-482-015	35	COTTAGE CT	REX	Ranch	C	-5	1946	791	\$183,942			\$83,370	\$91,970	\$65,540	\$37,900	0.1
PO-04-22-482-010	36	COTTAGE CT	REX	Ranch	CD	0	1940	761	\$122,756			\$52,450	\$61,380	\$28,770	\$37,900	0.1
PO-04-22-482-016	37	COTTAGE CT	REX	Ranch	CD	0	1940	699	\$155,142	\$187,000	2/25/2022	\$69,240	\$77,570	\$72,700	\$37,900	0.1
PO-04-27-276-030	3	CRAWFORD ST	RVX	Colonial/2Sty	C	-5	1890	1,368	\$202,032			\$94,480	\$101,020	\$88,980	\$35,910	0.156
PO-04-27-277-007	4	CRAWFORD ST	RVX	Ranch	C	-5	1950	1,181	\$216,319			\$99,590	\$108,160	\$63,610	\$46,305	0.314

PO-04-27-276-029	5	CRAWFORD ST	RVX	Bungalow	C	-5	1916	1,084	\$197,064			\$90,400	\$98,530	\$49,260	\$35,910	0.222
PO-04-27-277-006	6	CRAWFORD ST	RVX	Ranch	C	-5	1950	951	\$222,474			\$101,880	\$111,240	\$81,700	\$46,305	0.306
PO-04-27-276-028	7	CRAWFORD ST	RVX	Bungalow	C	-5	1930	1,394	\$220,349			\$98,750	\$110,170	\$55,870	\$35,910	0.189
PO-04-27-277-005	8	CRAWFORD ST	RVX	Bungalow	C	0	1925	1,508	\$231,436			\$108,870	\$115,720	\$61,300	\$35,910	0.297
PO-04-27-276-027	9	CRAWFORD ST	RVX	Bungalow	C	-5	1930	1,118	\$161,893			\$72,750	\$80,950	\$42,270	\$35,910	0.198
PO-04-27-277-004	10	CRAWFORD ST	RVX	Bungalow	C	0	1930	1,838	\$273,047			\$128,650	\$136,520	\$135,080	\$35,910	0.288
PO-04-27-276-026	11	CRAWFORD ST	RVX	Bungalow	C	0	1926	1,396	\$226,687			\$102,250	\$113,340	\$55,570	\$35,910	0.206
PO-04-27-277-003	12	CRAWFORD ST	RVX	Bungalow	C	0	1930	1,836	\$250,861			\$116,020	\$125,430	\$66,480	\$35,910	0.279
PO-04-27-276-025	13	CRAWFORD ST	RVX	Ranch	C	-5	1930	883	\$146,359			\$66,200	\$73,180	\$38,580	\$35,910	0.212
PO-04-27-277-002	14	CRAWFORD ST	RVX	Ranch	C	-5	1951	1,241	\$215,826			\$101,630	\$107,910	\$106,710	\$35,910	0.27
PO-04-27-276-024	15	CRAWFORD ST	RVX	Bungalow	C	-5	1913	1,132	\$148,213			\$65,100	\$74,110	\$35,380	\$35,910	0.189
PO-04-27-254-008	25	CRAWFORD ST	RVX	Bungalow	CD	0	1940	1,108	\$181,292			\$81,480	\$90,650	\$49,580	\$46,305	0.3
PO-04-22-453-004	14	DAVISON ST	RDX	MultiTenant	C	-5	1920	2,802	\$309,994			\$145,800	\$155,000	\$88,860	\$46,305	0.329
PO-04-22-453-003	18	DAVISON ST	RVX	Other	CD	0	1930	1,947	\$238,263			\$108,050	\$119,130	\$113,450	\$46,305	0.326
PO-04-22-453-002	22	DAVISON ST	RVX	Other	CD	0	1900	966	\$149,498	\$170,000	10/31/2022	\$68,100	\$74,750	\$71,500	\$46,305	0.327
PO-04-22-453-001	28	DAVISON ST	RVX	SingleFamily	C	-5	1920	1,280	\$188,085			\$85,450	\$94,040	\$49,300	\$46,305	0.326
PO-04-22-386-002	32	DAVISON ST	RVX	Bungalow	CD	0	1920	936	\$173,273			\$79,830	\$86,640	\$47,220	\$46,305	0.347
PO-04-22-379-017	4	DAYTON ST	RVX	Ranch	CD	0	1906	731	\$125,780			\$56,570	\$62,890	\$35,840	\$35,910	0.169
PO-04-22-379-016	6	DAYTON ST	RVX	Ranch	C	-5	1950	1,053	\$199,501	\$249,317	6/10/2022	\$87,150	\$99,750	\$91,500	\$35,910	0.28
PO-04-22-382-003	12	DAYTON ST	RVX	SingleFamily	C	0	1907	1,760	\$268,519			\$117,980	\$134,260	\$69,410	\$59,325	0.556
PO-04-22-382-002	18	DAYTON ST	RVX	SingleFamily	CD	0	1910	1,693	\$220,138			\$98,640	\$110,070	\$51,980	\$46,305	0.333
PO-04-22-379-015	31	DAYTON ST	RVX	SingleFamily	C	0	1920	1,660	\$247,493			\$115,090	\$123,750	\$79,170	\$35,910	0.283
PO-04-22-378-016	47	DAYTON ST	RVX	Ranch	C	-5	1957	1,697	\$217,290			\$102,220	\$108,650	\$62,050	\$35,910	0.244
PO-04-22-378-010	63	DAYTON ST	RVX	SingleFamily	C	0	1967	1,624	\$304,085			\$140,980	\$152,040	\$83,100	\$35,910	0.252
PO-04-22-381-006	64	DAYTON ST	RVX	Ranch	C	-5	1971	960	\$195,491			\$89,010	\$97,750	\$53,270	\$46,305	0.305
PO-04-22-378-009	65	DAYTON ST	RVX	Ranch	C	-5	1965	1,370	\$251,619			\$116,310	\$125,810	\$122,120	\$35,910	0.235
PO-04-22-381-005	66	DAYTON ST	RVX	Ranch	C	-5	1971	1,048	\$249,934			\$117,880	\$124,970	\$70,900	\$35,910	0.281
PO-04-22-381-001	68	DAYTON ST	RVX	Colonial/2Sty	C	-5	1972	1,992	\$365,907			\$170,830	\$182,950	\$99,970	\$35,910	0.283
PO-04-22-353-007	78	DAYTON ST	RVX	Ranch	C	-5	1964	1,022	\$231,355			\$105,900	\$115,680	\$61,550	\$46,305	0.316
PO-04-22-353-006	80	DAYTON ST	RVX	Ranch	C	-5	1967	1,142	\$227,946			\$108,240	\$113,970	\$92,360	\$35,910	0.288
PO-04-22-352-015	81	DAYTON ST	RVX	Ranch	C	-5	1972	1,391	\$289,945			\$131,650	\$144,970	\$119,880	\$46,305	0.314
PO-04-22-353-005	82	DAYTON ST	RVX	Ranch	C	-5	1967	1,010	\$209,437			\$99,440	\$104,720	\$60,040	\$35,910	0.283
PO-04-22-352-014	83	DAYTON ST	RVX	Ranch	C	-5	1968	951	\$193,883			\$91,980	\$96,940	\$63,860	\$35,910	0.286
PO-04-22-353-004	84	DAYTON ST	RVX	Ranch	C	-5	1967	1,016	\$213,979			\$102,000	\$106,990	\$101,250	\$35,910	0.296
PO-04-22-352-013	85	DAYTON ST	RVX	Ranch	C	-5	1967	936	\$205,294			\$96,820	\$102,650	\$63,370	\$35,910	0.276
PO-04-22-353-003	86	DAYTON ST	RVX	Ranch	C	-5	1967	996	\$215,308			\$102,310	\$107,650	\$107,420	\$35,910	0.288
PO-04-22-352-012	87	DAYTON ST	RVX	Ranch	C	-5	1966	988	\$226,129			\$101,880	\$113,060	\$62,070	\$46,305	0.316
PO-04-22-353-020	88	DAYTON ST	RVX	Ranch	C	-5	1964	987	\$232,527			\$119,470	\$116,260	\$70,620	\$59,325	0.572
PO-04-27-204-004	12	DENNISON ST	RVX	Other	CD	0	1920	2,427	\$233,972			\$108,210	\$116,990	\$112,460	\$35,910	0.176
PO-04-27-204-003	14	DENNISON ST	RVX	Bungalow	C	0	1938	1,280	\$201,712			\$0	\$100,860	\$56,010	\$35,910	0.264
PO-04-27-204-002	16	DENNISON ST	RVX	Colonial/2Sty	C	0	1920	1,459	\$217,438			\$96,040	\$108,720	\$47,970	\$35,910	0.168
PO-04-27-204-001	20	DENNISON ST	RVX	SingleFamily	C	0	1890	1,789	\$234,213			\$107,440	\$117,110	\$53,810	\$35,910	0.224
PO-04-27-202-042	21	DENNISON ST	RVX	SingleFamily	C	0	1890	2,970	\$344,237			\$157,480	\$172,120	\$138,100	\$35,910	0.286
PO-04-27-202-009	25	DENNISON ST	RVX	Bungalow	C	-5	1890	2,116	\$250,939			\$112,250	\$125,470	\$95,520	\$35,910	0.214

PO-04-27-201-027	27	DENNISON ST	RVX	Colonial/2Sty	C	10	1850	2,346	\$346,219	\$347,500	2/13/2023	\$158,170	\$173,110	\$173,110	\$35,910	0.206
PO-04-27-201-026	31	DENNISON ST	RVX	SingleFamily	C	0	1900	1,564	\$229,106			\$105,600	\$114,550	\$55,870	\$35,910	0.237
PO-04-27-203-008	32	DENNISON ST	RVX	Bungalow	C	-5	1900	1,708	\$263,540			\$123,230	\$131,770	\$114,610	\$46,305	0.458
PO-04-27-203-007	36	DENNISON ST	RVX	Colonial/2Sty	C	0	1920	2,573	\$365,631			\$170,210	\$182,820	\$96,680	\$46,305	0.489
PO-04-27-201-025	37	DENNISON ST	RVX	SingleFamily	B	-10	1920	2,334	\$486,813			\$222,870	\$243,410	\$109,340	\$46,305	0.436
PO-04-27-203-006	40	DENNISON ST	RVX	Bungalow	C	-5	1903	1,904	\$236,585			\$114,330	\$118,290	\$61,130	\$46,305	0.475
PO-04-27-201-024	41	DENNISON ST	RVX	Colonial/2Sty	BC	0	1913	2,709	\$456,833			\$210,460	\$228,420	\$102,280	\$46,305	0.475
PO-04-27-203-005	44	DENNISON ST	RVX	Bungalow	C	0	1900	1,698	\$257,241			\$119,920	\$128,620	\$104,590	\$46,305	0.465
PO-04-27-201-023	45	DENNISON ST	RVX	SingleFamily	C	0	1903	2,322	\$337,835			\$156,200	\$168,920	\$77,110	\$46,305	0.42
PO-04-27-203-004	48	DENNISON ST	RVX	SingleFamily	BC	0	1895	3,167	\$451,117			\$208,590	\$225,560	\$179,560	\$46,305	0.425
PO-04-27-201-022	49	DENNISON ST	RVX	Colonial/2Sty	C	0	1870	1,427	\$250,150	\$325,000	12/27/2021	\$115,860	\$125,080	\$119,910	\$46,305	0.479
PO-04-27-203-003	52	DENNISON ST	RVX	SingleFamily	C	10	1913	2,054	\$290,277			\$128,590	\$145,140	\$134,740	\$35,910	0.158
PO-04-27-201-034	53	DENNISON ST	RVX	Colonial/2Sty	C	10	2001	2,335	\$448,053			\$204,970	\$224,030	\$130,280	\$46,305	0.354
PO-04-27-201-020	57	DENNISON ST	RVX	Colonial/2Sty	C	5	1940	1,764	\$272,382			\$120,640	\$136,190	\$74,700	\$35,910	0.244
PO-04-27-203-002	58	DENNISON ST	RVX	Colonial/2Sty	BC	0	1900	2,745	\$404,611			\$184,580	\$202,310	\$155,050	\$35,910	0.233
PO-04-27-126-039	61	DENNISON ST	RDX	MultiTenant	C	10	1870	2,654	\$280,302			\$131,380	\$140,150	\$104,920	\$46,305	0.362
PO-04-27-128-009	64	DENNISON ST	RVX	Colonial/2Sty	C	0	1905	2,193	\$287,154			\$131,770	\$143,580	\$80,230	\$46,305	0.442
PO-04-27-126-036	69	DENNISON ST	RVX	Ranch	CD	0	1923	1,492	\$212,222			\$97,780	\$106,110	\$91,510	\$46,305	0.366
PO-04-27-128-008	70	DENNISON ST	RVX	Bungalow	C	0	1900	1,658	\$235,854			\$108,830	\$117,930	\$63,780	\$46,305	0.462
PO-04-27-126-035	71	DENNISON ST	RVX	SingleFamily	C	0	1872	2,644	\$336,109			\$152,690	\$168,050	\$86,380	\$59,325	0.548
PO-04-27-128-007	72	DENNISON ST	RVX	Bungalow	C	-5	1920	1,178	\$199,507			\$91,180	\$99,750	\$88,430	\$46,305	0.325
PO-04-27-126-034	73	DENNISON ST	RVX	Bungalow	CD	0	1920	1,080	\$149,585			\$70,680	\$74,790	\$62,070	\$35,910	0.234
PO-04-27-128-006	74	DENNISON ST	RVX	SingleFamily	C	5	1900	1,693	\$279,273			\$128,930	\$139,640	\$81,490	\$46,305	0.333
PO-04-27-126-033	75	DENNISON ST	RVX	SingleFamily	C	5	1900	1,856	\$268,757			\$126,450	\$134,380	\$73,590	\$35,910	0.236
PO-04-27-128-005	78	DENNISON ST	RVX	SingleFamily	C	0	1900	1,612	\$254,381			\$116,430	\$127,190	\$62,600	\$46,305	0.39
PO-04-27-126-032	79	DENNISON ST	RVX	SingleFamily	C	0	1882	1,843	\$240,614			\$112,390	\$120,310	\$61,870	\$46,305	0.463
PO-04-27-128-004	82	DENNISON ST	RVX	SingleFamily	C	0	1900	1,902	\$256,805			\$119,850	\$128,400	\$97,290	\$46,305	0.478
PO-04-27-126-031	83	DENNISON ST	RVX	SingleFamily	C	5	1900	2,001	\$289,916	\$290,000	9/10/2021	\$134,800	\$144,960	\$139,990	\$46,305	0.471
PO-04-27-128-003	86	DENNISON ST	RVX	Colonial/2Sty	C	0	1900	2,564	\$303,429			\$140,390	\$151,710	\$119,760	\$46,305	0.338
PO-04-27-126-030	87	DENNISON ST	RVX	Bungalow	C	-5	1900	1,078	\$187,358			\$88,520	\$93,680	\$49,650	\$46,305	0.469
PO-04-27-128-029	90	DENNISON ST	RVX	SingleFamily	C	-5	1900	1,581	\$242,320			\$111,240	\$121,160	\$57,050	\$35,910	0.259
PO-04-27-126-029	91	DENNISON ST	RVX	Colonial/2Sty	C	-5	1860	1,966	\$265,535			\$124,260	\$132,770	\$67,640	\$46,305	0.47
PO-04-27-128-028	94	DENNISON ST	RVX	Colonial/2Sty	CD	0	1900	1,646	\$206,892			\$92,790	\$103,450	\$57,060	\$35,910	0.225
PO-04-27-126-048	95	DENNISON ST	RVX	Colonial/2Sty	C	5	1901	3,485	\$391,418			\$181,120	\$195,710	\$160,330	\$46,305	0.479
PO-04-27-126-047	97	DENNISON ST	RVX	SingleFamily	C	10	1996	1,452	\$356,319			\$163,890	\$178,160	\$172,080	\$46,305	0.31
PO-04-27-126-027	99	DENNISON ST	RVX	Other	C	10	1967	1,755	\$292,471			\$137,200	\$146,240	\$83,370	\$46,305	0.329
PO-04-27-127-006	100	DENNISON ST	RVX	Bungalow	C	-5	1949	1,692	\$269,497	\$295,000	10/6/2022	\$123,890	\$134,750	\$130,080	\$46,305	0.326
PO-04-27-127-005	102	DENNISON ST	RVX	Ranch	C	0	1949	1,371	\$273,796			\$126,370	\$136,900	\$90,450	\$46,305	0.358
PO-04-27-126-026	105	DENNISON ST	RVX	Ranch	C	-5	1950	1,596	\$266,587	\$230,000	2/18/2022	\$125,650	\$133,290	\$131,930	\$46,305	0.329
PO-04-27-127-004	106	DENNISON ST	RVX	Ranch	CD	0	1967	1,154	\$257,577	\$230,000	7/18/2022	\$116,380	\$128,790	\$122,190	\$59,325	0.626
PO-04-27-126-025	109	DENNISON ST	RVX	Ranch	C	0	1951	1,451	\$268,085			\$120,620	\$134,040	\$70,460	\$59,325	0.517
PO-04-27-127-003	110	DENNISON ST	RVX	Colonial/2Sty	C	10	1900	2,617	\$407,761			\$185,320	\$203,880	\$97,690	\$46,305	0.326
PO-04-27-126-024	111	DENNISON ST	RVX	Bungalow	C	-5	1950	1,820	\$257,696			\$116,460	\$128,850	\$73,250	\$35,910	0.253
PO-04-27-126-023	113	DENNISON ST	RVX	Bungalow	C	-5	1950	1,218	\$190,775	\$172,500	5/27/2021	\$89,970	\$95,390	\$94,460	\$35,910	0.27

PO-04-27-127-002	114	DENNISON ST	RVX	Ranch	C	5	1964	1,436	\$318,951			\$149,340	\$159,480	\$91,300	\$46,305	0.489
PO-04-27-126-022	115	DENNISON ST	RVX	Ranch	C	-5	1953	1,244	\$219,158			\$105,860	\$109,580	\$68,600	\$35,910	0.292
PO-04-27-127-001	120	DENNISON ST	RVX		D	0	0	0	\$35,910			\$19,160	\$17,960	\$4,790	\$35,910	0.286
PO-04-22-478-005	36	DEPOT ST	REX	SingleFamily	CD	0	1900	1,484	\$201,314			\$98,580	\$100,660	\$52,180	\$37,900	0.21
PO-04-22-459-013	37	DEPOT ST	REX	Ranch	C	-5	1984	1,267	\$237,869			\$115,890	\$118,930	\$61,820	\$50,000	0.31
PO-04-22-459-022	50	DEPOT ST	KDS	Other	C	5	2002	962	\$169,589			\$70,430	\$84,790	\$50,130	\$19,406	1
PO-04-22-459-014	51	DEPOT ST	KDS	Other	C	5	2002	962	\$172,475			\$71,610	\$86,240	\$71,120	\$19,406	1
PO-04-22-459-021	52	DEPOT ST	KDS	Other	C	5	2002	917	\$151,496			\$63,000	\$75,750	\$45,230	\$19,406	1
PO-04-22-459-015	53	DEPOT ST	KDS	Other	C	5	2002	924	\$146,438			\$60,930	\$73,220	\$49,280	\$19,406	1
PO-04-22-459-020	54	DEPOT ST	KDS	Other	C	5	2002	915	\$151,272			\$62,910	\$75,640	\$51,240	\$19,406	1
PO-04-22-459-016	55	DEPOT ST	KDS	TwnHse/Duplex	C	5	2002	917	\$145,595	\$175,000	2/6/2023	\$58,490	\$72,800	\$72,800	\$19,406	1
PO-04-22-459-019	56	DEPOT ST	KDS	Other	C	5	2002	917	\$149,223			\$62,070	\$74,610	\$45,230	\$19,406	1
PO-04-22-459-017	57	DEPOT ST	KDS	Other	C	5	2002	962	\$170,849			\$70,990	\$85,420	\$69,470	\$19,406	1
PO-04-22-459-018	58	DEPOT ST	KDS	Other	C	5	2002	607	\$119,417			\$49,850	\$59,710	\$37,500	\$19,406	1
PO-04-22-479-006	4	DIVISION ST	REX	Bungalow	CD	0	1950	1,360	\$244,100			\$89,370	\$122,050	\$85,110	\$37,900	0.23
PO-04-22-479-005	14	DIVISION ST	REX	Ranch	CD	0	1940	1,070	\$176,272	\$205,000	7/12/2023	\$85,370	\$88,140	\$88,140	\$37,900	0.2
PO-04-22-480-001	54	DIVISION ST	REX	Other	C	-5	1888	2,100	\$254,775			\$123,410	\$127,390	\$58,330	\$50,000	0.31
PO-04-22-457-015	23	EAST ST	REX	Other	C	-5	1925	2,424	\$333,714			\$165,810	\$166,860	\$84,670	\$37,900	0.27
PO-04-22-460-038	26	EAST ST	REX	Ranch	CD	0	1940	901	\$186,655			\$93,280	\$93,330	\$54,790	\$37,900	0.17
PO-04-22-457-016	29	EAST ST	REX	Other	CD	0	1930	1,834	\$224,176			\$109,260	\$112,090	\$55,380	\$37,900	0.19
PO-04-22-460-054	32	EAST ST	REX	Colonial/2Sty	C	-5	1888	1,631	\$233,743			\$0	\$116,870	\$83,030	\$37,900	0.29
PO-04-22-457-017	35	EAST ST	REX	Other	C	-5	1900	3,012	\$369,768			\$179,060	\$184,880	\$77,700	\$50,000	0.36
PO-04-22-457-018	43	EAST ST	REX	Bungalow	C	-5	1900	1,792	\$209,592			\$101,470	\$104,800	\$88,090	\$50,000	0.36
PO-04-22-460-055	44	EAST ST	REX	Colonial/2Sty	CD	0	1900	1,974	\$238,672	\$265,000	8/18/2023	\$0	\$119,340	\$119,340	\$50,000	0.32
PO-04-22-478-003	67	EAST ST	RDX	TwnHse/Duplex	C	0	1920	3,038	\$334,296			\$159,100	\$167,150	\$138,740	\$50,000	0.41
PO-04-22-478-004	79	EAST ST	REX	SingleFamily	C	-5	1911	1,414	\$204,598			\$99,450	\$102,300	\$50,360	\$50,000	0.34
PO-04-22-482-002	94	EAST ST	REX	Ranch	CD	0	1920	758	\$119,062			\$51,480	\$59,530	\$26,380	\$37,900	0.11
PO-04-22-479-008	99	EAST ST	REX	Other	CD	0	1900	2,931	\$294,127			\$143,230	\$147,060	\$138,780	\$50,000	0.34
PO-04-22-482-003	102	EAST ST	REX	Ranch	CD	0	1920	907	\$155,537	\$140,000	2/28/2023	\$78,640	\$77,770	\$77,770	\$37,900	0.26
PO-04-22-482-004	106	EAST ST	REX	Ranch	CD	0	1920	1,763	\$235,858			\$113,610	\$117,930	\$57,730	\$50,000	0.31
PO-04-22-479-009	109	EAST ST	REX	SingleFamily	C	0	1915	1,691	\$254,802			\$124,170	\$127,400	\$60,150	\$50,000	0.34
PO-04-22-482-005	112	EAST ST	REX	SingleFamily	CD	0	1920	1,037	\$163,203	\$150,000	3/16/2022	\$81,870	\$81,600	\$81,600	\$50,000	0.45
PO-04-22-482-006	118	EAST ST	REX	Colonial/2Sty	C	-5	1920	1,264	\$130,831			\$52,130	\$65,420	\$58,720	\$50,000	0.38
PO-04-22-482-007	122	EAST ST	REX	Colonial/2Sty	C	-5	1926	1,404	\$214,078			\$105,600	\$107,040	\$57,030	\$50,000	0.46
PO-04-22-480-008	123	EAST ST	REX	SingleFamily	C	0	1890	1,854	\$254,953			\$125,700	\$127,480	\$61,580	\$50,000	0.39
PO-04-22-482-008	126	EAST ST	REX	SingleFamily	C	-5	1920	1,908	\$270,351			\$129,900	\$135,180	\$72,710	\$50,000	0.35
PO-04-22-480-009	129	EAST ST	REX	Colonial/2Sty	C	0	1920	1,797	\$272,898			\$136,400	\$136,450	\$71,700	\$37,900	0.29
PO-04-22-480-010	135	EAST ST	REX	Other	C	-5	1920	1,664	\$230,127			\$116,000	\$115,060	\$57,580	\$37,900	0.28
PO-04-22-482-009	136	EAST ST	REX	Ranch	C	-5	1920	1,210	\$173,753			\$84,850	\$86,880	\$43,140	\$37,900	0.19
PO-04-22-480-011	141	EAST ST	REX	SingleFamily	C	-5	1900	1,139	\$175,192			\$86,160	\$87,600	\$81,360	\$37,900	0.2
PO-04-22-482-017	148	EAST ST	REX	Bungalow	C	-5	1920	859	\$147,259			\$65,400	\$73,630	\$64,480	\$37,900	0.1
PO-04-22-480-012	151	EAST ST	REX	Colonial/2Sty	C	0	1920	1,648	\$228,982			\$112,300	\$114,490	\$59,460	\$37,900	0.21
PO-04-22-482-018	154	EAST ST	REX	Ranch	C	-5	1920	679	\$145,610			\$63,480	\$72,810	\$56,120	\$37,900	0.1
PO-04-22-480-013	157	EAST ST	REX	Bungalow	C	0	1920	1,330	\$221,550			\$111,410	\$110,780	\$109,450	\$37,900	0.22

PO-04-22-480-017	167	EAST ST	REX	SingleFamily	C	0	1890	1,824	\$252,782			\$123,130	\$126,390	\$68,040	\$50,000	0.38
PO-04-22-482-019	168	EAST ST	REX	Ranch	C	-5	1970	1,159	\$217,156			\$107,510	\$108,580	\$58,780	\$37,900	0.2
PO-04-27-279-025	14	ENSLEY ST	REX	Colonial/2Sty	C	5	1890	1,894	\$244,021			\$117,830	\$122,010	\$57,680	\$50,000	0.31
PO-04-27-230-013	15	ENSLEY ST	REX	SingleFamily	C	0	1900	2,294	\$270,398			\$129,940	\$135,200	\$60,320	\$50,000	0.3
PO-04-27-230-014	19	ENSLEY ST	REX	SingleFamily	C	-5	1900	1,573	\$200,085			\$97,240	\$100,040	\$55,160	\$37,900	0.19
PO-04-27-279-027	20	ENSLEY ST	REX	Colonial/2Sty	C	-5	1930	2,246	\$248,983			\$119,580	\$124,490	\$61,800	\$37,900	0.17
PO-04-27-230-015	25	ENSLEY ST	REX	SingleFamily	C	-5	1870	1,608	\$209,738			\$104,340	\$104,870	\$52,390	\$37,900	0.24
PO-04-27-279-028	26	ENSLEY ST	REX	SingleFamily	C	-5	1940	2,414	\$294,039			\$143,740	\$147,020	\$77,460	\$37,900	0.16
PO-04-27-230-016	29	ENSLEY ST	REX	SingleFamily	C	0	1900	1,663	\$240,551			\$121,310	\$120,280	\$51,070	\$37,900	0.24
PO-04-27-279-029	30	ENSLEY ST	REX	Bungalow	C	5	1925	1,502	\$329,003			\$163,730	\$164,500	\$141,370	\$37,900	0.23
PO-04-27-231-007	37	ENSLEY ST	REX	Ranch	C	-5	1950	1,641	\$208,479			\$102,520	\$104,240	\$56,520	\$37,900	0.18
PO-04-26-101-018	1	GLASPIE ST	REX	Bungalow	C	0	1920	1,506	\$286,900	\$275,000	3/24/2023	\$141,210	\$143,450	\$143,450	\$50,000	0.33
PO-04-27-228-007	2	GLASPIE ST	REX	Colonial/2Sty	C	-5	1930	1,092	\$190,493	\$185,300	12/15/2022	\$87,690	\$95,250	\$92,070	\$37,900	0.11
PO-04-27-228-013	8	GLASPIE ST	REX	Colonial/2Sty	C	-5	1900	1,447	\$211,815			\$107,080	\$105,910	\$57,670	\$37,900	0.27
PO-04-26-101-005	9	GLASPIE ST	REX	Ranch	CD	0	1960	1,263	\$230,551			\$114,290	\$115,280	\$111,680	\$50,000	0.4
PO-04-23-354-016	21	GLASPIE ST	REX	Bungalow	C	0	1925	2,059	\$264,627			\$127,840	\$132,310	\$64,640	\$50,000	0.34
PO-04-23-354-002	23	GLASPIE ST	REX	Colonial/2Sty	CD	0	1900	1,307	\$183,349			\$91,080	\$91,670	\$53,670	\$37,900	0.23
PO-04-22-482-032	24	GLASPIE ST	REX	Ranch	CD	0	1929	929	\$174,657	\$200,000	2/2/2022	\$79,410	\$87,330	\$83,380	\$37,900	0.12
PO-04-22-482-031	26	GLASPIE ST	REX	Bungalow	CD	0	1882	1,196	\$178,077			\$81,310	\$89,040	\$40,880	\$37,900	0.12
PO-04-23-354-001	27	GLASPIE ST	REX	Colonial/2Sty	C	-5	1915	1,627	\$203,181			\$98,930	\$101,590	\$48,350	\$37,900	0.18
PO-04-23-352-018	29	GLASPIE ST	REX	Bungalow	CD	0	1947	1,428	\$223,061			\$108,710	\$111,530	\$54,720	\$50,000	0.32
PO-04-22-482-023	30	GLASPIE ST	REX	Ranch	C	-5	1900	2,152	\$310,295	\$282,000	10/6/2021	\$151,900	\$155,150	\$147,300	\$50,000	0.44
PO-04-22-482-022	34	GLASPIE ST	REX	SingleFamily	C	-5	1900	3,236	\$358,734			\$175,380	\$179,370	\$83,070	\$50,000	0.44
PO-04-23-352-006	35	GLASPIE ST	REX	Ranch	CD	0	1947	777	\$141,695			\$72,400	\$70,850	\$44,810	\$37,900	0.23
PO-04-23-352-005	37	GLASPIE ST	REX	SingleFamily	C	10	1890	2,267	\$329,836			\$161,780	\$164,920	\$77,080	\$50,000	0.46
PO-04-22-482-021	38	GLASPIE ST	REX	Colonial/2Sty	C	-5	1900	1,880	\$253,997			\$124,630	\$127,000	\$90,910	\$50,000	0.44
PO-04-22-482-020	42	GLASPIE ST	REX	Colonial/2Sty	C	10	1900	2,351	\$343,218			\$172,700	\$171,610	\$96,550	\$37,900	0.25
PO-04-23-352-004	43	GLASPIE ST	REX	Colonial/2Sty	CD	0	1868	1,668	\$220,448			\$109,240	\$110,220	\$54,610	\$50,000	0.44
PO-04-22-480-019	46	GLASPIE ST	REX	Colonial/2Sty	C	5	1999	1,470	\$308,571			\$150,650	\$154,290	\$86,150	\$37,900	0.17
PO-04-23-352-003	47	GLASPIE ST	REX	Other	C	-5	1920	2,486	\$346,356			\$170,780	\$173,180	\$84,770	\$58,500	0.74
PO-04-22-480-018	48	GLASPIE ST	REX	Ranch	C	5	2000	1,304	\$267,858			\$130,640	\$133,930	\$121,100	\$37,900	0.17
PO-04-23-352-021	51	GLASPIE ST	REX	Other	CD	0	1920	1,402	\$250,530			\$120,960	\$125,270	\$52,260	\$58,500	0.57
PO-04-22-480-015	52	GLASPIE ST	REX	SingleFamily	C	5	1998	1,487	\$291,353	\$335,900	12/21/2021	\$140,380	\$145,680	\$137,950	\$50,000	0.33
PO-04-23-352-001	55	GLASPIE ST	REX	Bungalow	C	-5	1942	1,912	\$304,379			\$148,590	\$152,190	\$89,970	\$68,500	1.44
PO-04-22-480-022	60	GLASPIE ST	REX	SingleFamily	C	-5	1900	1,361	\$208,809			\$103,000	\$104,400	\$50,330	\$50,000	0.38
PO-04-26-101-007	76	GLASPIE ST	REX	Ranch	CD	0	1970	841	\$152,418			\$66,360	\$76,210	\$70,240	\$37,900	0.11
PO-04-27-232-004	77	GLASPIE ST	REX	Ranch	C	0	2019	803	\$189,777			\$86,610	\$94,890	\$79,710	\$37,900	0.11
PO-04-26-101-016	100	GLASPIE ST	REX	Bungalow	CD	0	1940	894	\$174,565	\$156,750	11/14/2023	\$84,590	\$87,280	\$87,280	\$50,000	0.37
PO-04-26-155-016	133	GLASPIE ST	KAE	Colonial/2Sty	C	10	2002	1,521	\$275,839			\$132,580	\$137,920	\$87,000	\$50,023	0.207
PO-04-26-155-015	139	GLASPIE ST	KAE	Ranch	C	10	2002	1,416	\$290,622			\$139,640	\$145,310	\$89,220	\$50,023	0.207
PO-04-26-155-014	145	GLASPIE ST	KAE	Colonial/2Sty	C	10	2002	1,521	\$299,140			\$143,580	\$149,570	\$121,080	\$50,023	0.207
PO-04-26-155-013	151	GLASPIE ST	KAE	Colonial/2Sty	C	10	2002	1,521	\$275,565			\$132,450	\$137,780	\$121,880	\$50,023	0.207
PO-04-26-155-012	157	GLASPIE ST	KAE	Ranch	C	10	2002	1,405	\$310,616			\$149,160	\$155,310	\$115,100	\$50,023	0.207
PO-04-26-155-011	163	GLASPIE ST	KAE	Colonial/2Sty	C	10	2002	1,521	\$280,320	\$285,000	11/16/2021	\$134,710	\$140,160	\$132,310	\$50,023	0.207

PO-04-26-155-010	169	GLASPIE ST	KAE	Colonial/2Sty	C	10	2002	1,521	\$299,321	\$287,000	7/27/2023	\$141,800	\$149,660	\$149,660	\$50,023	0.207
PO-04-26-155-009	175	GLASPIE ST	KAE	Ranch	C	10	2002	1,416	\$284,903			\$136,910	\$142,450	\$89,220	\$50,023	0.207
PO-04-26-155-008	181	GLASPIE ST	KAE	Colonial/2Sty	C	10	2002	1,521	\$278,860			\$134,010	\$139,430	\$123,250	\$50,023	0.207
PO-04-26-155-007	187	GLASPIE ST	KAE	Colonial/2Sty	C	10	2002	1,521	\$279,219			\$134,190	\$139,610	\$86,430	\$50,023	0.207
PO-04-26-155-006	193	GLASPIE ST	KAE	Ranch	C	10	2002	1,405	\$292,175			\$140,380	\$146,090	\$88,960	\$50,023	0.207
PO-04-26-155-005	199	GLASPIE ST	KAE	Colonial/2Sty	C	10	2002	1,521	\$275,969			\$132,640	\$137,980	\$94,320	\$50,023	0.207
PO-04-26-155-004	205	GLASPIE ST	KAE	Colonial/2Sty	C	10	2002	1,521	\$288,412			\$138,570	\$144,210	\$106,400	\$50,023	0.207
PO-04-26-155-003	211	GLASPIE ST	KAE	Ranch	C	10	2002	1,416	\$300,942			\$144,550	\$150,470	\$100,670	\$50,023	0.207
PO-04-26-155-002	217	GLASPIE ST	KAE	Colonial/2Sty	C	10	2002	1,521	\$275,603			\$132,460	\$137,800	\$87,000	\$50,023	0.207
PO-04-26-155-001	223	GLASPIE ST	KAE	Colonial/2Sty	C	10	2002	1,521	\$277,784			\$133,510	\$138,890	\$87,370	\$50,023	0.207
PO-04-27-203-009	1	HOVEY ST	CME		D	0	0	0	\$0			\$0	\$0	\$0	\$0	0.594
PO-04-27-204-005	6	HOVEY ST	RVX	Ranch	C	-5	1955	1,126	\$155,976			\$73,830	\$77,990	\$43,780	\$35,910	0.264
PO-04-27-203-023	7	HOVEY ST	RVX	Colonial/2Sty	C	0	1867	2,327	\$317,807			\$147,870	\$158,900	\$115,460	\$35,910	0.271
PO-04-27-204-006	8	HOVEY ST	RVX	Colonial/2Sty	C	5	1928	2,172	\$325,525			\$151,880	\$162,760	\$76,680	\$35,910	0.264
PO-04-27-203-024	9	HOVEY ST	RVX	SingleFamily	CD	0	1850	1,748	\$205,173			\$92,950	\$102,590	\$75,760	\$35,910	0.215
PO-04-27-204-007	10	HOVEY ST	RVX	Bungalow	CD	0	1900	2,032	\$252,044			\$117,300	\$126,020	\$62,240	\$35,910	0.283
PO-04-27-203-025	11	HOVEY ST	RVX	Bungalow	CD	0	1912	1,941	\$254,714			\$114,990	\$127,360	\$59,270	\$35,910	0.209
PO-04-27-251-021	19	HOVEY ST	RVX	Ranch	CD	0	1976	1,213	\$280,916	\$205,000	6/25/2021	\$131,690	\$140,460	\$138,270	\$35,910	0.287
PO-04-27-252-005	20	HOVEY ST	RVX	Bungalow	CD	0	1920	995	\$163,227			\$72,870	\$81,610	\$41,280	\$35,910	0.151
PO-04-27-252-006	24	HOVEY ST	RVX	Bungalow	C	-5	1920	1,085	\$198,263			\$87,350	\$99,130	\$49,920	\$35,910	0.16
PO-04-27-254-001	38	HOVEY ST	RVX	Bungalow	C	-5	1940	935	\$194,820	\$249,500	12/1/2021	\$86,740	\$97,410	\$90,140	\$35,910	0.203
PO-04-27-253-010	39	HOVEY ST	RVX	Ranch	CD	0	1940	935	\$134,584			\$53,470	\$67,290	\$23,650	\$35,910	0.103
PO-04-27-254-004	40	HOVEY ST	RVX	Other	C	0	1917	1,885	\$215,139			\$98,680	\$107,570	\$50,750	\$35,910	0.223
PO-04-27-253-021	41	HOVEY ST	RVX	Bungalow	C	0	1940	1,314	\$211,861			\$98,370	\$105,930	\$93,620	\$46,305	0.486
PO-04-27-254-005	44	HOVEY ST	RVX	Other	C	0	1910	1,758	\$250,319	\$295,000	2/14/2022	\$111,960	\$125,160	\$117,550	\$46,305	0.336
PO-04-27-253-022	47	HOVEY ST	RVX	Bungalow	C	0	1935	1,424	\$236,005			\$111,110	\$118,000	\$68,570	\$46,305	0.485
PO-04-27-254-006	48	HOVEY ST	RVX	Bungalow	C	-5	1930	1,666	\$283,326			\$131,030	\$141,660	\$88,510	\$35,910	0.23
PO-04-27-253-023	49	HOVEY ST	RVX	SingleFamily	CD	0	1918	1,303	\$193,113			\$89,860	\$96,560	\$78,620	\$46,305	0.483
PO-04-27-253-024	53	HOVEY ST	RVX	SingleFamily	CD	0	1920	1,583	\$269,227			\$125,730	\$134,610	\$113,350	\$46,305	0.481
PO-04-27-254-007	54	HOVEY ST	RVX	Bungalow	C	-5	1940	1,296	\$226,890			\$100,710	\$113,450	\$103,430	\$35,910	0.146
PO-04-27-253-027	57	HOVEY ST	RVX	Ranch	C	0	1984	1,404	\$301,274	\$285,000	9/26/2022	\$141,400	\$150,640	\$148,470	\$35,910	0.284
PO-04-27-253-028	73	HOVEY ST	RVX	Colonial/2Sty	C	5	1910	2,148	\$295,999			\$131,400	\$148,000	\$72,050	\$59,325	0.589
PO-04-27-201-009	9	HUDSON ST	RVX	SingleFamily	C	0	1900	1,657	\$219,471			\$97,900	\$109,740	\$51,260	\$35,910	0.174
PO-04-27-201-010	11	HUDSON ST	RVX	Colonial/2Sty	C	0	1900	2,515	\$377,302			\$172,060	\$188,650	\$160,330	\$35,910	0.184
PO-04-27-201-011	15	HUDSON ST	CME		D	0	0	0	\$0			\$0	\$0	\$0	\$0	0.39
PO-04-27-201-012	17	HUDSON ST	RVX	SingleFamily	C	0	1920	1,348	\$210,404			\$91,760	\$105,200	\$48,030	\$35,910	0.137
PO-04-27-202-006	18	HUDSON ST	CME		D	0	0	0	\$0			\$0	\$0	\$0	\$0	1
PO-04-27-201-013	19	HUDSON ST	RVX	Colonial/2Sty	C	0	1958	2,086	\$285,544			\$129,880	\$142,770	\$91,420	\$35,910	0.178
PO-04-27-127-007	1	JERSEY ST	RVX	SingleFamily	C	-5	1950	1,437	\$200,652			\$91,970	\$100,330	\$62,400	\$46,305	0.332
PO-04-27-127-008	5	JERSEY ST	RVX	SingleFamily	C	-5	1900	1,100	\$161,072			\$73,230	\$80,540	\$42,450	\$35,910	0.234
PO-04-27-127-009	7	JERSEY ST	RVX	SingleFamily	CD	0	1900	1,336	\$199,636			\$92,590	\$99,820	\$80,090	\$46,305	0.461
PO-04-27-127-018	9	JERSEY ST	RVX	SingleFamily	C	-5	1890	1,647	\$271,079	\$260,000	11/1/2022	\$121,800	\$135,540	\$127,890	\$59,325	0.607
PO-04-27-128-030	10	JERSEY ST	RVX	Ranch	C	0	2019	1,620	\$389,104			\$179,720	\$194,550	\$188,700	\$35,910	0.23
PO-04-27-127-014	11	JERSEY ST	RVX	Other	C	10	1960	1,679	\$262,676			\$123,030	\$131,340	\$73,380	\$35,910	0.241

PO-04-27-128-011	12	JERSEY ST	RVX	Ranch	C	5	1956	1,188	\$255,005	\$223,000	7/7/2021	\$118,280	\$127,500	\$124,190	\$46,305	0.314
PO-04-27-127-015	13	JERSEY ST	RVX	Ranch	C	0	1969	941	\$245,216			\$115,360	\$122,610	\$69,190	\$35,910	0.238
PO-04-27-128-012	14	JERSEY ST	RVX	Ranch	C	0	1950	2,055	\$313,648			\$147,100	\$156,820	\$84,330	\$46,305	0.477
PO-04-27-126-081	136	JORDYN WAY	KVR	Colonial/2Sty	C	10	2022	1,532	\$320,296	\$358,000	8/24/2022	\$129,920	\$160,150	\$138,850	\$25,410	1
PO-04-27-126-078	137	JORDYN WAY	KVR	Colonial/2Sty	C	10	2022	1,532	\$317,805	\$337,500	4/10/2023	\$128,730	\$158,900	\$158,900	\$25,410	1
PO-04-27-126-080	138	JORDYN WAY	KVR	Colonial/2Sty	C	10	2022	1,532	\$320,403	\$354,900	9/30/2022	\$129,920	\$160,200	\$138,900	\$25,410	1
PO-04-27-126-077	139	JORDYN WAY	KVR	Colonial/2Sty	C	10	2021	1,532	\$312,465	\$325,000	7/14/2023	\$128,730	\$156,230	\$156,230	\$25,410	1
PO-04-27-126-079	140	JORDYN WAY	KVR	Colonial/2Sty	C	10	2022	1,532	\$315,429	\$339,000	7/7/2023	\$129,920	\$157,710	\$157,710	\$25,410	1
PO-04-27-126-070	146	JORDYN WAY	KVR	Colonial/2Sty	C	10	2008	1,551	\$275,062			\$113,770	\$137,530	\$86,970	\$25,410	1
PO-04-27-126-071	148	JORDYN WAY	KVR	Colonial/2Sty	C	10	2008	1,551	\$278,935	\$273,000	8/2/2022	\$115,330	\$139,470	\$121,090	\$25,410	1
PO-04-27-126-072	150	JORDYN WAY	KVR	Colonial/2Sty	C	10	2008	1,551	\$279,789			\$115,680	\$139,890	\$88,350	\$25,410	1
PO-04-27-126-064	152	JORDYN WAY	KVR	Colonial/2Sty	C	10	2005	1,561	\$274,360			\$113,510	\$137,180	\$89,640	\$25,410	1
PO-04-27-126-076	153	JORDYN WAY	KVR	Colonial/2Sty	C	10	2021	1,532	\$317,005	\$299,900	4/19/2022	\$130,560	\$158,500	\$137,080	\$25,410	1
PO-04-27-126-065	154	JORDYN WAY	KVR	Colonial/2Sty	C	10	2005	1,292	\$250,922			\$104,030	\$125,460	\$67,010	\$25,410	1
PO-04-27-126-075	155	JORDYN WAY	KVR	Colonial/2Sty	C	10	2021	1,532	\$317,005	\$304,900	4/19/2022	\$130,560	\$158,500	\$137,080	\$25,410	1
PO-04-27-126-066	156	JORDYN WAY	KVR	Colonial/2Sty	C	10	2005	1,561	\$276,478	\$299,900	10/26/2022	\$114,370	\$138,240	\$120,080	\$25,410	1
PO-04-22-384-013	22	LAFAYETTE ST	RVX	Bungalow	CD	0	1900	917	\$158,976			\$66,230	\$79,490	\$35,510	\$35,910	0.112
PO-04-22-385-006	27	LAFAYETTE ST	RVX	Ranch	C	-5	1960	1,325	\$260,403			\$0	\$130,200	\$103,670	\$59,325	0.531
PO-04-22-384-011	34	LAFAYETTE ST	RVX	Colonial/2Sty	C	0	1996	1,294	\$291,386			\$132,730	\$145,690	\$80,290	\$35,910	0.197
PO-04-22-384-010	46	LAFAYETTE ST	RVX	Colonial/2Sty	C	0	1996	1,210	\$298,775	\$275,000	5/31/2022	\$136,980	\$149,390	\$143,820	\$35,910	0.227
PO-04-22-384-009	58	LAFAYETTE ST	RVX	Ranch	C	-5	1996	1,208	\$334,916			\$153,840	\$167,460	\$87,760	\$46,305	0.365
PO-04-22-385-005	61	LAFAYETTE ST	RVX	Bungalow	D	10	1900	867	\$132,933			\$63,040	\$66,470	\$33,260	\$35,910	0.225
PO-04-22-385-021	71	LAFAYETTE ST	RVX	Bungalow	CD	0	1925	1,547	\$228,721			\$108,060	\$114,360	\$58,820	\$35,910	0.29
PO-04-22-385-019	81	LAFAYETTE ST	RVX	Colonial/2Sty	C	5	1994	2,006	\$324,178			\$149,240	\$162,090	\$143,600	\$46,305	0.404
PO-04-22-385-018	89	LAFAYETTE ST	RVX	Colonial/2Sty	C	0	1994	1,469	\$340,962			\$156,900	\$170,480	\$109,870	\$46,305	0.355
PO-04-26-402-008	15	LAKES EDGE CT	RXL	Colonial/2Sty	BC	0	1986	2,382	\$427,332			\$186,320	\$213,670	\$125,440	\$70,326	0.54
PO-04-26-402-009	25	LAKES EDGE CT	RXL	Ranch	C	10	1978	1,558	\$326,853			\$142,580	\$163,430	\$113,680	\$77,507	0.54
PO-04-26-402-010	35	LAKES EDGE CT	RXL	Ranch	C	10	1980	1,748	\$397,513			\$173,480	\$198,760	\$113,490	\$132,556	1.06
PO-04-26-402-011	45	LAKES EDGE CT	RXL	BiLevel	BC	0	1980	2,061	\$402,377	\$425,000	8/17/2023	\$100,030	\$201,190	\$201,190	\$145,190	0.92
PO-04-26-402-012	55	LAKES EDGE CT	RXL	Colonial/2Sty	BC	0	1990	2,096	\$447,059			\$195,130	\$223,530	\$199,560	\$70,978	0.41
PO-04-26-329-002	305	LAKES EDGE DR	RXL	Ranch	C	10	1978	1,773	\$367,702			\$160,650	\$183,850	\$127,860	\$64,660	0.66
PO-04-26-401-001	310	LAKES EDGE DR	RXL	Colonial/2Sty	BC	0	1978	2,242	\$438,090			\$191,270	\$219,050	\$120,460	\$82,533	0.37
PO-04-26-329-003	315	LAKES EDGE DR	RXL	Other	BC	0	1978	1,985	\$348,133			\$152,000	\$174,070	\$115,580	\$64,443	0.5
PO-04-26-401-002	320	LAKES EDGE DR	RXL	Other	BC	0	1976	2,002	\$378,893			\$165,330	\$189,450	\$168,950	\$80,828	0.4
PO-04-26-329-004	325	LAKES EDGE DR	RXL	Ranch	BC	0	1978	1,802	\$436,214			\$190,350	\$218,110	\$194,900	\$72,810	0.44
PO-04-26-401-003	330	LAKES EDGE DR	RXL	Ranch	C	10	1976	1,719	\$361,803			\$158,060	\$180,900	\$140,020	\$83,390	0.34
PO-04-26-402-001	335	LAKES EDGE DR	RXL	Colonial/2Sty	BC	0	1978	2,386	\$457,114			\$199,500	\$228,560	\$130,530	\$70,443	0.38
PO-04-26-401-004	340	LAKES EDGE DR	RXL	Colonial/2Sty	BC	0	1976	2,262	\$448,280			\$195,780	\$224,140	\$123,120	\$80,919	0.34
PO-04-26-402-002	345	LAKES EDGE DR	RXL	Ranch	C	10	1978	1,742	\$347,991			\$151,940	\$174,000	\$114,250	\$69,778	0.38
PO-04-26-401-005	350	LAKES EDGE DR	RXL	Ranch	C	10	1977	1,963	\$371,366			\$162,370	\$185,680	\$116,990	\$77,866	0.38
PO-04-26-402-003	355	LAKES EDGE DR	RXL	Ranch	C	10	1978	1,745	\$405,029			\$176,630	\$202,510	\$180,400	\$72,254	0.42
PO-04-26-401-006	360	LAKES EDGE DR	RXL	Colonial/2Sty	BC	0	1979	2,666	\$434,621			\$189,780	\$217,310	\$116,920	\$77,725	0.34
PO-04-26-402-004	365	LAKES EDGE DR	RXL	Other	BC	0	1978	2,102	\$366,485			\$159,950	\$183,240	\$135,250	\$82,166	0.4
PO-04-26-401-007	370	LAKES EDGE DR	RXL	Other	BC	0	1978	2,013	\$400,490			\$174,860	\$200,250	\$113,420	\$79,457	0.32

PO-04-26-402-005	375	LAKES EDGE DR	RXL	Ranch	C	10	1977	1,699	\$341,122			\$148,870	\$170,560	\$148,330	\$70,965	0.39
PO-04-26-401-008	380	LAKES EDGE DR	RXL	Ranch	C	10	1978	1,743	\$366,896	\$590,000	7/7/2023	\$160,650	\$183,450	\$183,450	\$77,816	0.31
PO-04-26-402-006	385	LAKES EDGE DR	RXL	SingleFamily	BC	0	1977	2,333	\$423,245			\$184,780	\$211,620	\$181,060	\$75,355	0.45
PO-04-26-401-009	390	LAKES EDGE DR	RXL	Ranch	BC	0	1978	1,587	\$462,082	\$522,500	1/9/2023	\$201,540	\$231,040	\$231,040	\$75,145	0.32
PO-04-26-402-007	395	LAKES EDGE DR	RXL	SingleFamily	BC	0	1978	1,662	\$339,788			\$148,260	\$169,890	\$151,530	\$70,037	0.49
PO-04-26-401-010	400	LAKES EDGE DR	RXL	Colonial/2Sty	BC	0	1978	2,508	\$464,644			\$202,890	\$232,320	\$126,700	\$82,614	0.34
PO-04-26-402-013	405	LAKES EDGE DR	RXL	Colonial/2Sty	B	-10	1979	2,235	\$472,996			\$207,490	\$236,500	\$145,090	\$75,392	0.63
PO-04-26-401-011	410	LAKES EDGE DR	RXL	BiLevel	BC	0	1977	1,758	\$365,040			\$159,370	\$182,520	\$109,940	\$85,096	0.41
PO-04-26-402-014	415	LAKES EDGE DR	RXL	Ranch	BC	0	1977	1,601	\$383,204			\$167,380	\$191,600	\$121,390	\$86,245	0.66
PO-04-26-401-012	420	LAKES EDGE DR	RXL	Ranch	C	10	1977	1,988	\$387,614			\$169,400	\$193,810	\$124,550	\$76,686	0.39
PO-04-26-402-015	425	LAKES EDGE DR	RXL	Colonial/2Sty	C	10	1988	2,103	\$341,970			\$149,090	\$170,990	\$141,440	\$71,870	0.32
PO-04-26-401-013	430	LAKES EDGE DR	RXL	Colonial/2Sty	BC	0	1978	2,261	\$444,473			\$194,150	\$222,240	\$193,290	\$82,129	0.36
PO-04-26-402-016	435	LAKES EDGE DR	RXL	Ranch	BC	0	1987	1,748	\$419,555			\$182,960	\$209,780	\$118,770	\$70,240	0.33
PO-04-26-401-014	440	LAKES EDGE DR	RXL	Ranch	C	10	1977	1,584	\$321,109			\$140,110	\$160,550	\$102,130	\$76,372	0.35
PO-04-26-402-017	445	LAKES EDGE DR	RXL	Colonial/2Sty	BC	0	1986	1,764	\$371,361	\$380,000	9/12/2022	\$162,070	\$185,680	\$170,170	\$72,733	0.32
PO-04-26-401-015	450	LAKES EDGE DR	RXL	Colonial/2Sty	BC	0	1977	2,309	\$444,678			\$195,880	\$222,340	\$123,310	\$78,921	0.35
PO-04-26-402-018	455	LAKES EDGE DR	RXL	Ranch	BC	0	1988	1,937	\$453,784	\$409,900	2/21/2023	\$198,450	\$226,890	\$226,890	\$72,794	0.3
PO-04-26-401-016	460	LAKES EDGE DR	RXL	Colonial/2Sty	BC	0	1977	2,440	\$420,594			\$183,660	\$210,300	\$115,410	\$82,054	0.36
PO-04-26-427-001	465	LAKES EDGE DR	RXL	Colonial/2Sty	BC	0	1986	2,131	\$387,566			\$169,150	\$193,780	\$98,130	\$70,200	0.3
PO-04-26-426-001	470	LAKES EDGE DR	RXL	Ranch	C	10	1977	1,727	\$369,168			\$161,070	\$184,580	\$164,450	\$83,768	0.4
PO-04-26-427-002	475	LAKES EDGE DR	RXL	Ranch	C	10	1986	1,581	\$335,759			\$146,380	\$167,880	\$90,660	\$75,406	0.36
PO-04-26-426-002	480	LAKES EDGE DR	RXL	Ranch	C	10	1977	1,731	\$366,550			\$160,080	\$183,280	\$117,660	\$76,560	0.35
PO-04-26-427-003	485	LAKES EDGE DR	RXL	Ranch	C	10	1986	1,591	\$337,617			\$147,450	\$168,810	\$89,810	\$72,689	0.32
PO-04-26-426-003	490	LAKES EDGE DR	RXL	Colonial/2Sty	B	-10	1978	2,818	\$538,702			\$235,120	\$269,350	\$146,770	\$78,804	0.33
PO-04-26-427-004	495	LAKES EDGE DR	RXL	Other	BC	0	1977	1,948	\$354,012			\$154,450	\$177,010	\$123,960	\$73,252	0.45
PO-04-26-426-004	500	LAKES EDGE DR	RXL	Colonial/2Sty	B	-10	1987	2,633	\$530,679			\$231,420	\$265,340	\$215,860	\$78,649	0.3
PO-04-26-427-005	505	LAKES EDGE DR	RXL	Colonial/2Sty	BC	0	1977	2,270	\$384,522			\$168,070	\$192,260	\$93,510	\$75,355	0.29
PO-04-26-426-005	510	LAKES EDGE DR	RXL	SingleFamily	BC	0	1986	2,682	\$481,841			\$209,970	\$240,920	\$184,890	\$80,628	0.35
PO-04-26-427-007	515	LAKES EDGE DR	RXL	Ranch	C	10	1987	1,735	\$372,473			\$161,590	\$186,240	\$165,340	\$74,513	0.26
PO-04-26-426-006	520	LAKES EDGE DR	RXL	Ranch	C	10	1985	1,480	\$339,431			\$147,940	\$169,720	\$88,650	\$85,215	0.35
PO-04-26-427-008	525	LAKES EDGE DR	RXL	Ranch	C	10	1987	1,734	\$368,184			\$160,470	\$184,090	\$95,180	\$73,779	0.27
PO-04-26-426-007	530	LAKES EDGE DR	RXL	Ranch	C	10	1987	1,727	\$387,835			\$169,020	\$193,920	\$100,110	\$84,229	0.36
PO-04-26-427-009	535	LAKES EDGE DR	RXL	Ranch	C	10	1988	1,747	\$372,486			\$162,520	\$186,240	\$165,870	\$78,694	0.28
PO-04-26-276-001	540	LAKES EDGE DR	RXL	SingleFamily	C	10	1979	2,312	\$382,059			\$166,660	\$191,030	\$114,300	\$80,613	0.35
PO-04-26-427-010	545	LAKES EDGE DR	RXL	Ranch	C	10	1988	1,864	\$358,347			\$156,300	\$179,170	\$159,750	\$64,963	0.29
PO-04-26-276-002	550	LAKES EDGE DR	RXL	Ranch	C	10	1979	1,741	\$415,668			\$181,200	\$207,830	\$184,910	\$79,606	0.35
PO-04-26-427-011	555	LAKES EDGE DR	RXL	Ranch	C	5	1987	1,619	\$327,572			\$142,790	\$163,790	\$109,660	\$70,811	0.29
PO-04-26-276-003	560	LAKES EDGE DR	RXL	Ranch	C	10	1986	1,728	\$385,844			\$168,220	\$192,920	\$115,560	\$83,809	0.33
PO-04-26-427-012	565	LAKES EDGE DR	RXL	CapeCod	B	-10	1995	2,203	\$478,811			\$208,490	\$239,410	\$213,120	\$76,380	0.3
PO-04-26-276-004	570	LAKES EDGE DR	RXL	Contemporary	BC	0	1987	2,488	\$495,117			\$215,900	\$247,560	\$158,370	\$83,809	0.33
PO-04-26-278-001	575	LAKES EDGE DR	RXL	Colonial/2Sty	C	10	1997	1,930	\$415,981			\$181,060	\$207,990	\$158,780	\$105,922	0.77
PO-04-26-276-005	580	LAKES EDGE DR	RXL	Ranch	C	10	1980	1,679	\$398,794			\$174,100	\$199,400	\$116,510	\$83,720	0.32
PO-04-26-276-006	590	LAKES EDGE DR	RXL	SingleFamily	C	10	1987	2,442	\$398,795			\$175,430	\$199,400	\$113,400	\$82,665	0.32
PO-04-26-277-003	595	LAKES EDGE DR	RXL1	Colonial/2Sty	BC	0	1987	2,109	\$374,374			\$160,520	\$187,190	\$87,710	\$40,700	0.46

PO-04-26-276-007	600	LAKES EDGE DR	RXL	Ranch	C	10	1979	1,805	\$396,779			\$173,610	\$198,390	\$151,010	\$77,146	0.32
PO-04-26-277-002	605	LAKES EDGE DR	RXL1	Ranch	C	10	1987	1,635	\$363,210	\$410,000	8/14/2023	\$150,790	\$181,610	\$181,610	\$38,609	0.33
PO-04-26-276-008	610	LAKES EDGE DR	RXL	Ranch	C	10	1987	1,695	\$367,099			\$160,020	\$183,550	\$112,020	\$75,744	0.32
PO-04-26-277-001	615	LAKES EDGE DR	RXL1	SingleFamily	BC	0	1987	2,089	\$364,898			\$156,410	\$182,450	\$100,710	\$37,974	0.29
PO-04-26-276-009	620	LAKES EDGE DR	RXL	Ranch	C	10	1987	2,285	\$460,832			\$200,920	\$230,420	\$133,810	\$74,913	0.33
PO-04-26-227-015	625	LAKES EDGE DR	RXL1	SingleFamily	BC	0	1988	2,119	\$368,130			\$157,790	\$184,070	\$91,990	\$37,747	0.29
PO-04-26-276-010	630	LAKES EDGE DR	RXL	Ranch	C	10	1987	1,847	\$369,678			\$161,200	\$184,840	\$114,030	\$76,720	0.33
PO-04-26-227-014	635	LAKES EDGE DR	RXL1	Ranch	BC	0	1988	1,923	\$435,993			\$188,140	\$218,000	\$116,650	\$38,600	0.32
PO-04-26-226-016	640	LAKES EDGE DR	RXL	SingleFamily	B	-10	1987	2,488	\$566,562			\$247,170	\$283,280	\$253,130	\$79,272	0.33
PO-04-26-227-013	645	LAKES EDGE DR	RXL1	Colonial/2Sty	C	10	1991	3,200	\$482,530			\$206,380	\$241,270	\$132,820	\$38,227	0.34
PO-04-26-226-015	650	LAKES EDGE DR	RXL	Ranch	B	-10	1988	2,165	\$554,495			\$241,870	\$277,250	\$149,220	\$76,167	0.32
PO-04-26-227-012	655	LAKES EDGE DR	RXL1	Colonial/2Sty	BC	0	1989	2,539	\$428,978			\$183,850	\$214,490	\$105,660	\$39,733	0.43
PO-04-26-226-014	660	LAKES EDGE DR	RXL	SingleFamily	B	0	1991	3,183	\$742,749			\$323,870	\$371,370	\$186,700	\$83,047	0.31
PO-04-26-227-011	665	LAKES EDGE DR	RXL1	Colonial/2Sty	BC	0	1990	2,240	\$395,867	\$400,000	2/18/2022	\$169,640	\$197,930	\$178,120	\$38,209	0.36
PO-04-26-226-013	670	LAKES EDGE DR	RXL	SingleFamily	B	-10	1988	3,052	\$631,955			\$275,880	\$315,980	\$161,510	\$80,711	0.31
PO-04-26-227-010	675	LAKES EDGE DR	RXL1	Colonial/2Sty	BC	0	1990	2,125	\$374,346			\$160,450	\$187,170	\$94,210	\$40,401	0.28
PO-04-26-226-012	680	LAKES EDGE DR	RXL	Ranch	BC	0	1988	2,423	\$552,891	\$560,000	6/24/2021	\$241,290	\$276,450	\$247,000	\$80,572	0.33
PO-04-26-227-009	685	LAKES EDGE DR	RXL1	Colonial/2Sty	BC	0	1988	1,979	\$368,700			\$158,140	\$184,350	\$92,170	\$48,072	0.39
PO-04-26-226-011	690	LAKES EDGE DR	RXL	Colonial/2Sty	B	0	1991	2,732	\$650,174			\$283,410	\$325,090	\$166,560	\$81,117	0.36
PO-04-26-227-005	695	LAKES EDGE DR	RXL1	Colonial/2Sty	BC	0	1989	2,403	\$423,494			\$181,490	\$211,750	\$102,540	\$39,472	0.33
PO-04-26-226-010	700	LAKES EDGE DR	RXL	Colonial/2Sty	B	10	1995	3,174	\$813,626			\$354,350	\$406,810	\$363,140	\$84,044	0.44
PO-04-26-227-004	705	LAKES EDGE DR	RXL1	Colonial/2Sty	BC	0	1989	2,143	\$387,127			\$166,030	\$193,560	\$94,710	\$38,563	0.31
PO-04-26-226-009	710	LAKES EDGE DR	RXL	SingleFamily	B	-10	1988	2,709	\$583,044			\$254,320	\$291,520	\$154,890	\$82,625	0.41
PO-04-26-227-003	715	LAKES EDGE DR	RXL1	Colonial/2Sty	BC	0	1991	2,046	\$390,085			\$167,090	\$195,040	\$95,550	\$38,283	0.31
PO-04-26-226-008	720	LAKES EDGE DR	RXL	Ranch	B	-10	1988	2,193	\$544,044			\$237,410	\$272,020	\$243,040	\$80,597	0.38
PO-04-26-227-002	725	LAKES EDGE DR	RXL1	SingleFamily	BC	0	1991	2,460	\$484,366			\$210,820	\$242,180	\$166,400	\$40,414	0.34
PO-04-26-226-007	730	LAKES EDGE DR	RXL	SingleFamily	B	-10	1988	2,584	\$576,334			\$251,380	\$288,170	\$257,480	\$79,035	0.36
PO-04-26-227-001	735	LAKES EDGE DR	RXL1	Colonial/2Sty	B	-10	1996	2,518	\$627,577			\$269,440	\$313,790	\$221,390	\$56,889	0.32
PO-04-26-226-006	740	LAKES EDGE DR	RXL	Ranch	BC	0	1988	2,138	\$509,265			\$222,100	\$254,630	\$227,360	\$75,405	0.36
PO-04-26-226-005	750	LAKES EDGE DR	RXL	SingleFamily	B	-10	1989	2,555	\$579,348			\$252,630	\$289,670	\$207,540	\$80,999	0.37
PO-04-26-226-004	760	LAKES EDGE DR	RXL	Colonial/2Sty	B	-10	1991	2,379	\$529,723			\$230,880	\$264,860	\$228,040	\$78,469	0.34
PO-04-26-226-003	770	LAKES EDGE DR	RXL	Ranch	BC	0	1996	1,842	\$535,480			\$233,240	\$267,740	\$136,500	\$79,096	0.33
PO-04-26-226-002	780	LAKES EDGE DR	RXL	Colonial/2Sty	B	-10	1996	2,676	\$583,863			\$254,350	\$291,930	\$237,670	\$75,995	0.32
PO-04-26-226-001	790	LAKES EDGE DR	RXL	Ranch	BC	0	1991	2,244	\$586,466			\$255,480	\$293,230	\$155,890	\$114,550	0.58
PO-04-23-354-003	6	LAKEVILLE CT	REX	Colonial/2Sty	C	-5	1981	1,426	\$264,084			\$132,250	\$132,040	\$96,370	\$37,900	0.23
PO-04-23-352-019	7	LAKEVILLE CT	REX	Colonial/2Sty	C	-5	1926	1,245	\$170,950			\$80,720	\$85,480	\$43,440	\$37,900	0.15
PO-04-23-354-022	8	LAKEVILLE CT	REX	Bungalow	CD	0	1920	1,157	\$176,797			\$93,760	\$88,400	\$51,900	\$50,000	0.3
PO-04-23-352-012	9	LAKEVILLE CT	REX	Bungalow	CD	0	1900	832	\$139,660			\$62,290	\$69,830	\$32,370	\$37,900	0.12
PO-04-23-354-005	10	LAKEVILLE CT	REX	Bungalow	CD	0	1888	678	\$105,057			\$51,900	\$52,530	\$36,310	\$37,900	0.2
PO-04-23-352-013	13	LAKEVILLE CT	REX	Bungalow	C	-5	1920	932	\$144,253			\$64,500	\$72,130	\$38,240	\$37,900	0.12
PO-04-23-354-017	14	LAKEVILLE CT	REX	Bungalow	C	-5	1920	923	\$161,981			\$81,790	\$80,990	\$68,640	\$50,000	0.46
PO-04-23-352-025	15	LAKEVILLE CT	REX	Bungalow	C	-10	1920	1,342	\$203,465	\$250,000	12/20/2021	\$101,960	\$101,730	\$99,970	\$37,900	0.21
PO-04-23-352-023	501	LAKEVILLE RD	REX	Ranch	CD	0	1920	861	\$64,275			\$32,930	\$32,140	\$22,270	\$58,500	0.69
PO-04-26-129-002	818	LEIGHTON LN	R-X1	Colonial/2Sty	BC	0	1989	2,060	\$372,909			\$170,580	\$186,450	\$133,580	\$57,070	0.179

PO-04-26-129-003	824	LEIGHTON LN	R-X1	Colonial/2Sty	BC	0	1989	2,183	\$387,150			\$176,820	\$193,580	\$96,900	\$57,070	0.179
PO-04-26-129-004	830	LEIGHTON LN	R-X1	Colonial/2Sty	BC	0	1989	1,715	\$331,946	\$335,000	6/23/2023	\$151,980	\$165,970	\$165,970	\$57,452	0.181
PO-04-26-129-005	836	LEIGHTON LN	R-X1	Colonial/2Sty	BC	0	1989	2,312	\$412,176			\$188,320	\$206,090	\$141,440	\$62,684	0.234
PO-04-26-128-002	963	LEIGHTON LN	R-X1	SingleFamily	BC	0	1990	1,965	\$338,605			\$155,260	\$169,300	\$82,170	\$62,945	0.193
PO-04-26-128-003	969	LEIGHTON LN	R-X1	SingleFamily	BC	0	1990	2,953	\$492,469			\$224,370	\$246,230	\$111,960	\$61,460	0.193
PO-04-26-128-004	975	LEIGHTON LN	R-X1	SingleFamily	BC	0	1990	1,990	\$362,182	\$307,740	5/13/2022	\$165,630	\$181,090	\$173,910	\$59,938	0.201
PO-04-26-128-005	981	LEIGHTON LN	R-X1	Colonial/2Sty	BC	0	1990	2,199	\$367,771			\$168,250	\$183,890	\$91,080	\$60,856	0.239
PO-04-27-277-021	7	LINCOLN ST	RVX	Ranch	CD	0	1953	876	\$146,626			\$63,520	\$73,310	\$38,940	\$35,910	0.108
PO-04-27-277-020	9	LINCOLN ST	RVX	Ranch	C	0	1940	808	\$174,717			\$79,190	\$87,360	\$80,480	\$46,305	0.3
PO-04-27-278-017	10	LINCOLN ST	RVX	Bungalow	C	0	1890	1,451	\$200,612			\$93,940	\$100,310	\$53,270	\$35,910	0.278
PO-04-27-277-019	11	LINCOLN ST	RVX	Ranch	D	10	1940	536	\$146,826			\$71,020	\$73,410	\$73,410	\$35,910	0.285
PO-04-27-278-010	14	LINCOLN ST	RVX	Bungalow	C	0	1950	1,090	\$200,806			\$94,870	\$100,400	\$68,890	\$46,305	0.466
PO-04-27-277-018	15	LINCOLN ST	RVX	Colonial/2Sty	C	0	1900	1,394	\$211,242			\$98,650	\$105,620	\$54,070	\$46,305	0.408
PO-04-27-278-009	16	LINCOLN ST	RVX	Ranch	C	-5	1940	1,170	\$171,232			\$81,180	\$85,620	\$49,290	\$35,910	0.27
PO-04-27-277-017	17	LINCOLN ST	RVX	Colonial/2Sty	C	0	1900	1,670	\$239,853			\$110,620	\$119,930	\$57,900	\$46,305	0.393
PO-04-27-278-008	18	LINCOLN ST	RVX	Ranch	C	-5	1969	986	\$206,960			\$90,350	\$103,480	\$52,400	\$35,910	0.138
PO-04-27-277-016	21	LINCOLN ST	RVX	Bungalow	C	-5	1900	1,455	\$226,914			\$105,170	\$113,460	\$87,180	\$46,305	0.472
PO-04-27-278-007	22	LINCOLN ST	RVX	Bungalow	CD	0	1950	889	\$148,870			\$70,920	\$74,440	\$51,790	\$35,910	0.269
PO-04-27-277-015	23	LINCOLN ST	RVX	Bungalow	C	-5	1936	1,320	\$192,919	\$141,500	2/18/2022	\$89,680	\$96,460	\$94,160	\$35,910	0.23
PO-04-27-278-006	24	LINCOLN ST	RVX	SingleFamily	C	-5	1940	1,380	\$264,705			\$120,420	\$132,350	\$70,620	\$35,910	0.194
PO-04-27-277-014	25	LINCOLN ST	RVX	Ranch	CD	0	1942	941	\$134,644			\$62,180	\$67,320	\$44,120	\$35,910	0.207
PO-04-27-278-005	26	LINCOLN ST	RVX	Ranch	CD	0	1950	947	\$129,092			\$58,010	\$64,550	\$34,920	\$35,910	0.19
PO-04-27-277-013	27	LINCOLN ST	RVX	Ranch	CD	0	1940	829	\$146,642			\$67,540	\$73,320	\$41,960	\$35,910	0.206
PO-04-27-278-004	28	LINCOLN ST	RVX	Ranch	CD	0	1950	886	\$150,863			\$68,000	\$75,430	\$43,620	\$35,910	0.189
PO-04-27-277-012	29	LINCOLN ST	RVX	Bungalow	C	-5	1930	1,010	\$175,321			\$80,460	\$87,660	\$61,590	\$35,910	0.206
PO-04-27-278-003	30	LINCOLN ST	RVX	Bungalow	C	-5	1927	1,317	\$204,376			\$93,750	\$102,190	\$53,720	\$35,910	0.249
PO-04-27-277-011	31	LINCOLN ST	RVX	Colonial/2Sty	C	-5	1900	1,592	\$200,735			\$91,090	\$100,370	\$48,910	\$35,910	0.198
PO-04-27-278-002	32	LINCOLN ST	RVX	Bungalow	D	10	1928	799	\$140,959			\$64,700	\$70,480	\$35,100	\$35,910	0.227
PO-04-27-278-001	34	LINCOLN ST	RVX	Ranch	CD	0	1951	869	\$181,606			\$85,680	\$90,800	\$89,370	\$46,305	0.387
PO-04-27-277-010	35	LINCOLN ST	RVX	Colonial/2Sty	C	-5	1940	1,126	\$152,673			\$69,380	\$76,340	\$43,960	\$35,910	0.191
PO-04-22-459-007	18	LOUCK ST	REX	Bungalow	C	-5	1940	1,686	\$239,131			\$115,810	\$119,570	\$64,750	\$50,000	0.33
PO-04-22-459-011	20	LOUCK ST	REX	Bungalow	C	-5	1940	815	\$144,000			\$74,480	\$72,000	\$44,960	\$37,900	0.27
PO-04-22-379-005	2	MAPLE ST	RVX	SingleFamily	CD	0	1928	877	\$162,460			\$74,910	\$81,230	\$33,880	\$35,910	0.247
PO-04-22-378-012	3	MAPLE ST	RVX	Ranch	C	-5	1968	1,096	\$193,229			\$86,180	\$96,610	\$49,650	\$35,910	0.16
PO-04-22-379-006	4	MAPLE ST	RVX	Colonial/2Sty	C	0	1920	1,460	\$214,061			\$98,140	\$107,030	\$51,600	\$35,910	0.247
PO-04-22-378-013	5	MAPLE ST	RVX	Bungalow	C	-5	1936	975	\$160,220			\$74,660	\$80,110	\$45,230	\$35,910	0.269
PO-04-22-379-007	8	MAPLE ST	RVX	Ranch	D	10	1910	600	\$110,715			\$50,740	\$55,360	\$30,970	\$35,910	0.243
PO-04-22-378-015	9	MAPLE ST	RVX	SingleFamily	CD	0	1950	889	\$138,676			\$66,210	\$69,340	\$40,920	\$35,910	0.244
PO-04-22-378-014	11	MAPLE ST	RVX	Colonial/2Sty	C	-5	1940	2,112	\$250,732			\$115,210	\$125,370	\$53,060	\$35,910	0.263
PO-04-22-379-014	14	MAPLE ST	RVX	Ranch	CD	0	1947	1,800	\$249,752			\$117,030	\$124,880	\$79,300	\$35,910	0.274
PO-04-27-204-013	11	MECHANIC ST	RVX	Colonial/2Sty	C	10	1930	2,385	\$296,094			\$133,490	\$148,050	\$72,780	\$35,910	0.205
PO-04-27-204-014	13	MECHANIC ST	RVX	Colonial/2Sty	C	0	1920	1,536	\$232,052			\$101,110	\$116,030	\$52,950	\$35,910	0.19
PO-04-27-204-015	15	MECHANIC ST	RVX	Colonial/2Sty	C	0	1864	1,696	\$241,331			\$111,320	\$120,670	\$70,150	\$35,910	0.28
PO-04-27-204-016	17	MECHANIC ST	RVX	Colonial/2Sty	C	0	1905	1,552	\$222,862			\$98,160	\$111,430	\$94,100	\$35,910	0.16

PO-04-27-204-017	19	MECHANIC ST	RVX	Colonial/2Sty	C	5	1850	1,966	\$255,443	\$269,900	8/12/2022	\$116,400	\$127,720	\$122,220	\$46,305	0.365
PO-04-27-276-007	26	MECHANIC ST	RVX	Bungalow	C	-5	1930	1,781	\$237,200			\$111,040	\$118,600	\$67,170	\$35,910	0.279
PO-04-27-276-008	32	MECHANIC ST	CME		D	0	0	0	\$0			\$0	\$0	\$0	\$0	0.2
PO-04-27-276-009	34	MECHANIC ST	RVX	Colonial/2Sty	C	-5	1870	1,587	\$286,775			\$131,530	\$143,390	\$127,510	\$35,910	0.229
PO-04-27-276-010	38	MECHANIC ST	RDX	MultiTenant	C	-5	1870	1,261	\$161,425			\$78,190	\$80,710	\$66,030	\$35,910	0.258
PO-04-27-252-009	41	MECHANIC ST	RVX	Bungalow	CD	0	1930	1,400	\$213,081			\$95,710	\$106,540	\$53,980	\$35,910	0.206
PO-04-27-276-011	42	MECHANIC ST	RVX	Bungalow	C	0	1850	2,595	\$293,326			\$131,710	\$146,660	\$67,100	\$46,305	0.341
PO-04-27-252-010	43	MECHANIC ST	RVX	SingleFamily	C	0	1900	2,126	\$267,506			\$120,610	\$133,750	\$64,800	\$46,305	0.366
PO-04-27-254-010	47	MECHANIC ST	RVX	Colonial/2Sty	C	0	1895	1,771	\$283,189	\$230,000	6/18/2021	\$132,730	\$141,590	\$139,360	\$35,910	0.263
PO-04-27-276-012	50	MECHANIC ST	RVX	Ranch	CD	0	1978	1,191	\$214,071	\$219,900	8/24/2023	\$97,680	\$107,040	\$107,040	\$46,305	0.311
PO-04-27-254-011	55	MECHANIC ST	RVX	Colonial/2Sty	C	0	1930	1,529	\$233,169			\$107,390	\$116,580	\$63,740	\$35,910	0.253
PO-04-27-276-013	56	MECHANIC ST	RVX	Ranch	C	10	1932	2,270	\$460,230			\$207,390	\$230,120	\$209,920	\$59,325	0.887
PO-04-27-254-012	59	MECHANIC ST	RVX	Ranch	C	-5	1920	1,436	\$222,549	\$240,000	8/25/2023	\$91,810	\$111,270	\$111,270	\$35,910	0.254
PO-04-27-254-013	63	MECHANIC ST	RVX	SingleFamily	C	0	1890	2,562	\$305,448			\$141,900	\$152,720	\$80,160	\$35,910	0.253
PO-04-27-254-014	65	MECHANIC ST	RVX	Colonial/2Sty	C	0	1930	2,324	\$294,886			\$134,770	\$147,440	\$72,960	\$35,910	0.254
PO-04-27-277-001	68	MECHANIC ST	RVX	Ranch	D	10	1948	894	\$133,881			\$62,990	\$66,940	\$37,240	\$35,910	0.224
PO-04-27-277-008	70	MECHANIC ST	RVX	Ranch	CD	0	1910	1,000	\$144,071			\$65,780	\$72,040	\$36,850	\$35,910	0.217
PO-04-27-255-001	74	MECHANIC ST	CME		D	0	0	0	\$0			\$0	\$0	\$0	\$0	8
PO-04-23-352-026	17	MELVIN J CT	KMJ	SingleFamily	C	10	2014	1,636	\$314,095			\$141,110	\$157,050	\$122,170	\$50,023	0.346
PO-04-23-352-027	25	MELVIN J CT	KMJ	Ranch	C	10	2005	1,581	\$293,953			\$132,380	\$146,980	\$122,520	\$50,023	0.289
PO-04-23-352-037	30	MELVIN J CT	KMJ	Colonial/2Sty	BC	0	2013	1,664	\$332,385	\$300,000	6/29/2021	\$149,290	\$166,190	\$150,360	\$50,023	0.325
PO-04-23-352-028	33	MELVIN J CT	KMJ	Ranch	C	10	2006	1,675	\$296,902			\$133,760	\$148,450	\$91,120	\$50,023	0.279
PO-04-23-352-036	38	MELVIN J CT	KMJ	SingleFamily	C	10	2005	1,640	\$288,355	\$325,000	8/30/2022	\$129,920	\$144,180	\$136,410	\$50,023	0.279
PO-04-23-352-029	41	MELVIN J CT	KMJ	Colonial/2Sty	BC	0	2015	1,646	\$359,247			\$160,940	\$179,620	\$156,830	\$50,023	0.318
PO-04-23-352-035	46	MELVIN J CT	KMJ	Ranch	C	10	2014	1,615	\$319,692			\$143,650	\$159,850	\$132,980	\$50,023	0.303
PO-04-23-352-030	49	MELVIN J CT	KMJ	Colonial/2Sty	C	10	2014	1,653	\$311,235			\$139,850	\$155,620	\$120,550	\$50,023	0.326
PO-04-23-352-034	54	MELVIN J CT	KMJ	Colonial/2Sty	BC	0	2016	1,675	\$340,513			\$152,690	\$170,260	\$134,520	\$50,023	0.282
PO-04-23-352-031	57	MELVIN J CT	KMJ	Ranch	BC	0	2014	1,818	\$413,452			\$184,910	\$206,730	\$151,890	\$50,023	0.357
PO-04-23-352-033	62	MELVIN J CT	KMJ	Colonial/2Sty	BC	0	2015	1,652	\$361,897			\$162,100	\$180,950	\$145,530	\$50,023	0.311
PO-04-23-352-032	70	MELVIN J CT	KMJ	Ranch	C	10	2006	1,521	\$284,336			\$128,140	\$142,170	\$88,110	\$50,023	0.287
PO-04-27-227-006	2	MILL ST	CME		D	0	0	0	\$0			\$0	\$0	\$0	\$0	0.326
PO-04-22-481-004	30	MILL ST	REX	Bungalow	C	-5	1885	1,250	\$145,878			\$73,760	\$72,940	\$41,340	\$19,500	0.09
PO-04-22-460-030	31	MILL ST	REX	Bungalow	C	-5	1920	987	\$141,008			\$63,440	\$70,500	\$32,410	\$37,900	0.12
PO-04-22-481-003	32	MILL ST	REX	SingleFamily	C	-5	1890	1,737	\$195,430			\$92,800	\$97,720	\$74,260	\$37,900	0.16
PO-04-22-460-029	33	MILL ST	REX	Colonial/2Sty	C	-5	1920	1,189	\$189,517	\$200,000	4/17/2023	\$88,900	\$94,760	\$47,180	\$68,500	1
PO-04-22-481-002	34	MILL ST	REX	SingleFamily	CD	0	1920	1,118	\$166,184			\$80,180	\$83,090	\$62,310	\$37,900	0.18
PO-04-22-460-028	35	MILL ST	REX	Colonial/2Sty	C	-5	1920	1,396	\$243,926			\$116,290	\$121,960	\$59,190	\$68,500	1
PO-04-22-460-048	39	MILL ST	REX	Tudor	C	0	1920	1,765	\$264,789			\$119,370	\$132,390	\$68,320	\$58,500	0.51
PO-04-22-460-050	43	MILL ST	REX	SingleFamily	C	0	1900	1,723	\$237,910			\$120,090	\$118,960	\$71,410	\$50,000	0.38
PO-04-27-278-014	78	MINNETONKA DR	RVX	Ranch	D	10	1937	611	\$78,895	\$125,000	12/22/2023	\$35,680	\$39,450	\$39,450	\$15,624	0.072
PO-04-27-254-009	6	MOYERS ST	RVX	Other	CD	0	1910	1,762	\$215,019			\$99,340	\$107,510	\$82,300	\$35,910	0.238
PO-04-27-252-008	9	MOYERS ST	RVX	Bungalow	CD	0	1920	1,219	\$200,144			\$93,420	\$100,070	\$49,350	\$35,910	0.242
PO-04-27-254-003	10	MOYERS ST	RVX	Colonial/2Sty	C	0	1930	1,380	\$206,909			\$94,960	\$103,450	\$54,180	\$46,305	0.379
PO-04-27-252-007	11	MOYERS ST	RVX	Bungalow	C	-5	1925	1,806	\$244,960			\$113,020	\$122,480	\$109,160	\$35,910	0.238

PO-04-27-254-002	16	MOYERS ST	RVX	Colonial/2Sty	C	0	1930	1,876	\$276,581			\$124,960	\$138,290	\$68,160	\$46,305	0.331
PO-04-27-251-020	19	MOYERS ST	RVX	Bungalow	CD	0	1940	1,075	\$168,724			\$75,310	\$84,360	\$47,530	\$35,910	0.196
PO-04-27-251-019	21	MOYERS ST	RVX	Bungalow	C	-5	1940	1,626	\$234,980			\$105,180	\$117,490	\$64,200	\$35,910	0.196
PO-04-27-253-009	22	MOYERS ST	RVX	SingleFamily	B	-10	1900	1,682	\$315,975			\$143,460	\$157,990	\$73,330	\$35,910	0.221
PO-04-27-251-018	23	MOYERS ST	RVX	Bungalow	C	-5	1920	1,482	\$181,711			\$80,880	\$90,860	\$42,400	\$35,910	0.206
PO-04-27-251-017	25	MOYERS ST	RVX	Colonial/2Sty	C	10	1903	2,089	\$345,375			\$158,470	\$172,690	\$153,790	\$35,910	0.199
PO-04-27-253-008	28	MOYERS ST	RVX	Colonial/2Sty	C	0	1920	1,835	\$243,110			\$111,330	\$121,560	\$115,940	\$35,910	0.252
PO-04-27-251-016	29	MOYERS ST	RVX	Bungalow	C	10	1920	1,961	\$286,412			\$132,490	\$143,210	\$71,220	\$35,910	0.282
PO-04-27-251-015	31	MOYERS ST	RVX	Colonial/2Sty	C	0	1930	3,010	\$334,088	\$400,000	6/23/2023	\$157,180	\$167,040	\$167,040	\$35,910	0.243
PO-04-27-253-007	32	MOYERS ST	RVX	Colonial/2Sty	C	5	1900	1,969	\$254,963			\$119,270	\$127,480	\$64,580	\$35,910	0.288
PO-04-27-253-006	36	MOYERS ST	RVX	Colonial/2Sty	C	0	1910	1,865	\$255,618			\$120,440	\$127,810	\$77,220	\$35,910	0.288
PO-04-27-253-005	40	MOYERS ST	RVX	Bungalow	C	-5	1890	2,012	\$269,488			\$125,810	\$134,740	\$62,860	\$35,910	0.288
PO-04-27-253-032	42	MOYERS ST	RVX	Ranch	C	-5	1945	1,061	\$181,807			\$86,310	\$90,900	\$54,280	\$35,910	0.252
PO-04-27-253-031	44	MOYERS ST	RVX	Colonial/2Sty	C	10	1998	1,875	\$356,733			\$163,640	\$178,370	\$153,850	\$35,910	0.235
PO-04-27-253-003	46	MOYERS ST	RVX	Bungalow	CD	0	1909	978	\$164,139			\$75,380	\$82,070	\$39,870	\$35,910	0.247
PO-04-27-251-014	49	MOYERS ST	RVX	Bungalow	C	5	1900	1,038	\$196,009			\$90,190	\$98,000	\$48,780	\$35,910	0.221
PO-04-27-176-019	55	MOYERS ST	RVX	Ranch	C	-5	1974	1,338	\$325,510			\$148,490	\$162,760	\$135,730	\$46,305	0.368
PO-04-26-278-002	15	OAKWOOD DR	RXL	Colonial/2Sty	C	10	1986	1,745	\$296,811			\$129,350	\$148,410	\$82,990	\$81,432	0.73
PO-04-26-278-003	25	OAKWOOD DR	RXL	Colonial/2Sty	C	10	1986	2,194	\$386,496			\$168,460	\$193,250	\$108,680	\$102,822	1.31
PO-04-26-179-009	200	OXFORD LAKE DR	R-X1	Colonial/2Sty	C	10	1992	1,991	\$331,491			\$152,730	\$165,750	\$83,130	\$77,011	0.349
PO-04-26-178-025	203	OXFORD LAKE DR	R-X1	Colonial/2Sty	C	10	1978	2,083	\$293,156			\$134,960	\$146,580	\$74,920	\$62,208	0.195
PO-04-26-179-008	206	OXFORD LAKE DR	R-X1	Ranch	C	10	1992	1,578	\$282,017			\$129,560	\$141,010	\$74,660	\$58,419	0.257
PO-04-26-178-024	209	OXFORD LAKE DR	R-X1	Colonial/2Sty	C	10	1979	1,921	\$279,418			\$128,710	\$139,710	\$111,100	\$58,870	0.169
PO-04-26-179-007	212	OXFORD LAKE DR	R-X1	Contemporary	C	10	1992	1,869	\$305,217			\$139,970	\$152,610	\$80,590	\$58,349	0.253
PO-04-26-178-023	215	OXFORD LAKE DR	R-X1	Colonial/2Sty	C	10	1977	2,112	\$290,647			\$133,680	\$145,320	\$74,570	\$58,870	0.169
PO-04-26-179-006	218	OXFORD LAKE DR	R-X1	Colonial/2Sty	C	10	1992	1,592	\$290,692			\$133,450	\$145,350	\$78,490	\$58,349	0.244
PO-04-26-178-022	221	OXFORD LAKE DR	R-X1	Colonial/2Sty	BC	0	1978	1,896	\$314,982			\$144,660	\$157,490	\$77,740	\$59,156	0.177
PO-04-26-179-005	224	OXFORD LAKE DR	R-X1	Contemporary	C	10	1993	1,936	\$314,924			\$144,360	\$157,460	\$82,270	\$57,811	0.242
PO-04-26-178-021	227	OXFORD LAKE DR	R-X1	Ranch	C	10	1978	1,427	\$238,649	\$298,000	3/9/2022	\$110,270	\$119,320	\$115,780	\$58,247	0.185
PO-04-26-179-004	230	OXFORD LAKE DR	R-X1	Ranch	C	10	1992	1,550	\$288,463			\$132,820	\$144,230	\$72,930	\$65,280	0.234
PO-04-26-178-020	233	OXFORD LAKE DR	R-X1	Colonial/2Sty	C	10	1978	1,467	\$228,109	\$240,000	11/18/2021	\$105,570	\$114,050	\$101,620	\$58,247	0.203
PO-04-26-179-003	236	OXFORD LAKE DR	R-X1	Contemporary	C	10	1992	2,048	\$318,640			\$146,460	\$159,320	\$78,230	\$65,280	0.234
PO-04-26-178-019	239	OXFORD LAKE DR	R-X1	Colonial/2Sty	C	10	1978	1,770	\$266,286			\$122,730	\$133,140	\$69,060	\$59,142	0.202
PO-04-26-179-002	242	OXFORD LAKE DR	R-X1	Colonial/2Sty	C	10	1991	1,797	\$276,619	\$325,000	12/22/2021	\$127,180	\$138,310	\$122,530	\$57,600	0.248
PO-04-26-178-018	245	OXFORD LAKE DR	R-X1	Colonial/2Sty	C	10	1977	1,858	\$240,433			\$111,380	\$120,220	\$95,000	\$62,162	0.195
PO-04-26-179-001	248	OXFORD LAKE DR	R-X1	Contemporary	C	10	1992	1,998	\$348,874			\$160,690	\$174,440	\$89,260	\$76,800	0.33
PO-04-26-131-011	254	OXFORD LAKE DR	R-X1	Colonial/2Sty	C	10	1993	1,941	\$327,023			\$150,070	\$163,510	\$128,620	\$64,736	0.289
PO-04-26-130-014	259	OXFORD LAKE DR	R-X1	Colonial/2Sty	C	10	1989	1,682	\$288,679			\$132,690	\$144,340	\$113,570	\$60,415	0.189
PO-04-26-131-010	260	OXFORD LAKE DR	R-X1	CapeCod	BC	0	1993	1,897	\$332,497			\$152,560	\$166,250	\$79,560	\$65,303	0.241
PO-04-26-130-013	263	OXFORD LAKE DR	R-X1	Colonial/2Sty	BC	0	1989	2,070	\$339,234			\$155,290	\$169,620	\$84,270	\$58,097	0.232
PO-04-26-131-009	266	OXFORD LAKE DR	R-X1	Ranch	C	5	1992	1,441	\$290,259			\$133,540	\$145,130	\$74,430	\$63,744	0.238
PO-04-26-130-012	269	OXFORD LAKE DR	R-X1	Colonial/2Sty	C	10	1989	2,178	\$334,298			\$153,130	\$167,150	\$88,280	\$58,229	0.247
PO-04-26-131-008	272	OXFORD LAKE DR	R-X1	CapeCod	C	10	1992	1,864	\$309,533			\$142,280	\$154,770	\$78,830	\$64,251	0.243
PO-04-26-130-011	275	OXFORD LAKE DR	R-X1	Colonial/2Sty	BC	0	1989	2,027	\$332,528			\$152,170	\$166,260	\$137,630	\$55,651	0.222

PO-04-26-131-007	278	OXFORD LAKE DR	R-X1	Colonial/2Sty	C	10	1993	1,969	\$326,567	\$346,000	5/14/2021	\$149,920	\$163,280	\$144,490	\$64,443	0.232
PO-04-26-131-006	284	OXFORD LAKE DR	R-X1	Colonial/2Sty	C	10	1992	1,866	\$316,187			\$145,220	\$158,090	\$82,190	\$64,443	0.244
PO-04-26-131-005	290	OXFORD LAKE DR	R-X1	CapeCod	C	10	1992	1,701	\$318,882			\$146,310	\$159,440	\$134,560	\$64,443	0.256
PO-04-26-131-004	296	OXFORD LAKE DR	R-X1	Colonial/2Sty	C	10	1992	1,962	\$331,471			\$152,060	\$165,740	\$85,510	\$64,443	0.244
PO-04-26-131-003	302	OXFORD LAKE DR	R-X1	CapeCod	C	10	1992	1,831	\$314,016			\$144,340	\$157,010	\$76,670	\$64,443	0.244
PO-04-26-131-002	308	OXFORD LAKE DR	R-X1	Colonial/2Sty	C	10	1994	2,107	\$343,693			\$157,530	\$171,850	\$123,280	\$64,443	0.244
PO-04-26-131-001	314	OXFORD LAKE DR	R-X1	Colonial/2Sty	BC	0	1992	2,010	\$397,868			\$181,880	\$198,930	\$96,300	\$64,443	0.244
PO-04-26-202-005	320	OXFORD LAKE DR	R-L1	Colonial/2Sty	BC	0	2002	2,523	\$341,410			\$158,460	\$170,710	\$133,420	\$36,060	0.262
PO-04-26-202-004	326	OXFORD LAKE DR	R-L1	Ranch	BC	0	2005	1,670	\$294,486	\$370,000	8/20/2021	\$135,820	\$147,240	\$129,670	\$36,707	0.267
PO-04-26-202-003	332	OXFORD LAKE DR	R-L1	SingleFamily	BC	0	1999	1,910	\$312,608			\$144,950	\$156,300	\$118,320	\$34,412	0.249
PO-04-26-202-002	338	OXFORD LAKE DR	R-L1	Ranch	BC	0	1999	1,898	\$282,930	\$330,000	7/7/2021	\$130,760	\$141,470	\$124,990	\$34,064	0.235
PO-04-26-202-001	344	OXFORD LAKE DR	R-L1	Colonial/2Sty	B	-10	2003	1,953	\$330,341			\$153,130	\$165,170	\$146,310	\$36,075	0.258
PO-04-23-351-002	402	OXFORD RD	RDD		D	0	0	0	\$117,350			\$65,190	\$58,680	\$58,680	\$117,350	4.71
PO-04-27-204-019	1	PARK ST	RDX	TwnHse/Duplex	C	0	1930	1,781	\$194,476			\$95,580	\$97,240	\$59,490	\$35,910	0.27
PO-04-27-252-004	4	PARK ST	RVX	SingleFamily	C	-5	1865	1,359	\$208,845			\$100,230	\$104,420	\$86,070	\$35,910	0.281
PO-04-27-204-018	5	PARK ST	RDX	TwnHse/Duplex	C	10	1925	1,776	\$205,556			\$99,190	\$102,780	\$55,290	\$15,624	0.095
PO-04-27-252-003	6	PARK ST	RVX	SingleFamily	C	0	1890	1,346	\$190,666			\$90,130	\$95,330	\$92,550	\$35,910	0.274
PO-04-27-204-010	9	PARK ST	RVX	Colonial/2Sty	CD	0	1900	1,392	\$181,708			\$82,550	\$90,850	\$71,360	\$35,910	0.189
PO-04-27-252-002	10	PARK ST	RVX	Colonial/2Sty	C	-5	1872	2,086	\$311,601	\$342,500	8/18/2021	\$145,320	\$155,800	\$152,580	\$46,305	0.348
PO-04-27-204-009	11	PARK ST	RVX	Colonial/2Sty	C	-5	1920	1,119	\$148,824			\$69,900	\$74,410	\$67,960	\$15,624	0.097
PO-04-27-204-008	15	PARK ST	RVX	Colonial/2Sty	C	0	1900	1,330	\$207,784			\$97,210	\$103,890	\$53,990	\$46,305	0.411
PO-04-27-252-001	16	PARK ST	RVX	SingleFamily	CD	0	1890	2,064	\$224,478			\$102,780	\$112,240	\$51,660	\$35,910	0.188
PO-04-27-251-010	18	PARK ST	RVX	Bungalow	C	5	1920	1,456	\$221,159			\$99,630	\$110,580	\$102,660	\$35,910	0.169
PO-04-27-203-026	21	PARK ST	RVX	Colonial/2Sty	C	-5	1850	1,725	\$260,004			\$119,550	\$130,000	\$109,300	\$46,305	0.342
PO-04-27-251-009	22	PARK ST	RVX	Colonial/2Sty	C	10	1900	1,716	\$295,134			\$138,690	\$147,570	\$64,170	\$35,910	0.238
PO-04-27-251-008	26	PARK ST	RVX	Colonial/2Sty	C	5	1900	1,806	\$245,930			\$114,470	\$122,970	\$68,380	\$35,910	0.245
PO-04-27-203-022	27	PARK ST	RVX	SingleFamily	C	10	1900	2,919	\$428,346			\$194,600	\$214,170	\$124,850	\$59,325	0.544
PO-04-27-203-021	31	PARK ST	RVX	Ranch	C	5	1997	2,037	\$450,894			\$208,060	\$225,450	\$144,080	\$46,305	0.459
PO-04-27-251-007	32	PARK ST	RVX	Bungalow	C	10	1920	2,688	\$506,747	\$443,000	11/7/2022	\$229,360	\$253,370	\$240,820	\$46,305	0.301
PO-04-27-203-020	35	PARK ST	RVX	SingleFamily	C	-5	1890	1,752	\$232,341			\$107,440	\$116,170	\$57,910	\$46,305	0.47
PO-04-27-251-006	36	PARK ST	RVX	Colonial/2Sty	C	10	1928	2,114	\$343,100			\$160,990	\$171,550	\$114,090	\$35,910	0.246
PO-04-27-203-019	39	PARK ST	RVX	SingleFamily	C	-5	1920	1,296	\$198,636			\$93,030	\$99,320	\$77,010	\$35,910	0.273
PO-04-27-251-005	40	PARK ST	RVX	Bungalow	C	10	1928	1,766	\$320,634			\$146,650	\$160,320	\$144,540	\$46,305	0.335
PO-04-27-203-018	41	PARK ST	RVX	SingleFamily	C	-5	1890	1,409	\$193,194			\$90,710	\$96,600	\$49,330	\$35,910	0.281
PO-04-27-251-022	42	PARK ST	RVX	Colonial/2Sty	C	10	1920	2,060	\$286,704			\$130,160	\$143,350	\$126,020	\$46,305	0.369
PO-04-27-203-017	43	PARK ST	RVX	Bungalow	C	-5	1920	1,378	\$215,409			\$99,670	\$107,700	\$64,600	\$35,910	0.267
PO-04-27-251-003	44	PARK ST	RVX	Bungalow	C	10	1920	1,404	\$257,048			\$114,160	\$128,520	\$58,140	\$35,910	0.162
PO-04-27-203-016	45	PARK ST	RVX	Colonial/2Sty	C	0	1920	2,194	\$327,445			\$149,290	\$163,720	\$136,930	\$35,910	0.178
PO-04-27-203-015	47	PARK ST	RVX	Other	C	-5	1900	1,608	\$194,248			\$86,660	\$97,120	\$44,910	\$35,910	0.182
PO-04-27-251-002	48	PARK ST	RVX	Colonial/2Sty	C	10	1900	1,544	\$234,057			\$106,770	\$117,030	\$93,890	\$35,910	0.181
PO-04-27-128-023	49	PARK ST	RVX	Colonial/2Sty	C	0	1908	2,910	\$361,595			\$164,970	\$180,800	\$114,390	\$35,910	0.229
PO-04-27-128-022	51	PARK ST	RVX	Ranch	C	-5	1969	975	\$188,504			\$83,790	\$94,250	\$87,970	\$35,910	0.15
PO-04-27-129-016	56	PARK ST	RVX	SingleFamily	C	0	1900	1,854	\$266,968			\$122,450	\$133,480	\$67,180	\$35,910	0.217
PO-04-27-128-018	57	PARK ST	RVX	Bungalow	CD	0	1928	1,508	\$204,042			\$92,190	\$102,020	\$52,880	\$46,305	0.353

PO-04-27-129-017	62	PARK ST	RVX	SingleFamily	C	0	1877	1,501	\$202,295			\$94,070	\$101,150	\$97,480	\$35,910	0.276
PO-04-27-128-017	63	PARK ST	RVX	Ranch	C	5	1971	1,830	\$389,770			\$177,070	\$194,890	\$111,100	\$59,325	0.547
PO-04-27-128-016	67	PARK ST	RVX	Colonial/2Sty	C	10	1890	1,865	\$276,388			\$125,520	\$138,190	\$69,970	\$46,305	0.437
PO-04-27-129-007	70	PARK ST	RVX	Colonial/2Sty	C	-5	1884	1,357	\$206,521	\$225,000	6/15/2022	\$92,900	\$103,260	\$97,540	\$35,910	0.181
PO-04-27-128-015	73	PARK ST	RVX	CapeCod	C	0	1940	1,770	\$281,422			\$128,020	\$140,710	\$103,880	\$46,305	0.46
PO-04-27-129-019	74	PARK ST	RVX	SingleFamily	C	0	1913	1,330	\$201,257			\$93,650	\$100,630	\$87,460	\$35,910	0.241
PO-04-27-128-014	79	PARK ST	RVX	SingleFamily	C	5	1920	1,632	\$261,319			\$117,140	\$130,660	\$66,200	\$59,325	0.562
PO-04-27-129-018	80	PARK ST	RVX	Bungalow	C	0	1920	1,338	\$216,366			\$98,300	\$108,180	\$57,490	\$46,305	0.318
PO-04-27-128-013	81	PARK ST	RVX	Ranch	C	-5	1965	1,031	\$197,043			\$91,330	\$98,520	\$59,670	\$35,910	0.245
PO-04-27-129-004	88	PARK ST	RVX	Bungalow	C	-5	1929	934	\$156,034	\$205,000	5/21/2021	\$69,940	\$78,020	\$73,430	\$35,910	0.182
PO-04-27-129-003	90	PARK ST	RVX	Ranch	CD	0	1935	789	\$150,544			\$64,990	\$75,270	\$38,850	\$35,910	0.164
PO-04-27-129-002	92	PARK ST	RVX	Colonial/2Sty	C	0	1900	1,786	\$238,527			\$105,970	\$119,260	\$89,680	\$35,910	0.184
PO-04-27-129-028	96	PARK ST	RVX	SingleFamily	CD	0	1910	1,415	\$177,378	\$171,000	7/9/2021	\$83,120	\$88,690	\$85,800	\$35,910	0.24
PO-04-27-129-027	100	PARK ST	RVX	Ranch	C	-5	2016	1,608	\$356,709			\$165,490	\$178,350	\$133,720	\$35,910	0.241
PO-04-27-129-026	102	PARK ST	RVX	Colonial/2Sty	C	0	2017	1,606	\$357,690			\$165,920	\$178,850	\$158,950	\$35,910	0.24
PO-04-27-127-019	103	PARK ST	RVX	CapeCod	C	0	1989	1,450	\$377,601			\$176,520	\$188,800	\$180,340	\$35,910	0.268
PO-04-27-129-025	104	PARK ST	RVX	Ranch	C	-5	2017	1,443	\$336,690			\$156,340	\$168,350	\$158,060	\$35,910	0.241
PO-04-27-127-012	105	PARK ST	RVX	BiLevel	C	5	1974	1,570	\$248,727			\$117,100	\$124,360	\$67,590	\$35,910	0.297
PO-04-27-129-024	106	PARK ST	RVX	Colonial/2Sty	C	0	2017	1,638	\$342,847			\$159,280	\$171,420	\$152,170	\$35,910	0.244
PO-04-27-127-011	109	PARK ST	RVX	SingleFamily	C	5	1920	2,330	\$320,404			\$145,990	\$160,200	\$78,870	\$64,050	1.498
PO-04-27-129-022	110	PARK ST	RVX	Ranch	C	0	2018	1,606	\$385,361			\$178,740	\$192,680	\$146,640	\$35,910	0.245
PO-04-27-129-029	112	PARK ST	RVX	Ranch	C	-5	2018	1,443	\$376,631			\$183,130	\$188,320	\$144,120	\$59,325	0.511
PO-04-27-229-014	6	PEARL ST	REX	Bungalow	CD	0	1940	560	\$104,952			\$47,370	\$52,480	\$26,400	\$37,900	0.13
PO-04-27-231-004	12	PEARL ST	REX	SingleFamily	CD	0	1940	1,524	\$188,176			\$94,050	\$94,090	\$52,500	\$37,900	0.24
PO-04-27-233-008	22	PEARL ST	REX	Ranch	C	5	1966	1,106	\$257,759			\$126,550	\$128,880	\$74,010	\$50,000	0.34
PO-04-27-279-030	23	PEARL ST	REX	Ranch	D	10	1943	566	\$76,685			\$37,330	\$38,340	\$19,570	\$19,500	0.09
PO-04-27-233-009	24	PEARL ST	REX	Colonial/2Sty	C	-5	1910	1,238	\$185,882			\$90,400	\$92,940	\$46,010	\$50,000	0.32
PO-04-27-279-031	25	PEARL ST	REX	Colonial/2Sty	CD	0	1900	1,099	\$161,548	\$170,000	11/28/2023	\$77,520	\$80,770	\$80,770	\$50,000	0.3
PO-04-27-233-003	28	PEARL ST	REX	Bungalow	CD	0	1937	1,309	\$210,297			\$102,830	\$105,150	\$59,340	\$37,900	0.18
PO-04-27-279-032	29	PEARL ST	REX	Colonial/2Sty	CD	0	1910	1,815	\$210,010			\$100,750	\$105,010	\$105,010	\$50,000	0.31
PO-04-27-279-033	31	PEARL ST	REX	Ranch	C	-5	1955	1,671	\$238,136			\$121,630	\$119,070	\$68,260	\$37,900	0.29
PO-04-27-233-004	32	PEARL ST	REX	SingleFamily	C	-5	1910	966	\$157,234			\$76,020	\$78,620	\$39,830	\$37,900	0.18
PO-04-27-279-034	35	PEARL ST	REX	Bungalow	C	-5	1925	1,396	\$216,295			\$105,000	\$108,150	\$53,410	\$50,000	0.34
PO-04-27-233-005	36	PEARL ST	REX	Ranch	CD	0	1900	1,170	\$173,955			\$90,480	\$86,980	\$51,150	\$37,900	0.28
PO-04-27-279-035	37	PEARL ST	REX	Colonial/2Sty	CD	0	1920	1,465	\$180,015			\$88,900	\$90,010	\$43,580	\$37,900	0.21
PO-04-27-233-006	38	PEARL ST	REX	Colonial/2Sty	CD	0	1911	1,284	\$166,588			\$53,670	\$83,290	\$43,530	\$37,900	0.25
PO-04-27-279-036	39	PEARL ST	RDX	TwnHse/Duplex	C	-5	1925	1,838	\$203,542			\$97,130	\$101,770	\$83,910	\$37,900	0.2
PO-04-27-233-007	42	PEARL ST	REX	SingleFamily	C	-5	1927	1,804	\$239,718			\$120,730	\$119,860	\$98,370	\$37,900	0.23
PO-04-27-279-047	45	PEARL ST	REX	Colonial/2Sty	C	-5	1920	1,820	\$236,544			\$120,160	\$118,270	\$118,270	\$50,000	0.47
PO-04-27-279-048	49	PEARL ST	REX	Ranch	CD	0	1930	1,399	\$200,111			\$98,710	\$100,060	\$46,440	\$50,000	0.41
PO-04-26-151-003	50	PEARL ST	REX	Bungalow	C	0	1912	1,875	\$267,819			\$132,240	\$133,910	\$70,180	\$37,900	0.22
PO-04-27-279-039	51	PEARL ST	REX	Ranch	CD	0	1930	800	\$130,131			\$67,110	\$65,070	\$63,450	\$37,900	0.28
PO-04-27-279-040	53	PEARL ST	REX	Ranch	C	-5	1950	1,035	\$210,266			\$105,030	\$105,130	\$62,250	\$50,000	0.4
PO-04-26-152-003	60	PEARL ST	REX	Ranch	C	-5	1960	1,017	\$198,643			\$99,380	\$99,320	\$57,600	\$50,000	0.38

PO-04-26-151-005	64	PEARL ST	REX	Ranch	C	-5	1955	1,125	\$188,073			\$97,090	\$94,040	\$94,040	\$37,900	0.29
PO-04-26-151-006	66	PEARL ST	REX	Colonial/2Sty	C	5	1975	1,737	\$284,097	\$280,000	4/28/2023	\$140,060	\$142,050	\$142,050	\$37,900	0.19
PO-04-26-151-007	68	PEARL ST	REX	SingleFamily	C	0	1838	1,359	\$211,427			\$104,690	\$105,710	\$84,550	\$37,900	0.19
PO-04-26-151-008	70	PEARL ST	REX	Ranch	C	0	1993	1,264	\$235,505			\$0	\$117,750	\$61,510	\$37,900	0.18
PO-04-26-151-002	72	PEARL ST	REX	Ranch	CD	0	1940	1,055	\$168,167			\$81,380	\$84,080	\$48,040	\$50,000	0.33
PO-04-26-152-004	75	PEARL ST	REX	BiLevel	C	5	1976	1,644	\$266,652			\$131,890	\$133,330	\$73,950	\$37,900	0.21
PO-04-26-427-013	65	PINEVIEW CT	RXL	Ranch	C	10	1986	1,644	\$353,769			\$154,240	\$176,880	\$92,800	\$73,899	0.32
PO-04-26-427-014	75	PINEVIEW CT	RXL	Colonial/2Sty	C	10	1984	1,926	\$294,615			\$128,500	\$147,310	\$81,450	\$68,422	0.33
PO-04-26-427-015	85	PINEVIEW CT	RXL	Ranch	C	10	1988	1,838	\$375,839			\$163,820	\$187,920	\$100,640	\$74,900	0.34
PO-04-26-427-016	95	PINEVIEW CT	RXL	Ranch	C	10	1986	1,619	\$311,961			\$135,990	\$155,980	\$92,790	\$73,419	0.42
PO-04-26-427-017	105	PINEVIEW CT	RXL	Ranch	C	10	1987	1,608	\$343,987			\$149,980	\$171,990	\$94,900	\$82,555	0.36
PO-04-22-386-010	2	PLEASANT ST	RDX	TwnHse/Duplex	C	0	2018	2,587	\$433,122			\$207,590	\$216,560	\$172,040	\$35,910	0.235
PO-04-22-386-009	6	PLEASANT ST	RDX	TwnHse/Duplex	C	0	1900	1,100	\$225,188	\$202,500	7/28/2021	\$100,960	\$112,590	\$102,380	\$35,910	0.114
PO-04-22-385-009	7	PLEASANT ST	RVX	SingleFamily	C	-5	1870	1,470	\$218,963			\$96,640	\$109,480	\$58,300	\$35,910	0.164
PO-04-22-386-008	10	PLEASANT ST	RVX	SingleFamily	CD	0	1925	1,438	\$184,868			\$77,500	\$92,430	\$74,490	\$35,910	0.114
PO-04-22-385-008	11	PLEASANT ST	RVX	Ranch	C	-5	1900	1,497	\$198,734			\$93,810	\$99,370	\$56,120	\$35,910	0.258
PO-04-22-386-012	12	PLEASANT ST	RVX	Colonial/2Sty	C	5	1920	1,884	\$252,719			\$109,180	\$126,360	\$64,870	\$35,910	0.102
PO-04-22-386-006	14	PLEASANT ST	RVX	Ranch	C	-5	1924	962	\$211,955			\$96,470	\$105,980	\$97,180	\$35,910	0.189
PO-04-22-386-005	16	PLEASANT ST	RVX	Bungalow	C	-5	1940	1,136	\$169,851			\$76,540	\$84,930	\$46,760	\$35,910	0.199
PO-04-22-385-007	17	PLEASANT ST	RVX	Ranch	C	-5	1900	1,827	\$316,107			\$142,980	\$158,050	\$150,120	\$46,305	0.3
PO-04-22-386-004	18	PLEASANT ST	RVX	Colonial/2Sty	C	-5	1920	1,382	\$240,430			\$108,910	\$120,220	\$109,200	\$35,910	0.179
PO-04-22-384-004	19	PLEASANT ST	RVX	SingleFamily	C	0	1930	1,672	\$243,708			\$109,460	\$121,850	\$99,900	\$35,910	0.2
PO-04-22-386-003	22	PLEASANT ST	RVX	Bungalow	C	-5	1929	1,422	\$218,603	\$248,000	6/25/2021	\$98,660	\$109,300	\$103,590	\$35,910	0.17
PO-04-22-384-002	25	PLEASANT ST	RVX	Colonial/2Sty	C	0	1920	1,712	\$251,627			\$114,150	\$125,810	\$61,150	\$35,910	0.23
PO-04-22-384-012	27	PLEASANT ST	CME		D	0	0	0	\$0			\$0	\$0	\$0	\$0	0.43
PO-04-22-386-001	30	PLEASANT ST	RDX	MultiTenant	C	-5	1920	1,422	\$204,183			\$99,670	\$102,090	\$56,290	\$35,910	0.273
PO-04-22-379-018	57	PLEASANT ST	RVX	Ranch	D	10	1910	480	\$98,480			\$38,990	\$49,240	\$24,210	\$35,910	0.13
PO-04-22-380-009	58	PLEASANT ST	RVX	Bungalow	CD	0	1930	1,459	\$203,718			\$90,320	\$101,860	\$49,740	\$46,305	0.317
PO-04-22-379-013	59	PLEASANT ST	RVX	Ranch	CD	0	1940	1,020	\$159,172			\$75,250	\$79,590	\$45,160	\$35,910	0.285
PO-04-22-379-012	61	PLEASANT ST	RVX	SingleFamily	C	-5	1900	1,152	\$177,254			\$82,510	\$88,630	\$74,170	\$46,305	0.414
PO-04-22-380-008	62	PLEASANT ST	RVX	SingleFamily	CD	0	1930	1,221	\$184,459	\$220,000	7/5/2022	\$83,360	\$92,230	\$87,520	\$46,305	0.355
PO-04-22-380-004	64	PLEASANT ST	RVX	SingleFamily	C	0	1920	1,426	\$262,990			\$114,570	\$131,500	\$120,290	\$35,910	0.113
PO-04-22-379-011	65	PLEASANT ST	RVX	SingleFamily	CD	0	1900	1,086	\$159,380			\$74,200	\$79,690	\$65,640	\$46,305	0.403
PO-04-22-380-003	66	PLEASANT ST	RVX	Bungalow	CD	0	1940	1,104	\$147,324			\$66,980	\$73,660	\$39,350	\$15,624	0.079
PO-04-22-379-010	67	PLEASANT ST	RVX	Bungalow	CD	0	1910	880	\$127,894			\$56,610	\$63,950	\$52,320	\$15,624	0.066
PO-04-22-380-002	68	PLEASANT ST	RVX	Bungalow	CD	0	1940	586	\$105,281			\$42,390	\$52,640	\$26,700	\$35,910	0.116
PO-04-22-379-009	69	PLEASANT ST	RVX	SingleFamily	C	-5	1910	1,069	\$160,065			\$75,230	\$80,030	\$70,300	\$15,624	0.094
PO-04-22-379-008	73	PLEASANT ST	RVX	SingleFamily	C	0	1900	1,691	\$228,655			\$103,260	\$114,330	\$108,420	\$35,910	0.156
PO-04-27-201-001	8	PONTIAC ST	RDX	MultiTenant	C	0	1936	4,680	\$414,331			\$197,750	\$207,170	\$179,550	\$35,910	0.283
PO-04-27-126-016	9	PONTIAC ST	RVX	Colonial/2Sty	C	10	1920	2,165	\$323,700			\$147,180	\$161,850	\$153,390	\$35,910	0.195
PO-04-27-126-017	11	PONTIAC ST	RVX	Bungalow	C	-5	1925	1,991	\$263,204			\$116,940	\$131,600	\$61,450	\$35,910	0.166
PO-04-27-201-030	12	PONTIAC ST	RVX	SingleFamily	C	0	1925	1,157	\$175,282	\$153,000	12/13/2023	\$76,130	\$87,640	\$87,640	\$35,910	0.135
PO-04-27-126-018	13	PONTIAC ST	RVX	Colonial/2Sty	C	0	1914	1,492	\$201,372			\$90,360	\$100,690	\$47,860	\$35,910	0.208
PO-04-27-201-015	14	PONTIAC ST	RVX	SingleFamily	C	5	1905	1,308	\$202,379			\$87,380	\$101,190	\$45,110	\$35,910	0.131

PO-04-27-126-019	15	PONTIAC ST	RVX	Colonial/2Sty	C	-5	1920	2,094	\$287,708			\$130,680	\$143,850	\$69,370	\$46,305	0.443
PO-04-27-201-016	16	PONTIAC ST	RVX	Colonial/2Sty	C	0	1888	1,441	\$210,664			\$99,380	\$105,330	\$100,490	\$35,910	0.296
PO-04-27-126-044	17	PONTIAC ST	RVX	Colonial/2Sty	C	-5	1920	1,968	\$267,563			\$125,520	\$133,780	\$116,900	\$35,910	0.296
PO-04-27-201-017	18	PONTIAC ST	RVX	SingleFamily	C	0	1910	1,196	\$203,652			\$93,430	\$101,830	\$52,620	\$46,305	0.388
PO-04-27-126-045	19	PONTIAC ST	RVX	Colonial/2Sty	C	-5	1920	1,651	\$292,253	\$327,100	3/21/2022	\$134,770	\$146,130	\$141,500	\$46,305	0.376
PO-04-27-201-033	20	PONTIAC ST	RVX	SingleFamily	C	0	1918	1,252	\$200,416			\$86,330	\$100,210	\$50,520	\$35,910	0.19
PO-04-27-126-037	21	PONTIAC ST	RVX	SingleFamily	C	0	1904	1,603	\$224,905			\$101,600	\$112,450	\$88,120	\$35,910	0.223
PO-04-27-201-019	22	PONTIAC ST	RVX	SingleFamily	C	0	1920	1,319	\$197,803			\$85,670	\$98,900	\$45,330	\$35,910	0.137
PO-04-27-126-038	25	PONTIAC ST	RVX	Colonial/2Sty	C	-5	1920	2,018	\$250,675			\$111,080	\$125,340	\$58,090	\$35,910	0.181
PO-04-27-128-026	31	PONTIAC ST	RVX	SingleFamily	C	0	1920	2,640	\$321,112			\$144,110	\$160,560	\$76,880	\$46,305	0.31
PO-04-27-128-027	33	PONTIAC ST	RDX	TwnHse/Duplex	C	0	1976	2,028	\$282,638			\$134,000	\$141,320	\$74,660	\$35,910	0.204
PO-04-27-203-011	36	PONTIAC ST	RVX	Bungalow	C	-10	1920	1,187	\$167,819			\$73,740	\$83,910	\$38,280	\$35,910	0.161
PO-04-27-203-012	38	PONTIAC ST	RVX	Bungalow	CD	0	1920	1,204	\$204,593			\$92,030	\$102,300	\$75,350	\$35,910	0.2
PO-04-27-128-019	39	PONTIAC ST	RVX	SingleFamily	C	5	1885	1,623	\$265,878			\$124,350	\$132,940	\$127,500	\$35,910	0.282
PO-04-27-203-013	42	PONTIAC ST	RVX	SingleFamily	C	-5	1920	1,208	\$172,270			\$80,820	\$86,140	\$82,710	\$35,910	0.247
PO-04-27-128-020	43	PONTIAC ST	RVX	SingleFamily	C	-5	1900	1,953	\$254,176			\$116,560	\$127,090	\$121,490	\$35,910	0.248
PO-04-27-128-021	45	PONTIAC ST	RVX	SingleFamily	C	0	1900	1,306	\$202,451			\$89,970	\$101,230	\$81,960	\$35,910	0.207
PO-04-27-203-014	46	PONTIAC ST	RVX	SingleFamily	C	-5	1929	1,139	\$171,489	\$235,000	10/20/2022	\$74,130	\$85,740	\$77,830	\$35,910	0.136
PO-04-27-129-012	51	PONTIAC ST	RVX	SingleFamily	C	0	1910	1,332	\$207,496			\$93,730	\$103,750	\$81,460	\$35,910	0.203
PO-04-27-129-013	53	PONTIAC ST	RVX	SingleFamily	C	0	1900	1,563	\$229,736			\$100,960	\$114,870	\$56,390	\$35,910	0.156
PO-04-27-176-016	55	PONTIAC ST	RVX	Ranch	C	0	1920	1,274	\$233,309			\$110,220	\$116,650	\$114,310	\$35,910	0.275
PO-04-27-176-017	59	PONTIAC ST	RVX	Colonial/2Sty	C	5	1909	1,953	\$280,781			\$128,850	\$140,390	\$67,120	\$46,305	0.417
PO-04-27-251-012	60	PONTIAC ST	RVX	Colonial/2Sty	C	10	1900	2,242	\$346,892			\$155,730	\$173,450	\$116,990	\$46,305	0.348
PO-04-27-176-018	61	PONTIAC ST	RVX	Colonial/2Sty	BC	0	2017	2,610	\$640,216			\$293,460	\$320,110	\$285,840	\$46,305	0.43
PO-04-27-253-001	62	PONTIAC ST	RVX	Colonial/2Sty	C	0	1910	1,460	\$211,146			\$95,210	\$105,570	\$50,800	\$35,910	0.187
PO-04-27-176-014	63	PONTIAC ST	RVX	Colonial/2Sty	C	5	1900	1,856	\$255,303			\$119,530	\$127,650	\$61,340	\$35,910	0.276
PO-04-27-176-006	67	PONTIAC ST	RVX	Colonial/2Sty	C	5	1894	2,006	\$304,515	\$270,000	8/30/2023	\$136,900	\$152,260	\$152,260	\$46,305	0.328
PO-04-27-253-002	68	PONTIAC ST	RVX	Colonial/2Sty	C	5	1906	1,534	\$213,560			\$99,910	\$106,780	\$52,390	\$35,910	0.29
PO-04-27-253-011	70	PONTIAC ST	RVX	Bungalow	C	0	1913	1,145	\$177,664			\$81,320	\$88,830	\$45,250	\$35,910	0.242
PO-04-27-176-007	71	PONTIAC ST	RVX	Colonial/2Sty	C	0	1900	1,332	\$199,070	\$239,000	8/7/2023	\$98,930	\$99,540	\$99,540	\$35,910	0.267
PO-04-27-253-012	74	PONTIAC ST	RVX	Colonial/2Sty	C	0	1914	1,424	\$232,817			\$107,560	\$116,410	\$110,620	\$46,305	0.481
PO-04-27-253-013	78	PONTIAC ST	RVX	Ranch	C	5	1956	2,111	\$317,145			\$148,010	\$158,570	\$110,340	\$46,305	0.479
PO-04-27-253-014	82	PONTIAC ST	RVX	Ranch	C	0	1955	950	\$215,175			\$101,060	\$107,590	\$62,460	\$46,305	0.478
PO-04-27-253-015	84	PONTIAC ST	RVX	Colonial/2Sty	C	5	1900	1,664	\$238,423			\$105,970	\$119,210	\$62,630	\$46,305	0.306
PO-04-27-253-016	86	PONTIAC ST	RVX	CapeCod	C	5	1955	1,538	\$268,333	\$257,000	4/9/2021	\$124,730	\$134,170	\$130,960	\$46,305	0.378
PO-04-27-176-008	87	PONTIAC ST	RVX	Ranch	C	0	1910	1,012	\$172,668			\$75,160	\$86,330	\$46,080	\$59,325	0.635
PO-04-27-253-017	90	PONTIAC ST	RVX	CapeCod	C	5	1940	1,784	\$315,323			\$141,640	\$157,660	\$96,730	\$59,325	0.612
PO-04-27-253-029	100	PONTIAC ST	RVX	Ranch	C	5	1999	1,407	\$311,307			\$140,220	\$155,650	\$123,150	\$46,305	0.306
PO-04-27-176-009	105	PONTIAC ST	CME		D	0	0	0	\$172,246			\$0	\$0	\$0	\$172,246	11.03
PO-04-27-253-030	106	PONTIAC ST	RVX	Ranch	C	5	1949	1,554	\$275,684			\$125,270	\$137,840	\$110,850	\$59,325	0.714
PO-04-27-253-019	110	PONTIAC ST	RVX	Ranch	C	5	1959	1,575	\$359,425			\$162,720	\$179,710	\$104,680	\$59,325	0.51
PO-04-27-253-020	130	PONTIAC ST	RVX	Colonial/2Sty	C	0	1920	1,558	\$258,961			\$117,890	\$129,480	\$73,370	\$59,325	0.651
PO-04-27-253-026	150	PONTIAC ST	CME		D	0	0	0	\$0			\$0	\$0	\$0	\$0	7.5
PO-04-22-479-004	18	POWELL ST	REX	Bungalow	CD	0	1920	1,287	\$160,431			\$81,040	\$80,220	\$41,250	\$37,900	0.23

PO-04-22-479-003	22	POWELL ST	REX	Bungalow	CD	0	1946	1,170	\$149,690			\$73,860	\$74,850	\$42,190	\$37,900	0.2
PO-04-22-479-002	24	POWELL ST	REX	Ranch	CD	0	1930	1,156	\$156,515			\$75,130	\$78,260	\$70,850	\$37,900	0.17
PO-04-22-479-001	30	POWELL ST	REX	Bungalow	CD	0	1900	1,378	\$211,979	\$296,000	10/16/2023	\$104,250	\$105,990	\$105,990	\$58,500	0.68
PO-04-22-480-002	60	POWELL ST	REX	Ranch	CD	0	1920	1,121	\$153,592			\$71,670	\$76,800	\$53,230	\$37,900	0.17
PO-04-22-480-003	62	POWELL ST	REX	SingleFamily	C	-5	1900	858	\$142,190			\$70,580	\$71,100	\$37,680	\$37,900	0.21
PO-04-22-480-004	64	POWELL ST	REX	Bungalow	CD	0	1940	1,205	\$198,812			\$100,500	\$99,410	\$89,170	\$37,900	0.29
PO-04-22-480-005	66	POWELL ST	REX	Ranch	D	10	1880	1,107	\$155,423			\$79,070	\$77,710	\$38,320	\$37,900	0.25
PO-04-22-480-020	70	POWELL ST	REX	Ranch	C	10	2004	1,399	\$332,223			\$162,990	\$166,110	\$152,580	\$50,000	0.34
PO-04-22-480-021	74	POWELL ST	REX	Ranch	C	10	2004	1,413	\$317,866			\$160,310	\$158,930	\$129,940	\$37,900	0.29
PO-04-26-102-001	7	SCRIPTER CT	KSP	Colonial/2Sty	BC	0	2019	2,269	\$422,103			\$174,130	\$211,050	\$182,830	\$50,023	0.3
PO-04-26-102-002	11	SCRIPTER CT	KSP	Colonial/2Sty	BC	0	2019	2,226	\$399,414	\$445,000	2/13/2023	\$164,750	\$199,710	\$199,710	\$50,023	0.17
PO-04-26-102-016	12	SCRIPTER CT	KSP	Colonial/2Sty	BC	0	2019	2,325	\$393,252			\$162,340	\$196,630	\$170,450	\$50,023	0.21
PO-04-26-102-003	15	SCRIPTER CT	KSP	Colonial/2Sty	BC	0	2019	2,186	\$418,355			\$170,290	\$209,180	\$181,780	\$50,023	0.17
PO-04-26-102-015	16	SCRIPTER CT	KSP	Colonial/2Sty	BC	0	2019	2,666	\$434,076			\$178,800	\$217,040	\$187,740	\$50,023	0.17
PO-04-26-102-004	19	SCRIPTER CT	KSP	Colonial/2Sty	BC	0	2018	2,681	\$437,940			\$180,270	\$218,970	\$189,280	\$50,023	0.17
PO-04-26-102-014	20	SCRIPTER CT	KSP	Colonial/2Sty	BC	0	2019	2,267	\$394,258			\$162,850	\$197,130	\$170,990	\$50,023	0.17
PO-04-26-102-005	21	SCRIPTER CT	KSP	Colonial/2Sty	BC	0	2019	2,755	\$455,508			\$187,410	\$227,750	\$196,780	\$50,023	0.17
PO-04-26-102-013	24	SCRIPTER CT	KSP	Colonial/2Sty	BC	0	2019	2,206	\$412,129			\$170,000	\$206,060	\$178,500	\$50,023	0.17
PO-04-26-102-006	25	SCRIPTER CT	KSP	Colonial/2Sty	BC	0	2019	2,744	\$451,667			\$186,290	\$225,830	\$195,600	\$50,023	0.17
PO-04-26-102-012	28	SCRIPTER CT	KSP	Ranch	C	10	2018	1,724	\$322,796			\$134,160	\$161,400	\$140,860	\$50,023	0.17
PO-04-26-102-007	29	SCRIPTER CT	KSP	Colonial/2Sty	BC	0	2020	2,268	\$412,871	\$450,000	5/17/2022	\$170,090	\$206,440	\$178,590	\$50,023	0.17
PO-04-26-102-011	32	SCRIPTER CT	KSP	Colonial/2Sty	BC	0	2018	2,251	\$399,594			\$164,950	\$199,800	\$173,190	\$50,023	0.17
PO-04-26-102-008	33	SCRIPTER CT	KSP	Colonial/2Sty	BC	0	2018	1,896	\$355,241			\$147,080	\$177,620	\$154,430	\$50,023	0.17
PO-04-26-102-010	36	SCRIPTER CT	KSP	Colonial/2Sty	BC	0	2020	2,272	\$409,009			\$168,770	\$204,500	\$177,200	\$50,023	0.17
PO-04-26-102-009	37	SCRIPTER CT	KSP	Colonial/2Sty	BC	0	2018	2,233	\$401,092			\$165,550	\$200,550	\$173,820	\$50,023	0.17
PO-04-26-328-004	10	SPRING LAKE DR	R-L1	Colonial/2Sty	B	-5	1994	3,052	\$515,620			\$249,300	\$257,810	\$176,880	\$84,188	0.344
PO-04-26-328-005	14	SPRING LAKE DR	R-L1	SingleFamily	B	-5	1994	2,726	\$447,296			\$216,390	\$223,650	\$144,300	\$78,030	0.27
PO-04-26-328-006	18	SPRING LAKE DR	R-L1	Colonial/2Sty	B	-10	1995	2,772	\$451,409			\$218,310	\$225,700	\$191,240	\$77,484	0.261
PO-04-26-179-017	21	SPRING LAKE DR	R-L1	Colonial/2Sty	B	-5	1995	2,725	\$381,316			\$176,450	\$190,660	\$133,480	\$45,235	0.396
PO-04-26-328-007	22	SPRING LAKE DR	R-L	SingleFamily	B	-5	1996	2,363	\$500,806	\$599,900	8/5/2022	\$227,820	\$250,400	\$239,210	\$106,304	0.526
PO-04-26-179-016	25	SPRING LAKE DR	R-L1	Colonial/2Sty	BC	0	1996	2,791	\$323,173			\$149,710	\$161,590	\$112,910	\$36,976	0.392
PO-04-26-180-010	26	SPRING LAKE DR	R-L	SingleFamily	B	10	1995	3,632	\$632,549			\$285,960	\$316,270	\$208,820	\$103,078	0.39
PO-04-26-179-015	29	SPRING LAKE DR	R-L1	Colonial/2Sty	B	-5	1995	2,621	\$386,183			\$180,350	\$193,090	\$139,110	\$34,495	0.277
PO-04-26-180-009	30	SPRING LAKE DR	R-L	Colonial/2Sty	B	10	1995	3,497	\$720,506			\$299,810	\$360,250	\$252,490	\$102,495	0.391
PO-04-26-179-014	33	SPRING LAKE DR	R-L1	Colonial/2Sty	BC	0	1996	2,204	\$298,783			\$138,220	\$149,390	\$115,690	\$35,550	0.255
PO-04-26-180-008	34	SPRING LAKE DR	R-L	Colonial/2Sty	B	10	1995	4,338	\$794,755			\$357,940	\$397,380	\$303,260	\$103,740	0.347
PO-04-26-179-013	37	SPRING LAKE DR	R-L1	Colonial/2Sty	BC	0	1996	2,806	\$327,227			\$151,870	\$163,610	\$117,250	\$35,550	0.253
PO-04-26-180-007	38	SPRING LAKE DR	R-L	SingleFamily	B	10	1996	3,091	\$645,539			\$292,090	\$322,770	\$221,910	\$109,395	0.311
PO-04-26-179-012	41	SPRING LAKE DR	R-L1	Colonial/2Sty	BC	0	1997	2,726	\$330,830			\$153,570	\$165,420	\$121,650	\$35,550	0.251
PO-04-26-180-006	42	SPRING LAKE DR	R-L	Ranch	BC	0	1996	2,367	\$478,990			\$217,760	\$239,500	\$171,040	\$100,294	0.284
PO-04-26-179-011	45	SPRING LAKE DR	R-L1	Colonial/2Sty	B	-10	1997	2,809	\$421,114			\$195,670	\$210,560	\$149,940	\$43,971	0.315
PO-04-26-180-005	46	SPRING LAKE DR	R-L	Contemporary	B	-10	1995	2,902	\$503,855			\$228,970	\$251,930	\$188,120	\$100,766	0.269
PO-04-26-180-004	50	SPRING LAKE DR	R-L	Colonial/2Sty	B	0	1997	3,433	\$645,544			\$293,700	\$322,770	\$258,870	\$136,829	0.547
PO-04-26-180-003	54	SPRING LAKE DR	R-L1	Colonial/2Sty	B	-10	1996	2,628	\$359,704			\$167,280	\$179,850	\$128,570	\$36,865	0.281

PO-04-26-180-002	58	SPRING LAKE DR	R-L1	Colonial/2Sty	BC	0	1996	2,552	\$346,586			\$159,120	\$173,290	\$121,430	\$49,375	0.359
PO-04-27-229-008	18	STANTON ST	REX	SingleFamily	C	-5	1900	1,348	\$160,843			\$78,830	\$80,420	\$39,140	\$37,900	0.2
PO-04-27-227-007	19	STANTON ST	REX	Bungalow	C	-5	1930	1,110	\$138,817			\$63,770	\$69,410	\$34,190	\$37,900	0.11
PO-04-27-229-009	20	STANTON ST	REX	Colonial/2Sty	C	-5	1900	1,390	\$197,774			\$96,540	\$98,890	\$91,750	\$37,900	0.19
PO-04-27-227-008	21	STANTON ST	REX		D	0	0	0	\$37,900			\$14,800	\$18,950	\$9,660	\$37,900	0.11
PO-04-27-229-010	22	STANTON ST	REX	SingleFamily	C	-5	1900	1,340	\$185,803			\$91,610	\$92,900	\$53,060	\$37,900	0.18
PO-04-27-227-009	23	STANTON ST	REX		D	0	0	0	\$37,900			\$12,880	\$18,950	\$7,990	\$37,900	0.171
PO-04-27-229-011	26	STANTON ST	REX	Bungalow	C	0	1900	1,158	\$152,155			\$72,640	\$76,080	\$39,290	\$37,900	0.17
PO-04-27-227-010	27	STANTON ST	RDX	TwnHse/Duplex	C	0	1920	2,358	\$219,994			\$106,320	\$110,000	\$60,250	\$37,900	0.15
PO-04-27-229-012	28	STANTON ST	REX	Bungalow	CD	0	1930	1,790	\$202,255			\$97,150	\$101,130	\$54,140	\$37,900	0.19
PO-04-27-229-013	30	STANTON ST	REX	SingleFamily	CD	0	1930	1,285	\$165,761			\$75,990	\$82,880	\$38,850	\$37,900	0.13
PO-04-26-131-017	403	SUNSET BLVD	R-L1	SingleFamily	B	-10	2000	2,629	\$366,539			\$170,670	\$183,270	\$143,980	\$35,228	0.227
PO-04-26-251-008	408	SUNSET BLVD	R-L1	Ranch	BC	0	1999	2,149	\$353,039	\$424,900	3/31/2023	\$170,770	\$176,520	\$176,520	\$67,253	0.301
PO-04-26-131-016	411	SUNSET BLVD	R-L1	Colonial/2Sty	B	-10	1999	2,178	\$321,073			\$148,750	\$160,540	\$113,260	\$36,245	0.2
PO-04-26-251-009	416	SUNSET BLVD	R-L1	Colonial/2Sty	B	-5	1998	3,076	\$434,873			\$210,050	\$217,440	\$165,010	\$66,439	0.367
PO-04-26-131-015	419	SUNSET BLVD	R-L1	Colonial/2Sty	B	-5	1997	2,982	\$390,130			\$181,850	\$195,070	\$145,200	\$36,872	0.205
PO-04-26-251-010	424	SUNSET BLVD	R-L1	Colonial/2Sty	B	-5	1998	3,063	\$448,454			\$216,520	\$224,230	\$142,770	\$66,333	0.416
PO-04-26-131-014	427	SUNSET BLVD	R-L1	SingleFamily	B	-10	1999	2,905	\$396,325			\$185,300	\$198,160	\$139,180	\$33,349	0.206
PO-04-26-251-011	432	SUNSET BLVD	R-L1	Colonial/2Sty	B	-10	2013	2,550	\$457,529			\$220,840	\$228,760	\$189,210	\$80,821	0.254
PO-04-26-131-013	435	SUNSET BLVD	R-L1	Colonial/2Sty	B	-5	1998	2,435	\$386,314			\$180,080	\$193,160	\$133,350	\$36,260	0.203
PO-04-26-131-012	443	SUNSET BLVD	R-L1	Colonial/2Sty	B	-10	2005	2,707	\$397,150			\$185,520	\$198,580	\$160,020	\$33,686	0.206
PO-04-26-205-002	448	SUNSET BLVD	R-L1	Colonial/2Sty	BC	0	2012	2,599	\$428,005			\$206,630	\$214,000	\$146,630	\$76,506	0.272
PO-04-26-204-001	456	SUNSET BLVD	R-L1	Colonial/2Sty	B	-10	2012	2,599	\$436,717			\$204,030	\$218,360	\$175,910	\$35,112	0.25
PO-04-26-202-021	459	SUNSET BLVD	R-L1	Colonial/2Sty	B	-10	1998	2,983	\$471,367			\$217,430	\$235,680	\$165,220	\$60,380	0.4
PO-04-26-204-002	464	SUNSET BLVD	R-L1	SingleFamily	B	-5	2000	3,081	\$481,414	\$455,000	6/18/2021	\$226,060	\$240,710	\$216,350	\$33,722	0.216
PO-04-26-202-018	467	SUNSET BLVD	R-L1	Colonial/2Sty	B	0	1998	3,066	\$433,715			\$202,730	\$216,860	\$179,110	\$37,015	0.206
PO-04-26-204-003	472	SUNSET BLVD	R-L1	Colonial/2Sty	B	-10	1999	2,954	\$395,075			\$184,650	\$197,540	\$134,780	\$33,677	0.219
PO-04-26-202-017	475	SUNSET BLVD	R-L1	Colonial/2Sty	B	-10	2001	2,769	\$414,799			\$193,700	\$207,400	\$140,930	\$36,018	0.2
PO-04-26-204-007	480	SUNSET BLVD	R-L1	Colonial/2Sty	B	-10	2001	2,816	\$416,324			\$193,010	\$208,160	\$163,270	\$45,773	0.281
PO-04-26-202-016	483	SUNSET BLVD	R-L1	Colonial/2Sty	B	-10	2001	2,678	\$374,008			\$174,110	\$187,000	\$129,270	\$36,176	0.199
PO-04-26-202-015	491	SUNSET BLVD	R-L1	SingleFamily	B	-10	2010	2,493	\$379,563			\$176,460	\$189,780	\$151,440	\$36,956	0.204
PO-04-26-204-008	496	SUNSET BLVD	R-L1	Colonial/2Sty	B	-10	2001	2,827	\$385,013			\$178,120	\$192,510	\$129,910	\$44,765	0.321
PO-04-26-202-014	499	SUNSET BLVD	R-L1	Colonial/2Sty	B	-10	2003	2,895	\$426,846			\$199,400	\$213,420	\$175,560	\$36,329	0.2
PO-04-26-202-013	507	SUNSET BLVD	R-L1	Colonial/2Sty	B	-5	2003	2,783	\$440,750			\$205,970	\$220,380	\$177,610	\$36,719	0.202
PO-04-26-202-012	515	SUNSET BLVD	R-L1	Colonial/2Sty	B	-10	1998	2,299	\$360,267	\$394,000	7/6/2021	\$167,450	\$180,130	\$160,150	\$37,234	0.19
PO-04-26-202-011	523	SUNSET BLVD	R-L1	Contemporary	B	-5	1999	2,726	\$394,225			\$183,820	\$197,110	\$138,260	\$36,536	0.215
PO-04-26-202-010	531	SUNSET BLVD	R-L1	Colonial/2Sty	B	-10	2000	2,846	\$409,973			\$191,460	\$204,990	\$142,620	\$35,732	0.304
PO-04-26-202-009	539	SUNSET BLVD	R-L1	Contemporary	BC	0	1999	2,508	\$337,268			\$156,540	\$168,630	\$120,940	\$36,060	0.294
PO-04-26-202-008	547	SUNSET BLVD	R-L1	Colonial/2Sty	B	-10	2006	2,271	\$332,323			\$151,820	\$166,160	\$147,150	\$37,004	0.208
PO-04-26-177-025	401	THORNEHILL TRL	R-X1	Colonial/2Sty	BC	0	1990	2,540	\$409,457			\$186,870	\$204,730	\$154,140	\$57,892	0.24
PO-04-26-177-024	407	THORNEHILL TRL	R-X1	Ranch	C	10	1976	1,322	\$246,053			\$113,440	\$123,030	\$83,540	\$53,778	0.192
PO-04-26-178-017	410	THORNEHILL TRL	R-X1	Colonial/2Sty	BC	0	1979	1,861	\$312,118			\$143,280	\$156,060	\$128,840	\$58,145	0.168
PO-04-26-177-023	413	THORNEHILL TRL	R-X1	Other	C	10	1976	1,825	\$257,799			\$118,690	\$128,900	\$114,470	\$54,235	0.182
PO-04-26-178-016	416	THORNEHILL TRL	R-X1	Colonial/2Sty	C	10	1977	1,522	\$249,771			\$115,470	\$124,890	\$98,560	\$61,334	0.18

PO-04-26-177-022	419	THORNEHILL TRL	R-X	Colonial/2Sty	C	5	1978	1,353	\$243,057			\$110,450	\$121,530	\$86,550	\$55,955	0.188
PO-04-26-178-015	422	THORNEHILL TRL	R-X1	Ranch	C	5	1977	1,421	\$238,566			\$110,330	\$119,280	\$96,660	\$60,652	0.182
PO-04-26-177-021	425	THORNEHILL TRL	R-X	Colonial/2Sty	C	10	1977	1,679	\$309,116			\$140,080	\$154,560	\$120,900	\$66,105	0.616
PO-04-26-178-014	428	THORNEHILL TRL	R-X1	Colonial/2Sty	BC	0	1979	2,087	\$338,978			\$155,280	\$169,490	\$103,570	\$57,183	0.18
PO-04-26-177-020	431	THORNEHILL TRL	R-X	Colonial/2Sty	C	10	1977	1,732	\$387,574	\$450,000	10/27/2022	\$175,890	\$193,790	\$184,680	\$90,935	0.319
PO-04-26-178-013	434	THORNEHILL TRL	R-X1	Ranch	C	10	1979	1,427	\$267,590			\$123,240	\$133,800	\$72,350	\$58,097	0.201
PO-04-26-177-019	437	THORNEHILL TRL	R-X	Colonial/2Sty	C	10	1986	2,131	\$358,808			\$160,980	\$179,400	\$88,600	\$50,048	0.191
PO-04-26-178-012	440	THORNEHILL TRL	R-X1	Colonial/2Sty	C	10	1978	1,392	\$219,442			\$101,640	\$109,720	\$85,990	\$58,686	0.23
PO-04-26-177-018	443	THORNEHILL TRL	R-X	Ranch	C	10	1987	1,572	\$340,922			\$153,030	\$170,460	\$86,390	\$48,997	0.188
PO-04-26-178-011	446	THORNEHILL TRL	R-X1	Colonial/2Sty	C	10	1983	2,083	\$277,997			\$127,830	\$139,000	\$98,240	\$57,156	0.201
PO-04-26-177-017	449	THORNEHILL TRL	R-X	Ranch	C	10	1986	1,584	\$336,303			\$150,960	\$168,150	\$82,930	\$48,492	0.189
PO-04-26-178-010	452	THORNEHILL TRL	R-X1	Colonial/2Sty	C	10	1978	1,428	\$260,426	\$300,000	9/1/2022	\$119,640	\$130,210	\$125,620	\$54,199	0.172
PO-04-26-177-016	455	THORNEHILL TRL	R-X	Ranch	C	10	1986	1,789	\$378,435			\$169,800	\$189,220	\$141,360	\$54,421	0.187
PO-04-26-178-009	458	THORNEHILL TRL	R-X1	Colonial/2Sty	C	10	1987	2,059	\$288,385			\$132,400	\$144,190	\$73,590	\$56,430	0.178
PO-04-26-177-015	461	THORNEHILL TRL	R-X	Colonial/2Sty	C	10	1987	2,029	\$349,710			\$156,270	\$174,860	\$154,650	\$39,258	0.179
PO-04-26-178-008	464	THORNEHILL TRL	R-X1	Ranch	C	10	1978	1,425	\$239,418			\$110,510	\$119,710	\$64,240	\$56,484	0.18
PO-04-26-177-014	467	THORNEHILL TRL	R-X	Ranch	C	10	1979	1,399	\$305,367			\$137,720	\$152,680	\$77,370	\$53,647	0.189
PO-04-26-178-007	470	THORNEHILL TRL	R-X1	Colonial/2Sty	C	10	1987	1,707	\$288,919			\$132,600	\$144,460	\$86,150	\$55,946	0.184
PO-04-26-177-013	475	THORNEHILL TRL	R-X	Colonial/2Sty	C	10	1987	1,993	\$334,264			\$150,300	\$167,130	\$85,230	\$50,477	0.177
PO-04-26-178-006	476	THORNEHILL TRL	R-X1	Colonial/2Sty	C	10	1977	1,376	\$248,182			\$114,710	\$124,090	\$72,780	\$61,418	0.19
PO-04-26-177-012	479	THORNEHILL TRL	R-X	Colonial/2Sty	C	10	1978	1,788	\$263,067			\$119,070	\$131,530	\$64,060	\$52,672	0.189
PO-04-26-178-005	482	THORNEHILL TRL	R-X1	Colonial/2Sty	C	10	1987	1,569	\$275,612			\$126,870	\$137,810	\$99,800	\$60,714	0.188
PO-04-26-177-011	485	THORNEHILL TRL	R-X	Colonial/2Sty	C	10	1979	1,788	\$282,709			\$127,750	\$141,350	\$68,580	\$53,639	0.19
PO-04-26-178-004	488	THORNEHILL TRL	R-X1	Colonial/2Sty	BC	0	1978	1,846	\$301,962			\$138,550	\$150,980	\$76,830	\$54,217	0.175
PO-04-26-177-010	491	THORNEHILL TRL	R-X	Colonial/2Sty	C	10	1985	1,866	\$323,048			\$145,420	\$161,520	\$80,720	\$53,597	0.193
PO-04-26-178-003	494	THORNEHILL TRL	R-X1	Colonial/2Sty	C	10	1985	1,432	\$232,368			\$107,130	\$116,180	\$62,250	\$53,760	0.165
PO-04-26-177-031	497	THORNEHILL TRL	R-X	Colonial/2Sty	C	10	1977	2,039	\$345,891			\$158,180	\$172,950	\$80,240	\$94,819	0.484
PO-04-26-178-002	500	THORNEHILL TRL	R-X1	Colonial/2Sty	BC	0	1978	2,097	\$350,762			\$160,440	\$175,380	\$87,730	\$53,760	0.165
PO-04-26-177-029	503	THORNEHILL TRL	R-X	Colonial/2Sty	C	10	1977	3,368	\$462,983			\$208,850	\$231,490	\$216,810	\$81,140	1.232
PO-04-26-178-001	506	THORNEHILL TRL	R-X1	Colonial/2Sty	BC	0	1986	2,021	\$343,790			\$157,390	\$171,900	\$84,720	\$57,861	0.211
PO-04-26-177-007	509	THORNEHILL TRL	R-X	Ranch	C	5	1978	1,521	\$305,954			\$138,450	\$152,980	\$85,570	\$60,998	0.64
PO-04-26-127-007	512	THORNEHILL TRL	R-X1	Colonial/2Sty	BC	0	1996	1,987	\$373,278	\$340,000	7/11/2022	\$170,640	\$186,640	\$179,170	\$61,434	0.204
PO-04-26-177-006	515	THORNEHILL TRL	R-X	Colonial/2Sty	C	10	1979	2,272	\$393,337	\$340,000	8/15/2022	\$176,230	\$196,670	\$185,040	\$55,035	0.471
PO-04-26-127-008	518	THORNEHILL TRL	R-X1	Colonial/2Sty	BC	0	1994	2,084	\$363,222			\$165,850	\$181,610	\$89,010	\$56,122	0.183
PO-04-26-177-005	521	THORNEHILL TRL	R-X	Colonial/2Sty	C	10	1987	1,774	\$329,151			\$148,290	\$164,580	\$90,090	\$56,902	0.387
PO-04-26-127-009	524	THORNEHILL TRL	R-X1	SingleFamily	BC	0	1995	1,994	\$369,424			\$168,680	\$184,710	\$90,360	\$57,389	0.186
PO-04-26-177-004	527	THORNEHILL TRL	R-X	Ranch	C	10	1987	1,777	\$341,367			\$153,390	\$170,680	\$83,320	\$52,520	0.326
PO-04-26-127-010	530	THORNEHILL TRL	R-X1	Colonial/2Sty	C	10	1995	1,637	\$291,095			\$133,600	\$145,550	\$119,090	\$57,398	0.186
PO-04-26-177-003	533	THORNEHILL TRL	R-X	Ranch	C	10	1987	1,569	\$340,517			\$152,910	\$170,260	\$136,370	\$50,838	0.307
PO-04-26-127-011	536	THORNEHILL TRL	R-X1	SingleFamily	BC	0	1993	2,033	\$388,282			\$177,110	\$194,140	\$122,670	\$55,713	0.183
PO-04-26-177-002	539	THORNEHILL TRL	R-X	Ranch	C	10	1987	1,450	\$317,335			\$142,800	\$158,670	\$96,900	\$50,578	0.306
PO-04-26-127-012	542	THORNEHILL TRL	R-X1	Colonial/2Sty	C	10	1994	1,650	\$283,678			\$130,040	\$141,840	\$74,630	\$53,760	0.172
PO-04-26-177-001	545	THORNEHILL TRL	R-X	Colonial/2Sty	BC	0	1987	2,468	\$442,117			\$198,320	\$221,060	\$102,650	\$62,226	0.345
PO-04-26-127-013	548	THORNEHILL TRL	R-X1	Colonial/2Sty	BC	0	1994	2,047	\$379,723			\$171,560	\$189,860	\$92,550	\$53,760	0.172

PO-04-26-127-014	554	THORNEHILL TRL	R-X1	Colonial/2Sty	C	10	1994	1,629	\$302,753	\$331,000	4/28/2023	\$127,610	\$151,380	\$151,380	\$61,065	0.198
PO-04-26-126-032	557	THORNEHILL TRL	R-X	SingleFamily	BC	0	1995	2,378	\$515,225			\$229,900	\$257,610	\$121,320	\$55,826	0.374
PO-04-26-127-015	560	THORNEHILL TRL	R-X1	Colonial/2Sty	BC	0	1997	1,699	\$357,879			\$163,510	\$178,940	\$157,620	\$58,738	0.169
PO-04-26-126-031	563	THORNEHILL TRL	R-X	Colonial/2Sty	BC	0	1994	2,106	\$476,423			\$212,740	\$238,210	\$117,570	\$56,053	0.336
PO-04-26-127-016	566	THORNEHILL TRL	R-X1	Colonial/2Sty	BC	0	1994	1,919	\$382,989			\$174,880	\$191,490	\$91,580	\$59,230	0.167
PO-04-26-126-030	569	THORNEHILL TRL	R-X	SingleFamily	BC	0	1993	2,543	\$500,897			\$223,560	\$250,450	\$115,540	\$50,973	0.28
PO-04-26-127-017	572	THORNEHILL TRL	R-X1	Colonial/2Sty	C	10	1993	1,823	\$312,338	\$298,000	5/4/2021	\$142,930	\$156,170	\$137,840	\$53,760	0.165
PO-04-26-126-029	575	THORNEHILL TRL	R-X	SingleFamily	BC	0	1994	2,445	\$496,570			\$221,830	\$248,290	\$173,930	\$54,993	0.298
PO-04-26-127-018	578	THORNEHILL TRL	R-X1	Colonial/2Sty	BC	0	1994	1,769	\$354,570			\$161,850	\$177,290	\$140,430	\$53,760	0.165
PO-04-26-126-028	581	THORNEHILL TRL	R-X	SingleFamily	BC	0	1994	1,709	\$402,978			\$180,720	\$201,490	\$165,370	\$57,314	0.325
PO-04-26-127-019	584	THORNEHILL TRL	R-X1	Colonial/2Sty	BC	0	1995	1,947	\$383,898			\$175,020	\$191,950	\$94,320	\$53,760	0.165
PO-04-26-126-027	587	THORNEHILL TRL	R-X1	Colonial/2Sty	BC	0	1993	2,203	\$366,386	\$405,000	6/23/2022	\$167,660	\$183,190	\$176,040	\$63,198	0.339
PO-04-26-127-020	590	THORNEHILL TRL	R-X1	Colonial/2Sty	BC	0	1993	2,215	\$406,697			\$185,450	\$203,350	\$156,580	\$57,021	0.169
PO-04-26-126-026	593	THORNEHILL TRL	R-X1	SingleFamily	BC	0	1994	1,800	\$349,188			\$159,680	\$174,590	\$153,990	\$58,580	0.253
PO-04-26-127-021	596	THORNEHILL TRL	R-X1	Colonial/2Sty	BC	0	1995	2,250	\$395,355			\$180,440	\$197,680	\$93,080	\$59,950	0.165
PO-04-26-126-025	599	THORNEHILL TRL	R-X1	Colonial/2Sty	BC	0	1994	2,221	\$398,564			\$181,740	\$199,280	\$100,320	\$56,986	0.211
PO-04-26-127-022	602	THORNEHILL TRL	R-X1	Colonial/2Sty	BC	0	1995	1,923	\$377,541			\$172,120	\$188,770	\$93,530	\$53,760	0.165
PO-04-26-126-024	605	THORNEHILL TRL	R-X1	Colonial/2Sty	BC	0	1993	1,211	\$250,916			\$115,380	\$125,460	\$98,050	\$54,208	0.184
PO-04-26-127-023	608	THORNEHILL TRL	R-X1	Colonial/2Sty	BC	0	1995	2,225	\$412,407			\$187,770	\$206,200	\$101,230	\$53,760	0.165
PO-04-26-126-023	611	THORNEHILL TRL	R-X1	SingleFamily	BC	0	1994	2,317	\$412,681			\$187,920	\$206,340	\$101,220	\$53,760	0.18
PO-04-26-127-024	614	THORNEHILL TRL	R-X1	SingleFamily	BC	0	1994	1,709	\$345,091			\$157,600	\$172,550	\$86,210	\$53,760	0.165
PO-04-26-126-022	617	THORNEHILL TRL	R-X1	SingleFamily	BC	0	1994	2,297	\$381,352	\$410,000	7/12/2022	\$173,910	\$190,680	\$182,600	\$53,760	0.18
PO-04-26-127-025	620	THORNEHILL TRL	R-X1	Colonial/2Sty	BC	0	1993	2,122	\$367,134			\$167,530	\$183,570	\$141,430	\$53,760	0.165
PO-04-26-126-021	623	THORNEHILL TRL	R-X1	Colonial/2Sty	BC	0	1995	2,061	\$378,095			\$172,690	\$189,050	\$91,110	\$54,853	0.189
PO-04-26-127-026	626	THORNEHILL TRL	R-X1	Colonial/2Sty	BC	0	1994	1,763	\$351,783			\$160,590	\$175,890	\$97,150	\$53,760	0.165
PO-04-26-126-020	629	THORNEHILL TRL	R-X1	Colonial/2Sty	BC	0	1994	2,315	\$416,888			\$190,120	\$208,440	\$101,990	\$59,837	0.235
PO-04-26-127-027	632	THORNEHILL TRL	R-X1	Colonial/2Sty	BC	0	1993	2,163	\$412,903			\$188,570	\$206,450	\$100,730	\$62,630	0.225
PO-04-26-126-019	635	THORNEHILL TRL	R-X1	Colonial/2Sty	BC	0	1993	1,697	\$338,956			\$155,250	\$169,480	\$116,870	\$61,258	0.21
PO-04-26-202-006	638	THORNEHILL TRL	R-L1	Colonial/2Sty	B	-10	2001	2,891	\$417,585			\$194,930	\$208,790	\$141,780	\$36,715	0.277
PO-04-26-126-018	641	THORNEHILL TRL	R-X1	SingleFamily	BC	0	1995	2,204	\$382,693			\$174,440	\$191,350	\$117,830	\$53,760	0.165
PO-04-26-202-007	642	THORNEHILL TRL	R-L1	Colonial/2Sty	B	-10	1998	2,153	\$321,227			\$148,690	\$160,610	\$128,970	\$37,272	0.264
PO-04-26-126-017	647	THORNEHILL TRL	R-X1	SingleFamily	BC	0	1993	2,064	\$365,389			\$166,730	\$182,690	\$145,640	\$53,760	0.165
PO-04-26-126-016	653	THORNEHILL TRL	R-X1	SingleFamily	BC	0	1993	2,021	\$388,152			\$176,950	\$194,080	\$152,580	\$53,760	0.165
PO-04-26-126-015	659	THORNEHILL TRL	R-X1	SingleFamily	BC	0	1992	1,700	\$348,014			\$158,960	\$174,010	\$87,320	\$53,760	0.165
PO-04-26-126-014	665	THORNEHILL TRL	R-X1	SingleFamily	BC	0	1993	2,099	\$397,415			\$181,280	\$198,710	\$109,760	\$53,760	0.165
PO-04-26-126-013	671	THORNEHILL TRL	R-X1	SingleFamily	BC	0	1993	2,033	\$378,562			\$172,650	\$189,280	\$142,660	\$53,760	0.165
PO-04-26-126-012	677	THORNEHILL TRL	R-X1	Colonial/2Sty	BC	0	1992	2,162	\$375,815	\$355,000	9/16/2021	\$172,370	\$187,910	\$166,110	\$72,191	0.222
PO-04-26-201-003	683	THORNEHILL TRL	R-L1	Contemporary	BC	0	1997	2,364	\$304,020			\$140,830	\$152,010	\$109,740	\$34,787	0.215
PO-04-22-453-051	39	WASHINGTON ST	CME		D	0	0	0	\$0			\$0	\$0	\$0	\$0	0.58
PO-04-22-453-017	59	WASHINGTON ST	RVX	Bungalow	C	0	1928	1,200	\$214,905			\$95,040	\$107,450	\$46,370	\$53,865	0.145
PO-04-22-457-010	60	WASHINGTON ST	REX	Bungalow	C	-5	1915	1,229	\$185,691			\$91,460	\$92,850	\$87,680	\$56,850	0.17
PO-04-27-276-003	71	WASHINGTON ST	CME		D	0	0	0	\$0			\$0	\$0	\$0	\$0	0.27
PO-04-27-276-032	73	WASHINGTON ST	CME		D	0	0	0	\$0			\$0	\$0	\$0	\$0	1
PO-04-22-451-001	87	WASHINGTON ST	RVX	SingleFamily	CD	0	1888	1,751	\$221,390			\$90,610	\$110,700	\$49,560	\$69,458	0.341

PO-04-27-279-001	92	WASHINGTON ST	REX	Other	CD	0	1900	2,098	\$231,836			\$120,590	\$115,920	\$112,380	\$56,850	0.16
PO-04-27-279-002	94	WASHINGTON ST	RDX	TwnHse/Duplex	CD	0	1920	1,258	\$199,305			\$100,530	\$99,650	\$70,210	\$56,850	0.14
PO-04-22-380-007	95	WASHINGTON ST	RVX	Colonial/2Sty	C	-5	1910	1,469	\$237,055			\$95,880	\$118,530	\$79,950	\$69,458	0.365
PO-04-27-279-003	96	WASHINGTON ST	REX	Other	C	0	1900	2,061	\$252,043			\$123,000	\$126,020	\$44,010	\$56,850	0.15
PO-04-22-454-010	96	WASHINGTON ST	CME		D	0	0	0	\$0			\$0	\$0	\$0	\$0	3.58
PO-04-27-279-004	98	WASHINGTON ST	REX	Other	CD	0	1900	1,598	\$96,959	\$73,000	12/21/2023	\$40,630	\$48,480	\$48,480	\$56,850	0.15
PO-04-27-276-022	99	WASHINGTON ST	RDX	MultiTenant	C	0	1900	2,722	\$289,781			\$144,320	\$144,890	\$144,890	\$69,458	0.35
PO-04-22-380-006	101	WASHINGTON ST	RDX	TwnHse/Duplex	C	0	1900	2,185	\$288,046			\$120,830	\$144,020	\$66,070	\$69,458	0.311
PO-04-27-276-023	103	WASHINGTON ST	RVX	Colonial/2Sty	C	-10	1830	3,104	\$351,770	\$342,000	12/17/2021	\$178,800	\$175,890	\$175,890	\$88,988	0.661
PO-04-22-454-005	108	WASHINGTON ST	RDX	TwnHse/Duplex	C	-5	1900	2,014	\$209,045			\$102,180	\$104,520	\$52,870	\$75,000	0.37
PO-04-27-279-013	122	WASHINGTON ST	REX	Bungalow	CD	0	1925	1,602	\$195,993			\$106,080	\$98,000	\$50,610	\$56,850	0.19
PO-04-27-279-014	124	WASHINGTON ST	RDX	MultiTenant	C	0	1900	1,560	\$224,602			\$120,840	\$112,300	\$53,250	\$56,850	0.275
PO-04-27-279-015	136	WASHINGTON ST	CME		D	0	0	0	\$0			\$0	\$0	\$0	\$0	0.73
PO-04-26-152-001	136	WASHINGTON ST	CME		D	0	0	0	\$0			\$0	\$0	\$0	\$0	0.42
PO-04-27-126-002	11	WEST ST	RVX	Ranch	CD	0	1920	810	\$161,892			\$72,900	\$80,950	\$62,240	\$46,305	0.327
PO-04-27-126-003	24	WEST ST	RVX	Ranch	CD	0	1954	1,075	\$177,566			\$85,520	\$88,780	\$88,780	\$35,910	0.263
PO-04-27-126-040	35	WEST ST	RVX	Ranch	CD	0	1920	864	\$199,239			\$90,130	\$99,620	\$94,630	\$64,050	1.111
PO-04-26-204-024	311	WHISPERING WINDS	R-L1	Colonial/2Sty	B	-10	2012	2,784	\$432,867			\$202,140	\$216,430	\$167,410	\$35,513	0.382
PO-04-26-205-003	314	WHISPERING WINDS	R-L1	Colonial/2Sty	B	-10	2007	2,760	\$477,231			\$230,280	\$238,620	\$219,290	\$75,163	0.224
PO-04-26-204-023	319	WHISPERING WINDS	R-L1	SingleFamily	B	-10	2005	2,692	\$412,249			\$192,390	\$206,120	\$147,670	\$36,032	0.251
PO-04-26-205-004	322	WHISPERING WINDS	R-L1	Colonial/2Sty	B	-10	2005	2,536	\$403,305			\$194,970	\$201,650	\$169,010	\$77,642	0.228
PO-04-26-204-022	327	WHISPERING WINDS	R-L1	Colonial/2Sty	B	-10	2007	2,754	\$402,773			\$187,960	\$201,390	\$135,460	\$34,718	0.217
PO-04-26-205-005	330	WHISPERING WINDS	R-L1	Colonial/2Sty	B	-10	2004	2,808	\$435,071	\$406,000	6/10/2021	\$210,210	\$217,540	\$200,060	\$77,626	0.247
PO-04-26-204-021	335	WHISPERING WINDS	R-L1	Colonial/2Sty	B	-10	2014	2,555	\$416,213			\$193,870	\$208,110	\$185,170	\$37,391	0.207
PO-04-26-205-006	338	WHISPERING WINDS	R-L1	Colonial/2Sty	B	-10	2004	2,816	\$436,474			\$210,970	\$218,240	\$181,070	\$81,096	0.236
PO-04-26-204-020	343	WHISPERING WINDS	R-L1	Colonial/2Sty	B	-10	2004	2,741	\$416,955	\$390,000	6/29/2021	\$201,420	\$208,480	\$191,650	\$71,757	0.207
PO-04-26-204-019	351	WHISPERING WINDS	R-L1	CapeCod	B	-10	2005	2,508	\$379,312			\$176,450	\$189,660	\$132,880	\$37,179	0.222
PO-04-26-204-054	359	WHISPERING WINDS	R-L1	Colonial/2Sty	B	-10	2014	2,530	\$454,321			\$219,210	\$227,160	\$185,940	\$77,311	0.341
PO-04-22-352-018	1	WILLOW ST	RVX	Ranch	C	-5	1972	1,228	\$284,692	\$297,000	11/22/2023	\$130,010	\$142,350	\$142,350	\$46,305	0.352
PO-04-22-378-008	2	WILLOW ST	RVX	Ranch	C	-5	1960	1,008	\$213,193			\$98,990	\$106,600	\$60,930	\$35,910	0.241
PO-04-22-352-010	3	WILLOW ST	RVX	Ranch	C	-5	1971	960	\$234,961			\$106,300	\$117,480	\$63,210	\$46,305	0.33
PO-04-22-378-007	4	WILLOW ST	RVX	Ranch	C	-5	1971	988	\$242,865			\$113,130	\$121,430	\$67,170	\$35,910	0.256
PO-04-22-352-009	5	WILLOW ST	RVX	Ranch	C	-5	1968	1,291	\$279,817			\$0	\$139,910	\$122,300	\$46,305	0.338
PO-04-22-378-006	6	WILLOW ST	RVX	Bungalow	C	-5	1968	910	\$195,136			\$91,530	\$97,570	\$71,100	\$35,910	0.265
PO-04-22-352-008	7	WILLOW ST	RVX	Ranch	C	0	1968	1,350	\$277,326	\$242,000	8/31/2021	\$125,960	\$138,660	\$132,250	\$46,305	0.336
PO-04-22-378-005	8	WILLOW ST	RVX	Ranch	C	-5	1971	988	\$231,239			\$107,860	\$115,620	\$65,170	\$35,910	0.259
PO-04-26-130-010	706	WOODLEIGH WAY	R-X1	Colonial/2Sty	BC	0	1989	2,047	\$375,459			\$171,690	\$187,730	\$92,700	\$60,634	0.25
PO-04-26-178-034	709	WOODLEIGH WAY	R-X1	Colonial/2Sty	C	10	1991	2,016	\$327,103			\$149,810	\$163,550	\$138,520	\$57,202	0.219
PO-04-26-130-009	712	WOODLEIGH WAY	R-X1	Colonial/2Sty	C	10	1989	2,070	\$325,548	\$340,000	9/17/2021	\$149,390	\$162,770	\$144,070	\$62,251	0.188
PO-04-26-178-033	715	WOODLEIGH WAY	R-X1	Colonial/2Sty	BC	0	1991	1,789	\$339,583			\$155,320	\$169,790	\$133,590	\$56,538	0.188
PO-04-26-130-008	718	WOODLEIGH WAY	R-X1	Colonial/2Sty	C	10	1989	1,692	\$308,143			\$141,300	\$154,070	\$120,850	\$58,975	0.195
PO-04-26-178-032	721	WOODLEIGH WAY	R-X1	Colonial/2Sty	C	10	1989	1,683	\$277,278			\$127,370	\$138,640	\$113,670	\$56,188	0.182
PO-04-26-130-007	724	WOODLEIGH WAY	R-X1	Colonial/2Sty	C	10	1990	1,975	\$305,455			\$140,360	\$152,730	\$79,520	\$61,864	0.186
PO-04-26-178-031	727	WOODLEIGH WAY	R-X1	Colonial/2Sty	BC	0	1991	1,694	\$306,765			\$140,600	\$153,380	\$76,270	\$56,896	0.198

PO-04-26-130-006	730	WOODLEIGH WAY	R-X1	Colonial/2Sty	C	10	1989	1,642	\$278,339	\$277,500	9/13/2022	\$128,090	\$139,170	\$134,490	\$60,998	0.189
PO-04-26-178-030	733	WOODLEIGH WAY	R-X1	Colonial/2Sty	C	10	1989	1,680	\$262,436			\$120,760	\$131,220	\$103,220	\$57,290	0.233
PO-04-26-130-005	736	WOODLEIGH WAY	R-X1	Colonial/2Sty	C	10	1989	2,020	\$315,242			\$146,600	\$157,620	\$141,360	\$61,363	0.195
PO-04-26-178-029	739	WOODLEIGH WAY	R-X1	Colonial/2Sty	BC	0	1990	2,202	\$362,142	\$353,500	6/7/2021	\$165,560	\$181,070	\$159,810	\$57,855	0.229
PO-04-26-178-028	745	WOODLEIGH WAY	R-X1	Colonial/2Sty	BC	0	1989	1,688	\$331,912			\$151,990	\$165,960	\$83,670	\$57,263	0.202
PO-04-26-129-007	748	WOODLEIGH WAY	R-X1	Colonial/2Sty	BC	0	1990	2,054	\$379,441			\$173,470	\$189,720	\$160,680	\$60,538	0.261
PO-04-26-178-027	751	WOODLEIGH WAY	R-X1	Colonial/2Sty	BC	0	1989	2,252	\$393,412	\$425,000	6/28/2023	\$179,680	\$196,710	\$196,710	\$57,138	0.184
PO-04-26-129-006	754	WOODLEIGH WAY	R-X1	Colonial/2Sty	BC	0	1989	2,146	\$368,410			\$168,500	\$184,210	\$94,940	\$59,114	0.196
PO-04-26-178-026	757	WOODLEIGH WAY	R-X1	Colonial/2Sty	BC	0	1991	2,248	\$410,731			\$187,900	\$205,370	\$99,010	\$65,917	0.209
PO-04-26-129-001	760	WOODLEIGH WAY	R-X1	Colonial/2Sty	BC	0	1990	2,364	\$409,081			\$186,850	\$204,540	\$126,680	\$62,062	0.211
PO-04-26-127-006	763	WOODLEIGH WAY	R-X1	Colonial/2Sty	BC	0	1989	2,179	\$416,352			\$190,200	\$208,180	\$165,520	\$63,414	0.25
PO-04-26-128-001	766	WOODLEIGH WAY	R-X1	SingleFamily	C	10	1990	1,694	\$295,132			\$135,960	\$147,570	\$96,320	\$65,280	0.234
PO-04-26-127-005	769	WOODLEIGH WAY	R-X1	Colonial/2Sty	BC	0	1990	2,204	\$391,887			\$179,020	\$195,940	\$121,670	\$59,652	0.197
PO-04-26-128-012	772	WOODLEIGH WAY	R-X1	Colonial/2Sty	BC	0	1996	2,001	\$354,979			\$162,300	\$177,490	\$85,140	\$60,142	0.168
PO-04-26-127-004	775	WOODLEIGH WAY	R-X1	Colonial/2Sty	BC	0	1991	2,001	\$344,866			\$157,780	\$172,430	\$142,420	\$58,299	0.182
PO-04-26-128-011	778	WOODLEIGH WAY	R-X1	Colonial/2Sty	C	10	1995	1,976	\$306,645			\$140,680	\$153,320	\$120,700	\$59,433	0.189
PO-04-26-127-003	781	WOODLEIGH WAY	R-X1	Colonial/2Sty	BC	0	1990	2,174	\$382,278			\$174,890	\$191,140	\$163,560	\$62,276	0.201
PO-04-26-128-010	784	WOODLEIGH WAY	R-X1	Colonial/2Sty	C	10	1995	1,700	\$303,792			\$139,190	\$151,900	\$119,610	\$55,480	0.166
PO-04-26-127-002	787	WOODLEIGH WAY	R-X1	Colonial/2Sty	BC	0	1989	2,182	\$339,783			\$155,520	\$169,890	\$143,980	\$57,070	0.179
PO-04-26-128-009	790	WOODLEIGH WAY	R-X1	Colonial/2Sty	BC	0	1994	2,282	\$409,321			\$186,540	\$204,660	\$101,620	\$53,760	0.166
PO-04-26-127-001	793	WOODLEIGH WAY	R-X1	Colonial/2Sty	BC	0	1990	1,649	\$324,341	\$390,000	8/15/2023	\$134,410	\$162,170	\$162,170	\$57,070	0.179
PO-04-26-128-008	796	WOODLEIGH WAY	R-X1	Colonial/2Sty	BC	0	1995	2,298	\$424,070			\$193,010	\$212,040	\$103,130	\$53,760	0.166
PO-04-26-127-037	799	WOODLEIGH WAY	R-X1	Colonial/2Sty	C	10	1994	2,331	\$348,293			\$159,400	\$174,150	\$87,590	\$59,941	0.195
PO-04-26-128-007	802	WOODLEIGH WAY	R-X1	Colonial/2Sty	BC	0	1996	2,243	\$394,831			\$179,850	\$197,420	\$94,120	\$53,760	0.166
PO-04-26-127-036	805	WOODLEIGH WAY	R-X1	Colonial/2Sty	C	10	1994	2,321	\$410,276			\$187,390	\$205,140	\$164,160	\$59,661	0.284
PO-04-26-128-006	808	WOODLEIGH WAY	R-X1	SingleFamily	BC	0	1994	1,685	\$338,965	\$285,000	11/2/2021	\$155,180	\$169,480	\$149,600	\$60,311	0.21
PO-04-26-127-035	811	WOODLEIGH WAY	R-X1	Colonial/2Sty	BC	0	1993	2,221	\$400,752			\$182,950	\$200,380	\$166,000	\$60,493	0.249
PO-04-26-127-034	817	WOODLEIGH WAY	R-X1	Colonial/2Sty	BC	0	1993	1,619	\$338,250			\$155,110	\$169,130	\$132,910	\$64,568	0.224
PO-04-26-127-033	823	WOODLEIGH WAY	R-X1	Colonial/2Sty	BC	0	1994	1,938	\$378,859			\$173,070	\$189,430	\$94,100	\$60,106	0.225
PO-04-26-127-032	829	WOODLEIGH WAY	R-X1	Colonial/2Sty	BC	0	1994	2,172	\$369,738			\$168,890	\$184,870	\$152,920	\$58,308	0.183
PO-04-26-127-031	835	WOODLEIGH WAY	R-X1	Colonial/2Sty	BC	0	1994	2,279	\$422,670			\$194,460	\$211,340	\$103,700	\$53,760	0.165
PO-04-26-127-030	841	WOODLEIGH WAY	R-X1	Colonial/2Sty	BC	0	1994	2,279	\$429,407			\$200,640	\$214,700	\$171,840	\$53,760	0.165
PO-04-26-127-029	847	WOODLEIGH WAY	R-X1	Colonial/2Sty	BC	0	1993	2,178	\$391,538			\$178,510	\$195,770	\$120,730	\$53,760	0.165
PO-04-26-127-028	853	WOODLEIGH WAY	R-X1	Colonial/2Sty	BC	0	1993	2,147	\$397,753			\$181,880	\$198,880	\$96,830	\$63,153	0.235
PO-04-26-227-008	135	WOODRIDGE CT	RXL1	Colonial/2Sty	BC	0	1990	2,205	\$383,778			\$164,460	\$191,890	\$98,020	\$38,671	0.46
PO-04-26-227-007	145	WOODRIDGE CT	RXL1	Colonial/2Sty	BC	0	1989	2,169	\$392,279			\$168,160	\$196,140	\$150,080	\$43,008	0.43
PO-04-26-227-006	155	WOODRIDGE CT	RXL1	Colonial/2Sty	BC	0	1989	2,271	\$365,210			\$156,860	\$182,610	\$90,160	\$41,408	0.49
PO-04-26-177-026	0		CME		D	0	0	0	\$0			\$0	\$0	\$0	\$0	3.15
PO-04-23-351-001	0		RDD		D	0	0	0	\$52,929			\$20,010	\$26,460	\$20,040	\$52,929	1.97
PO-04-23-351-003	0		DNR		D	0	0	0	\$12,976			\$3,420	\$6,490	\$317	\$12,976	0.73
PO-04-22-460-049	0		CME		D	0	0	0	\$0			\$0	\$0	\$0	\$0	0.78
PO-04-22-476-004	0		DNR		D	0	0	0	\$13,509			\$3,560	\$6,750	\$1,549	\$13,509	0.76
PO-04-22-482-024	0		REX		D	0	0	0	\$37,900			\$17,690	\$18,950	\$18,950	\$37,900	0.17
PO-04-23-355-001	0		CME		D	0	0	0	\$0			\$0	\$0	\$0	\$0	1.77

PO-04-23-377-002	0	REX	D	0	0	0	\$88,350		\$43,710	\$44,180	\$28,560	\$88,350	4.05
PO-04-23-377-003	0	REX	D	0	0	0	\$122,000		\$57,360	\$61,000	\$37,490	\$122,000	7.7
PO-04-27-232-013	0	REX	D	0	0	0	\$58,500		\$31,620	\$29,250	\$20,640	\$58,500	0.76
PO-04-27-230-022	0	CME	D	0	0	0	\$0		\$0	\$0	\$0	\$0	0.01
PO-04-23-354-018	0	CME	D	0	0	0	\$0		\$0	\$0	\$0	\$0	0.21
PO-04-22-460-046	0	CME	D	0	0	0	\$0		\$0	\$0	\$0	\$0	0.13
PO-04-22-381-004	0	CME	D	0	0	0	\$0		\$0	\$0	\$0	\$0	1.476
PO-04-22-382-001	0	CME	D	0	0	0	\$0		\$0	\$0	\$0	\$0	0.65
PO-04-22-383-003	0	DNR	D	0	0	0	\$13,332		\$3,510	\$6,670	\$1,534	\$13,332	0.75
PO-04-27-277-009	0	CME	D	0	0	0	\$0		\$0	\$0	\$0	\$0	0.09
PO-04-22-380-001	0	RVX	D	0	0	0	\$35,910		\$15,880	\$17,960	\$9,870	\$35,910	0.201
PO-04-22-381-003	0	CME	D	0	0	0	\$0		\$0	\$0	\$0	\$0	0.593
PO-04-22-458-006	0	DNR	D	0	0	0	\$6,932		\$1,820	\$3,470	\$747	\$6,932	0.39
PO-04-22-459-005	0	CME	D	0	0	0	\$0		\$0	\$0	\$0	\$0	0.15
PO-04-22-460-044	0	CME	D	0	0	0	\$0		\$0	\$0	\$0	\$0	0.09
PO-04-22-385-022	0	DNR	D	0	0	0	\$22,042		\$5,800	\$11,020	\$2,961	\$22,042	1.36
PO-04-22-453-046	0	CME	D	0	0	0	\$0		\$0	\$0	\$0	\$0	0.96
PO-04-22-455-007	0	DNR	D	0	0	0	\$11,021		\$2,900	\$5,510	\$922	\$11,021	0.62
PO-04-27-202-036	0	CME	D	0	0	0	\$0		\$0	\$0	\$0	\$0	0.81
PO-04-27-129-023	0	RVX	D	0	0	0	\$35,910		\$19,390	\$17,960	\$12,030	\$35,910	0.241
PO-04-27-129-008	0	RVX	D	0	0	0	\$15,624		\$2,530	\$7,810	\$2,650	\$15,624	0.065
PO-04-27-227-017	0	CME	D	0	0	0	\$0		\$0	\$0	\$0	\$0	0.121
PO-04-27-227-015	0	CME	D	0	0	0	\$0		\$0	\$0	\$0	\$0	0.166
PO-04-27-226-047	0	CME	D	0	0	0	\$0		\$0	\$0	\$0	\$0	1.41
PO-04-26-154-003	0	CME	D	0	0	0	\$0		\$0	\$0	\$0	\$0	5.79
PO-04-26-376-007	0	CME	D	0	0	0	\$0		\$0	\$0	\$0	\$0	0.43
PO-04-26-301-001	0	CME	D	0	0	0	\$0		\$0	\$0	\$0	\$0	0.02
PO-04-27-127-010	0	RVX	D	0	0	0	\$35,910		\$19,590	\$17,960	\$12,150	\$35,910	0.274
PO-04-26-152-002	0	CME	D	0	0	0	\$0		\$0	\$0	\$0	\$0	0.4
PO-04-26-152-007	0	CME	D	0	0	0	\$0		\$0	\$0	\$0	\$0	0.06
PO-04-27-228-014	0	REX	D	0	0	0	\$58,500		\$28,700	\$29,250	\$18,750	\$58,500	0.63
PO-04-26-101-004	0	CME	D	0	0	0	\$0		\$0	\$0	\$0	\$0	0.75
PO-04-27-229-029	0	REX	D	0	0	0	\$37,900		\$12,250	\$18,950	\$7,990	\$37,900	0.11
PO-04-26-101-015	0	CME	D	0	0	0	\$0		\$0	\$0	\$0	\$0	8.1
PO-04-27-230-012	0	CME	D	0	0	0	\$0		\$0	\$0	\$0	\$0	0.242
PO-04-23-452-006	0	R-L	D	0	0	0	\$82,097		\$41,050	\$41,050	\$20,900	\$82,097	1061.17
PO-04-27-230-007	0	CME	D	0	0	0	\$0		\$0	\$0	\$0	\$0	0.37
PO-04-26-126-004	0	CME	D	0	0	0	\$0		\$0	\$0	\$0	\$0	3.59
PO-04-26-126-005	0	CME	D	0	0	0	\$329,563		\$0	\$0	\$0	\$329,563	21.104
PO-04-27-229-026	0	REX	D	0	0	0	\$19,500		\$6,460	\$9,750	\$4,220	\$19,500	0.03
PO-04-27-229-028	0	REX	D	0	0	0	\$37,900		\$20,830	\$18,950	\$13,570	\$37,900	0.23
PO-04-27-229-027	0	CME	D	0	0	0	\$0		\$0	\$0	\$0	\$0	0.13
PO-04-26-101-019	0	REX	D	0	0	0	\$68,500		\$33,230	\$34,250	\$16,540	\$68,500	1.68
PO-04-27-279-024	0	CME	D	0	0	0	\$0		\$0	\$0	\$0	\$0	0.43

PO-04-27-279-026	0		REX		D	0	0	0	\$37,900			\$16,690	\$18,950	\$1,770	\$37,900	0.16
PO-04-22-351-002	0		CME		D	0	0	0	\$0			\$0	\$0	\$0	\$0	9.44