



# OAKLAND COUNTY PLANNERS GATHERING ITC PRESENTATION

Adelaide Pascaris  
Sr. Area Manager, Local Govt. & Community Relations  
April 30, 2024



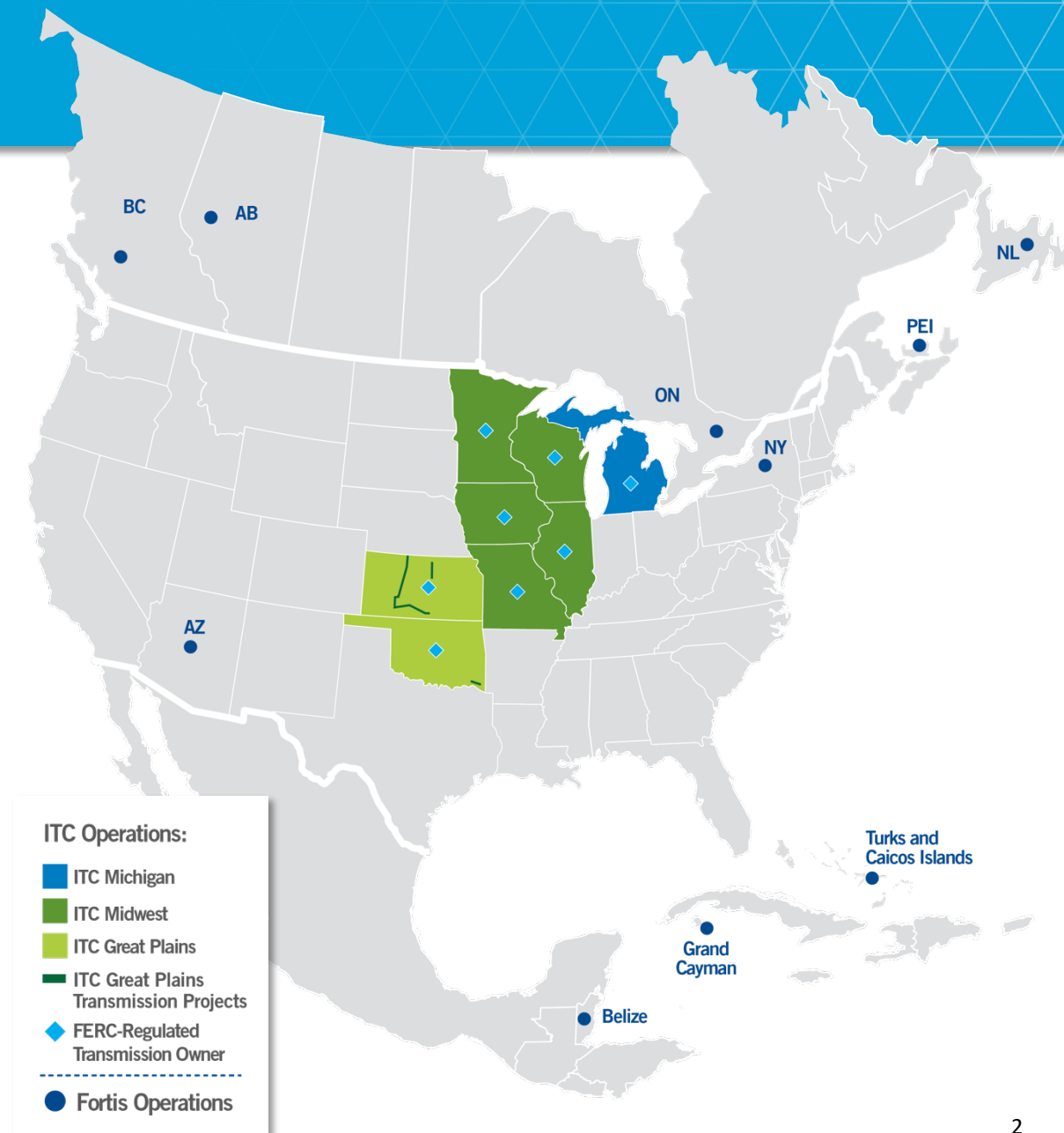
**FOR THE GREATER GRID**

# ITC AT-A-GLANCE

**ITC Focus:** Transmission infrastructure

**Broad Benefits:**

- Resilience and Reliability
- Renewable Energy Transfer
- Lower-Cost Power
- Support Innovation
- Communities and the Economy



# ITC PROFILE

**16,000 MILES**  
of transmission lines

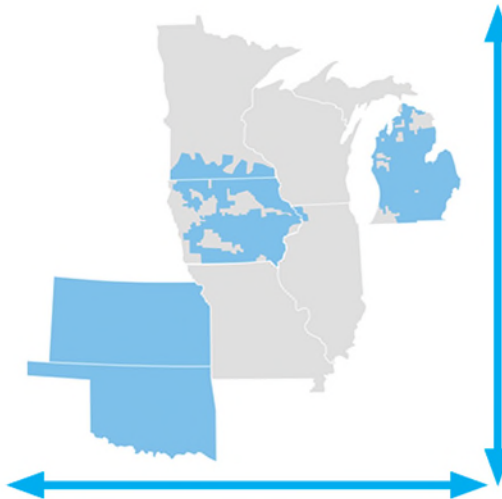


**565** stations and substations



**90,000-SQUARE MILE**  
Service Territory

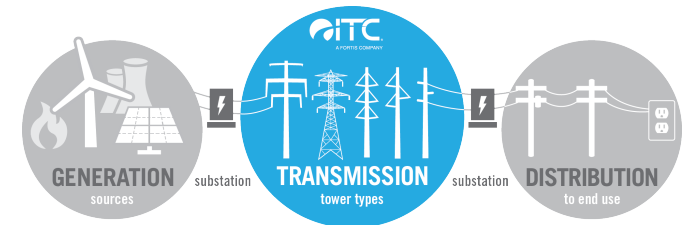
Michigan  
Iowa  
Minnesota  
Illinois  
Missouri  
Kansas  
Oklahoma



**700+** employees, and  
**1,000+** skilled labor contractors

Member of **4 RTOs**

Sole focus on transmission





# ITC MICHIGAN

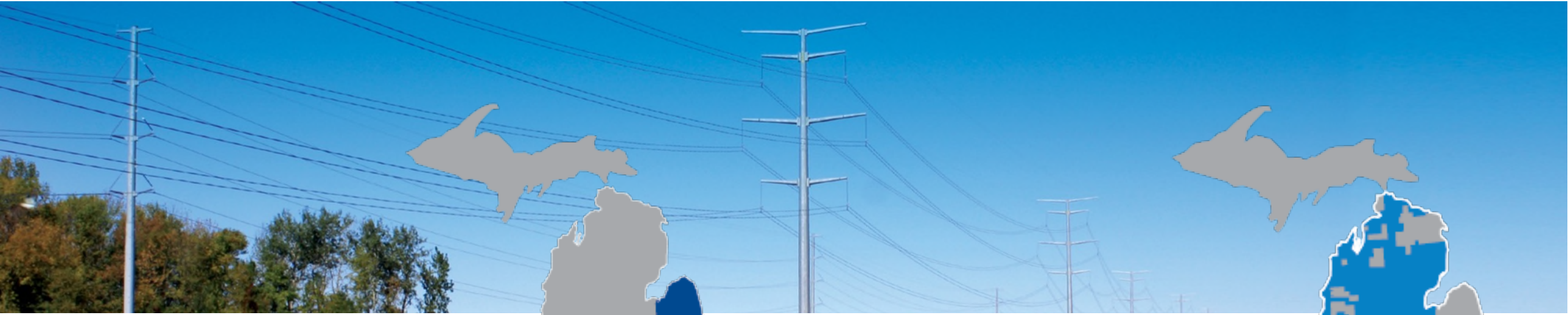


- ITC Transmission
- METC

## ITC Transmission & Michigan Electric Transmission Company (METC)

- ~7,600 miles of line serving Lower Peninsula
- 120kV - 345kV range
- Top-tier system reliability
- ~570 Employees

# ITC MICHIGAN



## ***ITC Transmission***

- Established 2003
- ~3,100 miles of line serving SE Michigan
- Top-tier system reliability
- 120kV - 345kV range

## **METC**

- Established 2006
- ~5,600 miles of line serving most of Lower Peninsula
- Top-tier system reliability
- 120kV - 345kV range



# ITC MICHIGAN: Transmission Structures



**~ 55,000**

Transmission Structures



**Steel Structures**



**Wood, Steel and Lattice Structures**



**Steel and Lattice Structures**



**Steel and Lattice Structures**



# ITC MICHIGAN: Substations



~ **300**  
Substations



**Rapson Substation**  
Huron County



**Murphy Substation**  
Saginaw County



**Bauer Substation**  
Tuscola County

# FERC & NERC



## FERC

- Reviews and approves NERC standards
- Directs NERC to develop or modify standards



## NERC

- Develops and enforces reliability standards
- Audits owners, operators, and users for compliance
- Educates and trains industry personnel



# WORKING FOR THE GREATER GRID

## LARGE-SCALE PROJECTS



## SMALL-SCALE PROJECTS



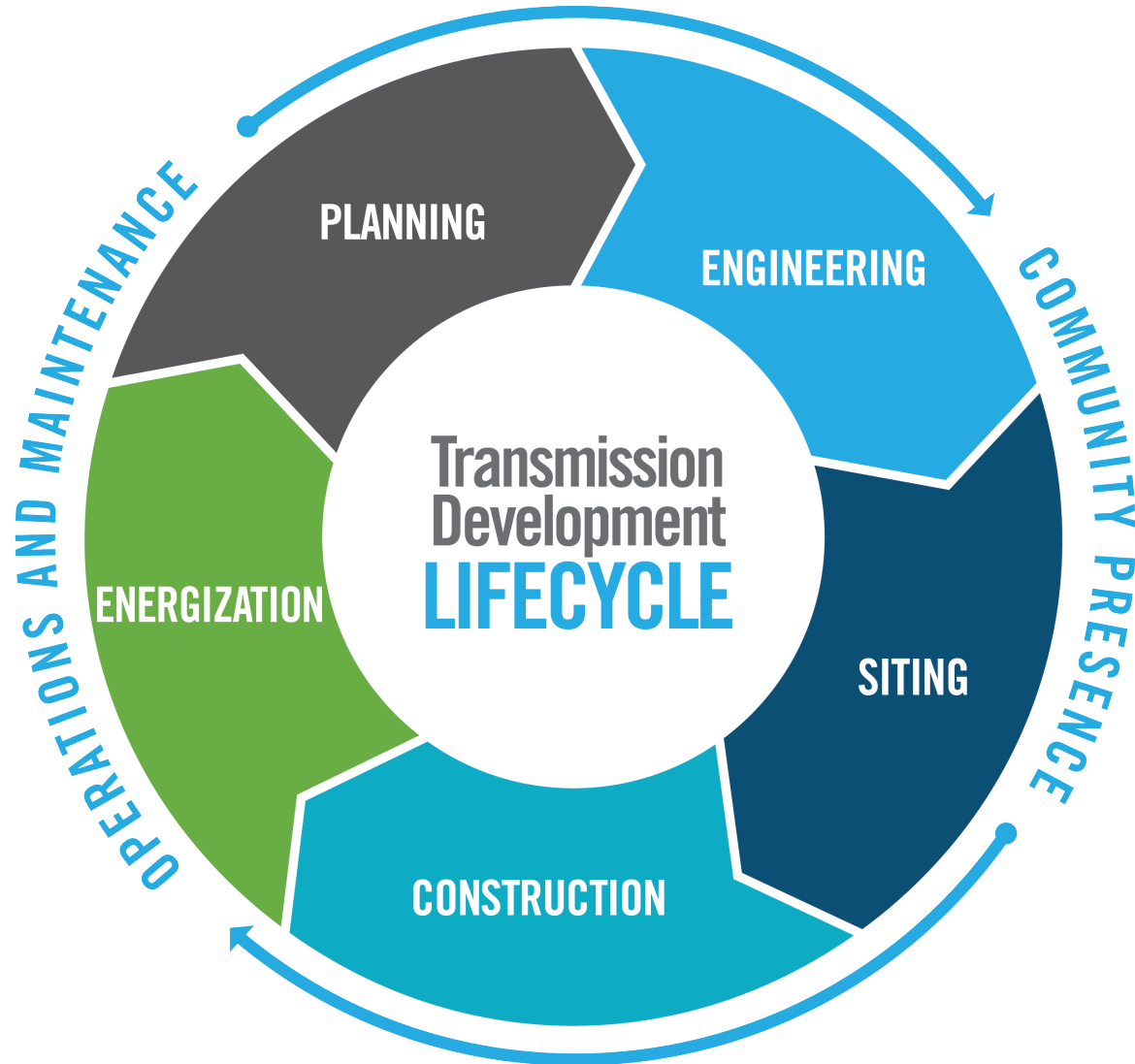
## SUBSTATION PROJECTS



## SYSTEM NETWORK UPGRADES FOR NEW GENERATION



# TRANSMISSION DEVELOPMENT CYCLE



# PLANNING



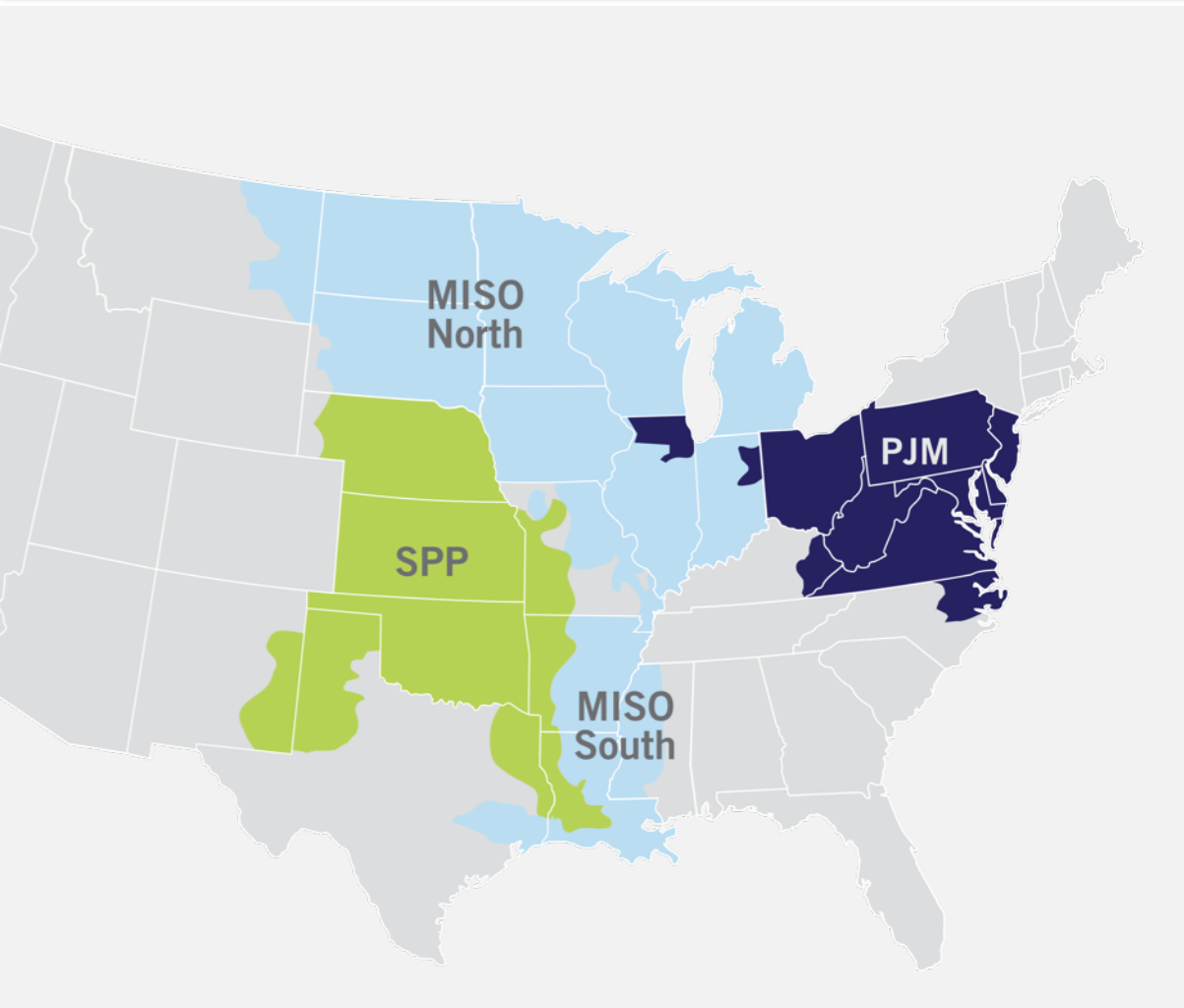
## Improve:

- Reliability
- Efficiency
- Resiliency





# PLANNING



## RTOs:

- Coordinate
- Control
- Monitor

## PLANNING



# ENGINEERING



## ENGINEERING



- Planning ➤ Engineering
- Detailed construction plans



# SITING



- Balance community needs and impacts



# SITING



- Many stakeholders
- Multiple regulators



# CONSTRUCTION



## CONSTRUCTION



- Best-in-class standards
- National Electric Safety Code



# ENERGIZATION



## ENERGIZATION



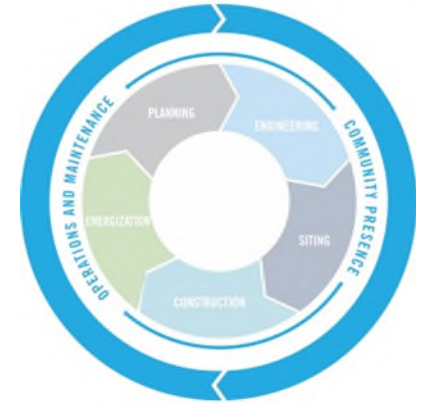
- Caretaker of infrastructure
- Corporate citizen
- Taxpayer



# OPERATIONS AND MAINTENANCE



- Regular inspections
- Vegetation management
- Community education
- “Find it, fix it”
- 100% NERC compliance



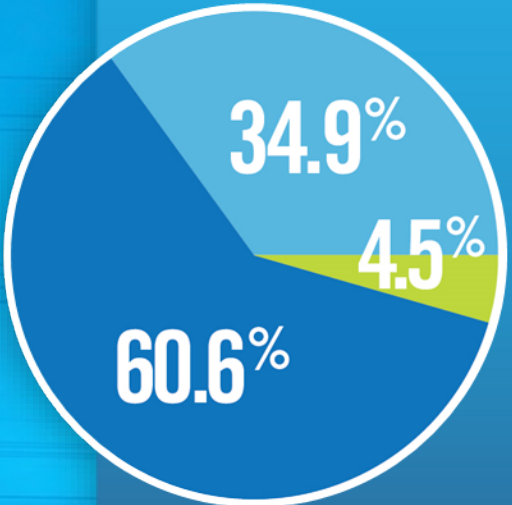
# VEGETATION MANAGEMENT

- Public safety
- Electric reliability
- Collaboration with transmission owners
- Communication with residents
- Natural greenways
- Preventive maintenance
- Foresters and other trained staff





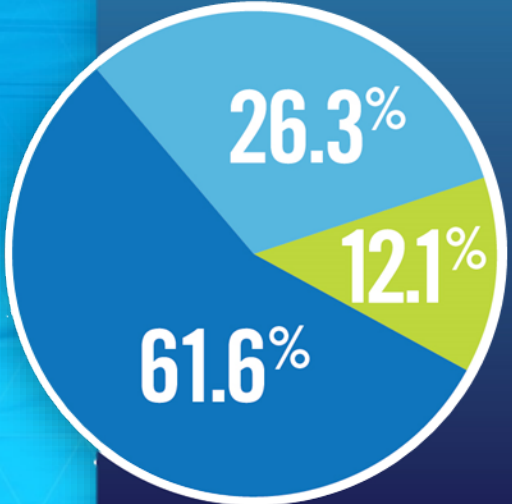
# TRANSMISSION: SMALLEST PORTION OF BILL DELIVERS BIG BENEFITS



Typical Monthly Residential Bills:  
**MICHIGAN**  
*Usage: 650 kWh/month*

Source: Michigan Public Service Commission 2023 data

- Generation
- Distribution
- Transmission**



Major Components of  
**U.S. AVERAGE**  
Electricity Price, 2022  
*(Cents per kWh and Share of Total)*

Source: U.S. Energy Information Administration



# KEY IMPACTS: MICHIGAN



## CUSTOMER SAVINGS:

ITC Michigan saved customers  
**\$220 million/yr.**  
thanks to reduced electricity  
production and delivery costs,  
and improved quality of service.



## JOB CREATION:

ITC Michigan's  
investments  
in its footprint support  
approximately  
**2,500 jobs  
annually**



## LOCAL SPENDING:

Spending in local economies  
from direct investments and  
other economic activities  
has increased by  
**\$240 million/yr.**



## TAX REVENUES:

Benefitting local, state, and federal  
entities, tax revenues generated by  
ITC's investments and activities  
amount to more than  
**\$49 million/yr.**

# COMMUNITY COMMITMENT

- Proud member of chambers and economic development groups
- Charitable giving program
- Employee volunteer opportunities
- Community events
- Environmental initiatives







# Thank You!

[www.itc-holdings.com](http://www.itc-holdings.com)  
Facebook: @ITCHoldingsCorp  
Twitter: @ITCGrid  
LinkedIn: ITC Holdings Corp

Adelaide Pascaris  
Sr. Area Manager, Local Govt. & Community Affairs  
ITC Holdings Corp.  
[apascaris@itctransco.com](mailto:apascaris@itctransco.com)



**FOR THE GREATER GRID**