

Groveland Oaks County Park

Camper Guide & Map



2024 Pricing & Hours
Open April 26 - Sept. 30



14555 Dixie Highway
Holly, MI 48442
248-634-9811



Welcome to Groveland Oaks Campground

2024 Season: April 26 - September 30

Groveland Oaks County Park is located by Stewart Lake and has the below amenities (see inside for availability/times):

- Accessible fishing pier
 - Arcade
 - Miniature Golf
 - 2-mile paved and grass trail
 - Boats & Bikes
 - Gaga Ball pit
 - Basketball court
 - Volleyball court
 - 3 Playscapes
 - Skateboard park
 - Bikes skill course
 - Sandy beach
- The campground features:
- **New Summer 2024**
 - **Camp Store**
 - 267 campsites
 - 2/4/6-person camping cabins
 - 12 group camping sites
 - 6-person Camping Yurts
 - Laundry and free showers
 - Firewood, ice & bait sales

Friendly reminder - If you are planning a visit to Holly Oaks ORV Park; only licensed registered vehicles may operate in the campground and on County Roads.

If trailers do not fit in camping parking pad they can be moved to overflow area (see contact station for details).

Contact Station 248-634-9811

For reservations, information and in season convenience items

Planning Your Visit

Check-in time for campers in 3 p.m. (no check-in after 9 p.m.). Check out time is 1 p.m. Renewals are required before 1 p.m. and are based on availability.

Day Use: All visitors are required to have a day pass or annual vehicle permit to enter

- \$12 per car regular rate
- \$5 per car Oakland County Resident Rate
- Annual permits are available

Reserving of Sites and Pavilions for 2025

Call us at 248-634-9811 or visit us online at Oakgov.com.

2025 Reservations for individual sites, and cabins/yurts available **6 months** in advance (180 days)

2025 Reservations for group areas and pavilions available **11 months** in advance (approx. 335 days)



Individual Camp Site Fees

Full Hook Up Pull Through, Site 1-5	\$58 (\$52*)
Full Hook Up, Site 6 - 112	\$53 (\$47*)
Water/Electric Pull Through Site 127,129,131 & 133	\$48 (\$42*)
Water/Electric (remaining sites)	\$43 (\$37*)
Holiday Rates	Additional \$5/night

*Oakland County Resident Rate

Monthly Rates (30 days) 30% off daily rates

Includes Holidays/Special Event fee (if applicable). Discount only applies to full month of consecutive camping on same site. Monthly fee must be paid at time of initial reservation/registration.

Important Information Individual Camp Sites

- Weekends require two night minimum (holidays three)
- Guest reservations are limited to three per household
- Check-in time is 3 p.m. (no check-in after 9 p.m.)
Check-out time is 1 p.m.
- Cancellations made seven or more days prior to the start of reservation will be fully refunded. Cancellations made less than seven days prior to the start of the reservation and before check-in time on the day of the reservation will be refunded 50%. There will be no refunds for cancellations made after 3 p.m. on the day of the reservation.

Group Area Camping Site Fees

(7 day reservation, Wed.-Tues.)

Group Area #1 and #12 (20 campsites per)	\$1,300 per site
Group Area #2-#11 (15 campsites p	\$1,100 per site
Holiday/Special Event Fee	Additional \$100 per site

Important Information Group Camping

- Group areas have a portable toilet, fire pit and shared pavilion. Each campsite on the group area has 20/30 amp electricity on-site and water nearby (no hose splitters).
- Group areas will receive two overnight passes per campsite. Day visitors purchase a day pass.
- A down payment of \$250 per group site is due at the time of reservation and balances are due no later than 30 days prior to the start of the reservation.
- Cancellations made 90 days prior to the start of the reservation will be fully refunded. Cancellations less than 90 days prior to the start of the reservation will forfeit the \$250 down payment. Cancellations made less than 30 days prior to the start of the reservation will forfeit the \$250 down payment and 50% of the additional fees collected.

Youth Camping Fees/Information

Available to scout, school or church groups. Rate is \$50/night per group area, due at time of booking. Additional fee of \$5 per person per night. Cancellation requires 14 days advance notice. Rate not available for holidays/special events. Typically an off-season rental.



Camping Cabins/ Yurt Fees

Cabin #1	\$87/night
2-person cabin with one queen-size bed	
Cabin #2 - #4	\$87/night
4-person cabin with two sets of twin-sized bunk beds	
Cabin #5 - #8	\$125/night
6-person cabin with one queen-size bed, two sets of twin-size beds, and air/heating unit.	
Yurt #1 (Accessible Yurt) and Yurt #2	\$135/night
6-person yurts feature one queen-size bed, two sets of twin size bunk beds and air/heating unit.	

Cabins/yurts require \$50 deposit by credit card at check-in. This will be refunded if no damage is found on inspection at check out.

Important Information Camping Cabins/Yurts

- Please note these are camping cabins and yurts. Indoor plumbing is not available.
- Two day stay required (holidays three).
- Guest reservations are limited to three per household
- Check-in time is 3 p.m. (no check-in after 9 p.m.)
Check-out time is 1 p.m.
- Please notify staff half hour prior to your check-out time by phone, so inspections can be made.
- Cancellations made less than seven days prior to the start of the reservation and before check-in time on the day of the reservation will be refunded 50%. There will be no refunds for cancellations made after 3 p.m. on the day of the reservation.



What to Bring and What to Leave Behind



All cabins and yurts include

- Parking for two vehicles
- Small refrigerator
- Table and chairs
- Small microwave
- Small cart for storage
- Pod Coffee/Tea Maker
- Electricity
- Outdoor grill
- Picnic table and fire pit
- Water nearby

Not allowed in cabins or yurts

- Except for service animals, no animals are allowed in or to remain overnight outside of, cabins/yurts
- Smoking of any kind or cooking with open flames is not permitted inside
- Gas or portable heaters are not allowed
- Tents are not allowed at cabin/ yurt sites

Guest must supply

- Linens for all beds
- Cooking utensils and all needed supplies

Activities and Amenities

Boat Rentals

Now located with bikes next to the beach. Check at Contact Station for hours.

\$5/half hour for Kayaks, Pedal Boats, Paddleboards and Corcls. Adults must sign out.

Rowboats - \$20/all day rental

Specialty Bike Rentals

Check at Contact Station for hours. \$5/half hour. Adult must sign out.

Beach, Arcade and Skate Park

Open daily, 8 a.m.-9 p.m.

Mini Golf

Open daily, bring your own putter and golf ball. No Charge. Golf balls available for purchase at course for four quarters or at Contact Station for \$1-2.

Boats and bikes are offered during peak season and based on weather and staff availability.

Free Recreation Options

Basketball Court, Bike Skills Course, GAGA Ball Pit, Thread Creek Trail and Volleyball Court

Open daily, see above map for locations

Fishing

Shore and dock fishing on Stewart Lake. Bait available at the Boat House during operating hours. \$4 per container. Accessible dock by Island Parking Lot.

Playscapes

Located in Section C, in the Activity Field and by the Activity Shelter.

Daily Park Entry

Regular rate: \$12/car
Oakland County resident rate: \$5/car

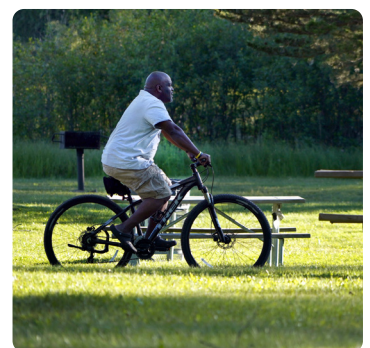
Annual Vehicle Permits are available for sale at the Contact Station

Any visit to the campground/park requires a daily entry or annual vehicle permit.

NEW Camp Store in 2024

Look for our New Camp Store to open this season.

We will offer treats, toys, snacks, souvenirs & camp necessities.



For Your Camping Convenience

Firewood \$7 or four for \$25

Fire-starters \$2 or two for \$3

Colorful fire \$3

Ice \$3

Bait \$4

All items are available at the contact station. Bait is also available during open hours at the boat house and Camp Store.

Dump Station - free and only available for on-site campers, located at front of the campground.

Honey Wagon - Tuesdays only
Must sign up at contact station by 7 p.m. on Monday and be at site during service. Service is done by contracted company. \$30 for all tanks (gray and black). Please note Holidays may change day. Camper must be on site during service

Showers - Free and open 24 hours.

Laundry - Open daily 8 a.m.-9p.m. and is located by the Pines Restroom, takes quarters.

Little free libraries locations:

Activity Center, laundry and Bathroom A. We hope you can take and share a book.

Campground Mowing Schedule

Monday: Sections D, E, F/sites 113-267

Tuesday: Group areas and activity field

Wednesday: Sections A and B/sites 1-52

Thursday: Section C/sites 53-112

Remember to remove lawn decorations, dog leash hooks, etc. to prevent damage. Subject to change due to weather/staff availability.

Tips for Happy Campers

Check-in and Check-out Information

- Check-in time is 3p.m. (**No later than 9 p.m.**) Early check-in based on availability, call ahead.
- Check-out is 1p.m.
- When checking out of cabin/yurt, please notify contact station 30 min. prior to leaving for inspection.

For Your Safety

- Do not feed birds or other wildlife at any time. This includes bird feeders attached to or around RVs and trailers.
- Cats and dogs are welcome (except at cabins/yurts) but must be kept indoors or on a six-foot leash. **Animals must not be left unattended at campsites, even if they are inside a tent or camper.** Owners or caretakers must pick up all dog droppings.
- Hammocks are permitted but may not be permanently attached to trees or campground fixtures.
- No portable fire pits permitted.
- Clotheslines must be removed at sundown.
- Please refer to the Oakland County Parks and Recreation Rules and Regulations (available on-line or at the contact station) for a complete listing of park and campground rules.

General Reminders

- **Quiet hours** are 11p.m.-7 a.m.
- **Call the contact station at 248-634-9811** with any issues, including noisy neighbors. If the **contact station is closed**, please **call the Oakland County Sheriff Dispatch at 248-858-4950**.
- **Visitors** are welcome from **8 a.m.-10 p.m.** An annual or daily permit is required for entry; no exceptions.
- Campsites are limited to immediate family or up to four unrelated persons ages 18 or older. **Maximum of two tents** or one camper and one tent per site.
- When parking, the **tongue of the camping trailer hitch must face the road** but not go into the road.
- **Only two vehicles allowed per site.**
- Fire pits are for **firewood only**. Do not put trash, pallets, brush or limbs into the fire pits.
- All trash must be disposed of in proper receptacles. **Dumpsters** are located by the **dump station, Section C restroom building, day use parking lot, behind the mini golf course and beside the concession restroom building. On-site trash pickup is not provided.**
- All gray/wastewater must be disposed of at the designated dump station(s) per the Oakland County Health Department Sanitary Code Section 4.1.
- Portable waste tanks must only be connected to a camping unit while in the process of emptying on-board holding tanks. Campers must be present and in view of portable tanks during the emptying process.
- **No hose splitters** can be attached to any water spigot or hose per the Oakland County Health Division.
- Golf carts other than those used due to a disability are prohibited for use in campgrounds, including the campground roads and pathways. Please stop at the contact station to get a pass for any eligible carts.
- All vehicles in park must be street legal.
- Scheduled mowing schedule is inside this guide. Remove lawn decorations, dog leashes, hooks, etc. to prevent damage.
- Refrigerators and other large electrical appliances are not permitted outside of trailers.
- Mail/packages may not be sent to the campground.
- Please do not cut or damage trees.

Picnic Pavilion Rental Information

Pavilions can be reserved 11 months in advance.

To reserve call 248-634-9811. Fees are paid at time of reservation and require completing a facility rental form. Park entrance fees are additional and all park rules apply. Please note pavilions are located across water and require host and guest to walk a short distance from parking lot and over a bridge. Portable toilet is located by lot and not on island.

Paradise Island Pavilion

- Max capacity 100 people
- \$250 Weekends & Holidays \$125 Monday - Friday
- Electricity
- Portable toilet by parking, not on island

Mathews Island Pavilion

- Max capacity 50 people
- \$200 Weekends & Holidays \$100 Monday - Friday
- No Electricity
- Portable toilet by parking, not on island

Campground Recreation

Detailed recreation schedules are available Thursday evenings at the Contact Station. Events are subject to change.

Activity Bags are free for campers and can be checked out at the contact station by an adult. Bags contain puzzles, games, books and other fun items. A day and night hiker bag is available, as well as ping pong and a spike ball kit.

May 25-27	Memorial Day Weekend
June 15	Celebrate Parents
June 22	Blast from the Past
June 29	All About Animals
July 4-6	Star Spangled Weekend
July 13	Crowns and Capes
July 20*	Christmas in July
July 27	Recreation Activities
Aug. 3	Out of This World
Aug. 10	Carnival Fun
Aug 17	Sweet Retreat
Aug. 24	Recreation Activities
Aug.30-Sept. 2	Labor Day Weekend
Sept. 13-14*	Groveland Spooktacular 1
Sept. 20-21*	Groveland Spooktacular 2

*These dates include a site decorating contest!

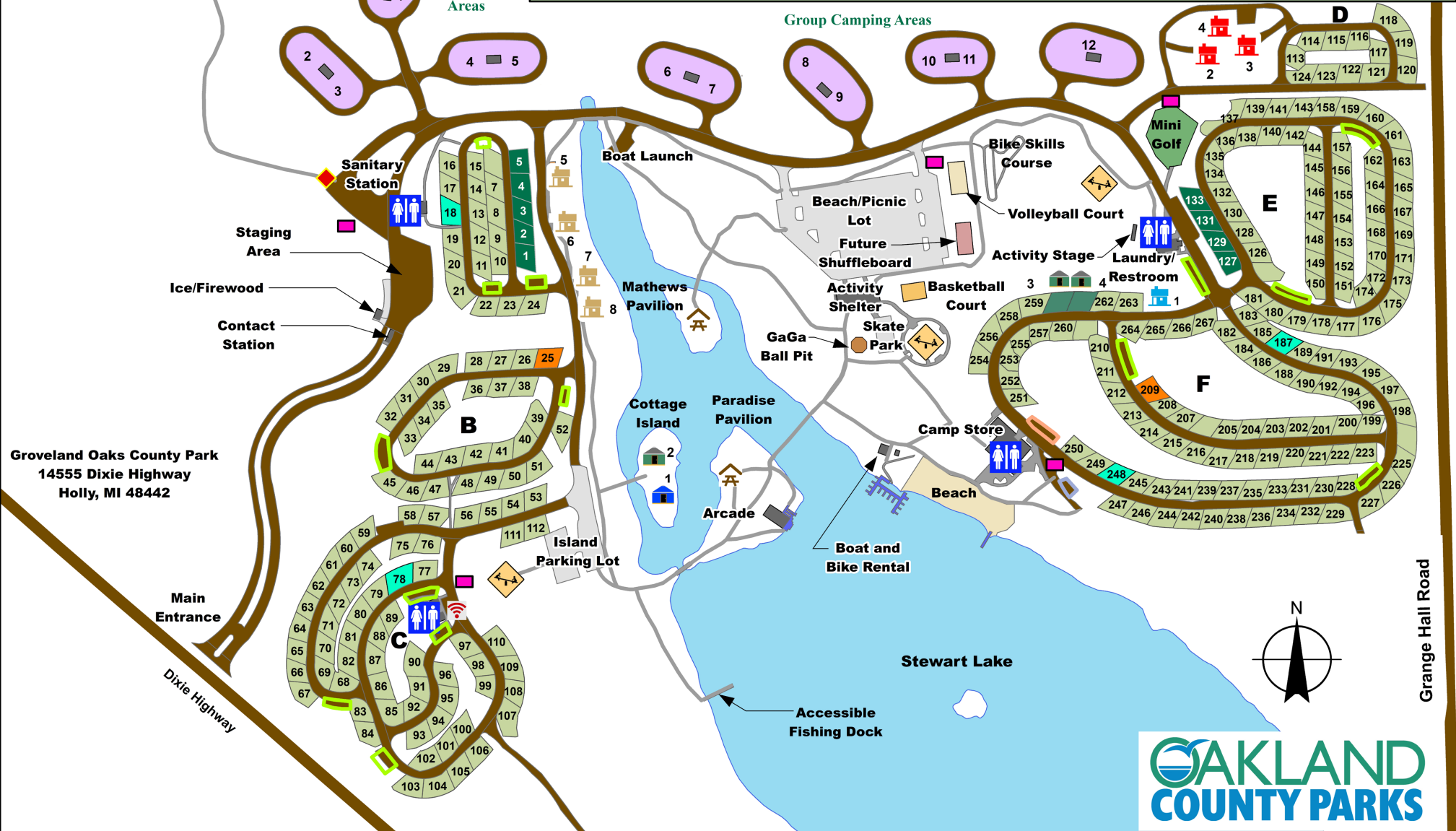
Look for our train times, \$3 a rider.



Scan to view
all Oakland
County Parks
+ Campground
Rules

GROVELAND OAKS COUNTY PARK CAMPGROUND

FULL HOOK-UP SITES - SECTIONS: A, B & C				6 PERSON CABIN		DUMPSTER	
WATER & ELECTRIC SITES - SECTIONS: D, E & F				4 PERSON CABIN		VISITOR PARKING 8 am - 10 pm Only	
	RESERVABLE SITE		2 PERSON CABIN		15 MINUTE PARKING ONLY		OAKLAND COUNTY SHERIFF PARKING
	RESERVABLE PULL THROUGH SITE		PAVILION		TRAIL		TRAIL HEAD
	CAMPGROUND HOST SITE		RESTROOM		ROAD		WIFI HOT SPOT
	ADA SITES - 18, 78, 187, & 248		PLAYGROUND				
	YURT						
	ACCESSIBLE YURT						



Groveland Oaks County Park
14555 Dixie Highway
Holly, MI 48442

