



Help us track our deer population by completing a Harvest Report. Online forms can be found at <http://bit.ly/ocpdeerhunt>



SCAN ME TO REPORT DEER HARVEST

Return completed forms to park office or parking area drop box (if available), or mail to:

Oakland County Parks
Natural Resources Coordinator
2800 Watkins Lake Road
Waterford, MI 48328

Deer Harvest Report

Hunter Name	
Phone	
Email	
ZIP	
Date Taken	
Park	
Approx. Age	Approx. Weight
Deer Shot & Recovered	
female <input type="checkbox"/> male <input type="checkbox"/> _____ points	
Deer Shot but Not Recovered	
female <input type="checkbox"/> male <input type="checkbox"/> _____ points	
Optional Information	
How many years have you been hunting at this park?	
How many deer did you see today?	

Comments or suggestions to improve deer management or your hunting experience:

Did you encounter any problems during your hunting experiences at Oakland County Parks? If yes, explain:

ARCHERY

ORION OAKS COUNTY PARK DEER HUNTING

Archery hunting is restricted to deer only on park property outside of the designated Dog Park boundaries, west of Lake Sixteen and east of Baldwin Road.

In this designated area, hunting will be in accordance with Michigan Department of Natural Resources public land regulations.

450-FOOT SAFETY ZONES FOR RESIDENTIAL/ COMMERCIAL AREAS ARE SIGNED AND STRICTLY ENFORCED ON OAKLAND COUNTY PARKS (OCP) PROPERTIES.

This program will help control the park's deer population. Hikers and hunters share the park during the season. Hunt responsibly.

Hunters are HIGHLY encouraged to take adult does to help manage the population. Deer harvested, or shot and not recovered, should be reported to park management within 24 hours by calling 248-625-0877.

PARKING

Orion Oaks deer hunters must park at the day use parking lots accessible off Baldwin or Clarkston roads. A valid Oakland County Parks vehicle permit is required. Unauthorized parked vehicles will be ticketed and towed at the owner's expense.

VEHICLE PERMITS AVAILABLE FOR SALE

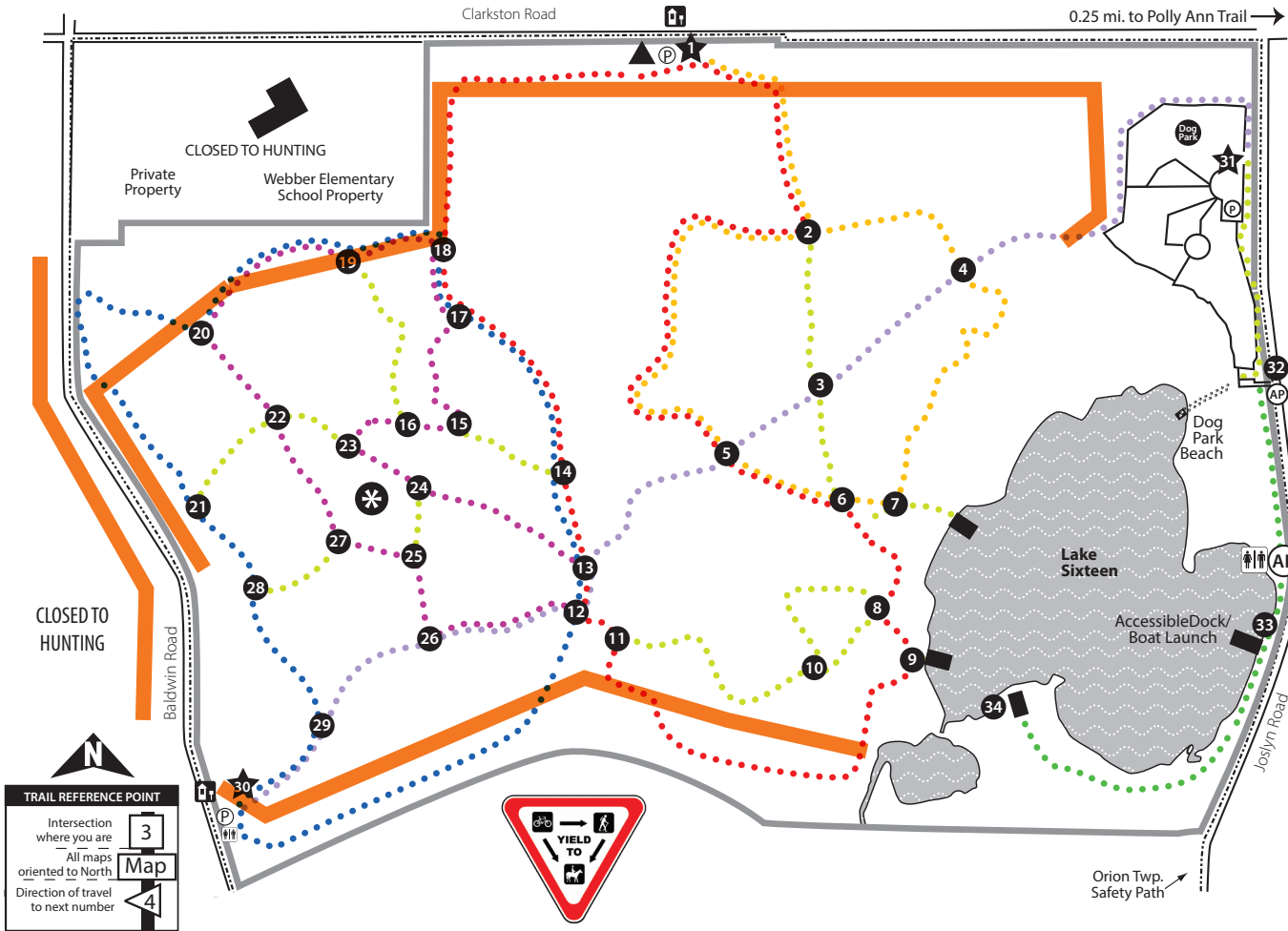
Vehicle permits are available at the Joslyn Road entrance parking lot kiosk.

Check OaklandCountyParks.com for permit sales locations.

Use of the Oakland County Parks are governed by the Park Rules & Regulations enacted by the Oakland County Parks and Recreation Commission Feb. 8, 1966. Current rules can be viewed online or a copy can be requested at 248-858-0906.



2301 W. Clarkston Road
Lake Orion, MI 48360



TRAILS	DISTANCE	TERRAIN
A Bluebird Loop	3.16 miles	Grass/packed dirt, uneven terrain
B Massasauga Loop	2.13 miles	Sand/packed dirt, uneven terrain, slight elevation changes
C Fossil Hill Loop	2.03 miles	Grass/packed dirt, uneven terrain, slight to moderate elevation changes
D Dragon Loop	2.67 miles	Grass/packed dirt, uneven terrain, slight elevation changes
E Orion Thru-way	1.84 miles	Grass/packed dirt, uneven terrain
F Dog Tail Trail	0.97 miles	Woodchip/grass, flat, slightly uneven
Connectors		


SCALE: 1"=1000'

LEGEND	
★	Trailhead
Ⓟ	Parking
Ⓜ	Restrooms
⋯	Natural Trail
① - ③④	Trail Intersections
♿	Accessible parking only
♿	Accessible portable toilet
■ ■ ■ ■	Hunter Safety Zone
✳	Scenic Overlook
■	Dock

Deer Archery Hunting Rules

- Trapping and firearms hunting is prohibited at all times within park boundaries without express consent of park authority.
- Permitted hunting will be in accordance with the laws of the Michigan Department of Natural Resources (MDNR).
- **450-FOOT SAFETY ZONES FOR RESIDENTIAL/COMMERCIAL AREAS ARE SIGNED AND STRICTLY ENFORCED ON OAKLAND COUNTY PARKS (OCP) PROPERTIES.**
- Park in designated lots only. Roadside parking around park perimeter prohibited.
- Vehicles in designated parking lots must display a valid annual/daily Oakland County Parks Motor Vehicle Permit.
- Hours: Half hour before sunrise to half hour after sunset, or as posted.
- Hikers, hunters, equestrians and bikers may share the park during the season. Please hunt responsibly.
- Deer harvested, and deer shot and not recovered, should be reported to park management within 24 hours.
- MDNR Baiting Regulations strictly enforced.
- SAFETY HARNESS USE IS STRONGLY RECOMMENDED.
- Tree stands, blinds and trail cameras may be present Sept. 1-March 1.
- Tree stands, blinds and trail cameras must be properly marked and comply with MDNR rules that state "your tree stand must be portable and your name and address, Michigan driver License number, or DNR sportcard number must be affixed in legible English that can be easily read from the ground".
- Use of bolts, screws and screw-in type steps are not allowed. Stands and associated equipment may not pierce trees.
- **Blinds may not be constructed from gathered natural materials. Please leave logs, branches and other materials undisturbed.**
- Parks personnel will remove any and all stands, blinds and equipment that are in violation of OCP or MDNR rules. Appropriated stands, blinds and equipment are placed in the Oakland County Auction on a rolling basis.
- No trail flagging material should be placed on trees, branches or other objects. Do not remove existing flagging.
- ABSOLUTELY no marking or defacing of any tree, plant, shrub, etc.
- Fires and overnight camping are not permitted at any time.
- Your help is important in keeping Oakland County Parks safe, clean and well-maintained.
- Report hunting-related incidents and accidents to 911.
- Report poaching and other illegal hunting activity to the MDNR R.A.P. Hotline at 1-800-292-7800.
- Report park vandalism and stand theft to 1-888-OCPARKS.

NOTE: Park entrance gate locks at dark; plan your hunt accordingly.

Safety Zone

 SCALE: 1"=1000'