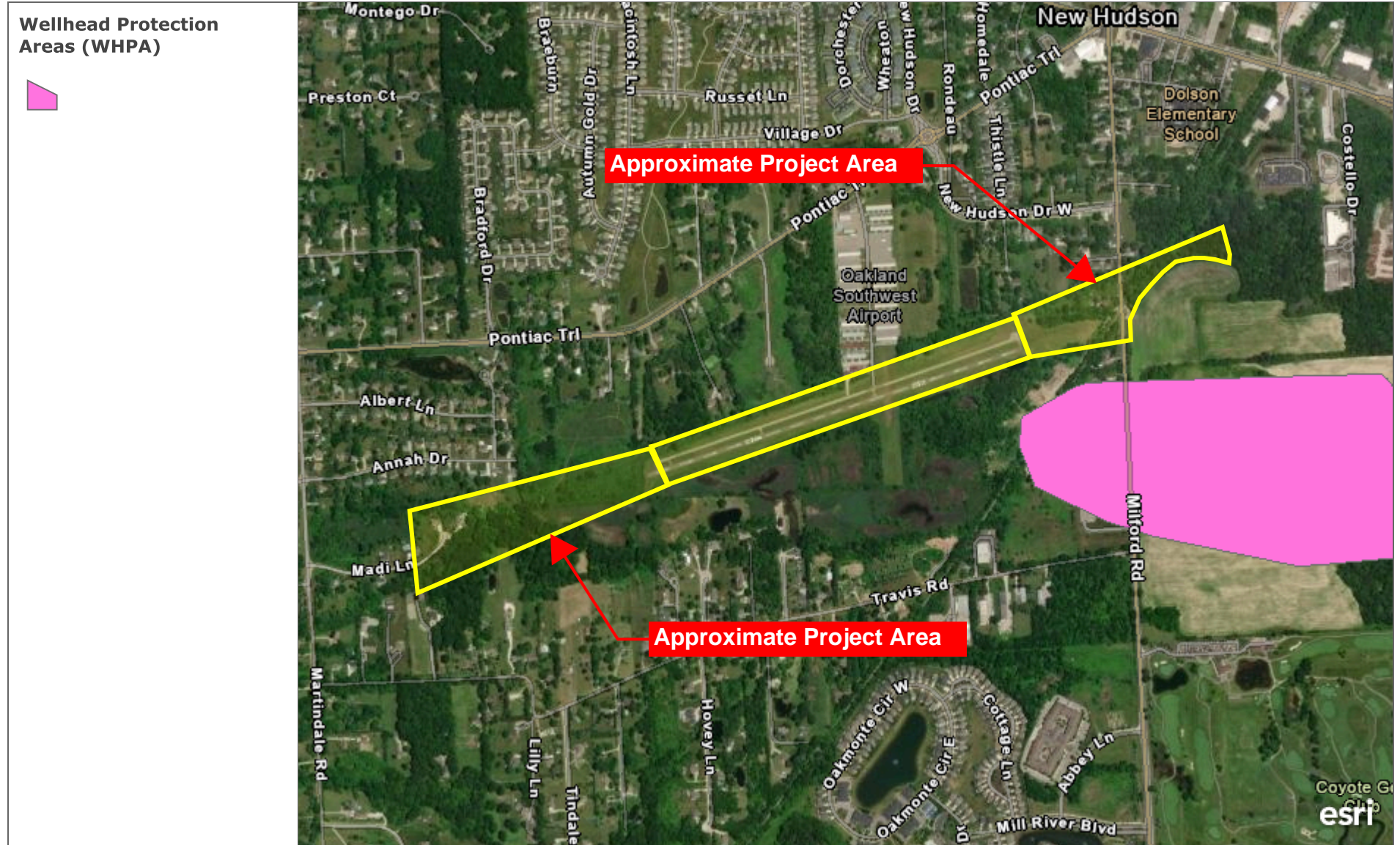

Appendix N – Groundwater

Wellhead Protection Areas (WHPA)



EGLE's source water protection program includes identification of areas where groundwater is used to supply drinking water to communities. A Wellhead Protection Area (WHPA) is the surface and subsurface area surrounding a water well or well field, supplying a public water system, through which contaminants are reasonably likely to move toward and reach such water well or well field. It is that area which contributes groundwater to a public water supply well.

Water Wells - South Central & Southeastern Michigan



Water wells from Wellogic, the EGLE statewide ground water database. This data is specific to south central and southeastern Michigan.

Maxar | Esri Community Maps Contributors, Province of Ontario, Oakland County, Michigan, SEMCOG, © OpenStreetMap, Microsoft, Esri, TomTom, Garmin, SafeGraph, GeoTechnologies, Inc, METI/NASA, USGS, EPA, NPS, US Census Bureau, USDA, USFWS