
Appendix D – Land Use and Zoning

Official Zoning Map

Charter Township of Lyon,
Oakland County, Michigan

March 2, 2022

LEGEND

- R-1.0 Residential-Agricultural District
- R-0.5 Single Family Residential
- R-0.3 Single Family Residential
- RM-1 Suburban Townhouse District
- RM-2 Multiple Family Residential
- MHP Mobile Home Residential District
- O-1 Office District
- B-2 Community Business District
- B-3 General Business District
- I-1 Light Industrial District
- I-2 General Industrial District
- PD Planned Development District
- RO Research Office District
- MU Mixed Use District
- CJ Consent Judgment
- New Hudson Core
- New Hudson Edge
- New Hudson Neighborhood
- Wellhead Protection Overlay District
- New Hudson Zoning District
- Woodside Acres Overlay District

The lines of this map are representational of the actual Township boundary and parcel lines and are not intended to be substituted for an official survey or used to resolve boundary or area discrepancies. Consult official Township of Lyon records for precise distances, boundaries, and areas.

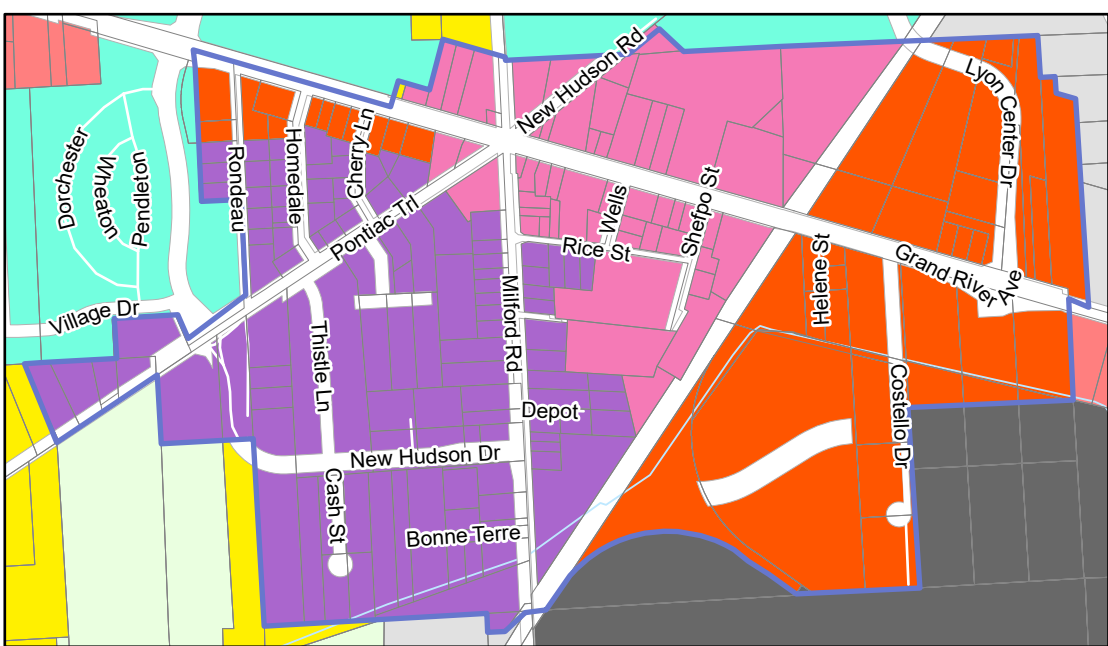
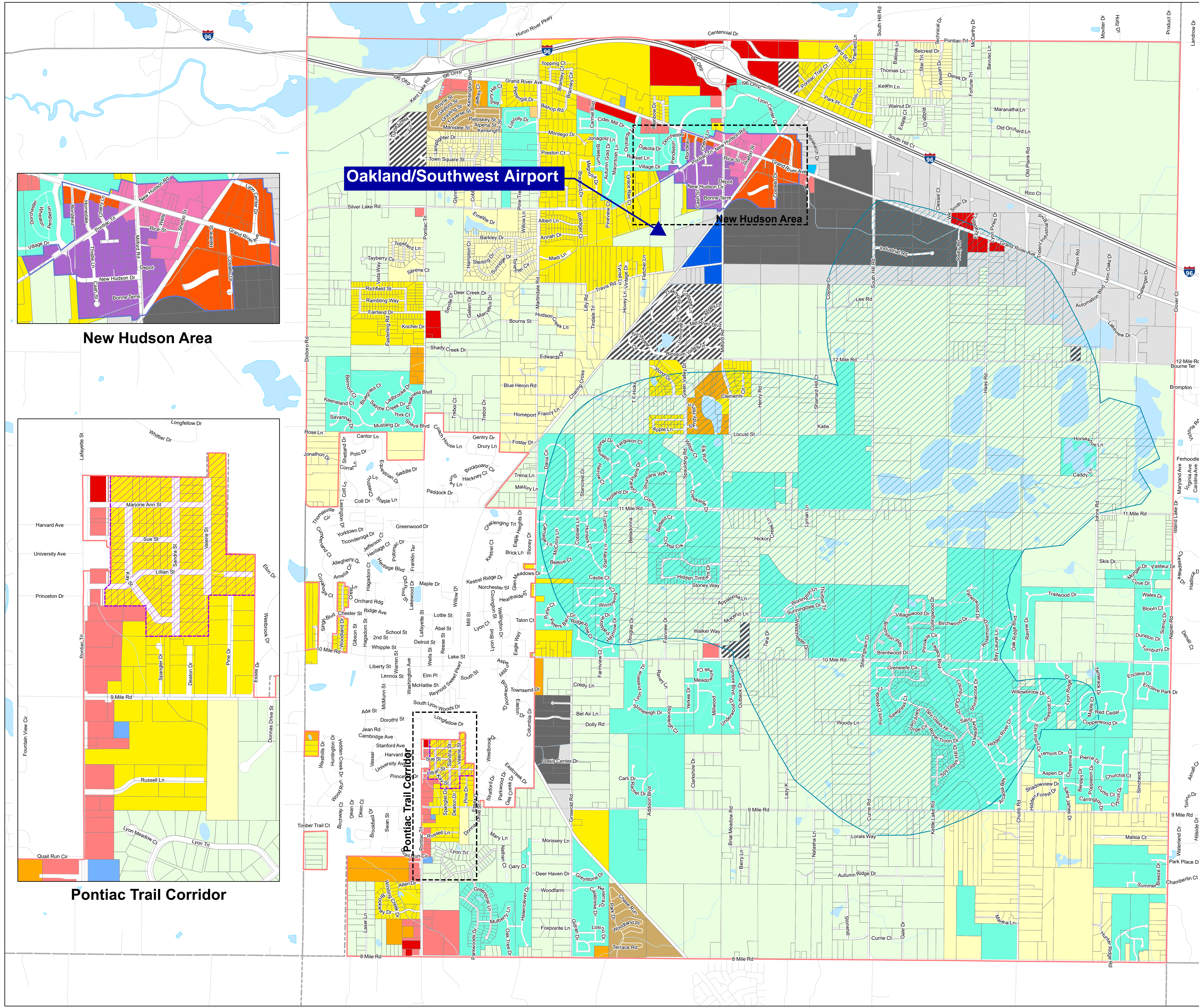
CERTIFICATION
I, Michele Cash, Township Clerk, Charter Township of Lyon, do hereby certify that this is a true copy of the map adopted by the Township Board for the Charter Township of Lyon, Oakland County, Michigan, as amended on the revision dates noted above.

Michele Cash, Clerk, Charter Township of Lyon, Michigan
Oakland County, Michigan

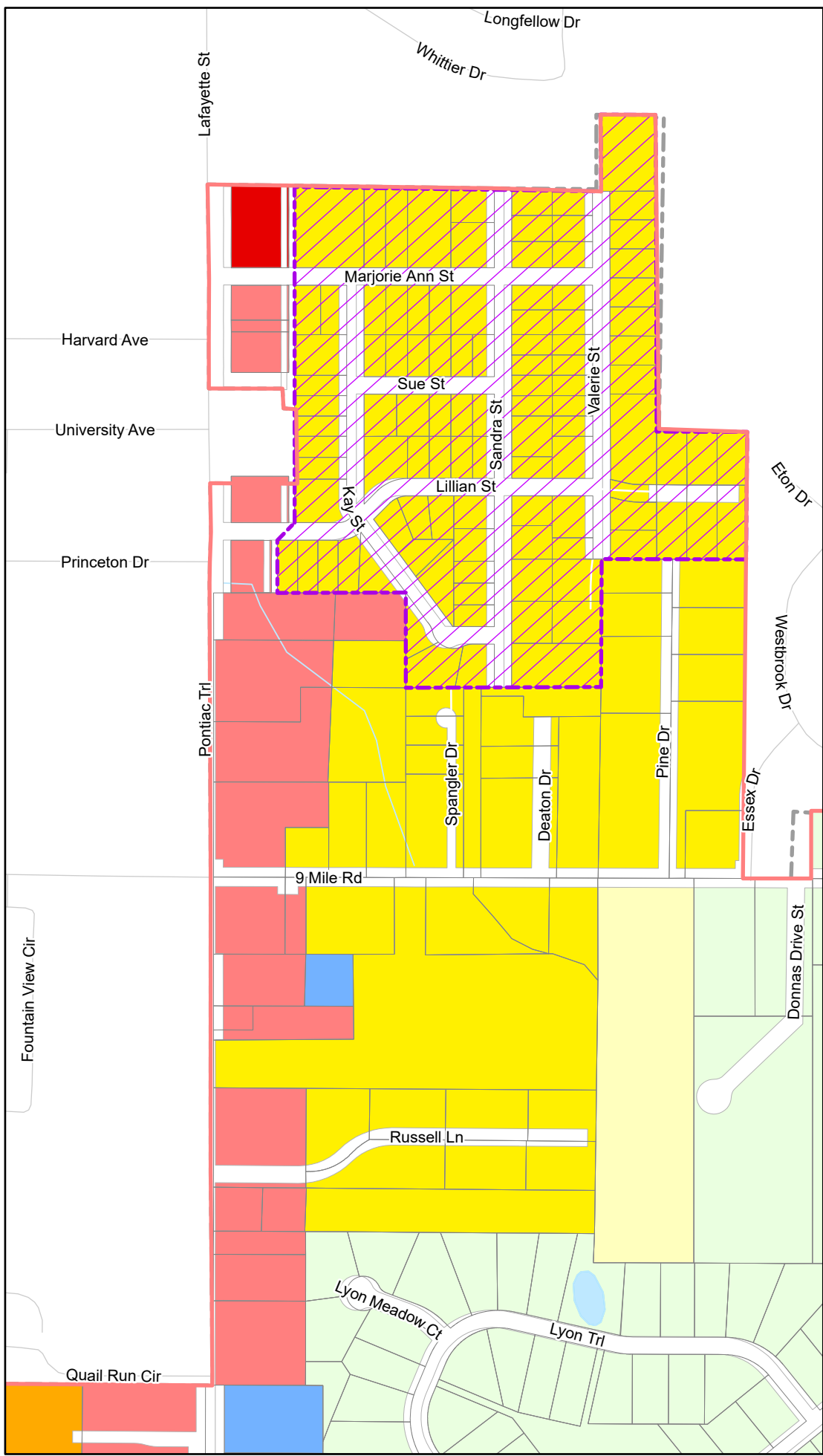
Date: _____



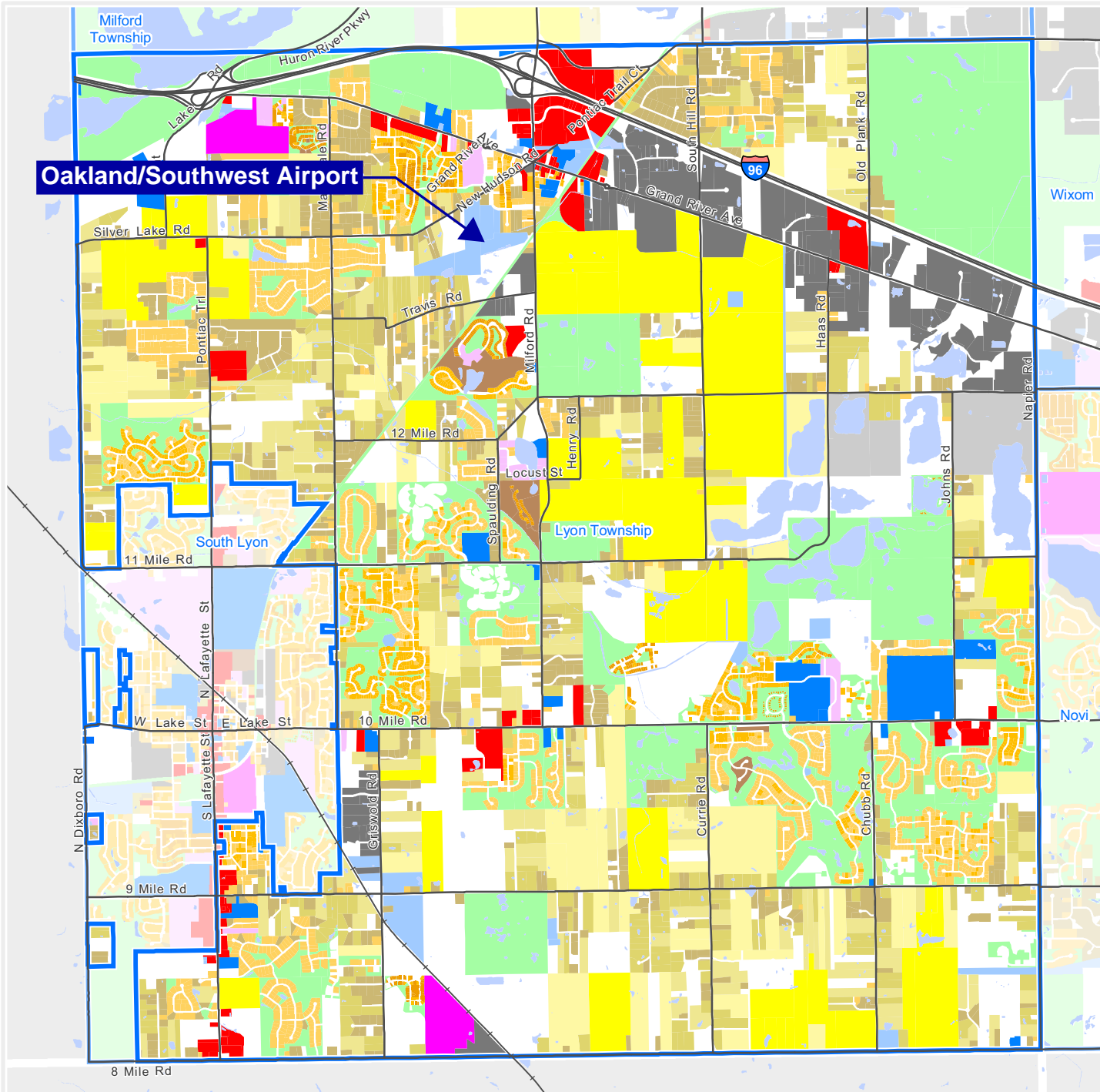
Basemap Source: Michigan Center for Geographic Information, Version 17a.
Data Source: Charter Township of Lyon 2020. McKenna 2020.



New Hudson Area



Pontiac Trail Corridor



OAKLAND
COUNTY MICHIGAN
ECONOMIC DEVELOPMENT

Executive Office Building
2100 Pontiac Lake Road, Bldg. 41W
Waterford, MI 48328-0412
248.858.0720
www.oakgov.com/luz

2021 Land Use

Township of Lyon

Legend

- Agricultural
- Single Family, 10 acres or greater
- Single Family, 5 to 9.9 acres
- Single Family, 2.5 to 4.9 acres
- Single Family, 1 to 2.4 acres
- Single Family, 14,000 to 43,559 sq. ft.
- Single Family, 8,000 to 13,999 sq. ft.
- Single Family, Less than 8,000 sq. ft.
- Single Family, More than one unit per parcel
- Multiple Family
- Mobile Home Park
- Commercial/Office
- Industrial
- Public/Institutional
- Recreation/Conservation
- Transportation/Utility/Communication
- Vacant
- Extractive

1 inch = 4,737 feet

The information provided herewith has been compiled from recorded deeds, plats, tax maps, surveys and other public records. It is not a legally recorded map or survey and is not intended to be used as one. Users should consult the information sources mentioned above when questions arise.