

2002



Apportionment of Local Tax Rates

December 2002

L. BROOKS PATTERSON OAKLAND COUNTY EXECUTIVE

2002 APPORTIONMENT REPORT OAKLAND COUNTY, MICHIGAN

Prepared By
**DEPARTMENT OF MANAGEMENT AND BUDGET
LAURIE VAN PELT, Director**

**EQUALIZATION DIVISION
DAVID M HIEBER, Manager**

Under the direction of the Finance Committee of the Board of Commissioners

**SUE ANN DOUGLAS
Chairperson**

**CHUCK MOSS
Majority Vice Chairperson**

**BRENDA A. CAUSEY-MITCHELL
Minority Vice Chairperson**

LAWRENCE A OBRECHT

MICHELLE FRIEDMAN APPEL

TIM W. MELTON

NANCY DINGELDAY

CHARLES E. PALMER

WILLIAM R. PATTERSON

SHELLEY G. TAUB

TABLE OF CONTENTS

2002 APPORTIONMENT OF LOCAL TAX RATES

LETTER OF TRANSMITTAL.....	i
OAKLAND COUNTY BOARD OF COMMISSIONERS	ii
RESOLUTION RECOMMENDING THE ADOPTION OF THE APPORTIONMENT REPORT OF LOCAL TAX RATES	iii
THE TOTAL ESTIMEATED TAX LEVEY FOR 2001 AD VALOREM PROPERTY TAXES.....	1
TOTAL CERTIFIED TAX RATES BY TOWNSHIPS	2-9
TOTAL CERTIFIED TAX RATES BY CITIES.....	10-17
TOWNSHIP AND VILLAGE CERTIFIED TAX RATES	18-19
CITY CERTIFIED TAX RATES	20-21
SCHOOL DISTRICT CERTIFIED TAX RATES.....	22-27
INTERMEDIATE SCHOOL DISTRICT CERTIFIED TAX RATES	28
COMMUNITY COLLEGE CERTIFIED TAX RATES	28
OAKLAND COUNTY GENERAL OPERATING CERTIFIED TAX RATES	28
OAKLAND COUNTY PARKS & RECREATION CERTIFIED TAX RATES	28
HURON CLINTON AUTHORITY CERTIFIED TAX RATES.....	28
OAKLAND COUNTY PUBLIC TRANSPORTATION AUTHORITY CERTIFIED TAX RATES	29

October 17, 2002

TO THE OAKLAND COUNTY BOARD OF COMMISSIONERS – FINANCE
COMMITTEE:

The attached Apportionment of Local Tax Rates was prepared by the Equalization Division of the Department of Management and Budget, under the supervision of the Oakland County Board of Commissioners Finance Committee.

The certificates, statements, papers and records submitted by the various townships, cities and villages were examined, and the enclosed rates represent a compilation of those documents. The certified rates, as adjusted by Headlee M.C.L. (Sections 211.34D, 211.34E), Truth in Assessing M.C.L. (Section 211.34), are set for all townships, cities, and villages in Oakland County.

Of special interest on page 1 is the Summary of the Estimated Tax Levy by the various taxing authorities. These recaps depict the average tax rate and estimated total levy.

The attached resolution, if passed by the Oakland County Board of Commissioners, will authorize the Equalization Director to sign the several tax certificates on which the attached tabulation was based. The action thereby authorizes and directs the various assessing officers to spread the rates against the 2002 taxable valuation.

If you have any questions or need further information, please contact my office.

Respectfully submitted,

David M. Hieber, Manager
Equalization Division
Department of Management and Budget

BY: THE FINANCE COMMITTEE, SUE ANN DOUGLAS, CHAIRPERSON
IN RE: MANAGEMENT & BUDGET DEPT - APPORTIONMENT OF LOCAL TAX RATES

TO THE OAKLAND COUNTY BOARD OF COMMISSIONERS

Chairperson, Ladies and Gentlemen:

WHEREAS your Finance Committee on Local Taxes has examined certificates, statements, papers and records submitted to it from the various townships, cities and villages having taxes to be spread upon the Tax Rolls, and has checked these documents with the pertinent laws, specifically Section 37 General Property Tax Laws, and has caused corrections to be made where necessary; and

WHEREAS your committee has prepared tax certificates showing the certified rates as adjusted by M.C.L. 211.24E, M.C.L. 211.34, M.C.L. 211.34D, and M.C.L. 211.34E of the General Property Tax Laws, authorized to be spread against state taxable valuations, which certificates are submitted herewith, and which are the basis for the tabulation above mentioned, and it is recommended that the Board of Commissioners authorize the Equalization Director to sign these certificates; and

WHEREAS the electorate of the State of Michigan amended Article IX of the constitution and added Section 36; and

WHEREAS the legislature, as directed, implemented said legislation under Section 37 of the General Property Tax Act and the 1976 State School Code, as amended; and

WHEREAS the certified rates are subject to M.C.L. 211.36 which allows additional millage to be voted up to and including December 7, 2002 for schools and, if adopted, up to and including November 5, 2002 for taxing jurisdictions, as specified in said section; said additional millage(s) would require Board approval before they could be spread; and

WHEREAS the electorate of the State of Michigan voted to limit school operating levies on homestead and non-homestead property taxes in accordance with this report;

NOW THEREFORE BE IT RESOLVED that the Oakland County Board of Commissioners adopt the attached certificates with the recommendations herein contained as part of the permanent records of the Board.

BE IT FURTHER RESOLVED that the Equalization Director be authorized and directed to sign the several tax certificates on which the attached tabulation was based, thereby authorizing and directing the various assessing officers to spread the rates against the taxable valuation set forth herein for 2002.

BE IT FURTHER RESOLVED that the Oakland County Board of Commissioners, in compliance with the General Property Tax Act and the 50 mill limitation, directs the Equalization Division to revise the apportionment report for 2002 as follows:

<u>Tax Authority</u>	<u>Previous Rate</u>	<u>Revised Rate</u>	<u>Reason for change</u>
Wayne Co. Reg. Education	1.9643	3.4643	Election
Birmingham School	10.2849	10.3006	Revision
Warren Cons. Schools	0.0000	7.4662	Correction
Township of Commerce	2.7349	3.8349	Election
Township of Royal Oak	6.8866	10.7166	Revision
Township of Waterford	10.5388	10.2719	Revision
Township of West Bloomfield	9.3751	9.5140	Revision
City of Rochester Hills	8.9295	9.3681	Election

Chairperson, on behalf of the Finance Committee, I move for the adoption of the foregoing resolution.

FINANCE COMMITTEE

Sue Ann Douglas, Chairperson

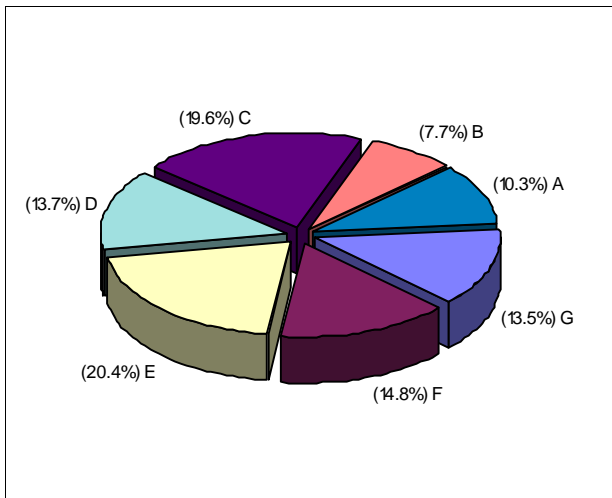
2002 APPORTIONMENT OF LOCAL TAXES

OAKLAND COUNTY, MICHIGAN

THE TOTAL TAX LEVY FOR 2002
AD VALOREM PROPERTY TAXES AND PERCENTAGE

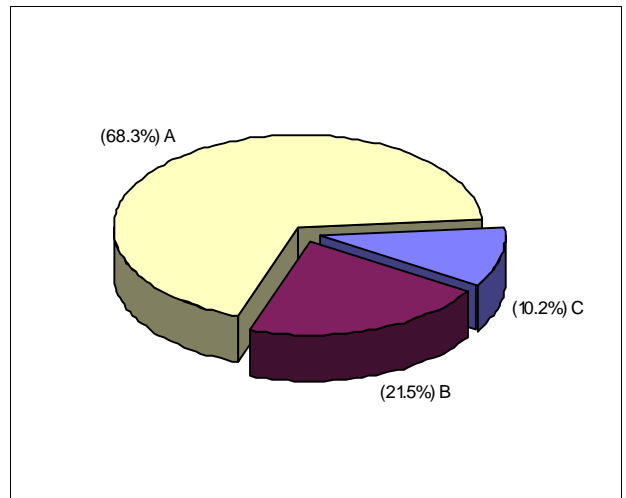
COUNTY OPERATING	212,411,059	10.32%
TOWNSHIPS & VILLAGES	158,711,788	7.71%
CITIES	403,192,215	19.58%
LOCAL SCHOOL DISTRICTS		
HOMESTEAD	281,934,429	13.69%
NON-HOMESTEAD	420,071,293	20.40%
STATE EDUCATION TAX	304,168,581	14.77%
MISCELLANEOUS		
INTERMEDIATE SCHOOLS	173,348,716	8.42%
COMMUNITY COLLEGES	81,663,904	3.97%
PARKS & RECREATION	12,435,426	0.60%
HURON CLINTON AUTHORITY	11,000,764	0.53%
TOTAL ESTIMATED TAXES	2,058,938,176	100.00%

$$\frac{\text{TOTAL TAX}}{\text{TOTAL TAXABLE VALUE}} = \frac{2,058,938,176}{50,694,763,579} = \$40.61 \text{ PER THOUSAND TAXABLE VALUE}$$



- A = COUNTY OPERATING
- B = TWP & VILLAGES
- C = CITIES
- D = HOMESTEAD
- E = NON-HOMESTEAD
- F = STATE EDUCATION TAX
- G = MISCELLANEOUS

2002 Breakdown of Estimated Tax Levy by Taxing Jurisdiction



- A = RESIDENTIAL, AGRICULTURAL & DEVELOPMENTAL
- B = COMMERCIAL
- C = INDUSTRIAL & UTILITIES

2002 Breakdown of Tax Base By Class of Property

TOTAL CERTIFIED TAX RATES BY TOWNSHIP

2002 APPORTIONMENT OF LOCAL TAX RATES IN OAKLAND COUNTY PER \$1000 OF TAXABLE VALUE

TOWNSHIP/SCHOOL DISTRICT	HOMESTEAD SCHOOL	NON-HOMESTEAD SCHOOL	INTERMED SCHOOL DISTRICT	COMM-UNITY COLLEGE	CITY VILLAGE TOWNSHIP	* COMBINED	HOMESTEAD TOTAL	NON-HOMESTEAD TOTAL
<u>TOWNSHIP OF ADDISON</u>								
150-LAKE ORION /OIS/OCC	13.4910	31.4910	3.4224	1.6090	7.4098	4.6523	30.5845	48.5845
200-OXFORD /OIS/OCC	13.0000	29.3326	3.4224	1.6090	7.4098	4.6523	30.0935	46.4261
400-ALMONT /LIS	14.4500	32.3113	3.0467		7.4098	4.6523	29.5588	47.4201
700-ROMEIO /MIS	12.6427	30.6427	2.9863		7.4098	4.6523	27.6911	45.6911
702-ROMEIO TRANSFER /MIS/OCC	12.4839	30.4839	2.9863	1.6090	7.4098	4.6523	29.1413	47.1413
<u>VILLAGE OF LEONARD</u>								
200-OXFORD /OIS/OCC	13.0000	29.3326	3.4224	1.6090	13.4098	4.6523	36.0935	52.4261
<u>CHARTER TOWNSHIP OF BLOOMFIELD</u>								
010-AVONDALE /OIS/OCC	14.6793	31.0000	3.4224	1.6090	8.0334	4.6523	32.3964	48.7171
030-BIRMINGHAM /OIS/OCC	17.7506	25.4500	3.4224	1.6090	8.0334	4.6523	35.4677	43.1671
034-BLM TWP VILLAGE SUB /OIS/OCC	17.7506	25.4500	3.4224	1.6090	8.0334	4.6523	35.4677	43.1671
040-BLOOMFIELD HILLS /OIS/OCC	15.0758	24.6700	3.4224	1.6090	8.0334	4.6523	32.7929	42.3871
210-PONTIAC /OIS/OCC	8.8000	26.8000	3.4224	1.6090	8.0334	4.6523	26.5171	44.5171
* COMBINED-CONSISTS OF:								
COUNTY OPERATING	4.1900							
PARKS AND RECREATION	0.2453							
HURON CLINTON AUTHORITY	<u>0.2170</u>							
TOTAL	4.6523							

TOTAL CERTIFIED TAX RATES BY TOWNSHIP

2002 APPORTIONMENT OF LOCAL TAX RATES IN OAKLAND COUNTY PER \$1000 OF TAXABLE VALUE

TOWNSHIP/SCHOOL DISTRICT	HOMESTEAD SCHOOL	NON-HOMESTEAD SCHOOL	INTERMED SCHOOL DISTRICT	COMM-UNITY COLLEGE	CITY VILLAGE TOWNSHIP	* COMBINED	HOMESTEAD TOTAL	NON-HOMESTEAD TOTAL
<u>CHARTER TOWNSHIP OF BRANDON</u>								
050-BRANDON /OIS/OCC	14.2400	30.2118	3.4224	1.6090	5.9591	4.6523	29.8828	45.8546
055-BRANDON TIFA PP /OIS/OCC	14.2400	30.2118	3.4224	1.6090	5.9591	4.6523	29.8828	45.8546
059-BRANDON PP /OIS/OCC	14.2400	30.2118	3.4224	1.6090	5.9591	4.6523	29.8828	45.8546
200-OXFORD /OIS/OCC	13.0000	29.3326	3.4224	1.6090	5.9591	4.6523	28.6428	44.9754
202-OXFORD TRANSFER /OIS/OCC	13.0000	29.3326	3.4224	1.6090	5.9591	4.6523	28.6428	44.9754
209-OXFORD PP /OIS/OCC	13.0000	29.3326	3.4224	1.6090	5.9591	4.6523	28.6428	44.9754
<u>VILLAGE OF ORTONVILLE</u>								
050-BRANDON /OIS/OCC	14.2400	30.2118	3.4224	1.6090	13.9591	4.6523	37.8828	53.8546
054-BRANDON TIFA /OIS/OCC	14.2400	30.2118	3.4224	1.6090	13.9591	4.6523	37.8828	53.8546
055-BRANDON TIFA PP /OIS/OCC	14.2400	30.2118	3.4224	1.6090	13.9591	4.6523	37.8828	53.8546
059-BRANDON PP /OIS/OCC	14.2400	30.2118	3.4224	1.6090	13.9591	4.6523	37.8828	53.8546
<u>CHARTER TOWNSHIP OF COMMERCE</u>								
140-HURON VALLEY /OIS/OCC	13.9781	31.7699	3.4224	1.6090	3.8349	4.6523	27.4967	45.2885
270-WALLED LAKE /OIS/OCC	13.4728	28.9884	3.4224	1.6090	3.8349	4.6523	26.9914	42.5070
279-WALLED LAKE TIFA-B /OIS/OCC	13.4728	28.9884	3.4224	1.6090	3.8349	4.6523	26.9914	42.5070
<u>VILLAGE OF WOLVERINE LAKE</u>								
270-WALLED LAKE /OIS/OCC	13.4728	28.9884	3.4224	1.6090	13.4049	4.6523	36.5614	52.0770

* SEE PAGE 2

TOTAL CERTIFIED TAX RATES BY TOWNSHIP

2002 APPORTIONMENT OF LOCAL TAX RATES IN OAKLAND COUNTY PER \$1000 OF TAXABLE VALUE

TOWNSHIP/SCHOOL DISTRICT	HOMESTEAD SCHOOL	NON-HOMESTEAD SCHOOL	INTERMED SCHOOL DISTRICT	COMM-UNITY COLLEGE	CITY VILLAGE TOWNSHIP	* COMBINED	HOMESTEAD TOTAL	NON-HOMESTEAD TOTAL
<u>TOWNSHIP OF GROVELAND</u>								
050-BRANDON /OIS/OCC	14.2400	30.2118	3.4224	1.6090	4.5000	4.6523	28.4237	44.3955
058-GDR TO BRAN TRAN 5/26/98 /GIS/MCC	9.5560	25.5278	3.5673	2.8280	4.5000	4.6523	25.1036	41.0754
130-HOLLY /OIS/OCC	13.0000	31.0000	3.4224	1.6090	4.5000	4.6523	27.1837	45.1837
500-GOODRICH /GIS/MCC	13.7500	31.7473	3.5673	2.8280	4.5000	4.6523	29.2976	47.2949
<u>CHARTER TOWNSHIP OF HIGHLAND</u>								
140-HURON VALLEY /OIS/OCC	13.9781	31.7699	3.4224	1.6090	6.4241	4.6523	30.0859	47.8777
144-HURON VALLEY DDA CVT H /OIS/OCC	13.9781	31.7699	3.4224	1.6090	6.4241	4.6523	30.0859	47.8777
<u>TOWNSHIP OF HOLLY</u>								
130-HOLLY /OIS/OCC	13.0000	31.0000	3.4224	1.6090	2.5000	4.6523	25.1837	43.1837
550-GRAND BLANC /GIS/MCC	8.7872	26.5352	3.5673	2.8280	2.5000	4.6523	22.3348	40.0828
<u>VILLAGE OF HOLLY</u>								
130-HOLLY /OIS/OCC	13.0000	31.0000	3.4224	1.6090	18.7183	4.6523	41.4020	59.4020
131-HOLLY TIFA /OIS/OCC	13.0000	31.0000	3.4224	1.6090	18.7183	4.6523	41.4020	59.4020
<u>CHARTER TOWNSHIP OF INDEPENDENCE</u>								
070-CLARKSTON /OIS/OCC	13.0000	31.0000	3.4224	1.6090	6.8564	4.6523	29.5401	47.5401
150-LAKE ORION /OIS/OCC	13.4910	31.4910	3.4224	1.6090	6.8564	4.6523	30.0311	48.0311
280-WATERFORD /OIS/OCC	9.1700	27.1700	3.4224	1.6090	6.8564	4.6523	25.7101	43.7101

* SEE PAGE 2

TOTAL CERTIFIED TAX RATES BY TOWNSHIP

2002 APPORTIONMENT OF LOCAL TAX RATES IN OAKLAND COUNTY PER \$1000 OF TAXABLE VALUE

TOWNSHIP/SCHOOL DISTRICT	HOMESTEAD SCHOOL	NON-HOMESTEAD SCHOOL	INTERMED SCHOOL DISTRICT	COMM-UNITY COLLEGE	CITY VILLAGE TOWNSHIP	* COMBINED	HOMESTEAD TOTAL	NON-HOMESTEAD TOTAL
<u>CHARTER TOWNSHIP OF LYON</u>								
240-SOUTH LYON /OIS/OCC	14.0000	32.0000	3.4224	1.6090	4.7761	4.6523	28.4598	46.4598
242-SOUTH LYON DDA1 /OIS/OCC	14.0000	32.0000	3.4224	1.6090	4.7761	4.6523	28.4598	46.4598
243-SOUTH LYON DDA2 /OIS/OCC	14.0000	32.0000	3.4224	1.6090	4.7761	4.6523	28.4598	46.4598
650-NORTHVILLE /WIS/SCC	10.7800	28.7800	3.4643	1.8043	4.7761	4.6523	25.4770	43.4770
<u>CHARTER TOWNSHIP OF MILFORD</u>								
140-HURON VALLEY /OIS/OCC	13.9781	31.7699	3.4224	1.6090	7.1196	4.6523	30.7814	48.5732
143-HURON VALLEY ACT 189 /OIS/OCC	13.9781	31.7699	3.4224	1.6090	7.1196	4.6523	30.7814	48.5732
240-SOUTH LYON /OIS/OCC	14.0000	32.0000	3.4224	1.6090	7.1196	4.6523	30.8033	48.8033
<u>VILLAGE OF MILFORD</u>								
140-HURON VALLEY /OIS/OCC	13.9781	31.7699	3.4224	1.6090	16.2630	4.6523	39.9248	57.7166
141-MILFORD VILLAGE DDA /OIS/OCC	13.9781	31.7699	3.4224	1.6090	18.1758	4.6523	41.8376	59.6294
<u>TOWNSHIP OF NOVI</u>								
650-NORTHVILLE /WIS/SCC	10.7800	28.7800	3.4643	1.8043	3.5734	4.6523	24.2743	42.2743
<u>CHARTER TOWNSHIP OF OAKLAND</u>								
150-LAKE ORION /OIS/OCC	13.4910	31.4910	3.4224	1.6090	6.3805	4.6523	29.5552	47.5552
220-ROCHESTER /OIS/OCC	11.2250	29.2250	3.4224	1.6090	6.3805	4.6523	27.2892	45.2892
700-ROMEIO /MIS	12.6427	30.6427	2.9863		6.3805	4.6523	26.6618	44.6618

* SEE PAGE 2

TOTAL CERTIFIED TAX RATES BY TOWNSHIP

2002 APPORTIONMENT OF LOCAL TAX RATES IN OAKLAND COUNTY PER \$1000 OF TAXABLE VALUE

TOWNSHIP/SCHOOL DISTRICT	HOMESTEAD SCHOOL	NON-HOMESTEAD SCHOOL	INTERMED SCHOOL DISTRICT	COMM-UNITY COLLEGE	CITY VILLAGE TOWNSHIP	* COMBINED	HOMESTEAD TOTAL	NON-HOMESTEAD TOTAL
<u>CHARTER TOWNSHIP OF ORION</u>								
070-CLARKSTON /OIS/OCC	13.0000	31.0000	3.4224	1.6090	5.5934	4.6523	28.2771	46.2771
150-LAKE ORION /OIS/OCC	13.4910	31.4910	3.4224	1.6090	5.5934	4.6523	28.7681	46.7681
210-PONTIAC /OIS/OCC	8.8000	26.8000	3.4224	1.6090	5.5934	4.6523	24.0771	42.0771
220-ROCHESTER /OIS/OCC	11.2250	29.2250	3.4224	1.6090	5.5934	4.6523	26.5021	44.5021
<u>VILLAGE OF LAKE ORION</u>								
150-LAKE ORION /OIS/OCC	13.4910	31.4910	3.4224	1.6090	18.4692	4.6523	41.6439	59.6439
<u>CHARTER TOWNSHIP OF OXFORD</u>								
150-LAKE ORION /OIS/OCC	13.4910	31.4910	3.4224	1.6090	9.3296	4.6523	32.5043	50.5043
200-OXFORD /OIS/OCC	13.0000	29.3326	3.4224	1.6090	9.3296	4.6523	32.0133	48.3459
<u>VILLAGE OF OXFORD</u>								
200-OXFORD /OIS/OCC	13.0000	29.3326	3.4224	1.6090	17.5585	4.6523	40.2422	56.5748
205-OXFORD VILLAGE DDA /OIS/OCC	13.0000	29.3326	3.4224	1.6090	17.5585	4.6523	40.2422	56.5748
<u>TOWNSHIP OF ROSE</u>								
130-HOLLY /OIS/OCC	13.0000	31.0000	3.4224	1.6090	2.5432	4.6523	25.2269	43.2269
450-FENTON /GIS/MCC	13.6127	31.4039	3.5673	2.8280	2.5432	4.6523	27.2035	44.9947
<u>VILLAGE OF HOLLY</u>								
130-HOLLY /OIS/OCC	13.0000	31.0000	3.4224	1.6090	18.7615	4.6523	41.4452	59.4452

* SEE PAGE 2

TOTAL CERTIFIED TAX RATES BY TOWNSHIP

2002 APPORTIONMENT OF LOCAL TAX RATES IN OAKLAND COUNTY PER \$1000 OF TAXABLE VALUE

TOWNSHIP/SCHOOL DISTRICT	HOMESTEAD SCHOOL	NON-HOMESTEAD SCHOOL	INTERMED SCHOOL DISTRICT	COMM-UNITY COLLEGE	CITY VILLAGE TOWNSHIP	* COMBINED	HOMESTEAD TOTAL	NON-HOMESTEAD TOTAL
<u>CHARTER TOWNSHIP OF ROYAL OAK</u>								
020-BERKLEY /OIS/OCC	10.3700	28.3700	3.4224	1.6090	10.7166	4.6523	30.7703	48.7703
022-BERKLEY R.O.T. PP /OIS/OCC	10.3700	28.3700	3.4224	1.6090	10.7166	4.6523	30.7703	48.7703
110-FERNDALÉ /OIS/OCC	13.0000	31.0000	3.4224	1.6090	10.7166	4.6523	33.4003	51.4003
111-FERNDALÉ R.O.T. PP /OIS/OCC	13.0000	31.0000	3.4224	1.6090	10.7166	4.6523	33.4003	51.4003
118-FERNDALÉ PP DDA /OIS/OCC	13.0000	31.0000	3.4224	1.6090	10.7166	4.6523	33.4003	51.4003
119-FERNDALÉ DDA /OIS/OCC	13.0000	31.0000	3.4224	1.6090	10.7166	4.6523	33.4003	51.4003
190-OAK PARK /OIS/OCC	14.1729	32.1512	3.4224	1.6090	10.7166	4.6523	34.5732	52.5515
191-OAK PARK R.O.T. PP /OIS/OCC	14.1729	32.1512	3.4224	1.6090	10.7166	4.6523	34.5732	52.5515
198-OAK PARK DDA PP /OIS/OCC	14.1729	32.1512	3.4224	1.6090	10.7166	4.6523	34.5732	52.5515
199-OAK PARK DDA /OIS/OCC	14.1729	32.1512	3.4224	1.6090	10.7166	4.6523	34.5732	52.5515
<u>TOWNSHIP OF SOUTHFIELD</u>								
030-BIRMINGHAM /OIS/OCC	17.7506	25.4500	3.4224	1.6090	0.5500	4.6523	27.9843	35.6837
250-SOUTHFIELD /OIS/OCC	28.8945	28.8945	3.4224	1.6090	0.5500	4.6523	39.1282	39.1282
<u>VILLAGE OF BINGHAM FARMS</u>								
030-BIRMINGHAM /OIS/OCC	17.7506	25.4500	3.4224	1.6090	7.9500	4.6523	35.3843	43.0837
250-SOUTHFIELD /OIS/OCC	28.8945	28.8945	3.4224	1.6090	7.9500	4.6523	46.5282	46.5282
<u>VILLAGE OF FRANKLIN</u>								
030-BIRMINGHAM /OIS/OCC	17.7506	25.4500	3.4224	1.6090	10.7002	4.6523	38.1345	45.8339
<u>VILLAGE OF BEVERLY HILLS</u>								
030-BIRMINGHAM /OIS/OCC	17.7506	25.4500	3.4224	1.6090	14.0752	4.6523	41.5095	49.2089

* SEE PAGE 2

TOTAL CERTIFIED TAX RATES BY TOWNSHIP

2002 APPORTIONMENT OF LOCAL TAX RATES IN OAKLAND COUNTY PER \$1000 OF TAXABLE VALUE

TOWNSHIP/SCHOOL DISTRICT	HOMESTEAD SCHOOL	NON-HOMESTEAD SCHOOL	INTERMED SCHOOL DISTRICT	COMM-UNITY COLLEGE	CITY VILLAGE TOWNSHIP	* COMBINED	HOMESTEAD TOTAL	NON-HOMESTEAD TOTAL
<u>CHARTER TOWNSHIP OF SPRINGFIELD</u>								
050-BRANDON /OIS/OCC	14.2400	30.2118	3.4224	1.6090	4.8220	4.6523	28.7457	44.7175
070-CLARKSTON /OIS/OCC	13.0000	31.0000	3.4224	1.6090	4.8220	4.6523	27.5057	45.5057
130-HOLLY /OIS/OCC	13.0000	31.0000	3.4224	1.6090	4.8220	4.6523	27.5057	45.5057
<u>CHARTER TOWNSHIP OF WATERFORD</u>								
070-CLARKSTON /OIS/OCC	13.0000	31.0000	3.4224	1.6090	10.2719	4.6523	32.9556	50.9556
210-PONTIAC /OIS/OCC	8.8000	26.8000	3.4224	1.6090	10.2719	4.6523	28.7556	46.7556
280-WATERFORD /OIS/OCC	9.1700	27.1700	3.4224	1.6090	10.2719	4.6523	29.1256	47.1256
<u>CHARTER TOWNSHIP OF WEST BLOOMFIELD</u>								
030-BIRMINGHAM /OIS/OCC	17.7506	25.4500	3.4224	1.6090	9.5140	4.6523	36.9483	44.6477
040-BLOOMFIELD HILLS /OIS/OCC	15.0758	24.6700	3.4224	1.6090	9.5140	4.6523	34.2735	43.8677
100-FARMINGTON /OIS/OCC	18.4459	25.9388	3.4224	1.6090	9.5140	4.6523	37.6436	45.1365
210-PONTIAC /OIS/OCC	8.8000	26.8000	3.4224	1.6090	9.5140	4.6523	27.9977	45.9977
270-WALLED LAKE /OIS/OCC	13.4728	28.9884	3.4224	1.6090	9.5140	4.6523	32.6705	48.1861
280-WATERFORD /OIS/OCC	9.1700	27.1700	3.4224	1.6090	9.5140	4.6523	28.3677	46.3677
290-WEST BLOOMFIELD /OIS/OCC	16.3924	29.9570	3.4224	1.6090	9.5140	4.6523	35.5901	49.1547

* SEE PAGE 2

TOTAL CERTIFIED TAX RATES BY TOWNSHIP

2002 APPORTIONMENT OF LOCAL TAX RATES IN OAKLAND COUNTY PER \$1000 OF TAXABLE VALUE

TOWNSHIP/SCHOOL DISTRICT	HOMESTEAD SCHOOL	NON-HOMESTEAD SCHOOL	INTERMED SCHOOL DISTRICT	COMM-UNITY COLLEGE	CITY VILLAGE TOWNSHIP	* COMBINED	HOMESTEAD TOTAL	NON-HOMESTEAD TOTAL
<u>CHARTER TOWNSHIP OF WHITE LAKE</u>								
070-CLARKSTON /OIS/OCC	13.0000	31.0000	3.4224	1.6090	6.2628	4.6523	28.9465	46.9465
130-HOLLY /OIS/OCC	13.0000	31.0000	3.4224	1.6090	6.2628	4.6523	28.9465	46.9465
140-HURON VALLEY /OIS/OCC	13.9781	31.7699	3.4224	1.6090	6.2628	4.6523	29.9246	47.7164
270-WALLED LAKE /OIS/OCC	13.4728	28.9884	3.4224	1.6090	6.2628	4.6523	29.4193	44.9349
280-WATERFORD /OIS/OCC	9.1700	27.1700	3.4224	1.6090	6.2628	4.6523	25.1165	43.1165

* SEE PAGE 2

TOTAL CERTIFIED TAX RATES BY CITY

2002 APPORTIONMENT OF LOCAL TAX RATES IN OAKLAND COUNTY PER \$1000 OF TAXABLE VALUE

CITY/SCHOOL DISTRICT	HOMESTEAD SCHOOL	NON-HOMESTEAD SCHOOL	INTERMED SCHOOL DISTRICT	COMM-UNITY COLLEGE	CITY VILLAGE TOWNSHIP	* COMBINED	HOMESTEAD TOTAL	NON-HOMESTEAD TOTAL
<u>CITY OF AUBURN HILLS</u>								
010-AVONDALE /OIS/OCC	14.6793	31.0000	3.4224	1.6090	11.5877	4.6523	35.9507	52.2714
015-AVONDALE TIFA A /OIS/OCC	14.6793	31.0000	3.4224	1.6090	11.5877	4.6523	35.9507	52.2714
01B-AVONDALE BROWNFIELD /OIS/OCC	14.6793	31.0000	3.4224	1.6090	11.5877	4.6523	35.9507	52.2714
150-LAKE ORION /OIS/OCC	13.4910	31.4910	3.4224	1.6090	11.5877	4.6523	34.7624	52.7624
152-LAKE ORION TRANSFER /OIS/OCC	16.2910	34.2910	3.4224	1.6090	11.5877	4.6523	37.5624	55.5624
210-PONTIAC /OIS/OCC	8.8000	26.8000	3.4224	1.6090	11.5877	4.6523	30.0714	48.0714
215-PONTIAC TIFA B /OIS/OCC	8.8000	26.8000	3.4224	1.6090	11.5877	4.6523	30.0714	48.0714
216-PONTIAC TIFA A /OIS/OCC	8.8000	26.8000	3.4224	1.6090	11.5877	4.6523	30.0714	48.0714
217-PONTIAC TIFA D /OIS/OCC	8.8000	26.8000	3.4224	1.6090	11.5877	4.6523	30.0714	48.0714
218-PONTIAC LDFA /OIS/OCC	8.8000	26.8000	3.4224	1.6090	11.5877	4.6523	30.0714	48.0714
21B-PONTIAC BROWNFIELD /OIS/OCC	8.8000	26.8000	3.4224	1.6090	11.5877	4.6523	30.0714	48.0714
220-ROCHESTER /OIS/OCC	11.2250	29.2250	3.4224	1.6090	11.5877	4.6523	32.4964	50.4964
<u>CITY OF BERKLEY</u>								
020-BERKLEY /OIS/OCC	10.3700	28.3700	3.4224	1.6090	14.3260	4.6523	34.3797	52.3797
025-BERKLEY DDA /OIS/OCC	10.3700	28.3700	3.4224	1.6090	16.2960	4.6523	36.3497	54.3497
230-ROYAL OAK /OIS/OCC	14.1500	27.2061	3.4224	1.6090	14.3260	4.6523	38.1597	51.2158
<u>CITY OF BIRMINGHAM</u>								
030-BIRMINGHAM /OIS/OCC	17.7506	25.4500	3.4224	1.6090	15.4690	4.6523	42.9033	50.6027
<u>CITY OF BLOOMFIELD HILLS</u>								
030-BIRMINGHAM /OIS/OCC	17.7506	25.4500	3.4224	1.6090	7.5500	4.6523	34.9843	42.6837
040-BLOOMFIELD HILLS /OIS/OCC	15.0758	24.6700	3.4224	1.6090	7.5500	4.6523	32.3095	41.9037

* SEE PAGE 2

TOTAL CERTIFIED TAX RATES BY CITY

2002 APPORTIONMENT OF LOCAL TAX RATES IN OAKLAND COUNTY PER \$1000 OF TAXABLE VALUE

CITY/SCHOOL DISTRICT	HOMESTEAD SCHOOL	NON-HOMESTEAD SCHOOL	INTERMED SCHOOL DISTRICT	COMM-UNITY COLLEGE	CITY VILLAGE TOWNSHIP	* COMBINED	HOMESTEAD TOTAL	NON-HOMESTEAD TOTAL
<u>CITY OF CLARKSTON VILLAGE</u>								
070-CLARKSTON /OIS/OCC	13.0000	31.0000	3.4224	1.6090	18.5350	4.6523	41.2187	59.2187
<u>CITY OF CLAWSON</u>								
080-CLAWSON /OIS/OCC	15.5773	32.6231	3.4224	1.6090	14.1917	4.6523	39.4527	56.4985
089-CLAWSON DDA /OIS/OCC	15.5773	32.6231	3.4224	1.6090	14.1917	4.6523	39.4527	56.4985
<u>CITY OF FARMINGTON</u>								
100-FARMINGTON /OIS/OCC	18.4459	25.9388	3.4224	1.6090	16.3139	4.6523	44.4435	51.9364
101-FARMINGTON DDA /OIS/OCC	18.4459	25.9388	3.4224	1.6090	18.2844	4.6523	46.4140	53.9069
<u>CITY OF FARMINGTON HILLS</u>								
060-CLARENCEVILLE /OIS/SCC	10.7551	27.8907	3.4224	1.8043	11.4108	4.6523	32.0449	49.1805
100-FARMINGTON /OIS/OCC	18.4459	25.9388	3.4224	1.6090	11.4108	4.6523	39.5404	47.0333
270-WALLED LAKE /OIS/OCC	13.4728	28.9884	3.4224	1.6090	11.4108	4.6523	34.5673	50.0829
<u>CITY OF FERNDALE</u>								
110-FERNDALE /OIS/OCC	13.0000	31.0000	3.4224	1.6090	26.1031	4.6523	48.7868	66.7868
112-FERNDALE TIFA /OIS/OCC	13.0000	31.0000	3.4224	1.6090	27.5900	4.6523	50.2737	68.2737
113-FERNDALE-24-DDA /OIS/OCC	13.0000	31.0000	3.4224	1.6090	27.5900	4.6523	50.2737	68.2737
120-HAZEL PARK /OIS/OCC	13.0000	30.7721	3.4224	1.6090	26.1031	4.6523	48.7868	66.5589

* SEE PAGE 2

TOTAL CERTIFIED TAX RATES BY CITY

2002 APPORTIONMENT OF LOCAL TAX RATES IN OAKLAND COUNTY PER \$1000 OF TAXABLE VALUE

CITY/SCHOOL DISTRICT	HOMESTEAD SCHOOL	NON-HOMESTEAD SCHOOL	INTERMED SCHOOL DISTRICT	COMM-UNITY COLLEGE	CITY VILLAGE TOWNSHIP	* COMBINED	HOMESTEAD TOTAL	NON-HOMESTEAD TOTAL
<u>CITY OF HAZEL PARK</u>								
120-HAZEL PARK /OIS/OCC	13.0000	30.7721	3.4224	1.6090	22.5915	4.6523	45.2752	63.0473
125-HAZEL PARK DDA 3A /OIS/OCC	13.0000	30.7721	3.4224	1.6090	22.5915	4.6523	45.2752	63.0473
126-HAZEL PARK DDA-4 /OIS/OCC	13.0000	30.7721	3.4224	1.6090	22.5915	4.6523	45.2752	63.0473
127-HAZEL PARK DDA 2 /OIS/OCC	13.0000	30.7721	3.4224	1.6090	22.5915	4.6523	45.2752	63.0473
128-HAZEL PARK DDA 3 /OIS/OCC	13.0000	30.7721	3.4224	1.6090	22.5915	4.6523	45.2752	63.0473
129-HAZEL PARK DDA /OIS/OCC	13.0000	30.7721	3.4224	1.6090	22.5915	4.6523	45.2752	63.0473
<u>CITY OF HUNTINGTON WOODS</u>								
020-BERKLEY /OIS/OCC	10.3700	28.3700	3.4224	1.6090	20.8439	4.6523	40.8976	58.8976
230-ROYAL OAK /OIS/OCC	14.1500	27.2061	3.4224	1.6090	20.8439	4.6523	44.6776	57.7337
<u>CITY OF KEEGO HARBOR</u>								
290-WEST BLOOMFIELD /OIS/OCC	16.3924	29.9570	3.4224	1.6090	14.5882	4.6523	40.6643	54.2289
299-KEEGO HARBOR TIFA /OIS/OCC	16.3924	29.9570	3.4224	1.6090	14.5882	4.6523	40.6643	54.2289
<u>CITY OF LAKE ANGELUS</u>								
210-PONTIAC /OIS/OCC	8.8000	26.8000	3.4224	1.6090	9.9571	4.6523	28.4408	46.4408
280-WATERFORD /OIS/OCC	9.1700	27.1700	3.4224	1.6090	9.9571	4.6523	28.8108	46.8108
<u>CITY OF LATHRUP VILLAGE</u>								
250-SOUTHFIELD /OIS/OCC	28.8945	28.8945	3.4224	1.6090	17.7215	4.6523	56.2997	56.2997
258-STHFLD-LATHRUP DDA /OIS/OCC	28.8945	28.8945	3.4224	1.6090	19.4232	4.6523	58.0014	58.0014
259-SOUTHFLD/40/DDA /OIS/OCC	28.8945	28.8945	3.4224	1.6090	19.4232	4.6523	58.0014	58.0014

* SEE PAGE 2

TOTAL CERTIFIED TAX RATES BY CITY

2002 APPORTIONMENT OF LOCAL TAX RATES IN OAKLAND COUNTY PER \$1000 OF TAXABLE VALUE

CITY/SCHOOL DISTRICT	HOMESTEAD SCHOOL	NON-HOMESTEAD SCHOOL	INTERMED SCHOOL DISTRICT	COMM-UNITY COLLEGE	CITY VILLAGE TOWNSHIP	* COMBINED	HOMESTEAD TOTAL	NON-HOMESTEAD TOTAL
<u>CITY OF MADISON HEIGHTS</u>								
160-LAMPHERE /OIS/OCC	24.3993	27.8993	3.4224	1.6090	16.4872	4.6523	50.5702	54.0702
170-MADISON /OIS/OCC	12.4000	30.4000	3.4224	1.6090	16.4872	4.6523	38.5709	56.5709
172-MADISON DDA /OIS/OCC	12.4000	30.4000	3.4224	1.6090	16.4872	4.6523	38.5709	56.5709
230-ROYAL OAK /OIS/OCC	14.1500	27.2061	3.4224	1.6090	16.4872	4.6523	40.3209	53.3770
236-ROYAL OAK DDA/44 /OIS/OCC	14.1500	27.2061	3.4224	1.6090	16.4872	4.6523	40.3209	53.3770
<u>CITY OF NORTHVILLE</u>								
650-NORTHVILLE /WIS/SCC	10.7800	28.7800	3.4643	1.8043	17.1207	4.6523	37.8216	55.8216
<u>CITY OF NOVI</u>								
180-NOVI /OIS/OCC	17.6782	31.3453	3.4224	1.6090	10.5416	4.6523	37.9035	51.5706
183-NOVI TRANSFER /OIS/SCC	17.6782	31.3453	3.4224	1.8043	10.5416	4.6523	38.0988	51.7659
184-S LYON TO NOVI TRANS 97 /OIS/OCC	16.7082	30.3753	3.4224	1.6090	10.5416	4.6523	36.9335	50.6006
240-SOUTH LYON /OIS/OCC	14.0000	32.0000	3.4224	1.6090	10.5416	4.6523	34.2253	52.2253
270-WALLED LAKE /OIS/OCC	13.4728	28.9884	3.4224	1.6090	10.5416	4.6523	33.6981	49.2137
275-WALLED LAKE TRANSFER /OIS/OCC	14.2528	29.7684	3.4224	1.6090	10.5416	4.6523	34.4781	49.9937
650-NORTHVILLE /WIS/SCC	10.7800	28.7800	3.4643	1.8043	10.5416	4.6523	31.2425	49.2425
651-NORTHVILLE TRANSFER /WIS/OCC	11.6300	29.6300	3.4643	1.6090	10.5416	4.6523	31.8972	49.8972
<u>CITY OF OAK PARK</u>								
020-BERKLEY /OIS/OCC	10.3700	28.3700	3.4224	1.6090	24.2344	4.6523	44.2881	62.2881
110-FERNDAL /OIS/OCC	13.0000	31.0000	3.4224	1.6090	24.2344	4.6523	46.9181	64.9181
190-OAK PARK /OIS/OCC	14.1729	32.1512	3.4224	1.6090	24.2344	4.6523	48.0910	66.0693

* SEE PAGE 2

TOTAL CERTIFIED TAX RATES BY CITY

2002 APPORTIONMENT OF LOCAL TAX RATES IN OAKLAND COUNTY PER \$1000 OF TAXABLE VALUE

CITY/SCHOOL DISTRICT	HOMESTEAD SCHOOL	NON-HOMESTEAD SCHOOL	INTERMED SCHOOL DISTRICT	COMM-UNITY COLLEGE	CITY VILLAGE TOWNSHIP	* COMBINED	HOMESTEAD TOTAL	NON-HOMESTEAD TOTAL
<u>CITY OF ORCHARD LAKE VILLAGE</u>								
040-BLOOMFIELD HILLS /OIS/OCC	15.0758	24.6700	3.4224	1.6090	9.3620	4.6523	34.1215	43.7157
270-WALLED LAKE /OIS/OCC	13.4728	28.9884	3.4224	1.6090	9.3620	4.6523	32.5185	48.0341
290-WEST BLOOMFIELD /OIS/OCC	16.3924	29.9570	3.4224	1.6090	9.3620	4.6523	35.4381	49.0027
<u>CITY OF PLEASANT RIDGE</u>								
110-FERNDALE /OIS/OCC	13.0000	31.0000	3.4224	1.6090	18.1724	4.6523	40.8561	58.8561
117-FERNDALE 60 DDA /OIS/OCC	13.0000	31.0000	3.4224	1.6090	18.1724	4.6523	40.8561	58.8561
<u>CITY OF PONTIAC</u>								
210-PONTIAC /OIS/OCC	8.8000	26.8000	3.4224	1.6090	20.1163	4.6523	38.6000	56.6000
212-PONTIAC TIFA 3 /OIS/OCC	8.8000	26.8000	3.4224	1.6090	20.1163	4.6523	38.6000	56.6000
213-PONTIAC DDA 1 /OIS/OCC	8.8000	26.8000	3.4224	1.6090	20.1163	4.6523	38.6000	56.6000
214-PONTIAC DDA 2 /OIS/OCC	8.8000	26.8000	3.4224	1.6090	20.1163	4.6523	38.6000	56.6000
216-PONTIAC TIFA A /OIS/OCC	8.8000	26.8000	3.4224	1.6090	20.1163	4.6523	38.6000	56.6000
219-PONTIAC TIFA 4 /OIS/OCC	8.8000	26.8000	3.4224	1.6090	20.1163	4.6523	38.6000	56.6000
<u>CITY OF ROCHESTER</u>								
220-ROCHESTER /OIS/OCC	11.2250	29.2250	3.4224	1.6090	14.7471	4.6523	35.6558	53.6558
227-ROCHESTER DDA-3 /OIS/OCC	11.2250	29.2250	3.4224	1.6090	14.7471	4.6523	35.6558	53.6558
228-ROCHESTER DDA-2 /OIS/OCC	11.2250	29.2250	3.4224	1.6090	14.7471	4.6523	35.6558	53.6558
229-ROCHESTER DDA-1 /OIS/OCC	11.2250	29.2250	3.4224	1.6090	14.7471	4.6523	35.6558	53.6558

* SEE PAGE 2

TOTAL CERTIFIED TAX RATES BY CITY

2002 APPORTIONMENT OF LOCAL TAX RATES IN OAKLAND COUNTY PER \$1000 OF TAXABLE VALUE

CITY/SCHOOL DISTRICT	HOMESTEAD SCHOOL	NON-HOMESTEAD SCHOOL	INTERMED SCHOOL DISTRICT	COMM-UNITY COLLEGE	CITY VILLAGE TOWNSHIP	* COMBINED	HOMESTEAD TOTAL	NON-HOMESTEAD TOTAL
<u>CITY OF ROCHESTER HILLS</u>								
010-AVONDALE /OIS/OCC	14.6793	31.0000	3.4224	1.6090	9.3681	4.6523	33.7311	50.0518
018-AVON-INELIG-RH-LDFA /OIS/OCC	14.6793	31.0000	3.4224	1.6090	9.3681	4.6523	33.7311	50.0518
019-AVON-ELIG-RH-LDFA /OIS/OCC	14.6793	31.0000	3.4224	1.6090	9.3681	4.6523	33.7311	50.0518
220-ROCHESTER /OIS/OCC	11.2250	29.2250	3.4224	1.6090	9.3681	4.6523	30.2768	48.2768
222-ROCH-ELIGIBLE-LDFA /OIS/OCC	11.2250	29.2250	3.4224	1.6090	9.3681	4.6523	30.2768	48.2768
223-ROCH-INELIGIBLE-LDFA /OIS/OCC	11.2250	29.2250	3.4224	1.6090	9.3681	4.6523	30.2768	48.2768
<u>CITY OF ROYAL OAK</u>								
020-BERKLEY /OIS/OCC	10.3700	28.3700	3.4224	1.6090	11.6001	4.6523	31.6538	49.6538
080-CLAWSON /OIS/OCC	15.5773	32.6231	3.4224	1.6090	11.6001	4.6523	36.8611	53.9069
230-ROYAL OAK /OIS/OCC	14.1500	27.2061	3.4224	1.6090	11.6001	4.6523	35.4338	48.4899
231-ROYAL OAK DDA /OIS/OCC	14.1500	27.2061	3.4224	1.6090	13.3157	4.6523	37.1494	50.2055
232-ROYAL OAK BART LAF /OIS/OCC	14.1500	27.2061	3.4224	1.6090	13.3157	4.6523	37.1494	50.2055
234-ROYAL OAK I-696 DEV /OIS/OCC	14.1500	27.2061	3.4224	1.6090	13.3157	4.6523	37.1494	50.2055

* SEE PAGE 2

TOTAL CERTIFIED TAX RATES BY CITY

2002 APPORTIONMENT OF LOCAL TAX RATES IN OAKLAND COUNTY PER \$1000 OF TAXABLE VALUE

CITY/SCHOOL DISTRICT	HOMESTEAD SCHOOL	NON-HOMESTEAD SCHOOL	INTERMED SCHOOL DISTRICT	COMM-UNITY COLLEGE	CITY VILLAGE TOWNSHIP	* COMBINED	HOMESTEAD TOTAL	NON-HOMESTEAD TOTAL
<u>CITY OF SOUTHFIELD</u>								
030-BIRMINGHAM /OIS/OCC	17.7506	25.4500	3.4224	1.6090	16.7529	4.6523	44.1872	51.8866
190-OAK PARK /OIS/OCC	14.1729	32.1512	3.4224	1.6090	16.7529	4.6523	40.6095	58.5878
192-OAK PARK TIFA/DDA /OIS/OCC	14.1729	32.1512	3.4224	1.6090	18.7087	4.6523	42.5653	60.5436
199-OAK PARK DDA /OIS/OCC	14.1729	32.1512	3.4224	1.6090	18.7087	4.6523	42.5653	60.5436
250-SOUTHFIELD /OIS/OCC	28.8945	28.8945	3.4224	1.6090	16.7529	4.6523	55.3311	55.3311
251-SOUTHFIELD LDFA A /OIS/OCC	28.8945	28.8945	3.4224	1.6090	16.7529	4.6523	55.3311	55.3311
252-SOUTHFIELD TIFA-2 /OIS/OCC	28.8945	28.8945	3.4224	1.6090	16.7529	4.6523	55.3311	55.3311
253-SOUTHFIELD LDFA-1 /OIS/OCC	28.8945	28.8945	3.4224	1.6090	16.7529	4.6523	55.3311	55.3311
254-SOUTHFIELD LDFA-2 /OIS/OCC	28.8945	28.8945	3.4224	1.6090	16.7529	4.6523	55.3311	55.3311
255-SOUTHFIELD DDA /OIS/OCC	28.8945	28.8945	3.4224	1.6090	18.7087	4.6523	57.2869	57.2869
256-SOUTHFIELD TIFA/DDA /OIS/OCC	28.8945	28.8945	3.4224	1.6090	18.7087	4.6523	57.2869	57.2869
257-SOUTHFIELD LDFA 3 /OIS/OCC	28.8945	28.8945	3.4224	1.6090	16.7529	4.6523	55.3311	55.3311
<u>CITY OF SOUTH LYON</u>								
240-SOUTH LYON /OIS/OCC	14.0000	32.0000	3.4224	1.6090	14.7766	4.6523	38.4603	56.4603
244-SOUTH LYON DDA CVT 80 /OIS/OCC	14.0000	32.0000	3.4224	1.6090	14.7766	4.6523	38.4603	56.4603
<u>CITY OF SYLVAN LAKE</u>								
210-PONTIAC /OIS/OCC	8.8000	26.8000	3.4224	1.6090	12.1480	4.6523	30.6317	48.6317
211-PONTIAC PP-84 /OIS/OCC	8.8000	26.8000	3.4224	1.6090	12.1480	4.6523	30.6317	48.6317
290-WEST BLOOMFIELD /OIS/OCC	16.3924	29.9570	3.4224	1.6090	12.1480	4.6523	38.2241	51.7887
292-WEST BLOOMFIELD 84 PP /OIS/OCC	16.3924	29.9570	3.4224	1.6090	12.1480	4.6523	38.2241	51.7887

* SEE PAGE 2

TOTAL CERTIFIED TAX RATES BY CITY

2002 APPORTIONMENT OF LOCAL TAX RATES IN OAKLAND COUNTY PER \$1000 OF TAXABLE VALUE

CITY/SCHOOL DISTRICT	HOMESTEAD SCHOOL	NON-HOMESTEAD SCHOOL	INTERMED SCHOOL DISTRICT	COMM-UNITY COLLEGE	CITY VILLAGE TOWNSHIP	* COMBINED	HOMESTEAD TOTAL	NON-HOMESTEAD TOTAL
<u>CITY OF TROY</u>								
010-AVONDALE /OIS/OCC	14.6793	31.0000	3.4224	1.6090	10.0500	4.6523	34.4130	50.7337
030-BIRMINGHAM /OIS/OCC	17.7506	25.4500	3.4224	1.6090	10.0500	4.6523	37.4843	45.1837
035-TROY BROWNFIELD BIRM SCHOOL /OI	17.7506	25.4500	3.4224	1.6090	10.0500	4.6523	37.4843	45.1837
040-BLOOMFIELD HILLS /OIS/OCC	15.0758	24.6700	3.4224	1.6090	10.0500	4.6523	34.8095	44.4037
160-LAMPHERE /OIS/OCC	24.3993	27.8993	3.4224	1.6090	10.0500	4.6523	44.1330	47.6330
230-ROYAL OAK /OIS/OCC	14.1500	27.2061	3.4224	1.6090	10.0500	4.6523	33.8837	46.9398
260-TROY /OIS/OCC	15.7369	27.1400	3.4224	1.6090	10.0500	4.6523	35.4706	46.8737
262-TROY TRANSFER /OIS/OCC	15.8222	27.2253	3.4224	1.6090	10.0500	4.6523	35.5559	46.9590
265-TROY DDA /OIS/OCC	15.7369	27.1400	3.4224	1.6090	10.0500	4.6523	35.4706	46.8737
750-WARREN /MIS/OCC	16.9626	27.4964	2.9863	1.6090	10.0500	4.6523	36.2602	46.7940
<u>CITY OF WALLED LAKE</u>								
270-WALLED LAKE /OIS/OCC	13.4728	28.9884	3.4224	1.6090	17.7281	4.6523	40.8846	56.4002
278-WALLED LAKE TIFA /OIS/OCC	13.4728	28.9884	3.4224	1.6090	17.7281	4.6523	40.8846	56.4002
279-WALLED LAKE TIFA-B /OIS/OCC	13.4728	28.9884	3.4224	1.6090	17.7281	4.6523	40.8846	56.4002
<u>CITY OF WIXOM</u>								
180-NOVI /OIS/OCC	17.6782	31.3453	3.4224	1.6090	10.6883	4.6523	38.0502	51.7173
240-SOUTH LYON /OIS/OCC	14.0000	32.0000	3.4224	1.6090	10.6883	4.6523	34.3720	52.3720
270-WALLED LAKE /OIS/OCC	13.4728	28.9884	3.4224	1.6090	10.6883	4.6523	33.8448	49.3604
277-WALLED LAKE 96 LDFA /OIS/OCC	13.4728	28.9884	3.4224	1.6090	10.6883	4.6523	33.8448	49.3604
279-WALLED LAKE TIFA-B /OIS/OCC	13.4728	28.9884	3.4224	1.6090	10.6883	4.6523	33.8448	49.3604

* SEE PAGE 2

TOWNSHIP AND VILLAGE CERTIFIED TAX RATES
2002 APPORTIONMENT OF LOCAL TAX RATES IN OAKLAND COUNTY PER \$1000 OF TAXABLE VALUE

TOWNSHIP AND VILLAGE	TOWNSHIP			VILLAGE	TOTAL
	ALLOCATED	VOTED	DEBT OR AUTHORITY		
A TOWNSHIP OF ADDISON	1.1688	5.5107	0.7303		7.4098
AL VILLAGE OF LEONARD	1.1688	5.5107	0.7303	6.0000	13.4098
C CHARTER TOWNSHIP OF BLOOMFIELD	0.0000	0.0000	8.0334		8.0334
D CHARTER TOWNSHIP OF BRANDON	0.0000	0.0000	5.9591		5.9591
DO VILLAGE OF ORTONVILLE	0.0000	0.0000	5.9591	8.0000	13.9591
E CHARTER TOWNSHIP OF COMMERCE	0.0000	0.0000	3.8349		3.8349
EW VILLAGE OF WOLVERINE LAKE	0.0000	0.0000	3.8349	9.5700	13.4049
G TOWNSHIP OF GROVELAND	1.0000	3.5000	0.0000		4.5000
H CHARTER TOWNSHIP OF HIGHLAND	0.0000	0.0000	6.4241		6.4241
I TOWNSHIP OF HOLLY	1.0000	1.5000	0.0000		2.5000
IH VILLAGE OF HOLLY	1.0000	1.5000	0.0000	16.2183	18.7183
J CHARTER TOWNSHIP OF INDEPENDENCE	0.0000	0.0000	6.8564		6.8564
K CHARTER TOWNSHIP OF LYON	0.0000	0.0000	4.7761		4.7761
L CHARTER TOWNSHIP OF MILFORD	0.0000	0.0000	7.1196		7.1196
LM VILLAGE OF MILFORD	0.0000	0.0000	7.1196	9.1434	16.2630
M TOWNSHIP OF NOVI	0.6890	2.8844	0.0000		3.5734
N CHARTER TOWNSHIP OF OAKLAND	0.0000	0.0000	6.3805		6.3805
O CHARTER TOWNSHIP OF ORION	0.0000	0.0000	5.5934		5.5934
OL VILLAGE OF LAKE ORION	0.0000	0.0000	5.5934	12.8758	18.4692

TOWNSHIP AND VILLAGE CERTIFIED TAX RATES
2002 APPORTIONMENT OF LOCAL TAX RATES IN OAKLAND COUNTY PER \$1000 OF TAXABLE VALUE

TOWNSHIP AND VILLAGE	TOWNSHIP			VILLAGE	TOTAL
	ALLOCATED	VOTED	DEBT OR AUTHORITY		
P CHARTER TOWNSHIP OF OXFORD	0.0000	0.0000	9.3296		9.3296
PO VILLAGE OF OXFORD	0.0000	0.0000	4.9385	12.6200	17.5585
R TOWNSHIP OF ROSE	1.0875	1.4557	0.0000		2.5432
RH VILLAGE OF HOLLY	1.0875	1.4557	0.0000	16.2183	18.7615
S CHARTER TOWNSHIP OF ROYAL OAK	0.0000	0.0000	10.7166		10.7166
T TOWNSHIP OF SOUTHFIELD	0.5500	0.0000	0.0000		0.5500
TB VILLAGE OF BINGHAM FARMS	0.5500	0.6000	0.0000	6.8000	7.9500
TF VILLAGE OF FRANKLIN	0.5500	0.6000	0.0000	9.5502	10.7002
TH VILLAGE OF BEVERLY HILLS	0.5500	0.6000	0.0000	12.9252	14.0752
U CHARTER TOWNSHIP OF SPRINGFIELD	0.0000	0.0000	4.8220		4.8220
W CHARTER TOWNSHIP OF WATERFORD	0.0000	0.0000	10.2719		10.2719
X CHARTER TOWNSHIP OF WEST BLOOMFIELD	0.0000	0.0000	9.5140		9.5140
Y CHARTER TOWNSHIP OF WHITE LAKE	0.0000	0.0000	6.2628		6.2628

CITY CERTIFIED TAX RATES

2002 APPORTIONMENT OF LOCAL TAX RATES IN OAKLAND COUNTY PER \$1000 OF TAXABLE VALUE

CITY	CERTIFIED RATE
02 CITY OF AUBURN HILLS	11.5877
04 CITY OF BERKLEY	14.3260
08 CITY OF BIRMINGHAM	15.4690
12 CITY OF BLOOMFIELD HILLS	7.5500
14 CITY OF CLARKSTON VILLAGE	18.5350
16 CITY OF CLAWSON	14.1917
20 CITY OF FARMINGTON	16.3139
22 CITY OF FARMINGTON HILLS	11.4108
24 CITY OF FERNDALE	26.1031
28 CITY OF HAZEL PARK	22.5915
32 CITY OF HUNTINGTON WOODS	20.8439
36 CITY OF KEEGO HARBOR	14.5882
38 CITY OF LAKE ANGELUS	9.9571
40 CITY OF LATHRUP VILLAGE	17.7215
44 CITY OF MADISON HEIGHTS	16.4872
48 CITY OF NORTHVILLE	17.1207
50 CITY OF NOVI	10.5416
52 CITY OF OAK PARK	24.2344

CITY CERTIFIED TAX RATES

2002 APPORTIONMENT OF LOCAL TAX RATES IN OAKLAND COUNTY PER \$1000 OF TAXABLE VALUE

CITY	CERTIFIED RATE
56 CITY OF ORCHARD LAKE VILLAGE	9.3620
60 CITY OF PLEASANT RIDGE	18.1724
64 CITY OF PONTIAC	20.1163
68 CITY OF ROCHESTER	14.7471
70 CITY OF ROCHESTER HILLS	9.3681
72 CITY OF ROYAL OAK	11.6001
76 CITY OF SOUTHFIELD	16.7529
80 CITY OF SOUTH LYON	14.7766
84 CITY OF SYLVAN LAKE	12.1480
88 CITY OF TROY	10.0500
92 CITY OF WALLED LAKE	17.7281
96 CITY OF WIXOM	10.6883

SCHOOL DISTRICT CERTIFIED TAX RATE

2002 APPORTIONMENT OF LOCAL TAX RATES IN OAKLAND COUNTY PER \$1000 OF TAXABLE VALUE

SCHOOL DISTRICT	(ALL PROPERTY) STATE EDUCATION	(NON-HOMESTEAD) SCHOOL OPERATING	(HOMESTEAD) <18 MILLS SUPPLE- MENTAL	(ALL PROPERTY) >18 MILLS SUPPLE- MENTAL	(ALL PROPERTY) LOCAL ENHANCE- MENT	(ALL PROPERTY) DEBT	HOMESTEAD TOTAL	NON- HOMESTEAD TOTAL
010-AVONDALE	6.0000	18.0000	1.6793	0.0000	0.0000	7.0000	14.6793	31.0000
015-AVONDALE TIFA A	6.0000	18.0000	1.6793	0.0000	0.0000	7.0000	14.6793	31.0000
018-AVON-INELIG-RH-LDFA	6.0000	18.0000	1.6793	0.0000	0.0000	7.0000	14.6793	31.0000
019-AVON-ELIG-RH-LDFA	6.0000	18.0000	1.6793	0.0000	0.0000	7.0000	14.6793	31.0000
01B-AVONDALE BROWNFIELD	6.0000	18.0000	1.6793	0.0000	0.0000	7.0000	14.6793	31.0000
020-BERKLEY	6.0000	18.0000	0.0000	0.0000	0.0000	4.3700	10.3700	28.3700
022-BERKLEY R.O.T. PP	6.0000	18.0000	0.0000	0.0000	0.0000	4.3700	10.3700	28.3700
025-BERKLEY DDA	6.0000	18.0000	0.0000	0.0000	0.0000	4.3700	10.3700	28.3700
030-BIRMINGHAM	6.0000	18.0000	10.3006	0.0000	0.0000	1.4500	17.7506	25.4500
034-BLM TWP VILLAGE SUB	6.0000	18.0000	10.3006	0.0000	0.0000	1.4500	17.7506	25.4500
035-TROY BROWNFIELD BIRM S	6.0000	18.0000	10.3006	0.0000	0.0000	1.4500	17.7506	25.4500
040-BLOOMFIELD HILLS	6.0000	18.0000	8.4058	0.0000	0.0000	0.6700	15.0758	24.6700
050-BRANDON	6.0000	15.9718	0.0000	0.0000	0.0000	8.2400	14.2400	30.2118
054-BRANDON TIFA	6.0000	15.9718	0.0000	0.0000	0.0000	8.2400	14.2400	30.2118
055-BRANDON TIFA PP	6.0000	15.9718	0.0000	0.0000	0.0000	8.2400	14.2400	30.2118
058-GDR TO BRAN TRAN 5/26/98	6.0000	15.9718	0.0000	0.0000	0.0000	3.5560	9.5560	25.5278
059-BRANDON PP	6.0000	15.9718	0.0000	0.0000	0.0000	8.2400	14.2400	30.2118
060-CLARENCEVILLE	6.0000	17.9604	0.8248	0.0000	0.0000	3.9303	10.7551	27.8907
070-CLARKSTON	6.0000	18.0000	0.0000	0.0000	0.0000	7.0000	13.0000	31.0000

SCHOOL DISTRICT CERTIFIED TAX RATE

2002 APPORTIONMENT OF LOCAL TAX RATES IN OAKLAND COUNTY PER \$1000 OF TAXABLE VALUE

SCHOOL DISTRICT	(ALL PROPERTY) STATE EDUCATION	(NON-HOMESTEAD) SCHOOL OPERATING	(HOMESTEAD) <18 MILLS SUPPLE- MENTAL	(ALL PROPERTY) >18 MILLS SUPPLE- MENTAL	(ALL PROPERTY) LOCAL ENHANCE- MENT	(ALL PROPERTY) DEBT	HOMESTEAD TOTAL	NON- HOMESTEAD TOTAL
080-CLAWSON	6.0000	17.0458	0.0000	0.0000	0.0000	9.5773	15.5773	32.6231
089-CLAWSON DDA	6.0000	17.0458	0.0000	0.0000	0.0000	9.5773	15.5773	32.6231
100-FARMINGTON	6.0000	17.9388	10.4459	0.0000	0.0000	2.0000	18.4459	25.9388
101-FARMINGTON DDA	6.0000	17.9388	10.4459	0.0000	0.0000	2.0000	18.4459	25.9388
110-FERNDALE	6.0000	18.0000	0.0000	0.0000	0.0000	7.0000	13.0000	31.0000
111-FERNDALE R.O.T. PP	6.0000	18.0000	0.0000	0.0000	0.0000	7.0000	13.0000	31.0000
112-FERNDALE TIFA	6.0000	18.0000	0.0000	0.0000	0.0000	7.0000	13.0000	31.0000
113-FERNDALE-24-DDA	6.0000	18.0000	0.0000	0.0000	0.0000	7.0000	13.0000	31.0000
117-FERNDALE 60 DDA	6.0000	18.0000	0.0000	0.0000	0.0000	7.0000	13.0000	31.0000
118-FERNDALE PP DDA	6.0000	18.0000	0.0000	0.0000	0.0000	7.0000	13.0000	31.0000
119-FERNDALE DDA	6.0000	18.0000	0.0000	0.0000	0.0000	7.0000	13.0000	31.0000
120-HAZEL PARK	6.0000	17.7721	0.0000	0.0000	0.0000	7.0000	13.0000	30.7721
125-HAZEL PARK DDA 3A	6.0000	17.7721	0.0000	0.0000	0.0000	7.0000	13.0000	30.7721
126-HAZEL PARK DDA-4	6.0000	17.7721	0.0000	0.0000	0.0000	7.0000	13.0000	30.7721
127-HAZEL PARK DDA 2	6.0000	17.7721	0.0000	0.0000	0.0000	7.0000	13.0000	30.7721
128-HAZEL PARK DDA 3	6.0000	17.7721	0.0000	0.0000	0.0000	7.0000	13.0000	30.7721
129-HAZEL PARK DDA	6.0000	17.7721	0.0000	0.0000	0.0000	7.0000	13.0000	30.7721
130-HOLLY	6.0000	18.0000	0.0000	0.0000	0.0000	7.0000	13.0000	31.0000
131-HOLLY TIFA	6.0000	18.0000	0.0000	0.0000	0.0000	7.0000	13.0000	31.0000

SCHOOL DISTRICT CERTIFIED TAX RATE

2002 APPORTIONMENT OF LOCAL TAX RATES IN OAKLAND COUNTY PER \$1000 OF TAXABLE VALUE

SCHOOL DISTRICT	(ALL PROPERTY) STATE EDUCATION	(NON-HOMESTEAD) SCHOOL OPERATING	(HOMESTEAD) <18 MILLS SUPPLE- MENTAL	(ALL PROPERTY) >18 MILLS SUPPLE- MENTAL	(ALL PROPERTY) LOCAL ENHANCE- MENT	(ALL PROPERTY) DEBT	HOMESTEAD TOTAL	NON- HOMESTEAD TOTAL
140-HURON VALLEY	6.0000	17.7918	0.0000	0.0000	0.0000	7.9781	13.9781	31.7699
141-MILFORD VILLAGE DDA	6.0000	17.7918	0.0000	0.0000	0.0000	7.9781	13.9781	31.7699
143-HURON VALLEY ACT 189	6.0000	17.7918	0.0000	0.0000	0.0000	7.9781	13.9781	31.7699
144-HURON VALLEY DDA CVT H	6.0000	17.7918	0.0000	0.0000	0.0000	7.9781	13.9781	31.7699
150-LAKE ORION	6.0000	18.0000	0.0000	0.0000	0.0000	7.4910	13.4910	31.4910
152-LAKE ORION TRANSFER	6.0000	18.0000	0.0000	0.0000	0.0000	10.2910	16.2910	34.2910
160-LAMPHERE	6.0000	18.0000	14.5000	0.0000	0.0000	3.8993	24.3993	27.8993
170-MADISON	6.0000	18.0000	0.0000	0.0000	0.0000	6.4000	12.4000	30.4000
172-MADISON DDA	6.0000	18.0000	0.0000	0.0000	0.0000	6.4000	12.4000	30.4000
180-NOVI	6.0000	18.0000	4.3329	0.0000	0.0000	7.3453	17.6782	31.3453
183-NOVI TRANSFER	6.0000	18.0000	4.3329	0.0000	0.0000	7.3453	17.6782	31.3453
184-S LYON TO NOVI TRANS 97	6.0000	18.0000	4.3329	0.0000	0.0000	6.3753	16.7082	30.3753
190-OAK PARK	6.0000	17.9783	0.0000	0.0000	0.0000	8.1729	14.1729	32.1512
191-OAK PARK R.O.T. PP	6.0000	17.9783	0.0000	0.0000	0.0000	8.1729	14.1729	32.1512
192-OAK PARK TIFA/DDA	6.0000	17.9783	0.0000	0.0000	0.0000	8.1729	14.1729	32.1512
198-OAK PARK DDA PP	6.0000	17.9783	0.0000	0.0000	0.0000	8.1729	14.1729	32.1512
199-OAK PARK DDA	6.0000	17.9783	0.0000	0.0000	0.0000	8.1729	14.1729	32.1512
200-OXFORD	6.0000	16.3326	0.0000	0.0000	0.0000	7.0000	13.0000	29.3326
202-OXFORD TRANSFER	6.0000	16.3326	0.0000	0.0000	0.0000	7.0000	13.0000	29.3326
205-OXFORD VILLAGE DDA	6.0000	16.3326	0.0000	0.0000	0.0000	7.0000	13.0000	29.3326
209-OXFORD PP	6.0000	16.3326	0.0000	0.0000	0.0000	7.0000	13.0000	29.3326

SCHOOL DISTRICT CERTIFIED TAX RATE

2002 APPORTIONMENT OF LOCAL TAX RATES IN OAKLAND COUNTY PER \$1000 OF TAXABLE VALUE

SCHOOL DISTRICT	(ALL PROPERTY) STATE EDUCATION	(NON-HOMESTEAD) SCHOOL OPERATING	(HOMESTEAD) <18 MILLS SUPPLE- MENTAL	(ALL PROPERTY) >18 MILLS SUPPLE- MENTAL	(ALL PROPERTY) LOCAL ENHANCE- MENT	(ALL PROPERTY) DEBT	HOMESTEAD TOTAL	NON- HOMESTEAD TOTAL
210-PONTIAC	6.0000	18.0000	0.0000	0.0000	0.0000	2.8000	8.8000	26.8000
211-PONTIAC PP-84	6.0000	18.0000	0.0000	0.0000	0.0000	2.8000	8.8000	26.8000
212-PONTIAC TIFA 3	6.0000	18.0000	0.0000	0.0000	0.0000	2.8000	8.8000	26.8000
213-PONTIAC DDA 1	6.0000	18.0000	0.0000	0.0000	0.0000	2.8000	8.8000	26.8000
214-PONTIAC DDA 2	6.0000	18.0000	0.0000	0.0000	0.0000	2.8000	8.8000	26.8000
215-PONTIAC TIFA B	6.0000	18.0000	0.0000	0.0000	0.0000	2.8000	8.8000	26.8000
216-PONTIAC TIFA A	6.0000	18.0000	0.0000	0.0000	0.0000	2.8000	8.8000	26.8000
217-PONTIAC TIFA D	6.0000	18.0000	0.0000	0.0000	0.0000	2.8000	8.8000	26.8000
218-PONTIAC LDFA	6.0000	18.0000	0.0000	0.0000	0.0000	2.8000	8.8000	26.8000
219-PONTIAC TIFA 4	6.0000	18.0000	0.0000	0.0000	0.0000	2.8000	8.8000	26.8000
21B-PONTIAC BROWNFIELD	6.0000	18.0000	0.0000	0.0000	0.0000	2.8000	8.8000	26.8000
220-ROCHESTER	6.0000	18.0000	0.0000	0.0000	0.0000	5.2250	11.2250	29.2250
222-ROCH-ELIGIBLE-LDFA	6.0000	18.0000	0.0000	0.0000	0.0000	5.2250	11.2250	29.2250
223-ROCH-INELIGIBLE-LDFA	6.0000	18.0000	0.0000	0.0000	0.0000	5.2250	11.2250	29.2250
227-ROCHESTER DDA-3	6.0000	18.0000	0.0000	0.0000	0.0000	5.2250	11.2250	29.2250
228-ROCHESTER DDA-2	6.0000	18.0000	0.0000	0.0000	0.0000	5.2250	11.2250	29.2250
229-ROCHESTER DDA-1	6.0000	18.0000	0.0000	0.0000	0.0000	5.2250	11.2250	29.2250
230-ROYAL OAK	6.0000	17.8061	4.7500	0.0000	0.0000	3.4000	14.1500	27.2061
231-ROYAL OAK DDA	6.0000	17.8061	4.7500	0.0000	0.0000	3.4000	14.1500	27.2061
232-ROYAL OAK BART LAF	6.0000	17.8061	4.7500	0.0000	0.0000	3.4000	14.1500	27.2061
234-ROYAL OAK I-696 DEV	6.0000	17.8061	4.7500	0.0000	0.0000	3.4000	14.1500	27.2061
236-ROYAL OAK DDA/44	6.0000	17.8061	4.7500	0.0000	0.0000	3.4000	14.1500	27.2061

SCHOOL DISTRICT CERTIFIED TAX RATE

2002 APPORTIONMENT OF LOCAL TAX RATES IN OAKLAND COUNTY PER \$1000 OF TAXABLE VALUE

SCHOOL DISTRICT	(ALL PROPERTY) STATE EDUCATION	(NON-HOMESTEAD) SCHOOL OPERATING	(HOMESTEAD) <18 MILLS SUPPLE- MENTAL	(ALL PROPERTY) >18 MILLS SUPPLE- MENTAL	(ALL PROPERTY) LOCAL ENHANCE- MENT	(ALL PROPERTY) DEBT	HOMESTEAD TOTAL	NON- HOMESTEAD TOTAL
240-SOUTH LYON	6.0000	18.0000	0.0000	0.0000	0.0000	8.0000	14.0000	32.0000
242-SOUTH LYON DDA1	6.0000	18.0000	0.0000	0.0000	0.0000	8.0000	14.0000	32.0000
243-SOUTH LYON DDA2	6.0000	18.0000	0.0000	0.0000	0.0000	8.0000	14.0000	32.0000
244-SOUTH LYON DDA CVT 80	6.0000	18.0000	0.0000	0.0000	0.0000	8.0000	14.0000	32.0000
250-SOUTHFIELD	6.0000	18.0000	18.0000	2.6345	0.0000	2.2600	28.8945	28.8945
251-SOUTHFIELD LDFA A	6.0000	18.0000	18.0000	2.6345	0.0000	2.2600	28.8945	28.8945
252-SOUTHFIELD TIFA-2	6.0000	18.0000	18.0000	2.6345	0.0000	2.2600	28.8945	28.8945
253-SOUTHFIELD LDFA-1	6.0000	18.0000	18.0000	2.6345	0.0000	2.2600	28.8945	28.8945
254-SOUTHFIELD LDFA-2	6.0000	18.0000	18.0000	2.6345	0.0000	2.2600	28.8945	28.8945
255-SOUTHFIELD DDA	6.0000	18.0000	18.0000	2.6345	0.0000	2.2600	28.8945	28.8945
256-SOUTHFIELD TIFA/DDA	6.0000	18.0000	18.0000	2.6345	0.0000	2.2600	28.8945	28.8945
257-SOUTHFIELD LDFA 3	6.0000	18.0000	18.0000	2.6345	0.0000	2.2600	28.8945	28.8945
258-STHFLD-LATHRUP DDA	6.0000	18.0000	18.0000	2.6345	0.0000	2.2600	28.8945	28.8945
259-SOUTHFLD/40/DDA	6.0000	18.0000	18.0000	2.6345	0.0000	2.2600	28.8945	28.8945
260-TROY	6.0000	18.0000	6.5969	0.0000	0.0000	3.1400	15.7369	27.1400
262-TROY TRANSFER	6.0000	18.0000	6.5969	0.0000	0.0000	3.2253	15.8222	27.2253
265-TROY DDA	6.0000	18.0000	6.5969	0.0000	0.0000	3.1400	15.7369	27.1400
270-WALLED LAKE	6.0000	17.8884	2.3728	0.0000	0.0000	5.1000	13.4728	28.9884
275-WALLED LAKE TRANSFER	6.0000	17.8884	2.3728	0.0000	0.0000	5.8800	14.2528	29.7684
277-WALLED LAKE 96 LDFA	6.0000	17.8884	2.3728	0.0000	0.0000	5.1000	13.4728	28.9884
278-WALLED LAKE TIFA	6.0000	17.8884	2.3728	0.0000	0.0000	5.1000	13.4728	28.9884
279-WALLED LAKE TIFA-B	6.0000	17.8884	2.3728	0.0000	0.0000	5.1000	13.4728	28.9884

SCHOOL DISTRICT CERTIFIED TAX RATE

2002 APPORTIONMENT OF LOCAL TAX RATES IN OAKLAND COUNTY PER \$1000 OF TAXABLE VALUE

SCHOOL DISTRICT	(ALL PROPERTY) STATE EDUCATION	(NON-HOMESTEAD) SCHOOL OPERATING	(HOMESTEAD) <18 MILLS SUPPLE- MENTAL	(ALL PROPERTY) >18 MILLS SUPPLE- MENTAL	(ALL PROPERTY) LOCAL ENHANCE- MENT	(ALL PROPERTY) DEBT	HOMESTEAD TOTAL	NON- HOMESTEAD TOTAL
280-WATERFORD	6.0000	18.0000	0.0000	0.0000	0.0000	3.1700	9.1700	27.1700
290-WEST BLOOMFIELD	6.0000	17.6170	4.0524	0.0000	0.0000	6.3400	16.3924	29.9570
292-WEST BLOOMFIELD 84 PP	6.0000	17.6170	4.0524	0.0000	0.0000	6.3400	16.3924	29.9570
299-KEEGO HARBOR TIFA	6.0000	17.6170	4.0524	0.0000	0.0000	6.3400	16.3924	29.9570
400-ALMONT	6.0000	17.8613	0.0000	0.0000	0.0000	8.4500	14.4500	32.3113
450-FENTON	6.0000	17.7912	0.0000	0.0000	0.0000	7.6127	13.6127	31.4039
500-GOODRICH	6.0000	17.9973	0.0000	0.0000	0.0000	7.7500	13.7500	31.7473
550-GRAND BLANC	6.0000	17.7480	0.0000	0.0000	0.0000	2.7872	8.7872	26.5352
650-NORTHVILLE	6.0000	18.0000	0.0000	0.0000	0.0000	4.7800	10.7800	28.7800
651-NORTHVILLE TRANSFER	6.0000	18.0000	0.0000	0.0000	0.0000	5.6300	11.6300	29.6300
700-ROMEIO	6.0000	18.0000	0.0000	0.0000	0.0000	6.6427	12.6427	30.6427
702-ROMEIO TRANSFER	6.0000	18.0000	0.0000	0.0000	0.0000	6.4839	12.4839	30.4839
750-WARREN	6.0000	18.0000	7.4662	0.0000	0.0000	3.4964	16.9626	27.4964

INTERMEDIATE SCHOOL DISTRICT/COMMUNITY COLLEGE/OAKLAND COUNTY GENERAL OPERATING/
 OAKLAND COUNTY PARKS AND RECREATION/HURON CLINTON METROPOLITAN AUTHORITY
CERTIFIED TAX RATES

2002 APPORTIONMENT OF LOCAL TAX RATES IN OAKLAND COUNTY PER \$1000 OF TAXABLE VALUE

	ALLOCATED	VOTED	DEBT OR AUTHORITY	TOTAL
--	-----------	-------	----------------------	-------

INTERMEDIATE SCHOOLS

GENESSEE INTERMEDIATE SCHOOLS	0.1651	3.4022	0.0000	3.5673
LAPEER INTERMEDIATE SCHOOLS	0.1943	2.8524	0.0000	3.0467
MACOMB INTERMEDIATE SCHOOLS	0.2053	2.7810	0.0000	2.9863
OAKLAND INTERMEDIATE SCHOOLS	0.2035	3.2189	0.0000	3.4224
WAYNE INTERMEDIATE SCHOOLS	0.0965	3.3678	0.0000	3.4643

COMMUNITY COLLEGES

MOTT COMMUNITY COLLEGE	0.0000	2.0080	0.8200	2.8280
OAKLAND COMMUNITY COLLEGE	0.0000	1.6090	0.0000	1.6090
SCHOOLCRAFT COLLEGE	0.0000	1.8043	0.0000	1.8043

OAKLAND COUNTY GENERAL OPERATING

	4.1900	0.0000	0.0000	4.1900
--	--------	--------	--------	--------

OAKLAND COUNTY PARKS AND RECREATION

	0.0000	0.2453	0.0000	0.2453
--	--------	--------	--------	--------

HURON CLINTON METRO AUTHORITY

	0.0000	0.0000	0.2170	0.2170
--	--------	--------	--------	--------

* COMBINED-CONSISTS OF:

COUNTY OPERATING	4.1900
PARKS AND RECREATION	0.2453
HURON CLINTON AUTHORITY	0.2170

TOTAL	4.6523
-------	--------

OAKLAND COUNTY PUBLIC TRANSPORTATION AUTHORITY
 CERTIFIED TAX RATES

2002 APPORTIONMENT OF LOCAL TAX RATES IN OAKLAND COUNTY PER \$1000 OF TAXABLE VALUE

CITY, VILLAGE OR TOWNSHIP	ALLOCATED	VOTED	DEBT OR AUTHORITY	TOTAL
CHARTER TOWNSHIP OF BLOOMFIELD		0.6000		0.6000
CHARTER TOWNSHIP OF ROYAL OAK		0.6000		0.6000
CHARTER TOWNSHIP OF WEST BLOOMFIELD		0.6000		0.6000
CITY OF AUBURN HILLS		0.6000		0.6000
CITY OF BERKLEY		0.6000		0.6000
CITY OF BIRMINGHAM		0.6000		0.6000
CITY OF CLAWSON		0.6000		0.6000
CITY OF FARMINGTON		0.6000		0.6000
CITY OF FARMINGTON HILLS		0.6000		0.6000
CITY OF FERNDALE		0.6000		0.6000
CITY OF HAZEL PARK		0.6000		0.6000
CITY OF HUNTINGTON WOODS		0.6000		0.6000
CITY OF MADISON HEIGHTS		0.6000		0.6000
CITY OF OAK PARK		0.6000		0.6000
CITY OF PLEASANT RIDGE		0.6000		0.6000
CITY OF PONTIAC		0.6000		0.6000
CITY OF ROYAL OAK		0.6000		0.6000
CITY OF SOUTHFIELD		0.6000		0.6000
CITY OF TROY		0.6000		0.6000
VILLAGE OF BINGHAM FARMS		0.6000		0.6000
VILLAGE OF FRANKLIN		0.6000		0.6000
VILLAGE OF BEVERLY HILLS		0.6000		0.6000