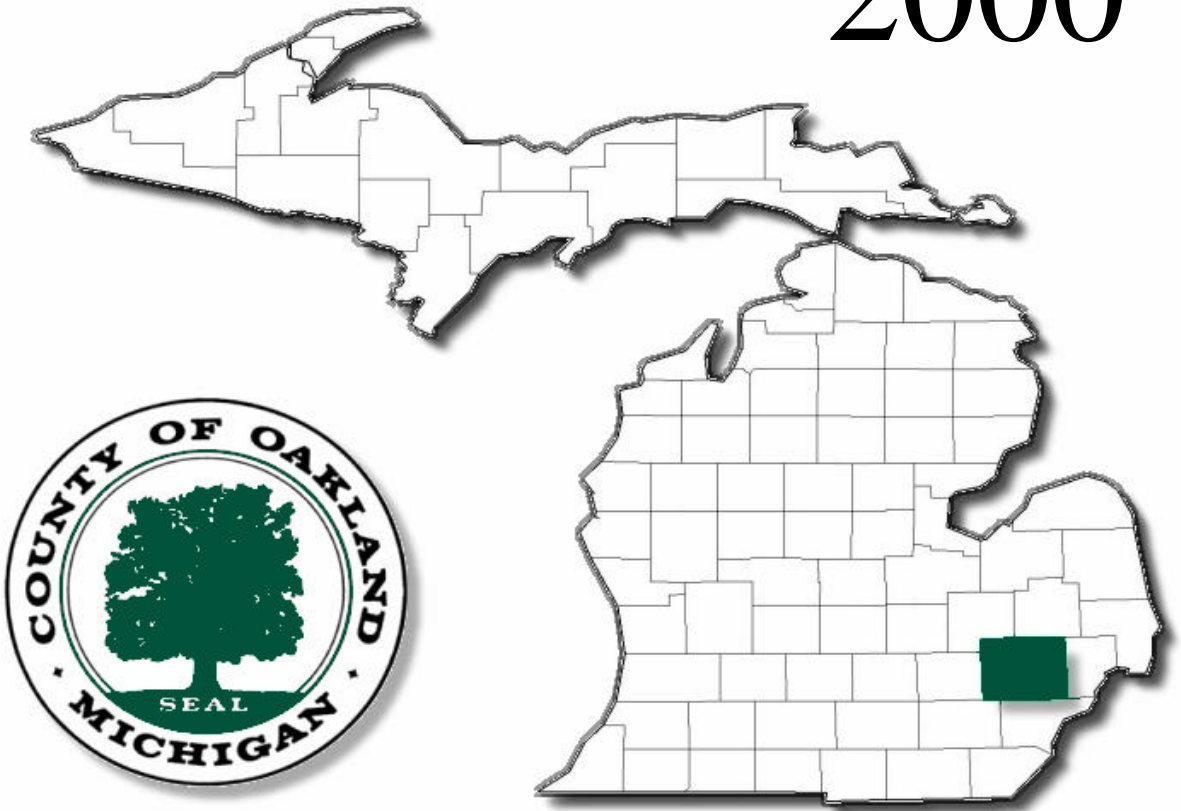


2000



# Apportionment of Local Tax Rates

December 14, 2000

# **L. BROOKS PATTERSON OAKLAND COUNTY EXECUTIVE**

## **2000 APPORTIONMENT REPORT OAKLAND COUNTY, MICHIGAN**

*Prepared By*  
**DEPARTMENT OF MANAGEMENT AND BUDGET  
JEFFREY C. PARDEE, Director**

**EQUALIZATION DIVISION  
ROBERT O. VANDERMARK, Manager**

*Under the direction of the Finance Committee of the Board of Commissioners*

**SUE ANN DOUGLAS  
Chairperson**

**DONALD W. JENSEN  
Majority Vice Chairperson**

**MICHELLE FRIEDMAN APPEL  
Minority Vice Chairperson**

**FRAN AMOS**

**ERIC COLEMAN**

**FRANK H. MILLARD, JR.**

**BRENDA A. CAUSEY-MITCHELL**

**LAWRENCE A. OBRECHT**

**CHARLES E. PALMER**

**SHELLEY G. TAUB**

TABLE OF CONTENTS

2000 APPORTIONMENT OF LOCAL TAX RATES

LETTER OF TRANSMITTAL..... i

OAKLAND COUNTY BOARD OF COMMISSIONERS ..... ii

RESOLUTION RECOMMENDING THE ADOPTION OF THE  
APPORTIONMENT REPORT OF LOCAL TAX RATES..... iii

THE TOTAL ESTIMEATED TAX LEVEY FOR 2000  
AD VALOREM PROPERTY TAXES ..... 1

TOTAL CERTIFIED TAX RATES BY TOWNSHIPS..... 2-9

TOTAL CERTIFIED TAX RATES BY CITIES..... 10-17

TOWNSHIP AND VILLAGE CERTIFIED TAX RATES ..... 18-19

CITY CERTIFIED TAX RATES ..... 20-21

SCHOOL DISTRICT CERTIFIED TAX RATES ..... 22-27

INTERMEDIATE SCHOOL DISTRICT CERTIFIED TAX RATES ..... 28

COMMUNITY COLLEGE CERTIFIED TAX RATES ..... 28

OAKLAND COUNTY GENERAL OPERATING CERTIFIED TAX RATES..... 28

OAKLAND COUNTY PARKS & RECREATION CERTIFIED TAX RATES ..... 28

HURON CLINTON AUTHORITY CERTIFIED TAX RATES..... 28

OAKLAND COUNTY PUBLIC TRANSPORTATION AUTHORITY  
CERTIFIED TAX RATES ..... 29

October 12, 2000

TO THE OAKLAND COUNTY BOARD OF COMMISSIONERS – FINANCE  
COMMITTEE:

The attached Apportionment of Local Tax Rates was prepared by the Equalization Division of the Department of Management and Budget, under the supervision of the Oakland County Board of Commissioners Finance Committee.

The certificates, statements, papers and records submitted by the various townships, cities and villages were examined, and the enclosed rates represent a compilation of those documents. The certified rates, as adjusted by Headlee M.C.L. (Sections 211.34D, 211.34E), Truth in Assessing M.C.L. (Section 211.34), are set for all townships, cities, and villages in Oakland County.

Of special interest on page 1 is the Summary of the Estimated Tax Levy by the various taxing authorities. These recaps depict the average tax rate and estimated total levy.

The attached resolution, if passed by the Oakland County Board of Commissioners, will authorize the Equalization Director to sign the several tax certificates on which the attached tabulation was based. The action thereby authorizes and directs the various assessing officers to spread the rates against the 2000 taxable valuation.

If you have any questions or need further information, please contact my office.

Respectfully submitted,

Robert O. Vandermark, Manager  
Equalization Division  
Department of Management and Budget

OAKLAND COUNTY BOARD OF COMMISSIONERS

Fran Amos*	John P. Garfield	David L. Moffitt
Michelle Friedman Appel*	Vincent Gregory	Lawrence A. Obrecht*
David Buckley	Donald W. Jensen*	Charles E. Palmer*
Ron Colasanti	Thomas A. Law	William R. Patterson
Eric Coleman	John P. McCulloh	Kay Schmid
Nancy Dingledey	Ruel E. McPherson	Terry L. Sever
Sue Ann Douglas*	Tim W. Melton	George W. Suarez
David N. Galloway	Frank H. Millard, Jr.*	Shelley G. Taub*
	Brenda A. Causey-Mithcell*	

\*Finance Committee Members

December 9, 2000

BY: FINANCE COMMITTEE – SUE ANN DOUGLAS, Chairperson

RE: DEPARTMENT OF MANAGEMENT & BUDGET – APPORTIONMENT OF LOCAL TAX RATES

TO THE OAKLAND COUNTY BOARD OF COMMISSIONERS

Chairperson, Ladies and Gentlemen:

WHEREAS, your Finance Committee on Local Taxes has examined certificates, statements, papers, and records submitted to it from the various townships, cities and villages having taxes to be spread upon the Tax Rolls, and has checked these documents with the pertinent laws, specifically Section 37 General Property Tax Laws, and has caused corrections to be made where necessary; and

WHEREAS, your Committee has prepared tax certificates showing the certified rates as adjusted by M.C.L. 211.24E, M.C.L. 211.34, M.C.L. 211.34D, and M.C.L. 211.34E of the General Property Tax Laws, authorized to be spread against taxable valuations, which certificates are submitted herewith and which are the basis for the tabulation above mentioned, and it is recommended that the Board of Commissioners authorize the Equalization Director to sign these certificates and;

WHEREAS, the electorate of the State of Michigan amended Article IX of the constitution and added Section 36 and;

WHEREAS, the legislature, as directed, implemented said legislation under Section 37 of the General Property Tax Act and the 1976 State School Code, as amended, and;

WHEREAS, the certified rates are subject to M.C.L. 211.36 which allow additional millage to be voted up to and including December 7, 2001 for schools and, if adopted, up to and including November 7, 2001 for taxing jurisdiction, as specified in said section; said additional millage (s) would require Board approval before they could be spread, and;

WHEREAS, the electorate of the State of Michigan voted to limit school operating levies on homestead and non-homestead property taxes in accordance with this report;

NOW THEREFORE BE IT RESOLVED that this Board adopt the attached certificates from the Finance Committee with the recommendations herein contained as part of the permanent records of the Board.

BE IT FURTHER RESOLVED that the Clerk be authorized and directed to sign the several tax certificates on which the attached tabulation was based, thereby authorizing and directing the various assessing officers to spread the rates against the taxable valuation set forth herein for 2000.

BE IT STILL FURTHER RESOLVED that the Oakland County Board of Commissioners, in compliance with the General Property Tax Act and the 50 mill limitation, directs the Equalization Division to revise the apportionment report for 2000 as follows:

<u>Tax Authority</u>	<u>Previous Rate</u>	<u>Revised Rate</u>	<u>Reason for change</u>
Township of Groveland	1.0000	4.5000	November Election
Township of Oxford	8.5492	9.9092	November Election
Village of Oxford	4.0223	5.3823	November Election
City of Berkley	14.8496	15.1846	Revision
City of Huntington Woods	20.7312	20.7812	Revision
West Bloomfield Schools (hold harmless)	4.4077	4.2711	Revision
Romeo Schools (transfer debt)	3.7928	6.3928	Correction

Chairperson, on behalf of the Finance Committee, I move the adoption of the foregoing resolution.

FINANCE COMMITTEE

Sue Ann Douglas  
Chairperson

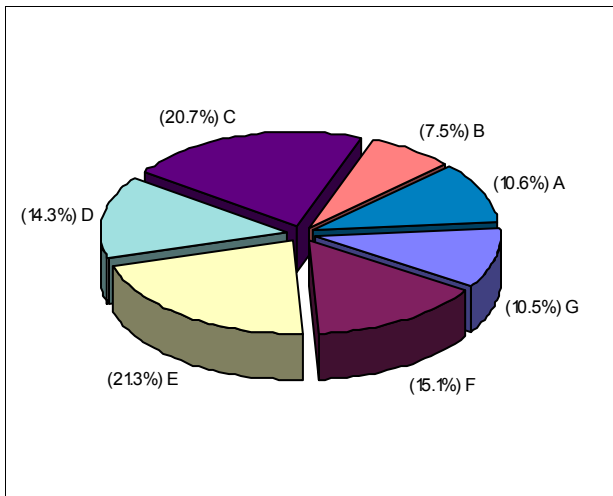
2000 APPORTIONMENT OF LOCAL TAXES

OAKLAND COUNTY, MICHIGAN

THE TOTAL TAX LEVY FOR 2000  
AD VALOREM PROPERTY TAXES AND PERCENTAGE

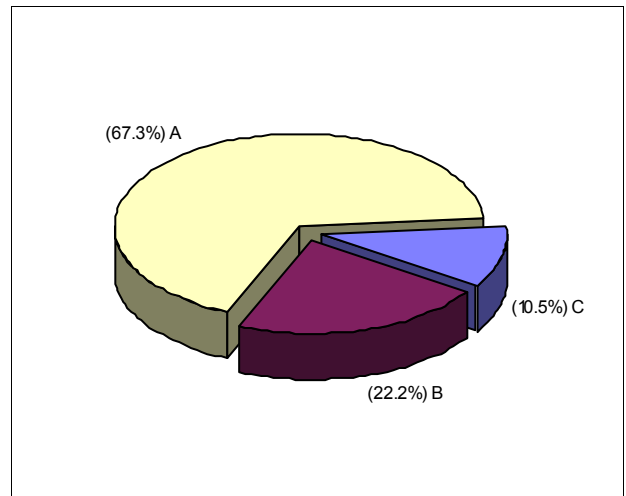
COUNTY OPERATING	185,913,488	10.57%
TOWNSHIPS & VILLAGES	131,539,071	7.48%
CITIES	364,700,451	20.74%
LOCAL SCHOOL DISTRICTS		
HOMESTEAD	251,270,995	14.29%
NON-HOMESTEAD	374,585,680	21.31%
STATE EDUCATION TAX	266,224,565	15.14%
MISCELLANEOUS		
INTERMEDIATE SCHOOLS	92,099,583	5.24%
COMMUNITY COLLEGES	71,523,937	4.07%
PARKS & RECREATION	10,542,493	0.60%
HURON CLINTON AUTHORITY	9,770,442	0.56%
TOTAL ESTIMATED TAXES	1,758,170,704	100.00%

$$\frac{\text{TOTAL TAX}}{\text{TOTAL TAXABLE VALUE}} = \frac{1,758,170,704}{44,370,760,909} = \$39.62 \text{ PER THOUSAND TAXABLE VALUE}$$



- A = COUNTY OPERATING
- B = TWP & VILLAGES
- C = CITIES
- D = HOMESTEAD
- E = NON-HOMESTEAD
- F = STATE EDUCATION TAX
- G = MISCELLANEOUS

**2000 Breakdown of Estimated Tax Levy by Taxing Jurisdiction**



- A = RESIDENTIAL, AGRICULTURAL & DEVELOPMENTAL
- B = COMMERCIAL
- C = INDUSTRIAL & UTILITIES

**2000 Breakdown of Tax Base By Class of Property**

**TOTAL CERTIFIED TAX RATES BY TOWNSHIP**

2000 APPORTIONMENT OF LOCAL TAX RATES IN OAKLAND COUNTY PER \$1000 OF TAXABLE VALUE

TOWNSHIP/SCHOOL DISTRICT	HOMESTEAD SCHOOL	NON-HOMESTEAD SCHOOL	INTERMED SCHOOL DISTRICT	COMM-UNITY COLLEGE	CITY VILLAGE TOWNSHIP	* COMBINED	HOMESTEAD TOTAL	NON-HOMESTEAD TOTAL
<u>TOWNSHIP OF ADDISON</u>								
150-LAKE ORION /OIS/OCC	13.4910	31.4894	2.0752	1.6109	6.0678	4.6478	27.8927	45.8911
200-OXFORD /OIS/OCC	13.0000	30.1165	2.0752	1.6109	6.0678	4.6478	27.4017	44.5182
204-OXFORD TRANSFER /OIS/OCC	13.0000	30.1165	2.0752	1.6109	6.0678	4.6478	27.4017	44.5182
400-ALMONT /LIS	14.4500	31.7803	3.1189		6.0678	4.6478	28.2845	45.6148
401-ALMONT TRANSFER /LIS/OCC	14.4500	31.7803	3.1189	1.6109	6.0678	4.6478	29.8954	47.2257
700-ROMEO /MIS	12.7951	30.7951	2.0210		6.0678	4.6478	25.5317	43.5317
702-ROMEO TRANSFER /MIS/OCC	12.3928	30.3928	2.0210	1.6109	6.0678	4.6478	26.7403	44.7403
<u>VILLAGE OF LEONARD</u>								
200-OXFORD /OIS/OCC	13.0000	30.1165	2.0752	1.6109	12.0678	4.6478	33.4017	50.5182
<u>CHARTER TOWNSHIP OF BLOOMFIELD</u>								
010-AVONDALE /OIS/OCC	14.8190	31.0000	2.0752	1.6109	7.5408	4.6478	30.6937	46.8747
030-BIRMINGHAM /OIS/OCC	18.9000	25.4500	2.0752	1.6109	7.5408	4.6478	34.7747	41.3247
034-BLM TWP VILLAGE SUB /OIS/OCC	18.9000	25.4500	2.0752	1.6109	7.5408	4.6478	34.7747	41.3247
040-BLOOMFIELD HILLS /OIS/OCC	16.3861	24.6700	2.0752	1.6109	7.5408	4.6478	32.2608	40.5447
210-PONTIAC /OIS/OCC	8.8000	26.6758	2.0752	1.6109	7.5408	4.6478	24.6747	42.5505
* COMBINED-CONSISTS OF:								
COUNTY OPERATING	4.1900							
PARKS AND RECREATION	0.2376							
HURON CLINTON AUTHORITY	<u>0.2202</u>							
TOTAL	4.6478							



TOTAL CERTIFIED TAX RATES BY TOWNSHIP

2000 APPORTIONMENT OF LOCAL TAX RATES IN OAKLAND COUNTY PER \$1000 OF TAXABLE VALUE

TOWNSHIP/SCHOOL DISTRICT	HOMESTEAD SCHOOL	NON-HOMESTEAD SCHOOL	INTERMED SCHOOL DISTRICT	COMM-UNITY COLLEGE	CITY VILLAGE TOWNSHIP	* COMBINED	HOMESTEAD TOTAL	NON-HOMESTEAD TOTAL
<u>CHARTER TOWNSHIP OF BRANDON</u>								
050-BRANDON /OIS/OCC	14.2400	31.3443	2.0752	1.6109	7.3971	4.6478	29.9710	47.0753
059-BRANDON PP /OIS/OCC	14.2400	31.3443	2.0752	1.6109	7.3971	4.6478	29.9710	47.0753
200-OXFORD /OIS/OCC	13.0000	30.1165	2.0752	1.6109	7.3971	4.6478	28.7310	45.8475
202-OXFORD TRANSFER /OIS/OCC	13.6000	30.7165	2.0752	1.6109	7.3971	4.6478	29.3310	46.4475
209-OXFORD PP /OIS/OCC	13.0000	30.1165	2.0752	1.6109	7.3971	4.6478	28.7310	45.8475
<u>VILLAGE OF ORTONVILLE</u>								
050-BRANDON /OIS/OCC	14.2400	31.3443	2.0752	1.6109	15.3971	4.6478	37.9710	55.0753
054-BRANDON TIFA /OIS/OCC	14.2400	31.3443	2.0752	1.6109	15.3971	4.6478	37.9710	55.0753
055-BRANDON TIFA PP /OIS/OCC	14.2400	31.3443	2.0752	1.6109	15.3971	4.6478	37.9710	55.0753
059-BRANDON PP /OIS/OCC	14.2400	31.3443	2.0752	1.6109	15.3971	4.6478	37.9710	55.0753
<u>CHARTER TOWNSHIP OF COMMERCE</u>								
140-HURON VALLEY /OIS/OCC	11.9773	29.8729	2.0752	1.6109	3.1008	4.6478	23.4120	41.3076
270-WALLED LAKE /OIS/OCC	14.0982	29.1000	2.0752	1.6109	3.1008	4.6478	25.5329	40.5347
279-WALLED LAKE TIFA-B /OIS/OCC	14.0982	29.1000	2.0752	1.6109	3.1008	4.6478	25.5329	40.5347
<u>VILLAGE OF WOLVERINE LAKE</u>								
270-WALLED LAKE /OIS/OCC	14.0982	29.1000	2.0752	1.6109	12.6738	4.6478	35.1059	50.1077

\* SEE PAGE 2

TOTAL CERTIFIED TAX RATES BY TOWNSHIP

2000 APPORTIONMENT OF LOCAL TAX RATES IN OAKLAND COUNTY PER \$1000 OF TAXABLE VALUE

TOWNSHIP/SCHOOL DISTRICT	HOMESTEAD SCHOOL	NON-HOMESTEAD SCHOOL	INTERMED SCHOOL DISTRICT	COMM-UNITY COLLEGE	CITY VILLAGE TOWNSHIP	*	HOMESTEAD TOTAL	NON-HOMESTEAD TOTAL
<u>TOWNSHIP OF GROVELAND</u>								
050-BRANDON /OIS/OCC	14.2400	31.3443	2.0752	1.6109	4.5000	4.6478	27.0739	44.1782
058-GDR TO BRAN TRAN 5/26/98 /GIS/MCC	12.0500	29.1543	3.5894	1.8694	4.5000	4.6478	26.6566	43.7609
130-HOLLY /OIS/OCC	13.0000	31.0000	2.0752	1.6109	4.5000	4.6478	25.8339	43.8339
500-GOODRICH /GIS/MCC	13.7500	31.7500	3.5894	1.8694	4.5000	4.6478	28.3566	46.3566
<u>CHARTER TOWNSHIP OF HIGHLAND</u>								
140-HURON VALLEY /OIS/OCC	11.9773	29.8729	2.0752	1.6109	6.3410	4.6478	26.6522	44.5478
<u>TOWNSHIP OF HOLLY</u>								
130-HOLLY /OIS/OCC	13.0000	31.0000	2.0752	1.6109	2.4052	4.6478	23.7391	41.7391
550-GRAND BLANC /GIS/MCC	8.8000	26.6311	3.5894	1.8694	2.4052	4.6478	21.3118	39.1429
<u>VILLAGE OF HOLLY</u>								
130-HOLLY /OIS/OCC	13.0000	31.0000	2.0752	1.6109	18.9484	4.6478	40.2823	58.2823
<u>CHARTER TOWNSHIP OF INDEPENDENCE</u>								
070-CLARKSTON /OIS/OCC	13.0000	30.6772	2.0752	1.6109	8.1787	4.6478	29.5126	47.1898
071-CLARKSTON TRANSFER /OIS/OCC	13.0000	30.6772	2.0752	1.6109	8.1787	4.6478	29.5126	47.1898
150-LAKE ORION /OIS/OCC	13.4910	31.4894	2.0752	1.6109	8.1787	4.6478	30.0036	48.0020
280-WATERFORD /OIS/OCC	9.1700	27.1700	2.0752	1.6109	8.1787	4.6478	25.6826	43.6826

\* SEE PAGE 2

TOTAL CERTIFIED TAX RATES BY TOWNSHIP

2000 APPORTIONMENT OF LOCAL TAX RATES IN OAKLAND COUNTY PER \$1000 OF TAXABLE VALUE

TOWNSHIP/SCHOOL DISTRICT	HOMESTEAD SCHOOL	NON-HOMESTEAD SCHOOL	INTERMED SCHOOL DISTRICT	COMM-UNITY COLLEGE	CITY VILLAGE TOWNSHIP	* COMBINED	HOMESTEAD TOTAL	NON-HOMESTEAD TOTAL
<u>CHARTER TOWNSHIP OF LYON</u>								
240-SOUTH LYON /OIS/OCC	14.0000	31.8524	2.0752	1.6109	5.4271	4.6478	27.7610	45.6134
650-NORTHVILLE /WIS/SCC	11.0000	29.0000	1.9789	1.8310	5.4271	4.6478	24.8848	42.8848
<u>CHARTER TOWNSHIP OF MILFORD</u>								
140-HURON VALLEY /OIS/OCC	11.9773	29.8729	2.0752	1.6109	7.4616	4.6478	27.7728	45.6684
143-HURON VALLEY ACT 189 /OIS/OCC	11.9773	29.8729	2.0752	1.6109	7.4616	4.6478	27.7728	45.6684
240-SOUTH LYON /OIS/OCC	14.0000	31.8524	2.0752	1.6109	7.4616	4.6478	29.7955	47.6479
<u>VILLAGE OF MILFORD</u>								
140-HURON VALLEY /OIS/OCC	11.9773	29.8729	2.0752	1.6109	16.5419	4.6478	36.8531	54.7487
141-MILFORD VILLAGE DDA /OIS/OCC	11.9773	29.8729	2.0752	1.6109	18.5419	4.6478	38.8531	56.7487
<u>TOWNSHIP OF NOVI</u>								
650-NORTHVILLE /WIS/SCC	11.0000	29.0000	1.9789	1.8310	3.8702	4.6478	23.3279	41.3279
<u>CHARTER TOWNSHIP OF OAKLAND</u>								
150-LAKE ORION /OIS/OCC	13.4910	31.4894	2.0752	1.6109	5.5512	4.6478	27.3761	45.3745
220-ROCHESTER /OIS/OCC	11.6000	29.2508	2.0752	1.6109	5.5512	4.6478	25.4851	43.1359
700-ROMEO /MIS	12.7951	30.7951	2.0210		5.5512	4.6478	25.0151	43.0151

\* SEE PAGE 2

TOTAL CERTIFIED TAX RATES BY TOWNSHIP

2000 APPORTIONMENT OF LOCAL TAX RATES IN OAKLAND COUNTY PER \$1000 OF TAXABLE VALUE

TOWNSHIP/SCHOOL DISTRICT	HOMESTEAD SCHOOL	NON-HOMESTEAD SCHOOL	INTERMED SCHOOL DISTRICT	COMM-UNITY COLLEGE	CITY VILLAGE TOWNSHIP	* COMBINED	HOMESTEAD TOTAL	NON-HOMESTEAD TOTAL
<u>CHARTER TOWNSHIP OF ORION</u>								
070-CLARKSTON /OIS/OCC	13.0000	30.6772	2.0752	1.6109	6.0405	4.6478	27.3744	45.0516
150-LAKE ORION /OIS/OCC	13.4910	31.4894	2.0752	1.6109	6.0405	4.6478	27.8654	45.8638
210-PONTIAC /OIS/OCC	8.8000	26.6758	2.0752	1.6109	6.0405	4.6478	23.1744	41.0502
220-ROCHESTER /OIS/OCC	11.6000	29.2508	2.0752	1.6109	6.0405	4.6478	25.9744	43.6252
<u>VILLAGE OF LAKE ORION</u>								
150-LAKE ORION /OIS/OCC	13.4910	31.4894	2.0752	1.6109	19.1335	4.6478	40.9584	58.9568
<u>CHARTER TOWNSHIP OF OXFORD</u>								
150-LAKE ORION /OIS/OCC	13.4910	31.4894	2.0752	1.6109	9.9092	4.6478	31.7341	49.7325
200-OXFORD /OIS/OCC	13.0000	30.1165	2.0752	1.6109	9.9092	4.6478	31.2431	48.3596
203-OXFORD TRANSFER /OIS/OCC	13.0000	30.1165	2.0752	1.6109	9.9092	4.6478	31.2431	48.3596
<u>VILLAGE OF OXFORD</u>								
200-OXFORD /OIS/OCC	13.0000	30.1165	2.0752	1.6109	18.9107	4.6478	40.2446	57.3611
205-OXFORD VILLAGE DDA /OIS/OCC	13.0000	30.1165	2.0752	1.6109	18.9107	4.6478	40.2446	57.3611
<u>TOWNSHIP OF ROSE</u>								
130-HOLLY /OIS/OCC	13.0000	31.0000	2.0752	1.6109	2.6207	4.6478	23.9546	41.9546
450-FENTON /GIS/MCC	13.6279	31.4191	3.5894	1.8694	2.6207	4.6478	26.3552	44.1464
<u>VILLAGE OF HOLLY</u>								
130-HOLLY /OIS/OCC	13.0000	31.0000	2.0752	1.6109	19.1639	4.6478	40.4978	58.4978

\* SEE PAGE 2

TOTAL CERTIFIED TAX RATES BY TOWNSHIP

2000 APPORTIONMENT OF LOCAL TAX RATES IN OAKLAND COUNTY PER \$1000 OF TAXABLE VALUE

TOWNSHIP/SCHOOL DISTRICT	HOMESTEAD SCHOOL	NON-HOMESTEAD SCHOOL	INTERMED SCHOOL DISTRICT	COMM-UNITY COLLEGE	CITY VILLAGE TOWNSHIP	* COMBINED	HOMESTEAD TOTAL	NON-HOMESTEAD TOTAL
<u>CHARTER TOWNSHIP OF ROYAL OAK</u>								
020-BERKLEY /OIS/OCC	9.8700	27.8700	2.0752	1.6109	8.0183	4.6478	26.2222	44.2222
022-BERKLEY R.O.T. PP /OIS/OCC	9.8700	27.8700	2.0752	1.6109	8.0183	4.6478	26.2222	44.2222
110-FERNDALE /OIS/OCC	13.0000	31.0000	2.0752	1.6109	8.0183	4.6478	29.3522	47.3522
111-FERNDALE R.O.T. PP /OIS/OCC	13.0000	31.0000	2.0752	1.6109	8.0183	4.6478	29.3522	47.3522
118-FERNDALE PP DDA /OIS/OCC	13.0000	31.0000	2.0752	1.6109	8.0183	4.6478	29.3522	47.3522
119-FERNDALE DDA /OIS/OCC	13.0000	31.0000	2.0752	1.6109	8.0183	4.6478	29.3522	47.3522
190-OAK PARK /OIS/OCC	14.2792	32.2575	2.0752	1.6109	8.0183	4.6478	30.6314	48.6097
191-OAK PARK R.O.T. PP /OIS/OCC	14.2792	32.2575	2.0752	1.6109	8.0183	4.6478	30.6314	48.6097
198-OAK PARK DDA PP /OIS/OCC	14.2792	32.2575	2.0752	1.6109	8.0183	4.6478	30.6314	48.6097
199-OAK PARK DDA /OIS/OCC	14.2792	32.2575	2.0752	1.6109	8.0183	4.6478	30.6314	48.6097
<u>TOWNSHIP OF SOUTHFIELD</u>								
030-BIRMINGHAM /OIS/OCC	18.9000	25.4500	2.0752	1.6109	0.6000	4.6478	27.8339	34.3839
250-SOUTHFIELD /OIS/OCC	28.7971	28.7971	2.0752	1.6109	0.6000	4.6478	37.7310	37.7310
<u>VILLAGE OF BINGHAM FARMS</u>								
030-BIRMINGHAM /OIS/OCC	18.9000	25.4500	2.0752	1.6109	7.7236	4.6478	34.9575	41.5075
250-SOUTHFIELD /OIS/OCC	28.7971	28.7971	2.0752	1.6109	7.7236	4.6478	44.8546	44.8546
<u>VILLAGE OF FRANKLIN</u>								
030-BIRMINGHAM /OIS/OCC	18.9000	25.4500	2.0752	1.6109	9.6084	4.6478	36.8423	43.3923
<u>VILLAGE OF BEVERLY HILLS</u>								
030-BIRMINGHAM /OIS/OCC	18.9000	25.4500	2.0752	1.6109	14.1187	4.6478	41.3526	47.9026

\* SEE PAGE 2

TOTAL CERTIFIED TAX RATES BY TOWNSHIP

2000 APPORTIONMENT OF LOCAL TAX RATES IN OAKLAND COUNTY PER \$1000 OF TAXABLE VALUE

TOWNSHIP/SCHOOL DISTRICT	HOMESTEAD SCHOOL	NON-HOMESTEAD SCHOOL	INTERMED SCHOOL DISTRICT	COMM-UNITY COLLEGE	CITY VILLAGE TOWNSHIP	* COMBINED	HOMESTEAD TOTAL	NON-HOMESTEAD TOTAL
<u>CHARTER TOWNSHIP OF SPRINGFIELD</u>								
050-BRANDON /OIS/OCC	14.2400	31.3443	2.0752	1.6109	5.0369	4.6478	27.6108	44.7151
070-CLARKSTON /OIS/OCC	13.0000	30.6772	2.0752	1.6109	5.0369	4.6478	26.3708	44.0480
130-HOLLY /OIS/OCC	13.0000	31.0000	2.0752	1.6109	5.0369	4.6478	26.3708	44.3708
<u>CHARTER TOWNSHIP OF WATERFORD</u>								
070-CLARKSTON /OIS/OCC	13.0000	30.6772	2.0752	1.6109	9.6419	4.6478	30.9758	48.6530
210-PONTIAC /OIS/OCC	8.8000	26.6758	2.0752	1.6109	9.6419	4.6478	26.7758	44.6516
280-WATERFORD /OIS/OCC	9.1700	27.1700	2.0752	1.6109	9.6419	4.6478	27.1458	45.1458
<u>CHARTER TOWNSHIP OF WEST BLOOMFIELD</u>								
030-BIRMINGHAM /OIS/OCC	18.9000	25.4500	2.0752	1.6109	8.0132	4.6478	35.2471	41.7971
040-BLOOMFIELD HILLS /OIS/OCC	16.3861	24.6700	2.0752	1.6109	8.0132	4.6478	32.7332	41.0171
100-FARMINGTON /OIS/OCC	19.2614	26.0000	2.0752	1.6109	8.0132	4.6478	35.6085	42.3471
210-PONTIAC /OIS/OCC	8.8000	26.6758	2.0752	1.6109	8.0132	4.6478	25.1471	43.0229
270-WALLED LAKE /OIS/OCC	14.0982	29.1000	2.0752	1.6109	8.0132	4.6478	30.4453	45.4471
280-WATERFORD /OIS/OCC	9.1700	27.1700	2.0752	1.6109	8.0132	4.6478	25.5171	43.5171
290-WEST BLOOMFIELD /OIS/OCC	15.7611	29.4666	2.0752	1.6109	8.0132	4.6478	32.1082	45.8137

\* SEE PAGE 2

TOTAL CERTIFIED TAX RATES BY TOWNSHIP

2000 APPORTIONMENT OF LOCAL TAX RATES IN OAKLAND COUNTY PER \$1000 OF TAXABLE VALUE

TOWNSHIP/SCHOOL DISTRICT	HOMESTEAD SCHOOL	NON-HOMESTEAD SCHOOL	INTERMED SCHOOL DISTRICT	COMM-UNITY COLLEGE	CITY VILLAGE TOWNSHIP	* COMBINED	HOMESTEAD TOTAL	NON-HOMESTEAD TOTAL
<u>CHARTER TOWNSHIP OF WHITE LAKE</u>								
070-CLARKSTON /OIS/OCC	13.0000	30.6772	2.0752	1.6109	6.2950	4.6478	27.6289	45.3061
130-HOLLY /OIS/OCC	13.0000	31.0000	2.0752	1.6109	6.2950	4.6478	27.6289	45.6289
140-HURON VALLEY /OIS/OCC	11.9773	29.8729	2.0752	1.6109	6.2950	4.6478	26.6062	44.5018
270-WALLED LAKE /OIS/OCC	14.0982	29.1000	2.0752	1.6109	6.2950	4.6478	28.7271	43.7289
280-WATERFORD /OIS/OCC	9.1700	27.1700	2.0752	1.6109	6.2950	4.6478	23.7989	41.7989

\* SEE PAGE 2

## TOTAL CERTIFIED TAX RATES BY CITY

2000 APPORTIONMENT OF LOCAL TAX RATES IN OAKLAND COUNTY PER \$1000 OF TAXABLE VALUE

CITY/SCHOOL DISTRICT	HOMESTEAD SCHOOL	NON-HOMESTEAD SCHOOL	INTERMED SCHOOL DISTRICT	COMM-UNITY COLLEGE	CITY VILLAGE TOWNSHIP	* COMBINED	HOMESTEAD TOTAL	NON-HOMESTEAD TOTAL
<u>CITY OF AUBURN HILLS</u>								
010-AVONDALE /OIS/OCC	14.8190	31.0000	2.0752	1.6109	11.8686	4.6478	35.0215	51.2025
015-AVONDALE TIFA A /OIS/OCC	14.8190	31.0000	2.0752	1.6109	11.8686	4.6478	35.0215	51.2025
150-LAKE ORION /OIS/OCC	13.4910	31.4894	2.0752	1.6109	11.8686	4.6478	33.6935	51.6919
152-LAKE ORION TRANSFER /OIS/OCC	16.2910	34.2894	2.0752	1.6109	11.8686	4.6478	36.4935	54.4919
210-PONTIAC /OIS/OCC	8.8000	26.6758	2.0752	1.6109	11.8686	4.6478	29.0025	46.8783
215-PONTIAC TIFA B /OIS/OCC	8.8000	26.6758	2.0752	1.6109	11.8686	4.6478	29.0025	46.8783
216-PONTIAC TIFA A /OIS/OCC	8.8000	26.6758	2.0752	1.6109	11.8686	4.6478	29.0025	46.8783
217-PONTIAC TIFA D /OIS/OCC	8.8000	26.6758	2.0752	1.6109	11.8686	4.6478	29.0025	46.8783
218-PONTIAC LDFA /OIS/OCC	8.8000	26.6758	2.0752	1.6109	11.8686	4.6478	29.0025	46.8783
220-ROCHESTER /OIS/OCC	11.6000	29.2508	2.0752	1.6109	11.8686	4.6478	31.8025	49.4533
<u>CITY OF BERKLEY</u>								
020-BERKLEY /OIS/OCC	9.8700	27.8700	2.0752	1.6109	15.1846	4.6478	33.3885	51.3885
025-BERKLEY DDA /OIS/OCC	9.8700	27.8700	2.0752	1.6109	17.1656	4.6478	35.3695	53.3695
230-ROYAL OAK /OIS/OCC	14.7700	27.6000	2.0752	1.6109	15.1846	4.6478	38.2885	51.1185
<u>CITY OF BIRMINGHAM</u>								
030-BIRMINGHAM /OIS/OCC	18.9000	25.4500	2.0752	1.6109	15.7231	4.6478	42.9570	49.5070
<u>CITY OF BLOOMFIELD HILLS</u>								
030-BIRMINGHAM /OIS/OCC	18.9000	25.4500	2.0752	1.6109	7.6400	4.6478	34.8739	41.4239
040-BLOOMFIELD HILLS /OIS/OCC	16.3861	24.6700	2.0752	1.6109	7.6400	4.6478	32.3600	40.6439

\* SEE PAGE 2



TOTAL CERTIFIED TAX RATES BY CITY

2000 APPORTIONMENT OF LOCAL TAX RATES IN OAKLAND COUNTY PER \$1000 OF TAXABLE VALUE

CITY/SCHOOL DISTRICT	HOMESTEAD SCHOOL	NON-HOMESTEAD SCHOOL	INTERMED SCHOOL DISTRICT	COMM-UNITY COLLEGE	CITY VILLAGE TOWNSHIP	* COMBINED	HOMESTEAD TOTAL	NON-HOMESTEAD TOTAL
<u>CITY OF CLARKSTON VILLAGE</u>								
070-CLARKSTON /OIS/OCC	13.0000	30.6772	2.0752	1.6109	14.2800	4.6478	35.6139	53.2911
075-CLARKSTON PP /OIS/OCC	13.0000	30.6772	2.0752	1.6109	14.2800	4.6478	35.6139	53.2911
<u>CITY OF CLAWSON</u>								
080-CLAWSON /OIS/OCC	15.8728	33.0250	2.0752	1.6109	14.3811	4.6478	38.5878	55.7400
089-CLAWSON DDA /OIS/OCC	15.8728	33.0250	2.0752	1.6109	14.3811	4.6478	38.5878	55.7400
<u>CITY OF FARMINGTON</u>								
100-FARMINGTON /OIS/OCC	19.2614	26.0000	2.0752	1.6109	16.0671	4.6478	43.6624	50.4010
101-FARMINGTON DDA /OIS/OCC	19.2614	26.0000	2.0752	1.6109	18.0517	4.6478	45.6470	52.3856
<u>CITY OF FARMINGTON HILLS</u>								
060-CLARENCEVILLE /OIS/SCC	10.7395	27.7749	2.0752	1.8310	11.0843	4.6478	30.3778	47.4132
100-FARMINGTON /OIS/OCC	19.2614	26.0000	2.0752	1.6109	11.0843	4.6478	38.6796	45.4182
270-WALLED LAKE /OIS/OCC	14.0982	29.1000	2.0752	1.6109	11.0843	4.6478	33.5164	48.5182
<u>CITY OF FERNDALE</u>								
110-FERNDALE /OIS/OCC	13.0000	31.0000	2.0752	1.6109	27.1553	4.6478	48.4892	66.4892
112-FERNDALE TIFA /OIS/OCC	13.0000	31.0000	2.0752	1.6109	28.6777	4.6478	50.0116	68.0116
113-FERNDALE-24-DDA /OIS/OCC	13.0000	31.0000	2.0752	1.6109	28.6777	4.6478	50.0116	68.0116
120-HAZEL PARK /OIS/OCC	9.0000	26.9352	2.0752	1.6109	27.1553	4.6478	44.4892	62.4244

\* SEE PAGE 2

TOTAL CERTIFIED TAX RATES BY CITY

2000 APPORTIONMENT OF LOCAL TAX RATES IN OAKLAND COUNTY PER \$1000 OF TAXABLE VALUE

CITY/SCHOOL DISTRICT	HOMESTEAD SCHOOL	NON-HOMESTEAD SCHOOL	INTERMED SCHOOL DISTRICT	COMM-UNITY COLLEGE	CITY VILLAGE TOWNSHIP	* COMBINED	HOMESTEAD TOTAL	NON-HOMESTEAD TOTAL
<u>CITY OF HAZEL PARK</u>								
120-HAZEL PARK /OIS/OCC	9.0000	26.9352	2.0752	1.6109	23.3487	4.6478	40.6826	58.6178
125-HAZEL PARK DDA 3A /OIS/OCC	9.0000	26.9352	2.0752	1.6109	23.3487	4.6478	40.6826	58.6178
126-HAZEL PARK DDA-4 /OIS/OCC	9.0000	26.9352	2.0752	1.6109	23.3487	4.6478	40.6826	58.6178
127-HAZEL PARK DDA 2 /OIS/OCC	9.0000	26.9352	2.0752	1.6109	23.3487	4.6478	40.6826	58.6178
128-HAZEL PARK DDA 3 /OIS/OCC	9.0000	26.9352	2.0752	1.6109	23.3487	4.6478	40.6826	58.6178
129-HAZEL PARK DDA /OIS/OCC	9.0000	26.9352	2.0752	1.6109	23.3487	4.6478	40.6826	58.6178
<u>CITY OF HUNTINGTON WOODS</u>								
020-BERKLEY /OIS/OCC	9.8700	27.8700	2.0752	1.6109	20.7812	4.6478	38.9851	56.9851
230-ROYAL OAK /OIS/OCC	14.7700	27.6000	2.0752	1.6109	20.7812	4.6478	43.8851	56.7151
<u>CITY OF KEEGO HARBOR</u>								
290-WEST BLOOMFIELD /OIS/OCC	15.7611	29.4666	2.0752	1.6109	15.1455	4.6478	39.2405	52.9460
299-KEEGO HARBOR TIFA /OIS/OCC	15.7611	29.4666	2.0752	1.6109	15.1455	4.6478	39.2405	52.9460
<u>CITY OF LAKE ANGELUS</u>								
210-PONTIAC /OIS/OCC	8.8000	26.6758	2.0752	1.6109	10.5000	4.6478	27.6339	45.5097
280-WATERFORD /OIS/OCC	9.1700	27.1700	2.0752	1.6109	10.5000	4.6478	28.0039	46.0039
<u>CITY OF LATHRUP VILLAGE</u>								
250-SOUTHFIELD /OIS/OCC	28.7971	28.7971	2.0752	1.6109	17.9715	4.6478	55.1025	55.1025
258-STHFLD-LATHRUP DDA /OIS/OCC	28.7971	28.7971	2.0752	1.6109	19.9715	4.6478	57.1025	57.1025
259-SOUTHFLD/40/DDA /OIS/OCC	28.7971	28.7971	2.0752	1.6109	19.9715	4.6478	57.1025	57.1025

\* SEE PAGE 2

TOTAL CERTIFIED TAX RATES BY CITY

2000 APPORTIONMENT OF LOCAL TAX RATES IN OAKLAND COUNTY PER \$1000 OF TAXABLE VALUE

CITY/SCHOOL DISTRICT	HOMESTEAD SCHOOL	NON-HOMESTEAD SCHOOL	INTERMED SCHOOL DISTRICT	COMM-UNITY COLLEGE	CITY VILLAGE TOWNSHIP	* COMBINED	HOMESTEAD TOTAL	NON-HOMESTEAD TOTAL
<u>CITY OF MADISON HEIGHTS</u>								
160-LAMPHERE /OIS/OCC	24.4000	27.4000	2.0752	1.6109	16.9509	4.6478	49.6848	52.6848
169-LAMPHERE-44-TIFA /OIS/OCC	24.4000	27.4000	2.0752	1.6109	16.9509	4.6478	49.6848	52.6848
170-MADISON /OIS/OCC	13.6000	31.6000	2.0752	1.6109	16.9509	4.6478	38.8848	56.8848
172-MADISON DDA /OIS/OCC	13.6000	31.6000	2.0752	1.6109	16.9509	4.6478	38.8848	56.8848
230-ROYAL OAK /OIS/OCC	14.7700	27.6000	2.0752	1.6109	16.9509	4.6478	40.0548	52.8848
236-ROYAL OAK DDA/44 /OIS/OCC	14.7700	27.6000	2.0752	1.6109	16.9509	4.6478	40.0548	52.8848
<u>CITY OF NORTHVILLE</u>								
650-NORTHVILLE /WIS/SCC	11.0000	29.0000	1.9789	1.8310	17.3439	4.6478	36.8016	54.8016
<u>CITY OF NOVI</u>								
180-NOVI /OIS/OCC	16.3582	29.2663	2.0752	1.6109	10.5416	4.6478	35.2337	48.1418
182-NOVI TRANSFER /OIS/SCC	16.3582	29.2663	2.0752	1.8310	10.5416	4.6478	35.4538	48.3619
183-NOVI TRANSFER /OIS/SCC	16.3582	29.2663	2.0752	1.8310	10.5416	4.6478	35.4538	48.3619
184-S LYON TO NOVI TRANS 97 /OIS/OCC	16.5282	29.4363	2.0752	1.6109	10.5416	4.6478	35.4037	48.3118
240-SOUTH LYON /OIS/OCC	14.0000	31.8524	2.0752	1.6109	10.5416	4.6478	32.8755	50.7279
270-WALLED LAKE /OIS/OCC	14.0982	29.1000	2.0752	1.6109	10.5416	4.6478	32.9737	47.9755
275-WALLED LAKE TRANSFER /OIS/OCC	15.3082	30.3100	2.0752	1.6109	10.5416	4.6478	34.1837	49.1855
650-NORTHVILLE /WIS/SCC	11.0000	29.0000	1.9789	1.8310	10.5416	4.6478	29.9993	47.9993
651-NORTHVILLE TRANSFER /WIS/OCC	11.3500	29.3500	1.9789	1.6109	10.5416	4.6478	30.1292	48.1292

\* SEE PAGE 2

TOTAL CERTIFIED TAX RATES BY CITY

2000 APPORTIONMENT OF LOCAL TAX RATES IN OAKLAND COUNTY PER \$1000 OF TAXABLE VALUE

CITY/SCHOOL DISTRICT	HOMESTEAD SCHOOL	NON-HOMESTEAD SCHOOL	INTERMED SCHOOL DISTRICT	COMM-UNITY COLLEGE	CITY VILLAGE TOWNSHIP	* COMBINED	HOMESTEAD TOTAL	NON-HOMESTEAD TOTAL
<u>CITY OF OAK PARK</u>								
020-BERKLEY /OIS/OCC	9.8700	27.8700	2.0752	1.6109	25.5108	4.6478	43.7147	61.7147
110-FERNDALE /OIS/OCC	13.0000	31.0000	2.0752	1.6109	25.5108	4.6478	46.8447	64.8447
190-OAK PARK /OIS/OCC	14.2792	32.2575	2.0752	1.6109	25.5108	4.6478	48.1239	66.1022
<u>CITY OF ORCHARD LAKE VILLAGE</u>								
040-BLOOMFIELD HILLS /OIS/OCC	16.3861	24.6700	2.0752	1.6109	10.1100	4.6478	34.8300	43.1139
270-WALLED LAKE /OIS/OCC	14.0982	29.1000	2.0752	1.6109	10.1100	4.6478	32.5421	47.5439
290-WEST BLOOMFIELD /OIS/OCC	15.7611	29.4666	2.0752	1.6109	10.1100	4.6478	34.2050	47.9105
<u>CITY OF PLEASANT RIDGE</u>								
110-FERNDALE /OIS/OCC	13.0000	31.0000	2.0752	1.6109	18.9425	4.6478	40.2764	58.2764
117-FERNDALE 60 DDA /OIS/OCC	13.0000	31.0000	2.0752	1.6109	18.9425	4.6478	40.2764	58.2764
<u>CITY OF PONTIAC</u>								
210-PONTIAC /OIS/OCC	8.8000	26.6758	2.0752	1.6109	26.7836	4.6478	43.9175	61.7933
212-PONTIAC TIFA 3 /OIS/OCC	8.8000	26.6758	2.0752	1.6109	26.7836	4.6478	43.9175	61.7933
213-PONTIAC DDA 1 /OIS/OCC	8.8000	26.6758	2.0752	1.6109	26.7836	4.6478	43.9175	61.7933
214-PONTIAC DDA 2 /OIS/OCC	8.8000	26.6758	2.0752	1.6109	26.7836	4.6478	43.9175	61.7933
216-PONTIAC TIFA A /OIS/OCC	8.8000	26.6758	2.0752	1.6109	26.7836	4.6478	43.9175	61.7933
219-PONTIAC TIFA 4 /OIS/OCC	8.8000	26.6758	2.0752	1.6109	26.7836	4.6478	43.9175	61.7933

\* SEE PAGE 2

TOTAL CERTIFIED TAX RATES BY CITY

2000 APPORTIONMENT OF LOCAL TAX RATES IN OAKLAND COUNTY PER \$1000 OF TAXABLE VALUE

CITY/SCHOOL DISTRICT	HOMESTEAD SCHOOL	NON-HOMESTEAD SCHOOL	INTERMED SCHOOL DISTRICT	COMM-UNITY COLLEGE	CITY VILLAGE TOWNSHIP	* COMBINED	HOMESTEAD TOTAL	NON-HOMESTEAD TOTAL
<u>CITY OF ROCHESTER</u>								
220-ROCHESTER /OIS/OCC	11.6000	29.2508	2.0752	1.6109	15.1374	4.6478	35.0713	52.7221
227-ROCHESTER DDA-3 /OIS/OCC	11.6000	29.2508	2.0752	1.6109	15.1374	4.6478	35.0713	52.7221
228-ROCHESTER DDA-2 /OIS/OCC	11.6000	29.2508	2.0752	1.6109	15.1374	4.6478	35.0713	52.7221
229-ROCHESTER DDA-1 /OIS/OCC	11.6000	29.2508	2.0752	1.6109	15.1374	4.6478	35.0713	52.7221
<u>CITY OF ROCHESTER HILLS</u>								
010-AVONDALE /OIS/OCC	14.8190	31.0000	2.0752	1.6109	9.1498	4.6478	32.3027	48.4837
018-AVON-INELIG-RH-LDFA /OIS/OCC	14.8190	31.0000	2.0752	1.6109	9.1498	4.6478	32.3027	48.4837
019-AVON-ELIG-RH-LDFA /OIS/OCC	14.8190	31.0000	2.0752	1.6109	9.1498	4.6478	32.3027	48.4837
220-ROCHESTER /OIS/OCC	11.6000	29.2508	2.0752	1.6109	9.1498	4.6478	29.0837	46.7345
222-ROCH-ELIGIBLE-LDFA /OIS/OCC	11.6000	29.2508	2.0752	1.6109	9.1498	4.6478	29.0837	46.7345
223-ROCH-INELIGIBLE-LDFA /OIS/OCC	11.6000	29.2508	2.0752	1.6109	9.1498	4.6478	29.0837	46.7345
<u>CITY OF ROYAL OAK</u>								
020-BERKLEY /OIS/OCC	9.8700	27.8700	2.0752	1.6109	12.2293	4.6478	30.4332	48.4332
080-CLAWSON /OIS/OCC	15.8728	33.0250	2.0752	1.6109	12.2293	4.6478	36.4360	53.5882
230-ROYAL OAK /OIS/OCC	14.7700	27.6000	2.0752	1.6109	12.2293	4.6478	35.3332	48.1632
231-ROYAL OAK DDA /OIS/OCC	14.7700	27.6000	2.0752	1.6109	13.9745	4.6478	37.0784	49.9084
232-ROYAL OAK BART LAF /OIS/OCC	14.7700	27.6000	2.0752	1.6109	13.9745	4.6478	37.0784	49.9084
234-ROYAL OAK I-696 DEV /OIS/OCC	14.7700	27.6000	2.0752	1.6109	13.9745	4.6478	37.0784	49.9084

\* SEE PAGE 2

TOTAL CERTIFIED TAX RATES BY CITY

2000 APPORTIONMENT OF LOCAL TAX RATES IN OAKLAND COUNTY PER \$1000 OF TAXABLE VALUE

CITY/SCHOOL DISTRICT	HOMESTEAD SCHOOL	NON-HOMESTEAD SCHOOL	INTERMED SCHOOL DISTRICT	COMM-UNITY COLLEGE	CITY VILLAGE TOWNSHIP	* COMBINED	HOMESTEAD TOTAL	NON-HOMESTEAD TOTAL
<u>CITY OF SOUTHFIELD</u>								
030-BIRMINGHAM /OIS/OCC	18.9000	25.4500	2.0752	1.6109	16.7704	4.6478	44.0043	50.5543
190-OAK PARK /OIS/OCC	14.2792	32.2575	2.0752	1.6109	16.7704	4.6478	39.3835	57.3618
192-OAK PARK TIFA/DDA /OIS/OCC	14.2792	32.2575	2.0752	1.6109	18.7262	4.6478	41.3393	59.3176
199-OAK PARK DDA /OIS/OCC	14.2792	32.2575	2.0752	1.6109	18.7262	4.6478	41.3393	59.3176
250-SOUTHFIELD /OIS/OCC	28.7971	28.7971	2.0752	1.6109	16.7704	4.6478	53.9014	53.9014
251-SOUTHFIELD LDFA A /OIS/OCC	28.7971	28.7971	2.0752	1.6109	16.7704	4.6478	53.9014	53.9014
252-SOUTHFIELD TIFA-2 /OIS/OCC	28.7971	28.7971	2.0752	1.6109	16.7704	4.6478	53.9014	53.9014
253-SOUTHFIELD LDFA-1 /OIS/OCC	28.7971	28.7971	2.0752	1.6109	16.7704	4.6478	53.9014	53.9014
254-SOUTHFIELD LDFA-2 /OIS/OCC	28.7971	28.7971	2.0752	1.6109	16.7704	4.6478	53.9014	53.9014
255-SOUTHFIELD DDA /OIS/OCC	28.7971	28.7971	2.0752	1.6109	18.7262	4.6478	55.8572	55.8572
256-SOUTHFIELD TIFA/DDA /OIS/OCC	28.7971	28.7971	2.0752	1.6109	18.7262	4.6478	55.8572	55.8572
257-SOUTHFIELD LDFA 3 /OIS/OCC	28.7971	28.7971	2.0752	1.6109	16.7704	4.6478	53.9014	53.9014
<u>CITY OF SOUTH LYON</u>								
240-SOUTH LYON /OIS/OCC	14.0000	31.8524	2.0752	1.6109	14.8312	4.6478	37.1651	55.0175
<u>CITY OF SYLVAN LAKE</u>								
210-PONTIAC /OIS/OCC	8.8000	26.6758	2.0752	1.6109	10.1671	4.6478	27.3010	45.1768
211-PONTIAC PP-84 /OIS/OCC	8.8000	26.6758	2.0752	1.6109	10.1671	4.6478	27.3010	45.1768
290-WEST BLOOMFIELD /OIS/OCC	15.7611	29.4666	2.0752	1.6109	10.1671	4.6478	34.2621	47.9676
292-WEST BLOOMFIELD 84 PP /OIS/OCC	15.7611	29.4666	2.0752	1.6109	10.1671	4.6478	34.2621	47.9676

\* SEE PAGE 2

TOTAL CERTIFIED TAX RATES BY CITY

2000 APPORTIONMENT OF LOCAL TAX RATES IN OAKLAND COUNTY PER \$1000 OF TAXABLE VALUE

CITY/SCHOOL DISTRICT	HOMESTEAD SCHOOL	NON-HOMESTEAD SCHOOL	INTERMED SCHOOL DISTRICT	COMM-UNITY COLLEGE	CITY VILLAGE TOWNSHIP	* COMBINED	HOMESTEAD TOTAL	NON-HOMESTEAD TOTAL
<u>CITY OF TROY</u>								
010-AVONDALE /OIS/OCC	14.8190	31.0000	2.0752	1.6109	9.8036	4.6478	32.9565	49.1375
030-BIRMINGHAM /OIS/OCC	18.9000	25.4500	2.0752	1.6109	9.8036	4.6478	37.0375	43.5875
040-BLOOMFIELD HILLS /OIS/OCC	16.3861	24.6700	2.0752	1.6109	9.8036	4.6478	34.5236	42.8075
160-LAMPHERE /OIS/OCC	24.4000	27.4000	2.0752	1.6109	9.8036	4.6478	42.5375	45.5375
230-ROYAL OAK /OIS/OCC	14.7700	27.6000	2.0752	1.6109	9.8036	4.6478	32.9075	45.7375
260-TROY /OIS/OCC	16.7031	27.3155	2.0752	1.6109	9.8036	4.6478	34.8406	45.4530
262-TROY TRANSFER /OIS/OCC	16.7449	27.3573	2.0752	1.6109	9.8036	4.6478	34.8824	45.4948
265-TROY DDA /OIS/OCC	16.7031	27.3155	2.0752	1.6109	9.8036	4.6478	34.8406	45.4530
750-WARREN /MIS/OCC	14.8163	25.0000	2.0210	1.6109	9.8036	4.6478	32.8996	43.0833
<u>CITY OF WALLED LAKE</u>								
270-WALLED LAKE /OIS/OCC	14.0982	29.1000	2.0752	1.6109	17.7281	4.6478	40.1602	55.1620
278-WALLED LAKE TIFA /OIS/OCC	14.0982	29.1000	2.0752	1.6109	17.7281	4.6478	40.1602	55.1620
279-WALLED LAKE TIFA-B /OIS/OCC	14.0982	29.1000	2.0752	1.6109	17.7281	4.6478	40.1602	55.1620
<u>CITY OF WIXOM</u>								
180-NOVI /OIS/OCC	16.3582	29.2663	2.0752	1.6109	10.9035	4.6478	35.5956	48.5037
240-SOUTH LYON /OIS/OCC	14.0000	31.8524	2.0752	1.6109	10.9035	4.6478	33.2374	51.0898
270-WALLED LAKE /OIS/OCC	14.0982	29.1000	2.0752	1.6109	10.9035	4.6478	33.3356	48.3374
277-WALLED LAKE 96 LDFA /OIS/OCC	14.0982	29.1000	2.0752	1.6109	10.9035	4.6478	33.3356	48.3374
279-WALLED LAKE TIFA-B /OIS/OCC	14.0982	29.1000	2.0752	1.6109	10.9035	4.6478	33.3356	48.3374

\* SEE PAGE 2

**TOWNSHIP AND VILLAGE CERTIFIED TAX RATES**  
**2000 APPORTIONMENT OF LOCAL TAX RATES IN OAKLAND COUNTY PER \$1000 OF TAXABLE VALUE**

TOWNSHIP AND VILLAGE	TOWNSHIP			VILLAGE	TOTAL
	ALLOCATED	VOTED	DEBT OR AUTHORITY		
A TOWNSHIP OF ADDISON	1.2000	4.1178	0.7500		6.0678
AL VILLAGE OF LEONARD	1.2000	4.1178	0.7500	6.0000	12.0678
C CHARTER TOWNSHIP OF BLOOMFIELD	0.0000	0.0000	7.5408		7.5408
D CHARTER TOWNSHIP OF BRANDON	0.0000	0.0000	7.3971		7.3971
DO VILLAGE OF ORTONVILLE	0.0000	0.0000	7.3971	8.0000	15.3971
E CHARTER TOWNSHIP OF COMMERCE	0.0000	0.0000	3.1008		3.1008
EW VILLAGE OF WOLVERINE LAKE	0.0000	0.0000	3.1008	9.5730	12.6738
G TOWNSHIP OF GROVELAND	1.0000	3.5000	0.0000		4.5000
H CHARTER TOWNSHIP OF HIGHLAND	0.0000	0.0000	6.3410		6.3410
I TOWNSHIP OF HOLLY	1.0000	1.4052	0.0000		2.4052
IH VILLAGE OF HOLLY	1.0000	1.4052	0.0000	16.5432	18.9484
J CHARTER TOWNSHIP OF INDEPENDENCE	0.0000	0.0000	8.1787		8.1787
K CHARTER TOWNSHIP OF LYON	0.0000	0.0000	5.4271		5.4271
L CHARTER TOWNSHIP OF MILFORD	0.0000	0.0000	7.4616		7.4616
LM VILLAGE OF MILFORD	0.0000	0.0000	7.4616	9.0803	16.5419
M TOWNSHIP OF NOVI	0.7462	3.1240	0.0000		3.8702
N CHARTER TOWNSHIP OF OAKLAND	0.0000	0.0000	5.5512		5.5512
O CHARTER TOWNSHIP OF ORION	0.0000	0.0000	6.0405		6.0405
OL VILLAGE OF LAKE ORION	0.0000	0.0000	6.0405	13.0930	19.1335



**TOWNSHIP AND VILLAGE CERTIFIED TAX RATES**  
**2000 APPORTIONMENT OF LOCAL TAX RATES IN OAKLAND COUNTY PER \$1000 OF TAXABLE VALUE**

TOWNSHIP AND VILLAGE	TOWNSHIP			VILLAGE	TOTAL
	ALLOCATED	VOTED	DEBT OR AUTHORITY		
P CHARTER TOWNSHIP OF OXFORD	0.0000	0.0000	9.9092		9.9092
PO VILLAGE OF OXFORD	0.0000	0.0000	5.3823	13.5284	18.9107
R TOWNSHIP OF ROSE	1.1207	1.5000	0.0000		2.6207
RH VILLAGE OF HOLLY	1.1207	1.5000	0.0000	16.5432	19.1639
S CHARTER TOWNSHIP OF ROYAL OAK	0.0000	0.0000	8.0183		8.0183
T TOWNSHIP OF SOUTHFIELD	0.0000	0.0000	0.6000		0.6000
TB VILLAGE OF BINGHAM FARMS	0.0000	0.0000	0.9236	6.8000	7.7236
TF VILLAGE OF FRANKLIN	0.0000	0.0000	0.9236	8.6848	9.6084
TH VILLAGE OF BEVERLY HILLS	0.0000	0.0000	0.9236	13.1951	14.1187
U CHARTER TOWNSHIP OF SPRINGFIELD	0.0000	0.0000	5.0369		5.0369
W CHARTER TOWNSHIP OF WATERFORD	0.0000	0.0000	9.6419		9.6419
X CHARTER TOWNSHIP OF WEST BLOOMFIELD	0.0000	0.0000	8.0132		8.0132
Y CHARTER TOWNSHIP OF WHITE LAKE	0.0000	0.0000	6.2950		6.2950

## CITY CERTIFIED TAX RATES

2000 APPORTIONMENT OF LOCAL TAX RATES IN OAKLAND COUNTY PER \$1000 OF TAXABLE VALUE

CITY	CERTIFIED RATE
02 CITY OF AUBURN HILLS	11.8686
04 CITY OF BERKLEY	15.1846
08 CITY OF BIRMINGHAM	15.7231
12 CITY OF BLOOMFIELD HILLS	7.6400
14 CITY OF CLARKSTON VILLAGE	14.2800
16 CITY OF CLAWSON	14.3811
20 CITY OF FARMINGTON	16.0671
22 CITY OF FARMINGTON HILLS	11.0843
24 CITY OF FERNDALE	27.1553
28 CITY OF HAZEL PARK	23.3487
32 CITY OF HUNTINGTON WOODS	20.7812
36 CITY OF KEEGO HARBOR	15.1455
38 CITY OF LAKE ANGELUS	10.5000
40 CITY OF LATHRUP VILLAGE	17.9715
44 CITY OF MADISON HEIGHTS	16.9509
48 CITY OF NORTHVILLE	17.3439
50 CITY OF NOVI	10.5416
52 CITY OF OAK PARK	25.5108

CITY CERTIFIED TAX RATES

2000 APPORTIONMENT OF LOCAL TAX RATES IN OAKLAND COUNTY PER \$1000 OF TAXABLE VALUE

CITY	CERTIFIED RATE
56 CITY OF ORCHARD LAKE VILLAGE	10.1100
60 CITY OF PLEASANT RIDGE	18.9425
64 CITY OF PONTIAC	26.7836
68 CITY OF ROCHESTER	15.1374
70 CITY OF ROCHESTER HILLS	9.1498
72 CITY OF ROYAL OAK	12.2293
76 CITY OF SOUTHFIELD	16.7704
80 CITY OF SOUTH LYON	14.8312
84 CITY OF SYLVAN LAKE	10.1671
88 CITY OF TROY	9.8036
92 CITY OF WALLED LAKE	17.7281
96 CITY OF WIXOM	10.9035

### SCHOOL DISTRICT CERTIFIED TAX RATE

2000 APPORTIONMENT OF LOCAL TAX RATES IN OAKLAND COUNTY PER \$1000 OF TAXABLE VALUE

SCHOOL DISTRICT	(ALL PROPERTY) STATE EDUCATION	(NON-HOMESTEAD) SCHOOL OPERATING	(HOMESTEAD) <18 MILLS SUPPLE- MENTAL	(ALL PROPERTY) >18 MILLS SUPPLE- MENTAL	(ALL PROPERTY) LOCAL ENHANCE- MENT	(ALL PROPERTY) DEBT	HOMESTEAD TOTAL	NON- HOMESTEAD TOTAL
010-AVONDALE	6.0000	18.0000	1.8190	0.0000	0.0000	7.0000	14.8190	31.0000
015-AVONDALE TIFA A	6.0000	18.0000	1.8190	0.0000	0.0000	7.0000	14.8190	31.0000
018-AVON-INELIG-RH-LDFA	6.0000	18.0000	1.8190	0.0000	0.0000	7.0000	14.8190	31.0000
019-AVON-ELIG-RH-LDFA	6.0000	18.0000	1.8190	0.0000	0.0000	7.0000	14.8190	31.0000
020-BERKLEY	6.0000	18.0000	0.0000	0.0000	0.0000	3.8700	9.8700	27.8700
022-BERKLEY R.O.T. PP	6.0000	18.0000	0.0000	0.0000	0.0000	3.8700	9.8700	27.8700
025-BERKLEY DDA	6.0000	18.0000	0.0000	0.0000	0.0000	3.8700	9.8700	27.8700
030-BIRMINGHAM	6.0000	18.0000	11.4500	0.0000	0.0000	1.4500	18.9000	25.4500
034-BLM TWP VILLAGE SUB	6.0000	18.0000	11.4500	0.0000	0.0000	1.4500	18.9000	25.4500
040-BLOOMFIELD HILLS	6.0000	18.0000	9.7161	0.0000	0.0000	0.6700	16.3861	24.6700
050-BRANDON	6.0000	17.1043	0.0000	0.0000	0.0000	8.2400	14.2400	31.3443
054-BRANDON TIFA	6.0000	17.1043	0.0000	0.0000	0.0000	8.2400	14.2400	31.3443
055-BRANDON TIFA PP	6.0000	17.1043	0.0000	0.0000	0.0000	8.2400	14.2400	31.3443
058-GDR TO BRAN TRAN 5/26/98	6.0000	17.1043	0.0000	0.0000	0.0000	6.0500	12.0500	29.1543
059-BRANDON PP	6.0000	17.1043	0.0000	0.0000	0.0000	8.2400	14.2400	31.3443
060-CLARENCEVILLE	6.0000	18.0000	0.9646	0.0000	0.0000	3.7749	10.7395	27.7749
070-CLARKSTON	6.0000	17.6772	0.0000	0.0000	0.0000	7.0000	13.0000	30.6772
071-CLARKSTON TRANSFER	6.0000	17.6772	0.0000	0.0000	0.0000	7.0000	13.0000	30.6772
075-CLARKSTON PP	6.0000	17.6772	0.0000	0.0000	0.0000	7.0000	13.0000	30.6772

**SCHOOL DISTRICT CERTIFIED TAX RATE**

2000 APPORTIONMENT OF LOCAL TAX RATES IN OAKLAND COUNTY PER \$1000 OF TAXABLE VALUE

SCHOOL DISTRICT	(ALL PROPERTY) STATE EDUCATION	(NON-HOMESTEAD) SCHOOL OPERATING	(HOMESTEAD) <18 MILLS SUPPLE- MENTAL	(ALL PROPERTY) >18 MILLS SUPPLE- MENTAL	(ALL PROPERTY) LOCAL ENHANCE- MENT	(ALL PROPERTY) DEBT	HOMESTEAD TOTAL	NON- HOMESTEAD TOTAL
080-CLAWSON	6.0000	17.1522	0.0000	0.0000	0.0000	9.8728	15.8728	33.0250
089-CLAWSON DDA	6.0000	17.1522	0.0000	0.0000	0.0000	9.8728	15.8728	33.0250
100-FARMINGTON	6.0000	18.0000	11.2614	0.0000	0.0000	2.0000	19.2614	26.0000
101-FARMINGTON DDA	6.0000	18.0000	11.2614	0.0000	0.0000	2.0000	19.2614	26.0000
110-FERNDALE	6.0000	18.0000	0.0000	0.0000	0.0000	7.0000	13.0000	31.0000
111-FERNDALE R.O.T. PP	6.0000	18.0000	0.0000	0.0000	0.0000	7.0000	13.0000	31.0000
112-FERNDALE TIFA	6.0000	18.0000	0.0000	0.0000	0.0000	7.0000	13.0000	31.0000
113-FERNDALE-24-DDA	6.0000	18.0000	0.0000	0.0000	0.0000	7.0000	13.0000	31.0000
117-FERNDALE 60 DDA	6.0000	18.0000	0.0000	0.0000	0.0000	7.0000	13.0000	31.0000
118-FERNDALE PP DDA	6.0000	18.0000	0.0000	0.0000	0.0000	7.0000	13.0000	31.0000
119-FERNDALE DDA	6.0000	18.0000	0.0000	0.0000	0.0000	7.0000	13.0000	31.0000
120-HAZEL PARK	6.0000	17.9352	0.0000	0.0000	0.0000	3.0000	9.0000	26.9352
125-HAZEL PARK DDA 3A	6.0000	17.9352	0.0000	0.0000	0.0000	3.0000	9.0000	26.9352
126-HAZEL PARK DDA-4	6.0000	17.9352	0.0000	0.0000	0.0000	3.0000	9.0000	26.9352
127-HAZEL PARK DDA 2	6.0000	17.9352	0.0000	0.0000	0.0000	3.0000	9.0000	26.9352
128-HAZEL PARK DDA 3	6.0000	17.9352	0.0000	0.0000	0.0000	3.0000	9.0000	26.9352
129-HAZEL PARK DDA	6.0000	17.9352	0.0000	0.0000	0.0000	3.0000	9.0000	26.9352
130-HOLLY	6.0000	18.0000	0.0000	0.0000	0.0000	7.0000	13.0000	31.0000

**SCHOOL DISTRICT CERTIFIED TAX RATE**

**2000 APPORTIONMENT OF LOCAL TAX RATES IN OAKLAND COUNTY PER \$1000 OF TAXABLE VALUE**

SCHOOL DISTRICT	(ALL PROPERTY) STATE EDUCATION	(NON-HOMESTEAD) SCHOOL OPERATING	(HOMESTEAD) <18 MILLS SUPPLE- MENTAL	(ALL PROPERTY) >18 MILLS SUPPLE- MENTAL	(ALL PROPERTY) LOCAL ENHANCE- MENT	(ALL PROPERTY) DEBT	HOMESTEAD TOTAL	NON- HOMESTEAD TOTAL
140-HURON VALLEY	6.0000	17.8956	0.0000	0.0000	0.0000	5.9773	11.9773	29.8729
141-MILFORD VILLAGE DDA	6.0000	17.8956	0.0000	0.0000	0.0000	5.9773	11.9773	29.8729
142-HURON VALLEY PP	6.0000	17.8956	0.0000	0.0000	0.0000	5.9773	11.9773	29.8729
143-HURON VALLEY ACT 189	6.0000	17.8956	0.0000	0.0000	0.0000	5.9773	11.9773	29.8729
150-LAKE ORION	6.0000	17.9984	0.0000	0.0000	0.0000	7.4910	13.4910	31.4894
152-LAKE ORION TRANSFER	6.0000	17.9984	0.0000	0.0000	0.0000	10.2910	16.2910	34.2894
160-LAMPHERE	6.0000	18.0000	15.0000	0.0000	0.0000	3.4000	24.4000	27.4000
169-LAMPHERE-44-TIFA	6.0000	18.0000	15.0000	0.0000	0.0000	3.4000	24.4000	27.4000
170-MADISON	6.0000	18.0000	0.0000	0.0000	0.0000	7.6000	13.6000	31.6000
172-MADISON DDA	6.0000	18.0000	0.0000	0.0000	0.0000	7.6000	13.6000	31.6000
180-NOVI	6.0000	17.6663	4.7582	0.0000	0.0000	5.6000	16.3582	29.2663
182-NOVI TRANSFER	6.0000	17.6663	4.7582	0.0000	0.0000	5.6000	16.3582	29.2663
183-NOVI TRANSFER	6.0000	17.6663	4.7582	0.0000	0.0000	5.6000	16.3582	29.2663
184-S LYON TO NOVI TRANS 97	6.0000	17.6663	4.7582	0.0000	0.0000	5.7700	16.5282	29.4363
190-OAK PARK	6.0000	17.9783	0.0000	0.0000	0.0000	8.2792	14.2792	32.2575
191-OAK PARK R.O.T. PP	6.0000	17.9783	0.0000	0.0000	0.0000	8.2792	14.2792	32.2575
192-OAK PARK TIFA/DDA	6.0000	17.9783	0.0000	0.0000	0.0000	8.2792	14.2792	32.2575
198-OAK PARK DDA PP	6.0000	17.9783	0.0000	0.0000	0.0000	8.2792	14.2792	32.2575
199-OAK PARK DDA	6.0000	17.9783	0.0000	0.0000	0.0000	8.2792	14.2792	32.2575

**SCHOOL DISTRICT CERTIFIED TAX RATE**

**2000 APPORTIONMENT OF LOCAL TAX RATES IN OAKLAND COUNTY PER \$1000 OF TAXABLE VALUE**

SCHOOL DISTRICT	(ALL PROPERTY) STATE EDUCATION	(NON-HOMESTEAD) SCHOOL OPERATING	(HOMESTEAD) <18 MILLS SUPPLE- MENTAL	(ALL PROPERTY) >18 MILLS SUPPLE- MENTAL	(ALL PROPERTY) LOCAL ENHANCE- MENT	(ALL PROPERTY) DEBT	HOMESTEAD TOTAL	NON- HOMESTEAD TOTAL
200-OXFORD	6.0000	17.1165	0.0000	0.0000	0.0000	7.0000	13.0000	30.1165
202-OXFORD TRANSFER	6.0000	17.1165	0.0000	0.0000	0.0000	7.6000	13.6000	30.7165
203-OXFORD TRANSFER	6.0000	17.1165	0.0000	0.0000	0.0000	7.0000	13.0000	30.1165
204-OXFORD TRANSFER	6.0000	17.1165	0.0000	0.0000	0.0000	7.0000	13.0000	30.1165
205-OXFORD VILLAGE DDA	6.0000	17.1165	0.0000	0.0000	0.0000	7.0000	13.0000	30.1165
209-OXFORD PP	6.0000	17.1165	0.0000	0.0000	0.0000	7.0000	13.0000	30.1165
210-PONTIAC	6.0000	17.8758	0.0000	0.0000	0.0000	2.8000	8.8000	26.6758
211-PONTIAC PP-84	6.0000	17.8758	0.0000	0.0000	0.0000	2.8000	8.8000	26.6758
212-PONTIAC TIFA 3	6.0000	17.8758	0.0000	0.0000	0.0000	2.8000	8.8000	26.6758
213-PONTIAC DDA 1	6.0000	17.8758	0.0000	0.0000	0.0000	2.8000	8.8000	26.6758
214-PONTIAC DDA 2	6.0000	17.8758	0.0000	0.0000	0.0000	2.8000	8.8000	26.6758
215-PONTIAC TIFA B	6.0000	17.8758	0.0000	0.0000	0.0000	2.8000	8.8000	26.6758
216-PONTIAC TIFA A	6.0000	17.8758	0.0000	0.0000	0.0000	2.8000	8.8000	26.6758
217-PONTIAC TIFA D	6.0000	17.8758	0.0000	0.0000	0.0000	2.8000	8.8000	26.6758
218-PONTIAC LDFA	6.0000	17.8758	0.0000	0.0000	0.0000	2.8000	8.8000	26.6758
219-PONTIAC TIFA 4	6.0000	17.8758	0.0000	0.0000	0.0000	2.8000	8.8000	26.6758
220-ROCHESTER	6.0000	17.6508	0.0000	0.0000	0.0000	5.6000	11.6000	29.2508
222-ROCH-ELIGIBLE-LDFA	6.0000	17.6508	0.0000	0.0000	0.0000	5.6000	11.6000	29.2508
223-ROCH-INELIGIBLE-LDFA	6.0000	17.6508	0.0000	0.0000	0.0000	5.6000	11.6000	29.2508
227-ROCHESTER DDA-3	6.0000	17.6508	0.0000	0.0000	0.0000	5.6000	11.6000	29.2508
228-ROCHESTER DDA-2	6.0000	17.6508	0.0000	0.0000	0.0000	5.6000	11.6000	29.2508
229-ROCHESTER DDA-1	6.0000	17.6508	0.0000	0.0000	0.0000	5.6000	11.6000	29.2508

**SCHOOL DISTRICT CERTIFIED TAX RATE**

2000 APPORTIONMENT OF LOCAL TAX RATES IN OAKLAND COUNTY PER \$1000 OF TAXABLE VALUE

SCHOOL DISTRICT	(ALL PROPERTY)	(NON-HOMESTEAD)	(HOMESTEAD)	(ALL PROPERTY)	(ALL PROPERTY)	(ALL PROPERTY)	HOMESTEAD TOTAL	NON- HOMESTEAD TOTAL
	STATE EDUCATION	SCHOOL OPERATING	<18 MILLS SUPPLE- MENTAL	>18 MILLS SUPPLE- MENTAL	LOCAL ENHANCE- MENT	DEBT		
230-ROYAL OAK	6.0000	18.0000	5.1700	0.0000	0.0000	3.6000	14.7700	27.6000
231-ROYAL OAK DDA	6.0000	18.0000	5.1700	0.0000	0.0000	3.6000	14.7700	27.6000
232-ROYAL OAK BART LAF	6.0000	18.0000	5.1700	0.0000	0.0000	3.6000	14.7700	27.6000
234-ROYAL OAK I-696 DEV	6.0000	18.0000	5.1700	0.0000	0.0000	3.6000	14.7700	27.6000
236-ROYAL OAK DDA/44	6.0000	18.0000	5.1700	0.0000	0.0000	3.6000	14.7700	27.6000
240-SOUTH LYON	6.0000	17.8524	0.0000	0.0000	0.0000	8.0000	14.0000	31.8524
241-SOUTH LYON PP	6.0000	17.8524	0.0000	0.0000	0.0000	8.0000	14.0000	31.8524
250-SOUTHFIELD	6.0000	18.0000	18.0000	2.7971	0.0000	2.0000	28.7971	28.7971
251-SOUTHFIELD LDFA A	6.0000	18.0000	18.0000	2.7971	0.0000	2.0000	28.7971	28.7971
252-SOUTHFIELD TIFA-2	6.0000	18.0000	18.0000	2.7971	0.0000	2.0000	28.7971	28.7971
253-SOUTHFIELD LDFA-1	6.0000	18.0000	18.0000	2.7971	0.0000	2.0000	28.7971	28.7971
254-SOUTHFIELD LDFA-2	6.0000	18.0000	18.0000	2.7971	0.0000	2.0000	28.7971	28.7971
255-SOUTHFIELD DDA	6.0000	18.0000	18.0000	2.7971	0.0000	2.0000	28.7971	28.7971
256-SOUTHFIELD TIFA/DDA	6.0000	18.0000	18.0000	2.7971	0.0000	2.0000	28.7971	28.7971
257-SOUTHFIELD LDFA 3	6.0000	18.0000	18.0000	2.7971	0.0000	2.0000	28.7971	28.7971
258-STHFLD-LATHRUP DDA	6.0000	18.0000	18.0000	2.7971	0.0000	2.0000	28.7971	28.7971
259-SOUTHFLD/40/DDA	6.0000	18.0000	18.0000	2.7971	0.0000	2.0000	28.7971	28.7971
260-TROY	6.0000	18.0000	7.3876	0.0000	0.0000	3.3155	16.7031	27.3155
262-TROY TRANSFER	6.0000	18.0000	7.3876	0.0000	0.0000	3.3573	16.7449	27.3573
265-TROY DDA	6.0000	18.0000	7.3876	0.0000	0.0000	3.3155	16.7031	27.3155



SCHOOL DISTRICT CERTIFIED TAX RATE

2000 APPORTIONMENT OF LOCAL TAX RATES IN OAKLAND COUNTY PER \$1000 OF TAXABLE VALUE

SCHOOL DISTRICT	(ALL PROPERTY) STATE EDUCATION	(NON-HOMESTEAD) SCHOOL OPERATING	(HOMESTEAD) <18 MILLS SUPPLE- MENTAL	(ALL PROPERTY) >18 MILLS SUPPLE- MENTAL	(ALL PROPERTY) LOCAL ENHANCE- MENT	(ALL PROPERTY) DEBT	HOMESTEAD TOTAL	NON- HOMESTEAD TOTAL
270-WALLED LAKE	6.0000	18.0000	2.9982	0.0000	0.0000	5.1000	14.0982	29.1000
275-WALLED LAKE TRANSFER	6.0000	18.0000	2.9982	0.0000	0.0000	6.3100	15.3082	30.3100
277-WALLED LAKE 96 LDFA	6.0000	18.0000	2.9982	0.0000	0.0000	5.1000	14.0982	29.1000
278-WALLED LAKE TIFA	6.0000	18.0000	2.9982	0.0000	0.0000	5.1000	14.0982	29.1000
279-WALLED LAKE TIFA-B	6.0000	18.0000	2.9982	0.0000	0.0000	5.1000	14.0982	29.1000
280-WATERFORD	6.0000	18.0000	0.0000	0.0000	0.0000	3.1700	9.1700	27.1700
290-WEST BLOOMFIELD	6.0000	17.9766	4.2711	0.0000	0.0000	5.4900	15.7611	29.4666
292-WEST BLOOMFIELD 84 PP	6.0000	17.9766	4.2711	0.0000	0.0000	5.4900	15.7611	29.4666
299-KEEGO HARBOR TIFA	6.0000	17.9766	4.2711	0.0000	0.0000	5.4900	15.7611	29.4666
400-ALMONT	6.0000	17.3303	0.0000	0.0000	0.0000	8.4500	14.4500	31.7803
401-ALMONT TRANSFER	6.0000	17.3303	0.0000	0.0000	0.0000	8.4500	14.4500	31.7803
450-FENTON	6.0000	17.7912	0.0000	0.0000	0.0000	7.6279	13.6279	31.4191
500-GOODRICH	6.0000	18.0000	0.0000	0.0000	0.0000	7.7500	13.7500	31.7500
550-GRAND BLANC	6.0000	17.8311	0.0000	0.0000	0.0000	2.8000	8.8000	26.6311
650-NORTHVILLE	6.0000	18.0000	0.0000	0.0000	0.0000	5.0000	11.0000	29.0000
651-NORTHVILLE TRANSFER	6.0000	18.0000	0.0000	0.0000	0.0000	5.3500	11.3500	29.3500
700-ROMEO	6.0000	18.0000	0.0000	0.0000	0.0000	6.7951	12.7951	30.7951
702-ROMEO TRANSFER	6.0000	18.0000	0.0000	0.0000	0.0000	6.3928	12.3928	30.3928
750-WARREN	6.0000	18.0000	7.8163	0.0000	0.0000	1.0000	14.8163	25.0000

INTERMEDIATE SCHOOL DISTRICT/COMMUNITY COLLEGE/OAKLAND COUNTY GENERAL OPERATING/  
 OAKLAND COUNTY PARKS AND RECREATION/HURON CLINTON METROPOLITAN AUTHORITY  
**CERTIFIED TAX RATES**

2000 APPORTIONMENT OF LOCAL TAX RATES IN OAKLAND COUNTY PER \$1000 OF TAXABLE VALUE

	ALLOCATED	VOTED	DEBT OR AUTHORITY	TOTAL
--	-----------	-------	-------------------	-------

INTERMEDIATE SCHOOLS

GENESSEE INTERMEDIATE SCHOOLS	0.1662	3.4232	0.0000	3.5894
LAPEER INTERMEDIATE SCHOOLS	0.1990	2.9199	0.0000	3.1189
MACOMB INTERMEDIATE SCHOOLS	0.2085	1.8125	0.0000	2.0210
OAKLAND INTERMEDIATE SCHOOLS	0.2074	1.8678	0.0000	2.0752
WAYNE INTERMEDIATE SCHOOLS	0.0974	1.8815	0.0000	1.9789

COMMUNITY COLLEGES

MOTT COMMUNITY COLLEGE	0.0000	1.3694	0.5000	1.8694
OAKLAND COMMUNITY COLLEGE	0.0000	1.6109	0.0000	1.6109
SCHOOLCRAFT COLLEGE	0.0000	1.8310	0.0000	1.8310

OAKLAND COUNTY GENERAL OPERATING

	4.1900	0.0000	0.0000	4.1900
--	--------	--------	--------	--------

OAKLAND COUNTY PARKS AND RECREATION

	0.0000	0.2376	0.0000	0.2376
--	--------	--------	--------	--------

HURON CLINTON METRO AUTHORITY

	0.0000	0.0000	0.2202	0.2202
--	--------	--------	--------	--------

\* COMBINED-CONSISTS OF:

COUNTY OPERATING	4.1900
PARKS AND RECREATION	0.2376
HURON CLINTON AUTHORITY	0.2202

TOTAL	4.6478
-------	--------

OAKLAND COUNTY PUBLIC TRANSPORTATION AUTHORITY  
 CERTIFIED TAX RATES

2000 APPORTIONMENT OF LOCAL TAX RATES IN OAKLAND COUNTY PER \$1000 OF TAXABLE VALUE

CITY, VILLAGE OR TOWNSHIP	ALLOCATED	VOTED	DEBT OR AUTHORITY	TOTAL
CHARTER TOWNSHIP OF BLOOMFIELD		0.3236		0.3236
CHARTER TOWNSHIP OF ROYAL OAK		0.3236		0.3236
CHARTER TOWNSHIP OF WEST BLOOMFIELD		0.3236		0.3236
CITY OF AUBURN HILLS		0.3236		0.3236
CITY OF BERKLEY		0.3236		0.3236
CITY OF BIRMINGHAM		0.3236		0.3236
CITY OF CLAWSON		0.3236		0.3236
CITY OF FARMINGTON		0.3236		0.3236
CITY OF FARMINGTON HILLS		0.3236		0.3236
CITY OF FERNDALE		0.3236		0.3236
CITY OF HAZEL PARK		0.3236		0.3236
CITY OF HUNTINGTON WOODS		0.3236		0.3236
CITY OF MADISON HEIGHTS		0.3236		0.3236
CITY OF OAK PARK		0.3236		0.3236
CITY OF PLEASANT RIDGE		0.3236		0.3236
CITY OF PONTIAC		0.3236		0.3236
CITY OF ROYAL OAK		0.3236		0.3236
CITY OF SOUTHFIELD		0.3236		0.3236
CITY OF TROY		0.3236		0.3236
VILLAGE OF BINGHAM FARMS		0.3236		0.3236
VILLAGE OF FRANKLIN		0.3236		0.3236
VILLAGE OF BEVERLY HILLS		0.3236		0.3236