



OAKLAND COUNTY PARKS AND RECREATION DEPARTMENT

2800 Watkins Lake Road, Waterford, Michigan 48328 | 248-858-0906 | <http://www.oakgov.com/parksrec>

OAKLAND COUNTY PARKS AND RECREATION COMMISSION

Pecky D. Lewis, Jr., Chairman
Richard Skarritt, Vice Chairman
J. David VanderVeen, Secretary
Hugh D. Crawford
Vincent Gregory
Eileen T. Kowall
John P. McCulloch
Charles Palmer
John P. Richards
Shelley G. Taub

OAKLAND COUNTY PARKS AND RECREATION ADMINISTRATIVE MANAGEMENT TEAM

Daniel J. Stencil, Executive Officer
Susan M. Wells, Operations Administrator
Frank J. Trionfi, Services Administrator
Joseph P. Figa, Jr., Chief of Design and Development
Michael Thibodeau, Chief of Golf Operations
Clyde Herb, Chief of Park Operations
James Dunleavy, Chief of Recreation
Janet Pung, Marketing and Communications Officer

PREPARED BY

JJR, LLC | 110 Miller Avenue, Ann Arbor, Michigan 48104 | 734.662.4449

TABLE OF CONTENTS

I	INTRODUCTION.....	1
A	PURPOSE OF THE MASTER PLAN.....	3
B	DESIGN PROCESS	3
II	DATA ANALYSIS	5
A	PARK HISTORY AND EXISTING SITE LAND USE	5
B	TOWNSHIP PLANNING AND ADJACENT LAND USE.....	7
C	REGIONAL CONTEXT	8
D	NATURAL FEATURES.....	9
E	FRAMEWORK PLAN.....	14
III	MASTER PLAN	19
A	PUBLIC INPUT	19
B	VISION STATEMENT	23
C	GOALS AND OBJECTIVES.....	23
D	DESIGN ALTERNATIVES.....	26
E	FINAL DESIGN	30
IV	IMPLEMENTATION.....	47
	PROJECT COSTS AND PRIORITIES	47
	FUNDING SOURCES.....	47
	ITEMIZED CONSTRUCTION COST ESTIMATE	48

APPENDICES

A	POTENTIAL ECOLOGICAL CONNECTIVITY	APP-1
B	ECOREGIONS OF LOWER MICHIGAN	APP-3
C	SITE SOIL SERIES DESCRIPTIONS	APP-5
D	SITE SUMMARIES AND MANAGEMENT RECOMMENDATIONS	APP-9
E	PLANT SPECIES OBSERVED AT ROSE OAKS COUNTY PARK	APP-29
F	PUBLIC FORUM AND NEIGHBORHOOD SURVEY VOTING	APP-43
G	2007 OAKLAND COUNTY PARKS AND RECREATION MASTER PLAN COUNTY-WIDE PUBLIC INTEREST SURVEY RESULTS	APP-47
H	SYNOPSIS OF 30-DAY PUBLIC COMMENT PERIOD – APRIL 2007	APP-55

MISSION STATEMENT

To provide all residents of Oakland County with recreational, leisure and learning experiences; parks, open spaces, facilities; and professional staff and fiscal management, resulting in a comprehensive county park system that enhances the residents' quality of life.

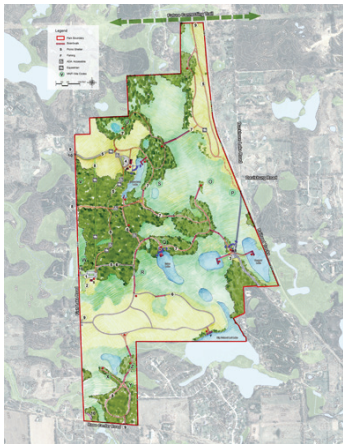
Section I **Introduction**

A Purpose of the Master Plan

B Design Process

I INTRODUCTION

In 41 years, the Oakland County Parks system has grown to more than 6,000 acres of natural landscapes and outdoor recreation for Oakland County residents. Twelve Oakland County Parks offer a wide variety of year-round recreation opportunities ranging from camping, hiking, swimming, boating, golfing and picnicking to cross-country skiing, ice fishing and The Fridge, Michigan's only refrigerated toboggan run.



Rose Oaks County Park was acquired by the Oakland County Parks system in 1996. Located in the northwest corner of Oakland County in Rose Township, the park includes the headwaters of Buckhorn Creek (tributary to the Shiawassee River) and its continuous lakes and ponds. (See figure 1.)

The park's 623 acres of rolling hills, extensive wetlands, ponds and lakes complement the nearby county parks of Groveland Oaks and Springfield Oaks. Also within this vicinity are extensive Michigan State Park lands including Seven Lakes, Holly Recreation Area, Pontiac Lake Recreation Area and Highland Lake Recreation Area. Nearby communities include Holly (3 miles north), Fenton (5 miles northwest) and Milford (9 miles south). (See figure 2.)

Major nearby transportation corridors include US-23 (6 miles west) and I-75 (7 miles east). (See figure 3.)

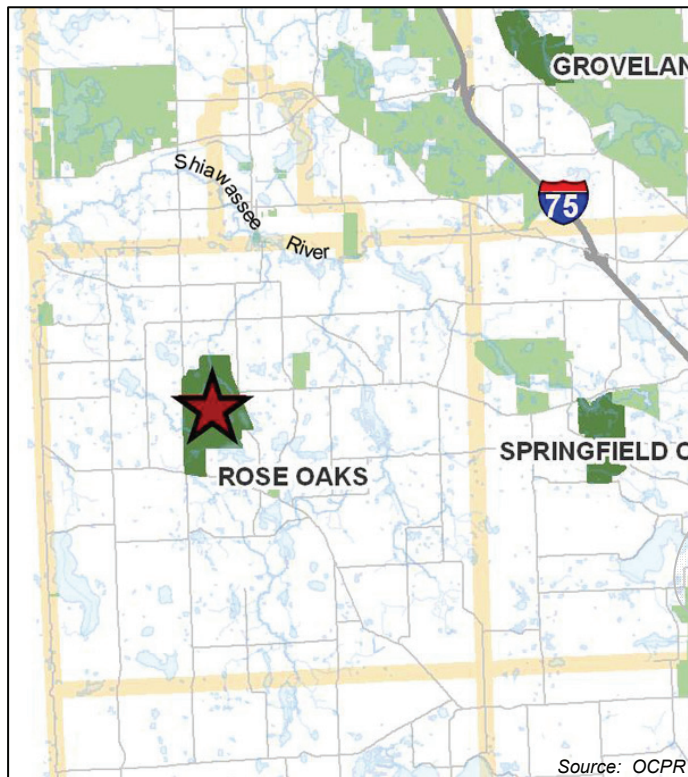


Figure 1 – Rose Township

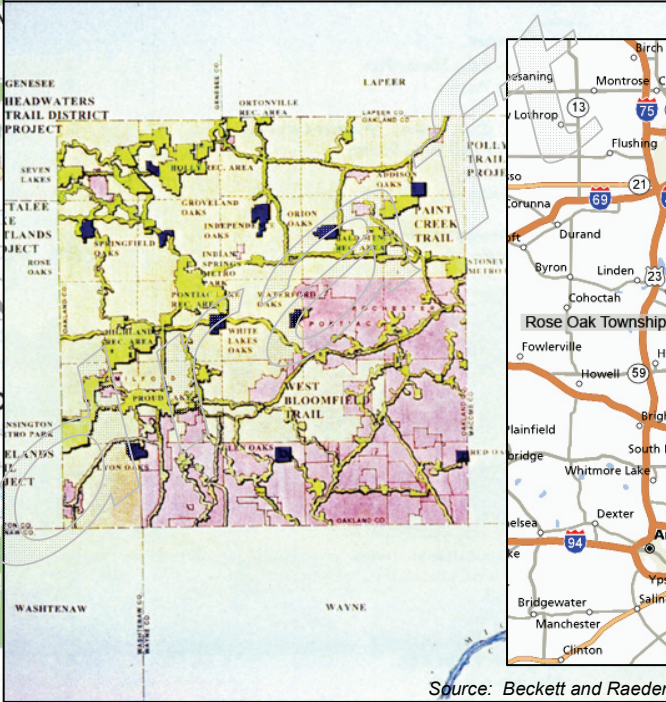


Figure 2 – Recreational Context

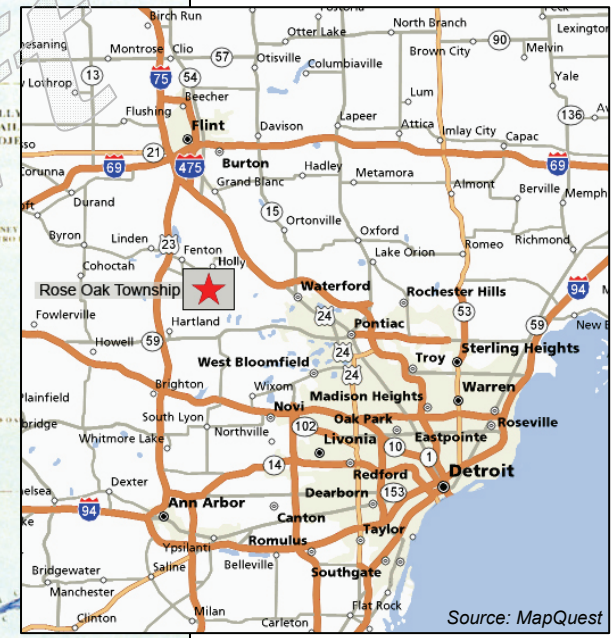


Figure 3 – Regional Context

As with all county-run parks, Rose Oaks County Park is considered a regional recreational facility that serves a broader area than community parks, and focuses on meeting the recreational needs of the region as well as preserving unique landscapes and open spaces.

The master plan balances preservation, environmental stewardship and compatible recreational activities with the overall goal of providing a wide variety of year-round experiences for county residents.

The design process is collaborative with many stakeholders.

Data analysis includes an evaluation of the site's natural and physical characteristics.

A PURPOSE OF THE MASTER PLAN

The purpose of the Rose Oaks County Park Recreation Master Plan (Master Plan) is to propose park improvements that balance the preservation and management of the park's natural features with recreational experiences that are accessible to and enjoyed by all Oakland County residents.

B DESIGN PROCESS

The design process was a collaborative effort between the Oakland County Parks and Recreation Commission, Rose Township officials, Oakland County Parks and Recreation (OCPR) staff, JJR design professionals and members of the general public. Park staff played an instrumental role during all phases of the design process; they provided timely decisions and direction to the design team, and technical support throughout the process.

Development of the Master Plan consisted of four distinct phases: data collection and analysis, public input, design alternatives, and final design. The data collection phase consisted of gathering relevant information from public and private sources. A significant portion of data was supplied by the Oakland County Planning and Economic Development Services and OCPR. Other relevant data included previous park master plans, the *Rose Township Land Use Master Plan* and the Michigan Natural Features Inventory (MNFI) *Natural Features Inventory and Management Recommendations* (ecological survey).

After collection, the data was organized, interpreted and evaluated based on its importance to the park's existing and future programming. Significant features catalogued under this phase included the natural and physical characteristics of the site. The natural characteristics consist of prominent landforms, vistas, water resources and plant communities. The physical characteristics include the arrangement of recreation facilities on the site and their relationships to one another, focusing on a road system, active and passive recreation opportunities, park use and the condition of the facilities.



Public input ensured that the planning process considered the needs of the park and its users.



The Master Plan will be used to guide potential recreation and habitat improvements at the park.

Public input was obtained in several stages. Prior to the development of the Concept Design, the public provided valuable feedback about its future vision of the park during a public forum. Two information stations and a survey were provided for forum participants to identify and vote on a variety of current and/or future recreational opportunities at the park. Following the public forum, OCPR sent out a neighborhood mailer containing the survey. Goals and objectives were then developed that helped guide the creation of the design alternatives and Concept Design. The Concept Design was then presented to the Oakland County Parks and Recreation Commission for review and approval. A second presentation of the Concept Design was made to the Rose Township Board of Trustees at a regularly scheduled public meeting, which contributed heavily to its validation. A draft Master Plan was then completed, and a 30-day public review period occurred with copies of the draft plan available online and at the OCPR office. Lastly, the final Master Plan was presented at a regularly scheduled public meeting of the Oakland County Parks and Recreation Commission prior to its adoption.

The final Master Plan phase included the development of the Final Design, suggested phasing strategy and budget estimate. Refinements were made to the Master Plan based on input from Oakland County staff, and the end product is presented in the Master Plan section of this report.