

ADDISON OAKS PLANNING MAP SET

UPDATED: 4/21/2016 10:57:48 AM

CONTENTS

Location Map3

Surface Geology.....4

Soils.....5

Ten-Foot Contours.....6

Hydrography7

Presettlement Vegetation8

MNFI Potential Natural Area9

Oakland County Subwatersheds.....10

Green Infrastructure.....11

2015 Land Use12

1940 Aerial.....13

1963 Aerial.....14

1974 Aerial.....15

1980 Aerial.....16

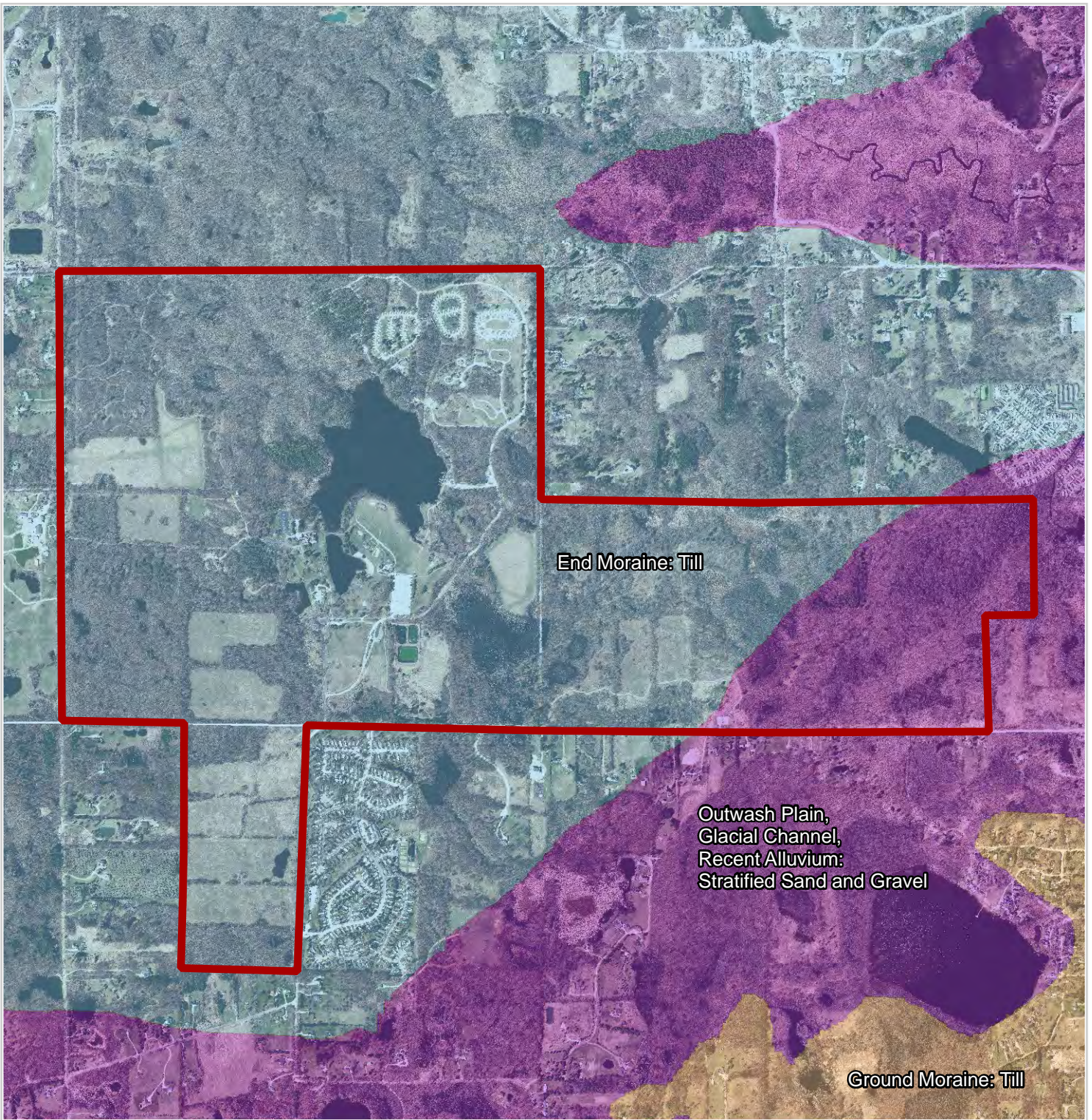
1990 Aerial.....17

2000 Aerial.....18

2012 Aerial.....19

2015 Aerial.....20





Esri Dominant Tapestry Map21

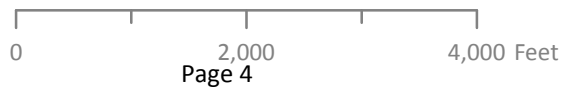
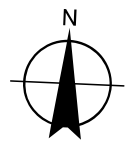


Oakland County Parks and Recreation

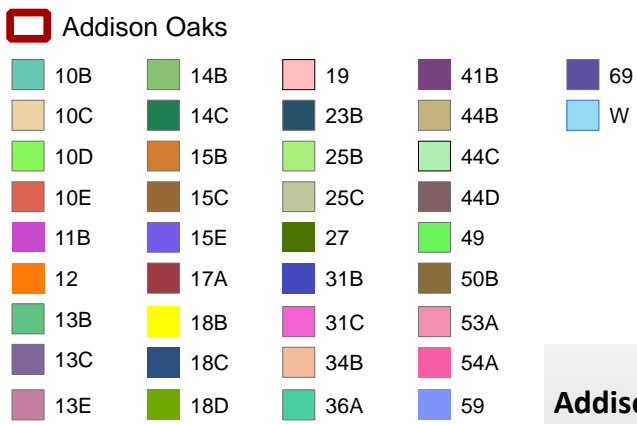
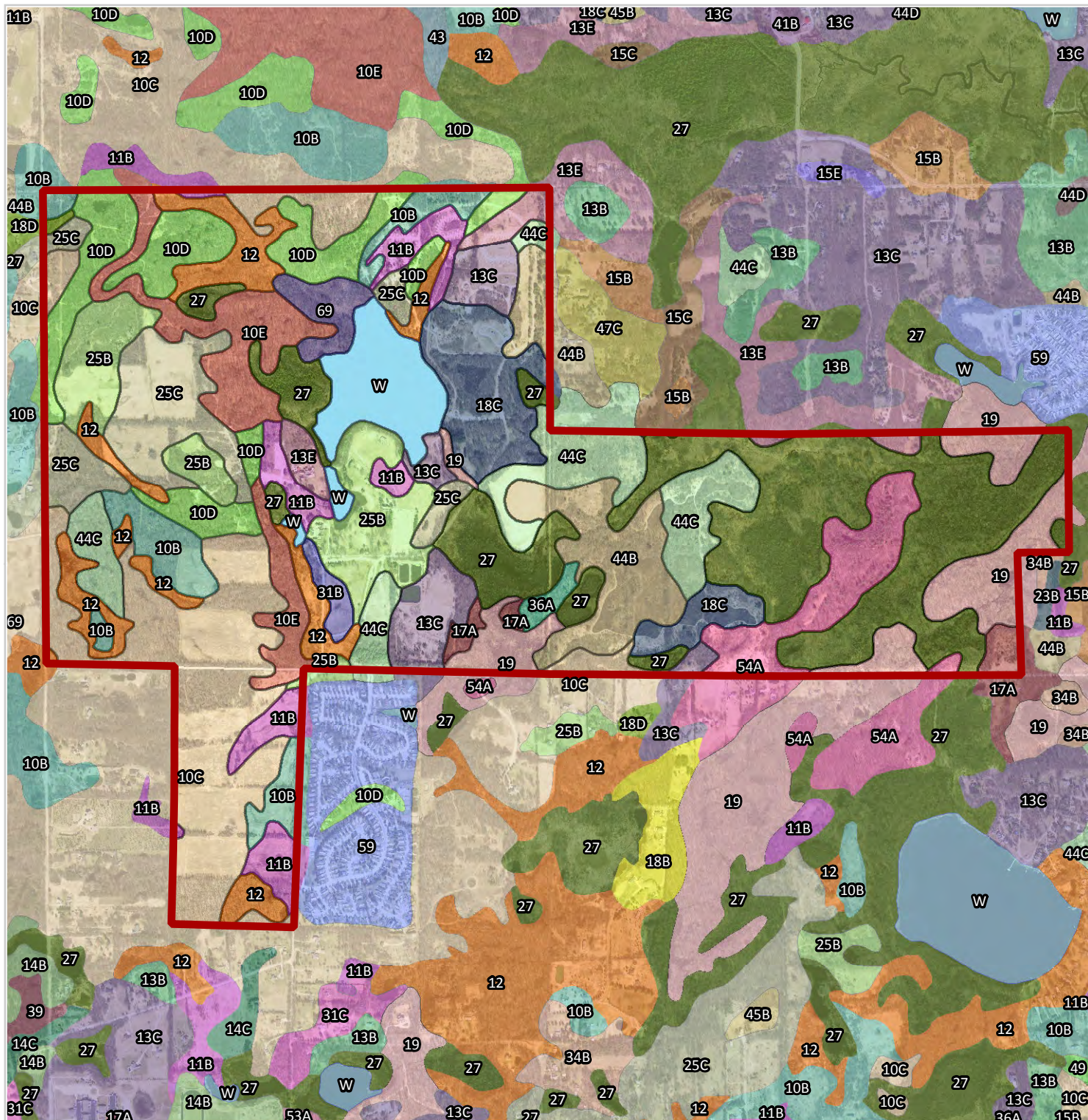
2800 Watkins Lake Road
Waterford, MI
248-858-0906

www.DestinationOakland.com

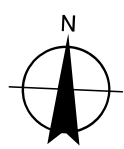
-  Addison Oaks Park Boundary
-  End Moraine: Till
-  Outwash Plain, Glacial Channel,
Recent Alluvium: Stratified Sand & Gravel
-  Ground Moraine: Till



**Addison Oaks
County Park
Surface Geology**

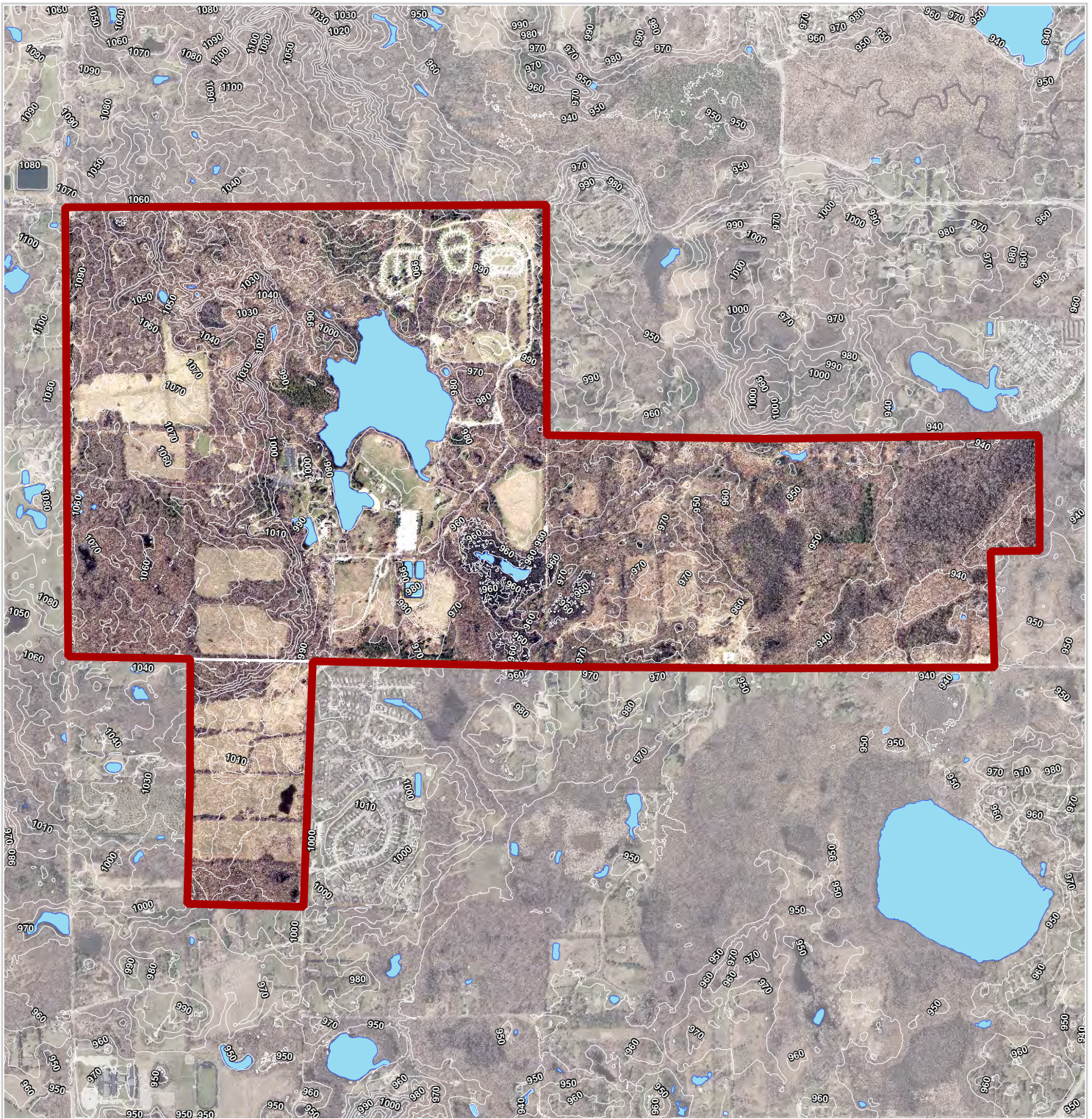


OAKLAND COUNTY PARKS
 Oakland County Parks and Recreation
 2800 Watkins Lake Road
 Waterford, MI
 248-858-0906
www.DestinationOakland.com



**Addison Oaks County Park
Soils**






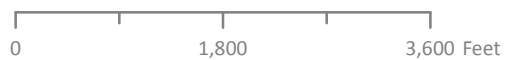
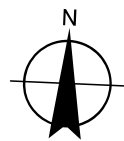


Oakland County Parks and Recreation

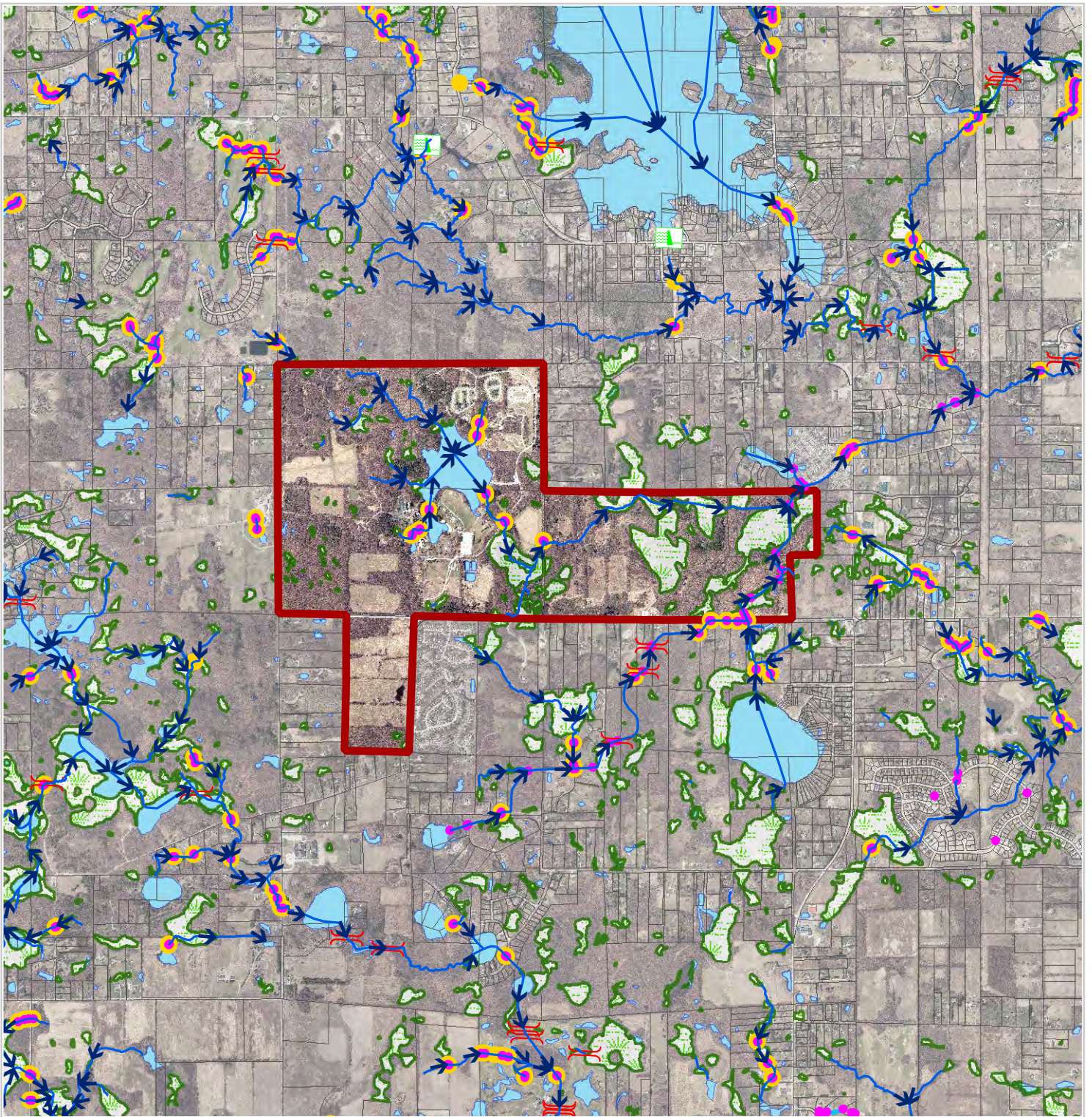
2800 Watkins Lake Road
Waterford, MI
248-858-0906









www.DestinationOakland.com

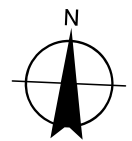
-  Addison Oaks Park Boundary
-  Ten Foot Contour
-  Lake/Pond



**Addison Oaks County Park
Ten Foot Contours**



-  Addison Oaks Park Boundary
-  Swamp/Marsh
-  Water Course with Flow Direction
-  Bridge
-  Dam
-  Drain Network Structure
-  Culvert
-  Lake/Pond



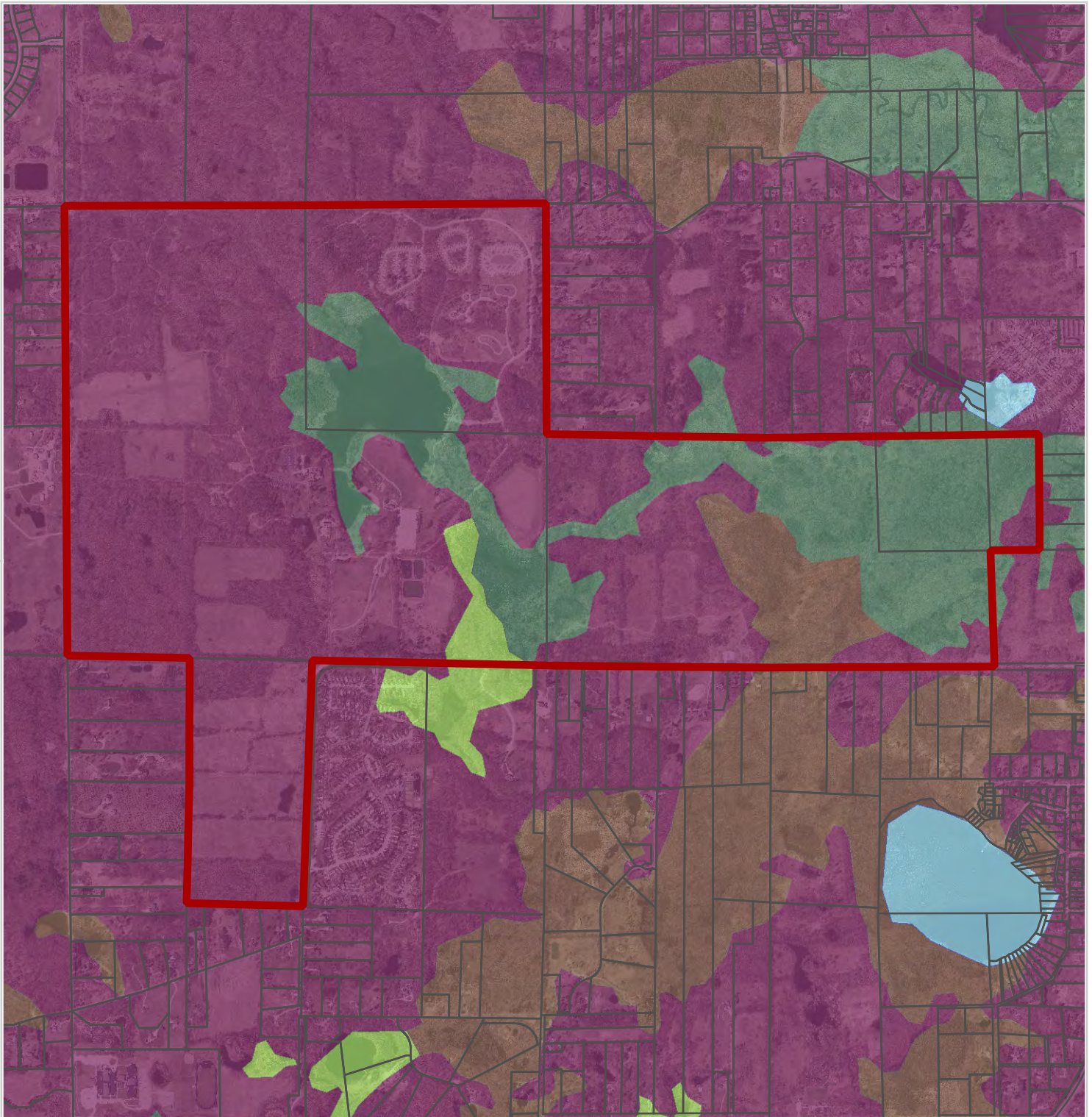
Oakland County Parks and Recreation

2800 Watkins Lake Road
Waterford, MI
248-858-0906

www.DestinationOakland.com



Addison Oaks County Park Hydrography








Oakland County Parks and Recreation

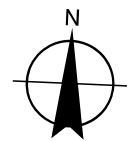
2800 Watkins Lake Road
Waterford, MI
248-858-0906

www.DestinationOakland.com

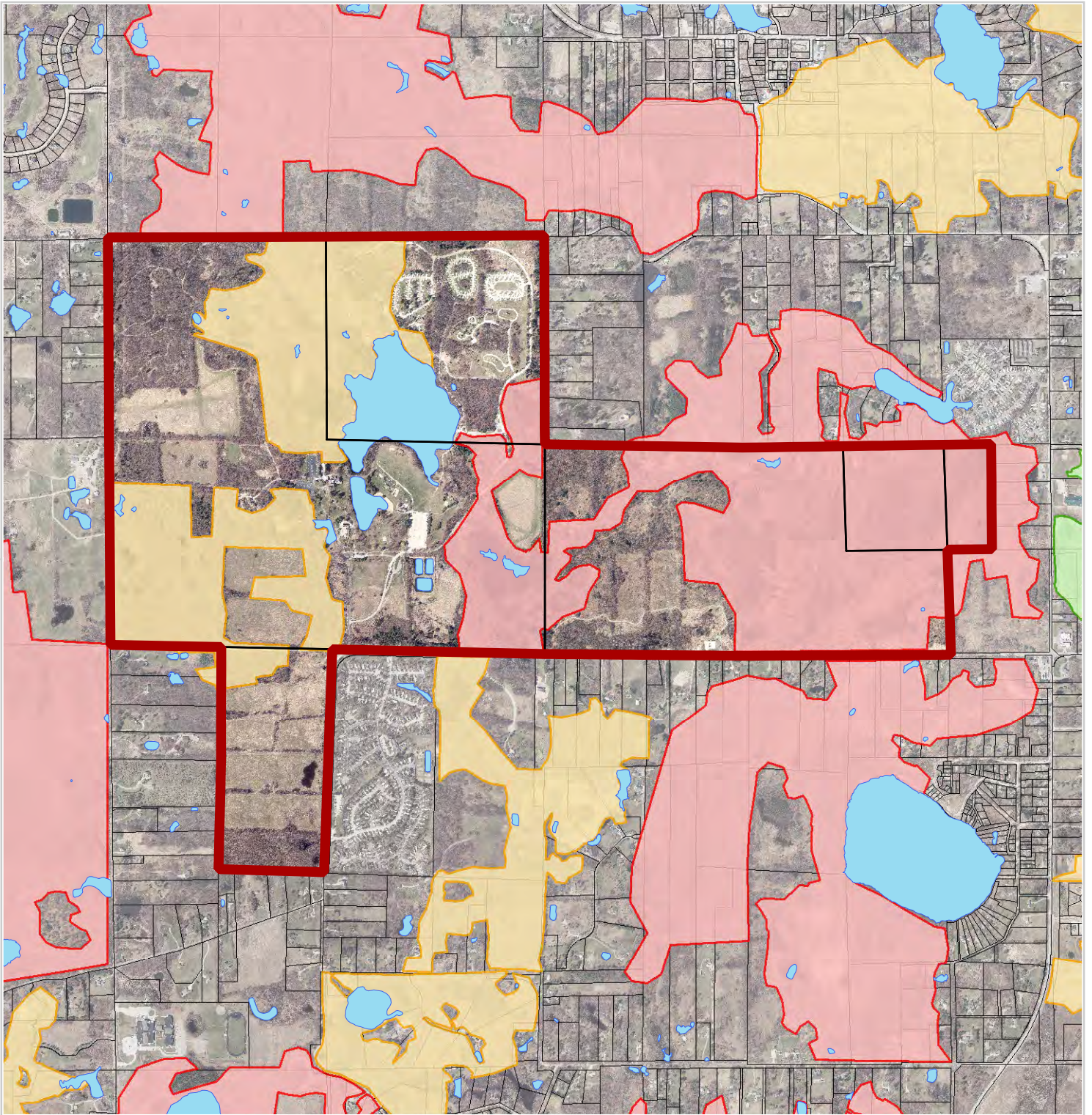
 **Addison Oaks Park**

Presettlement Vegetation Cover Type

-  BLACK OAK BARREN
-  LAKE/RIVER
-  MIXED CONIFER SWAMP
-  SHRUB SWAMP/EMERGENT MARSH
-  WET PRAIRIE



**Addison Oaks County Park
Presettlement Vegetation**

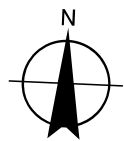


Oakland County Parks and Recreation

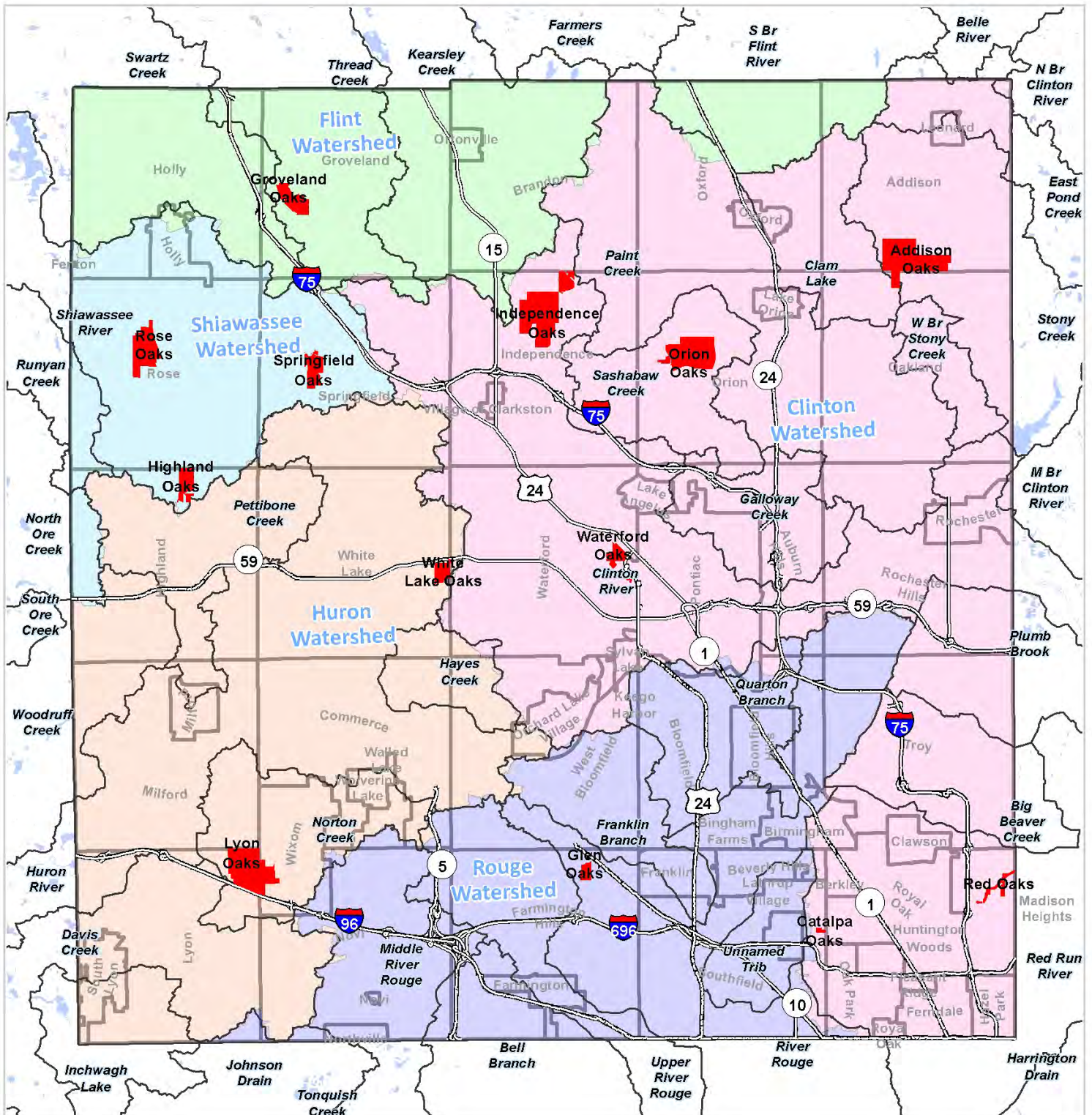
2800 Watkins Lake Road
 Waterford, MI
 248-858-0906

www.DestinationOakland.com

- Addison Oaks Park Boundary
- Priority One
- Priority Two
- Priority Three
- Lake/Pond



**Addison Oaks County Park
 MNFI Potential Natural Area**



Oakland County Parks and Recreation
 2800 Watkins Lake Road
 Waterford, MI
 248-858-0906
www.DestinationOakland.com

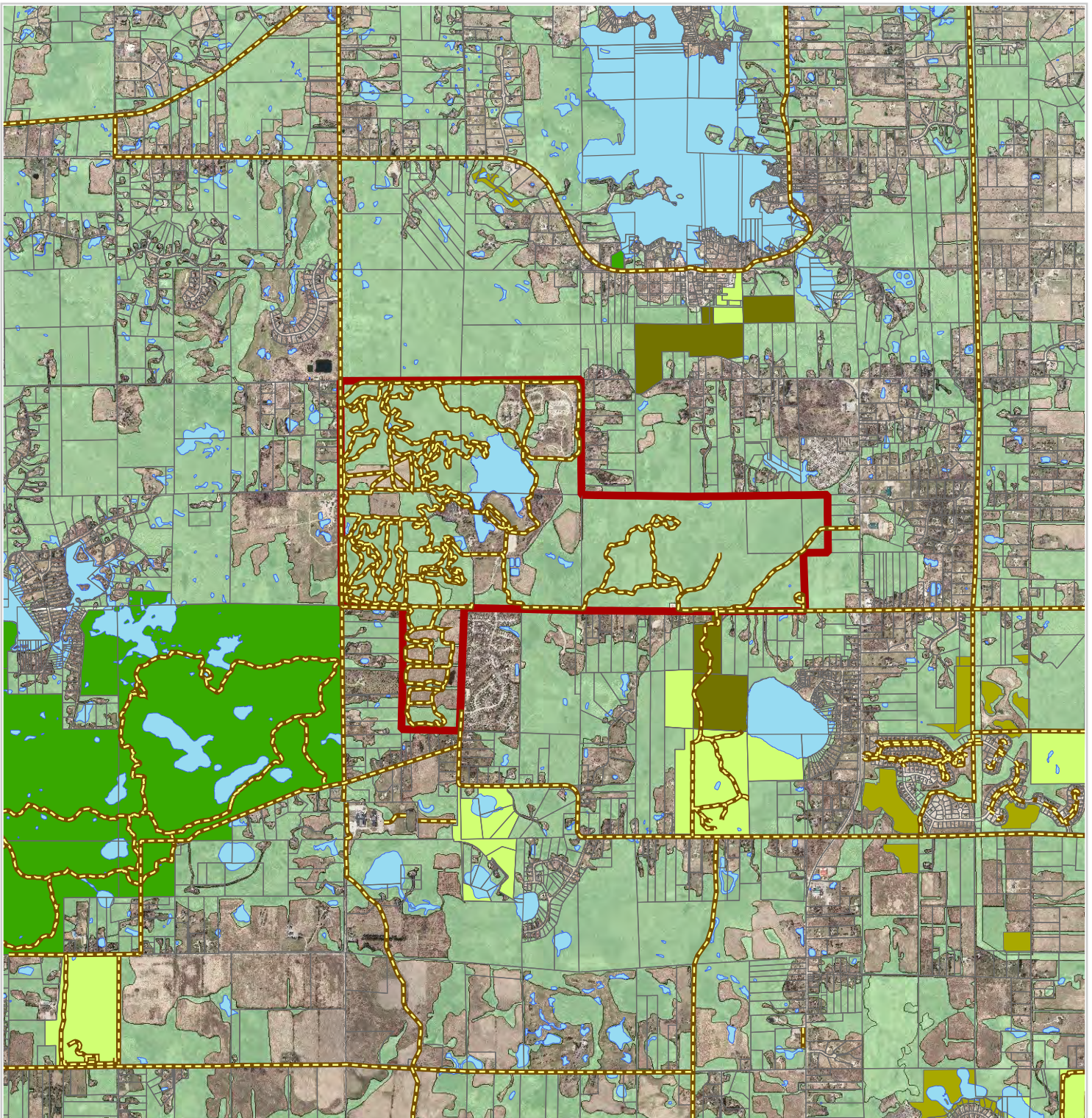


0 20,000 40,000 Feet

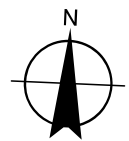
Oakland County Sub Watersheds

Watersheds

- Belle
- Clinton
- Flint
- Huron
- Rouge
- Shiawassee
- Subwatershed



-  Addison Oaks Park Boundary
-  Green Infrastructure
-  State Parks
-  Local Parks
-  Trail/Path
-  Conservation Easements
-  Lake/Pond



OAKLAND COUNTY PARKS

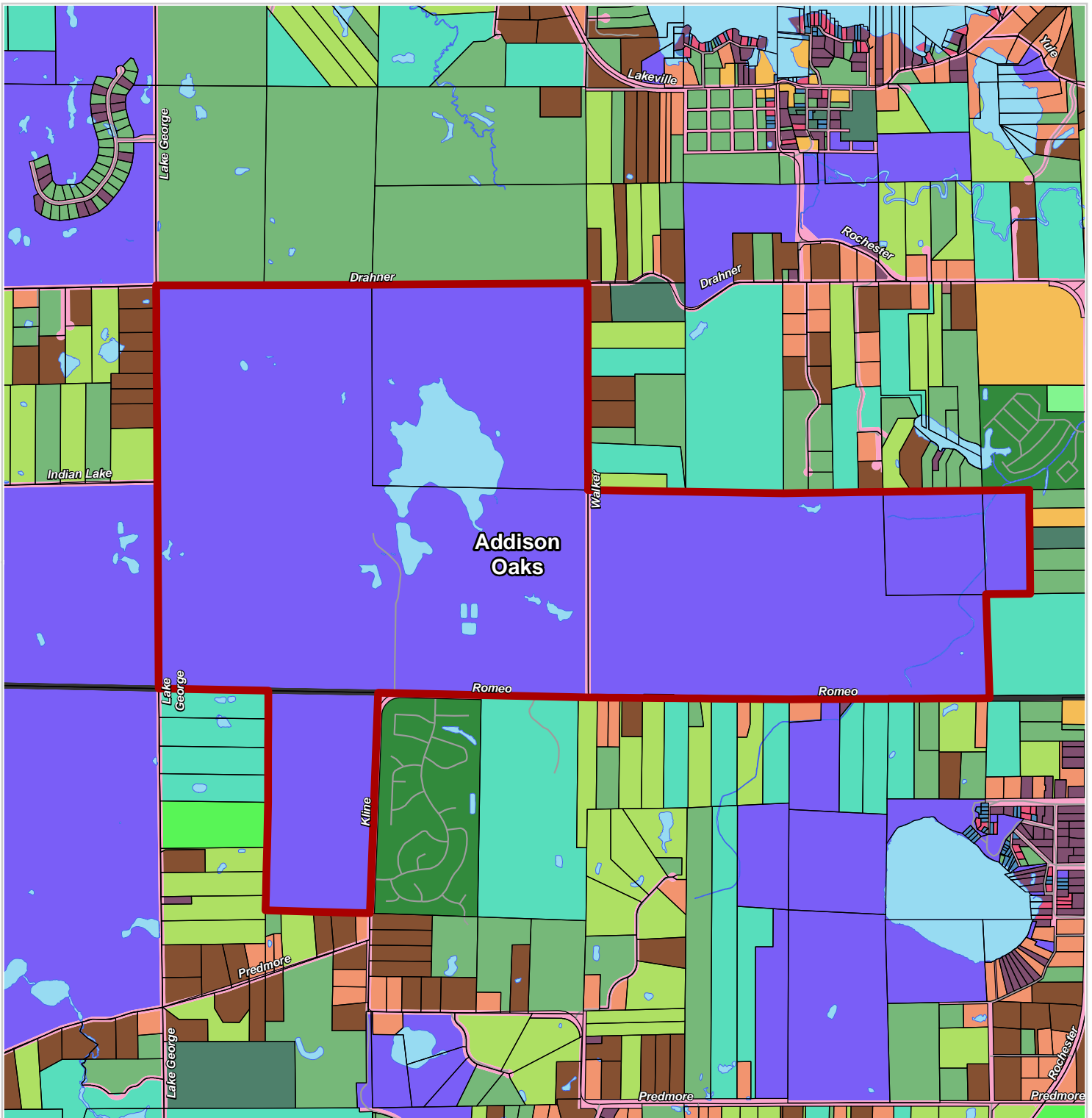
Oakland County Parks and Recreation

2800 Watkins Lake Road
Waterford, MI
248-858-0906

www.DestinationOakland.com



Addison Oaks County Park Green Infrastructure



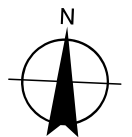
Oakland County Parks and Recreation

2800 Watkins Lake Road
Waterford, MI
248-858-0906

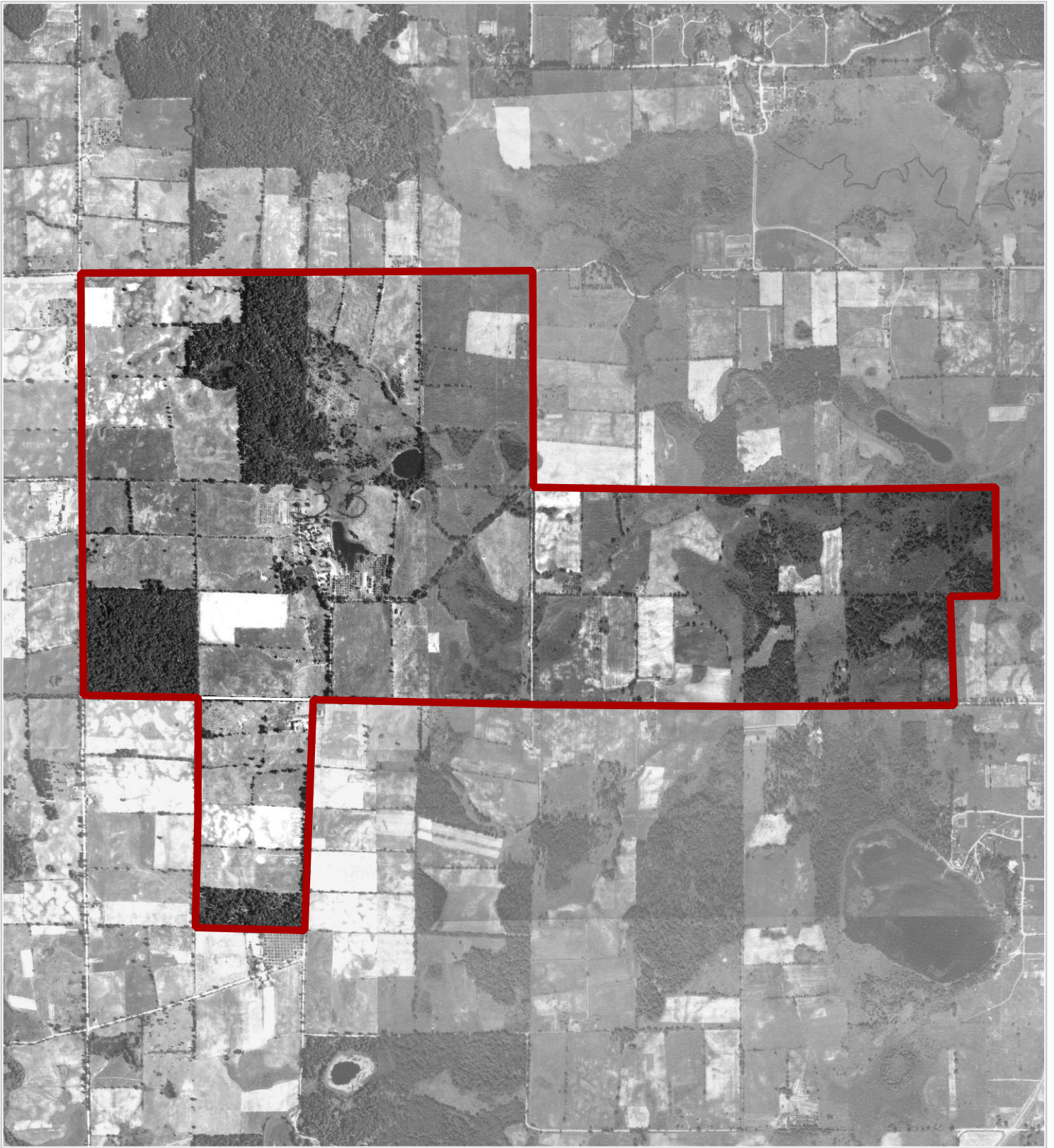
www.DestinationOakland.com

Addison Oaks Park Boundary

- Agricultural
- Commercial/Office
- S.F. More than one unit per parcel
- Single Family, 1 to 2.5 Acres
- Single Family, 14,000 to 43,559 sq. ft.
- Single Family, 2.5 to 5 acres
- Single Family, 5 to 10 acres
- Single Family, 8,000 to 13,999 sq. ft.
- Single Family, Greater than 10 acres
- Single Family, Less than 8,000 sq. ft.
- Transportation/Utility/Communication
- Vacant
- Recreation/Conservation
- Water
- Multiple Family
- Road Right-of-Way
- Railroad Right-of-Way
- Public/Institutional



**Addison Oaks County Park
2015 Land Use**



Oakland County Parks and Recreation

2800 Watkins Lake Road

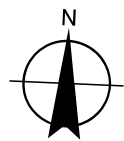
Waterford, MI

248-858-0906

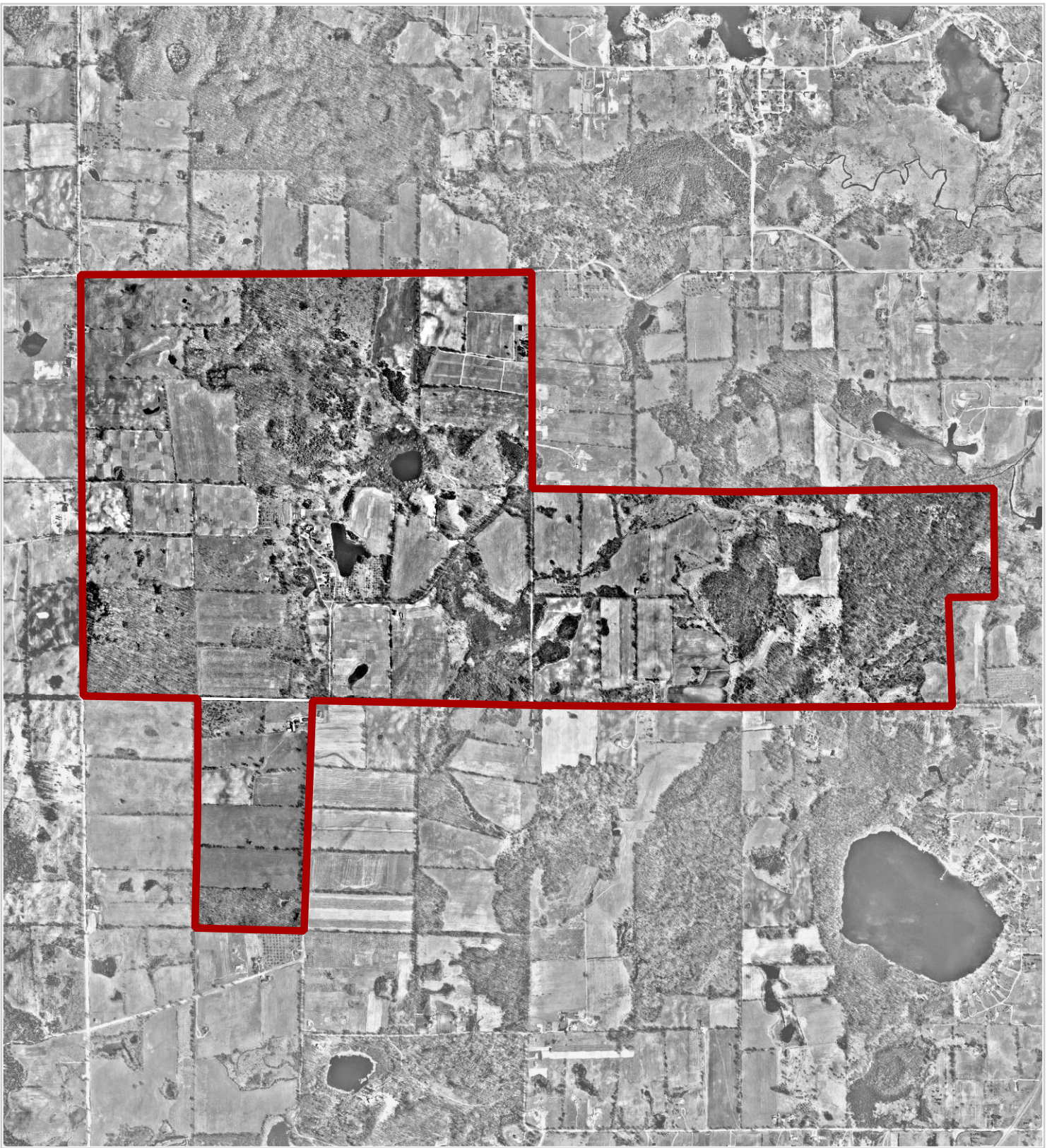
www.DestinationOakland.com



Addison Oaks Park Boundary



Addison Oaks County Park
1940 Aerial



Oakland County Parks and Recreation

2800 Watkins Lake Road

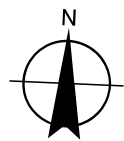
Waterford, MI

248-858-0906

www.DestinationOakland.com

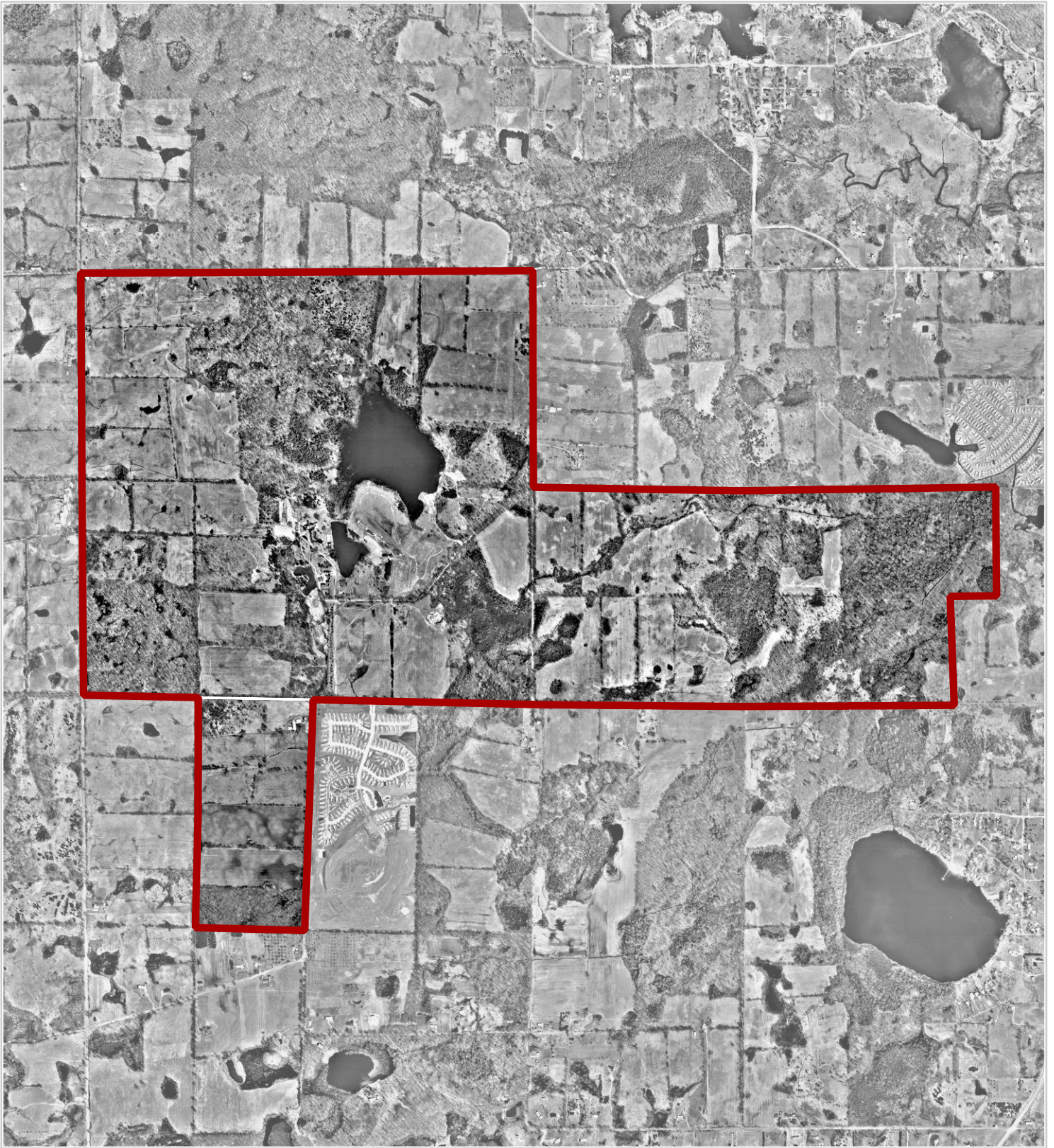


Addison Oaks Park Boundary



0 2,000 4,000 Feet

Addison Oaks County Park
1963 Aerial




Oakland County Parks and Recreation

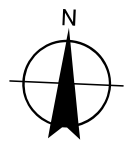
2800 Watkins Lake Road

Waterford, MI

248-858-0906

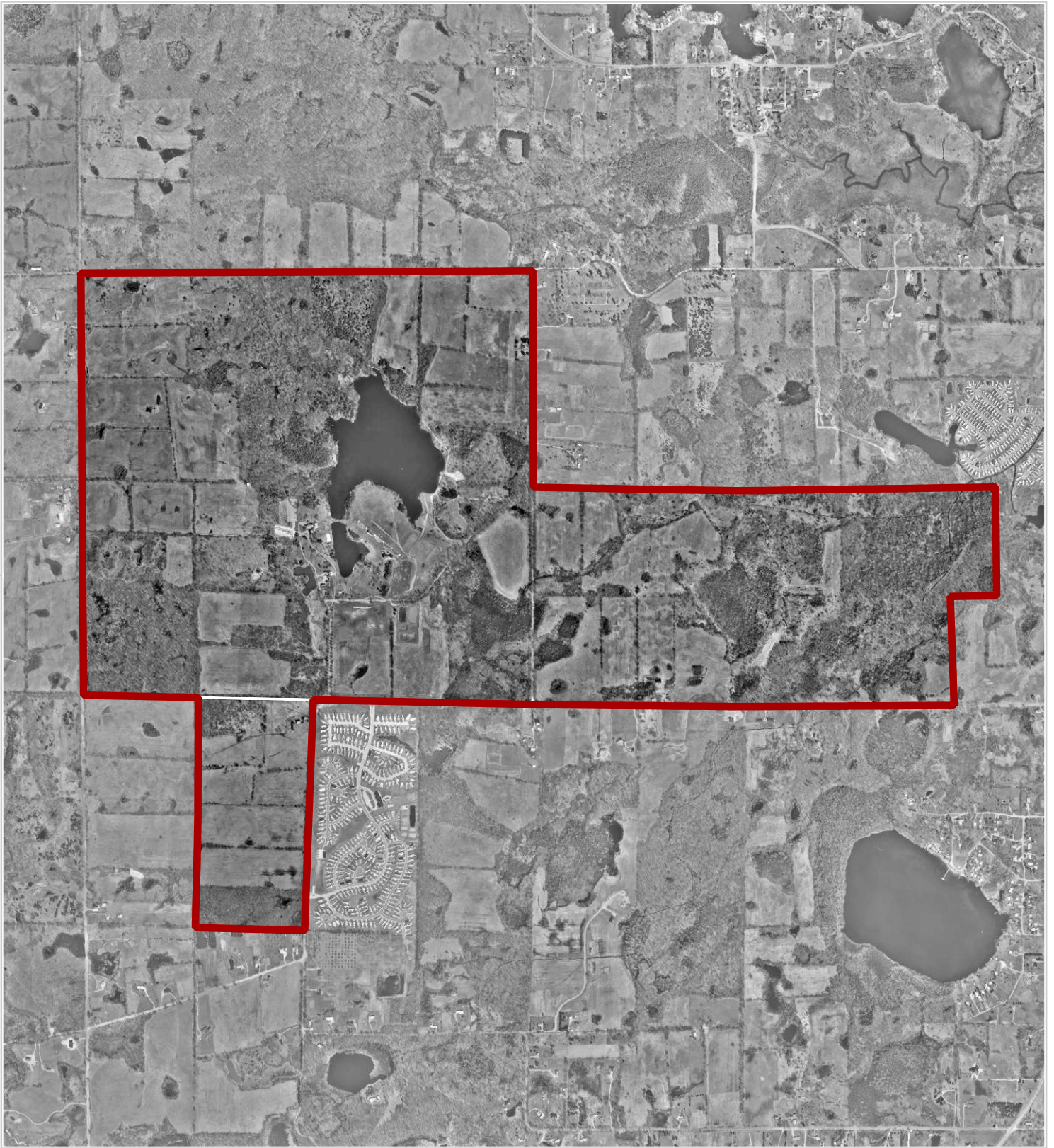
www.DestinationOakland.com

 Addison Oaks Park Boundary



0 2,000 4,000 Feet

**Addison Oaks County Park
1974 Aerial**



Oakland County Parks and Recreation

2800 Watkins Lake Road

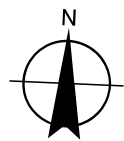
Waterford, MI

248-858-0906

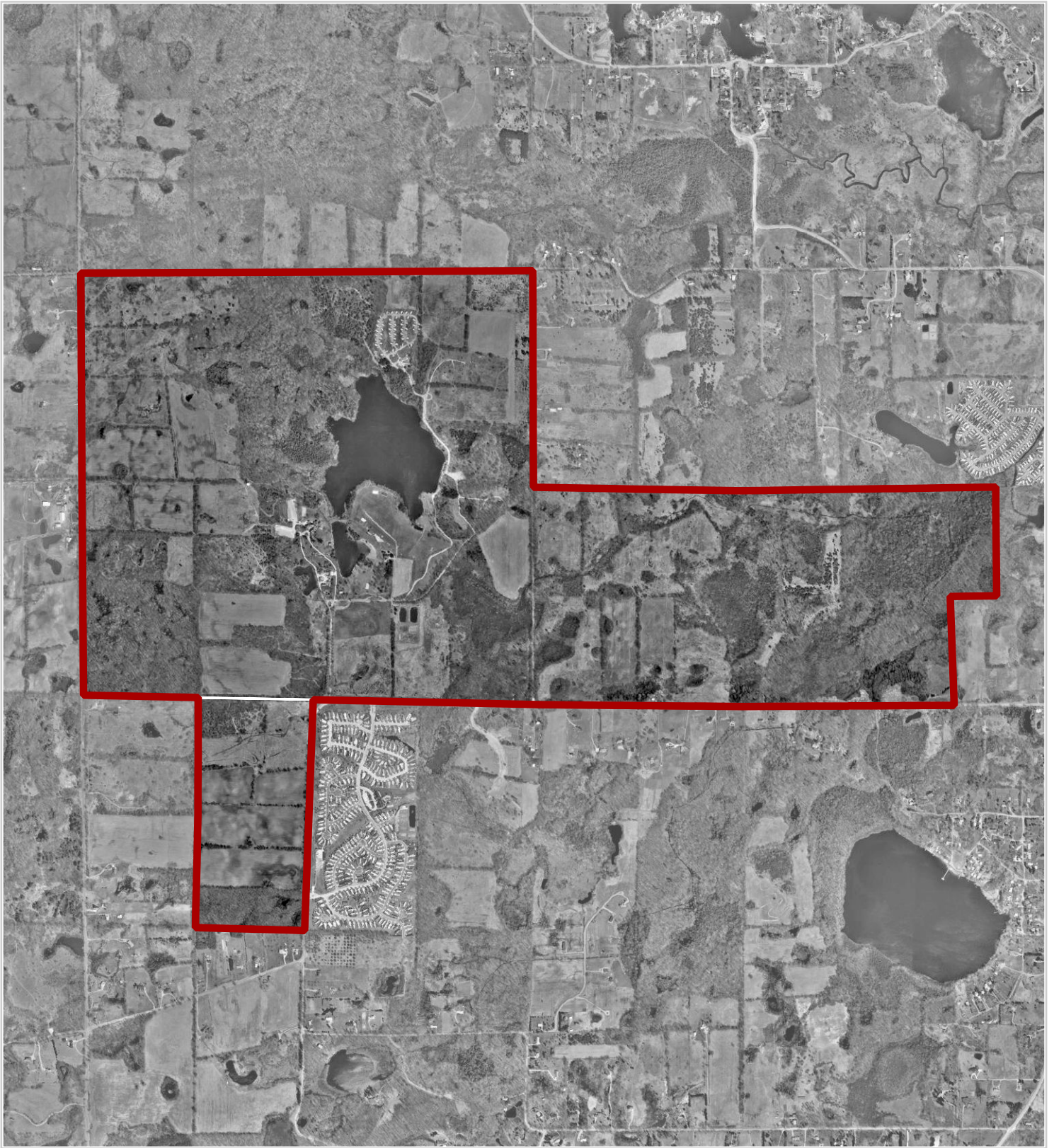
www.DestinationOakland.com



Addison Oaks Park Boundary



**Addison Oaks County Park
1980 Aerial**



Oakland County Parks and Recreation

2800 Watkins Lake Road

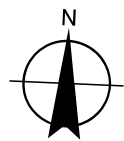
Waterford, MI

248-858-0906

www.DestinationOakland.com

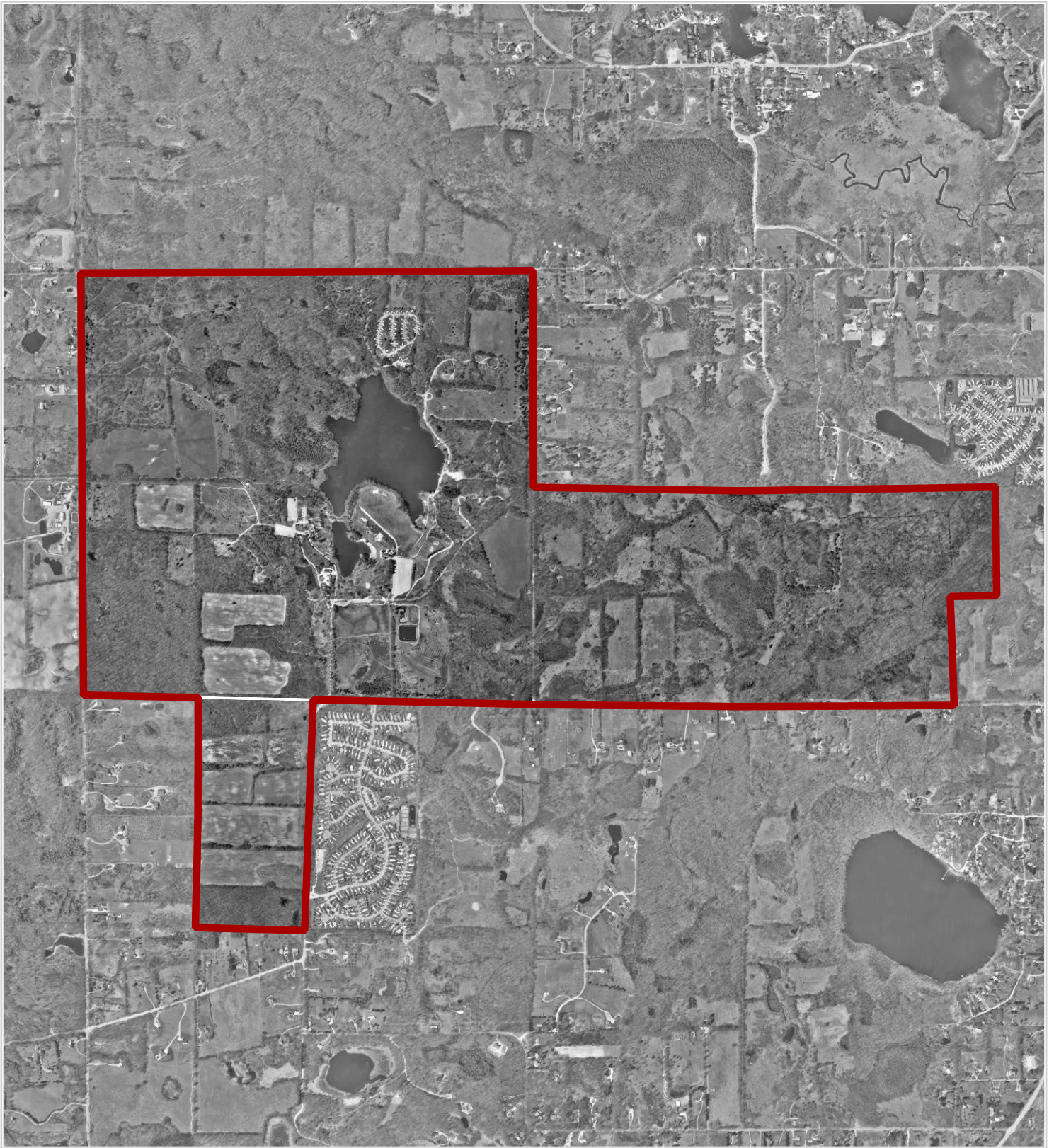


Addison Oaks Park Boundary



Page 17

**Addison Oaks County Park
1990 Aerial**



Oakland County Parks and Recreation

2800 Watkins Lake Road

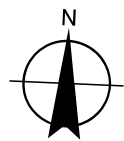
Waterford, MI

248-858-0906

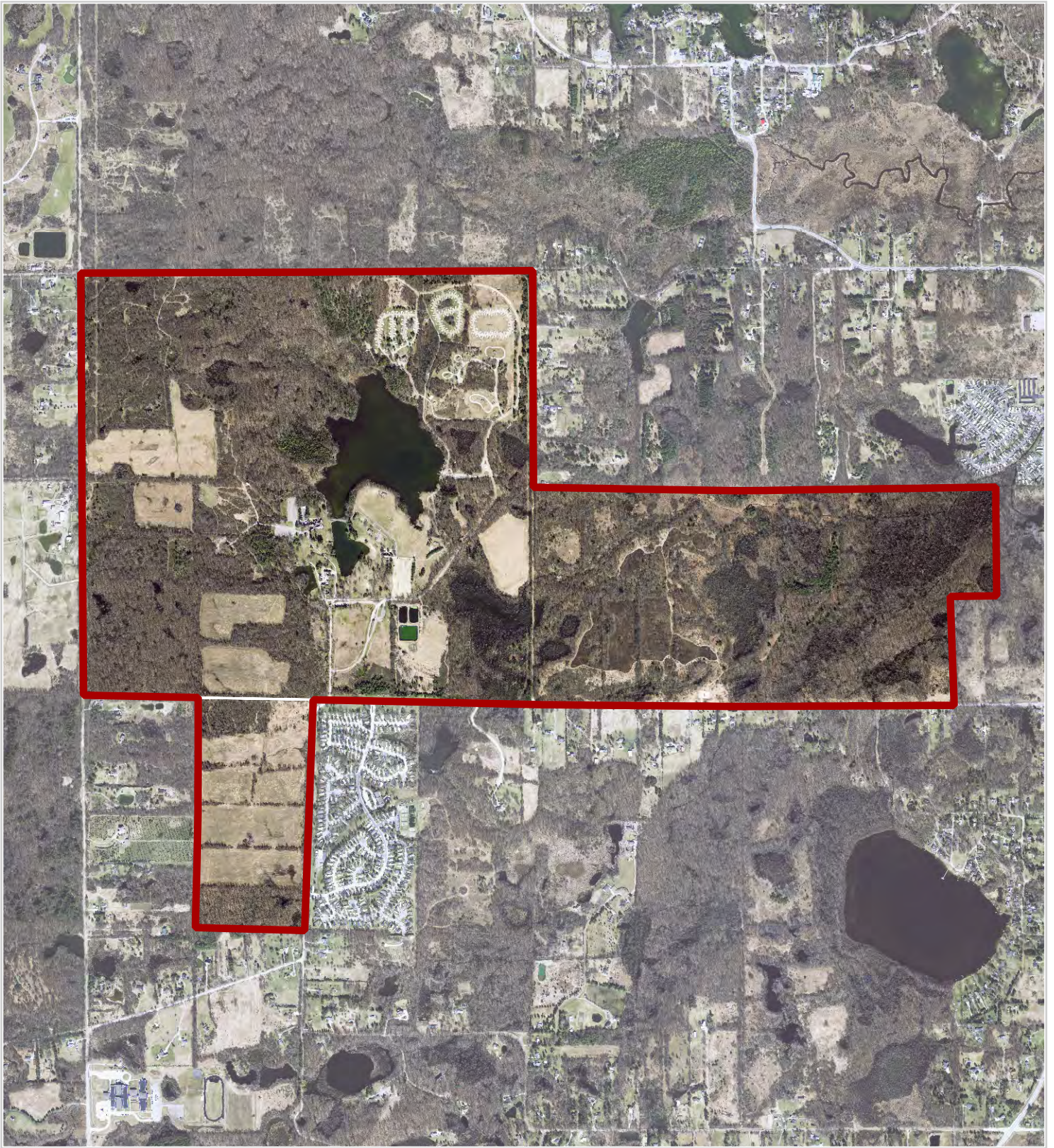
www.DestinationOakland.com



Addison Oaks Park Boundary



**Addison Oaks County Park
2000 Aerial**



Oakland County Parks and Recreation

2800 Watkins Lake Road

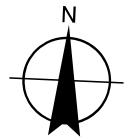
Waterford, MI

248-858-0906

www.DestinationOakland.com

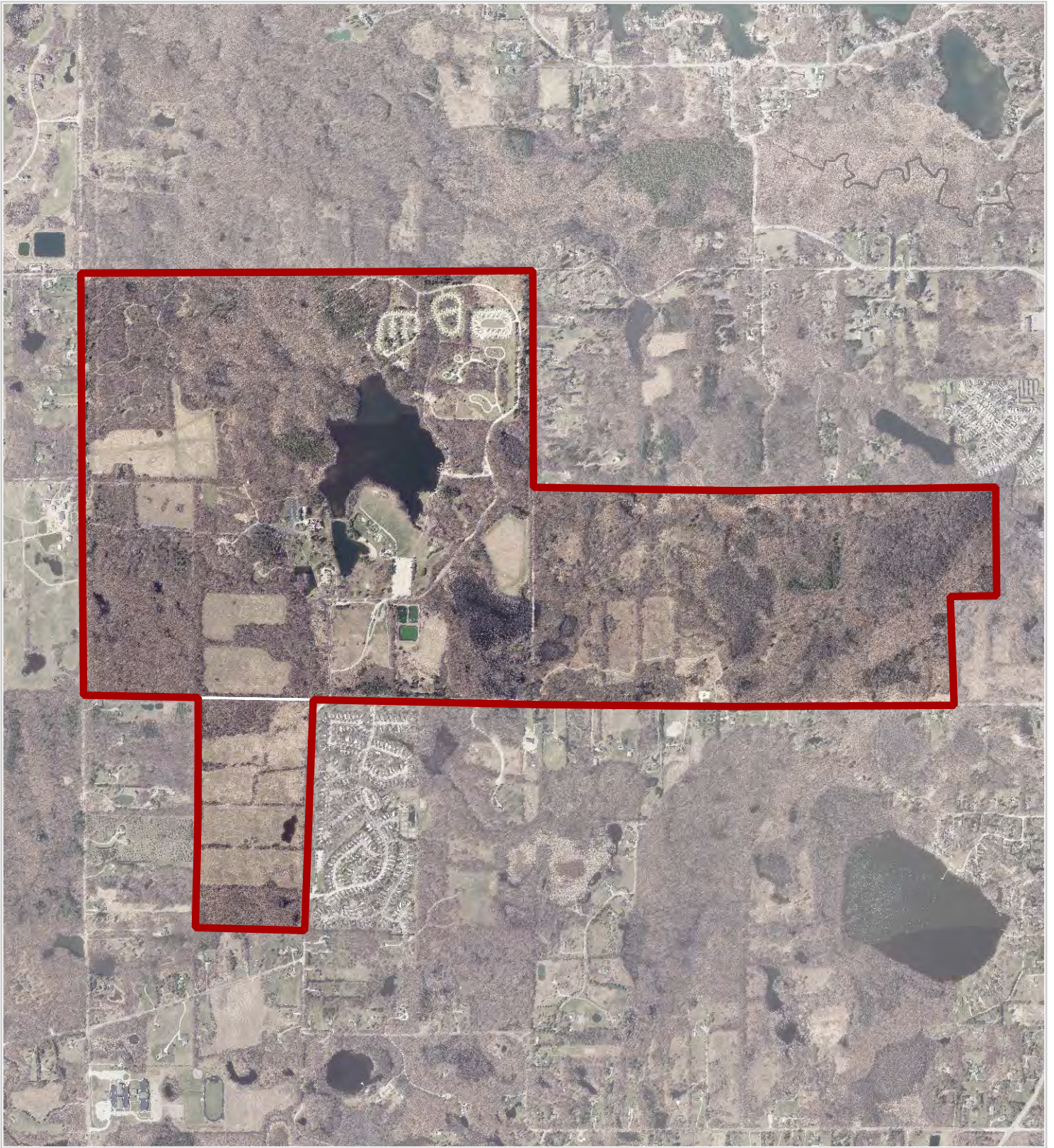


Addison Oaks Park Boundary



Page 19

**Addison Oaks County Park
2012 Aerial**



Oakland County Parks and Recreation

2800 Watkins Lake Road

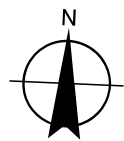
Waterford, MI

248-858-0906

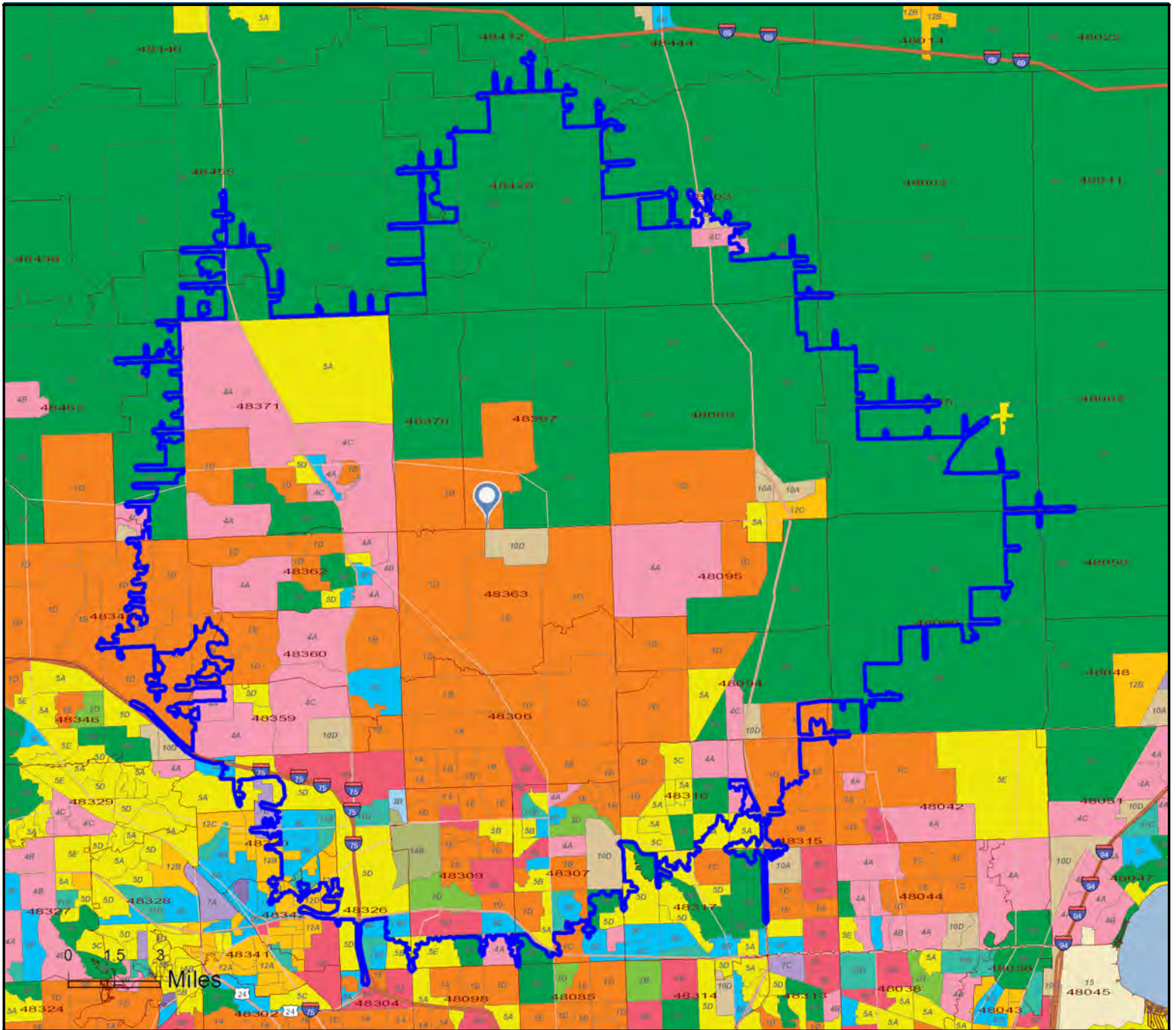
www.DestinationOakland.com



Addison Oaks Park Boundary

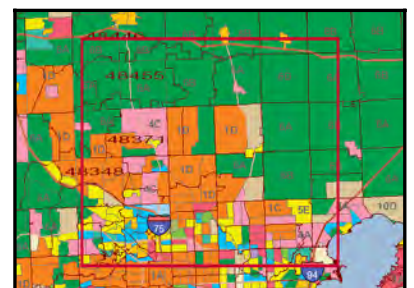


**Addison Oaks County Park
2015 Aerial**



Tapestry LifeMode

- | | | | |
|---|------------------------|---|----------------------------|
|  | L1: Affluent Estates |  | L8: Middle Ground |
|  | L2: Upscale Avenues |  | L9: Senior Styles |
|  | L3: Uptown Individuals |  | L10: Rustic Outposts |
|  | L4: Family Landscapes |  | L11: Midtown Singles |
|  | L5: GenXurban |  | L12: Hometown |
|  | L6: Cozy Country |  | L13: Next Wave |
|  | L7: Ethnic Enclaves |  | L14: Scholars and Patriots |





Tapestry Segmentation

Tapestry Segmentation represents the fifth generation of market segmentation systems that began 30 years ago. The 67-segment Tapestry Segmentation system classifies U.S. neighborhoods based on their socioeconomic and demographic composition. Each segment is identified by its two-digit Segment Code. Match the two-digit segment labels on the map to the list below. Click each segment below for a detailed description.

- Segment 1A (Top Tier)
- Segment 1B (Professional Pride)
- Segment 1C (Boomburbs)
- Segment 1D (Savvy Suburbanites)
- Segment 1E (Exurbanites)
- Segment 2A (Urban Chic)
- Segment 2B (Pleasantville)
- Segment 2C (Pacific Heights)
- Segment 2D (Enterprising Professionals)
- Segment 3A (Laptops and Lattes)
- Segment 3B (Metro Renters)
- Segment 3C (Trendsetters)
- Segment 4A (Soccer Moms)
- Segment 4B (Home Improvement)
- Segment 4C (Middleburg)
- Segment 5A (Comfortable Empty Nesters)
- Segment 5B (In Style)
- Segment 5C (Parks and Rec)
- Segment 5D (Rustbelt Traditions)
- Segment 5E (Midlife Constants)
- Segment 6A (Green Acres)
- Segment 6B (Salt of the Earth)
- Segment 6C (The Great Outdoors)
- Segment 6D (Prairie Living)
- Segment 6E (Rural Resort Dwellers)
- Segment 6F (Heartland Communities)
- Segment 7A (Up and Coming Families)
- Segment 7B (Urban Villages)
- Segment 7C (American Dreamers)
- Segment 7D (Barrios Urbanos)
- Segment 7E (Valley Growers)
- Segment 7F (Southwestern Families)
- Segment 8A (City Lights)
- Segment 8B (Emerald City)
- Segment 8C (Bright Young Professionals)
- Segment 8D (Downtown Melting Pot)
- Segment 8E (Front Porches)
- Segment 8F (Old and Newcomers)
- Segment 8G (Hardscrabble Road)
- Segment 9A (Silver & Gold)
- Segment 9B (Golden Years)
- Segment 9C (The Elders)
- Segment 9D (Senior Escapes)
- Segment 9E (Retirement Communities)
- Segment 9F (Social Security Set)
- Segment 10A (Southern Satellites)
- Segment 10B (Rooted Rural)
- Segment 10C (Diners & Miners)
- Segment 10D (Down the Road)
- Segment 10E (Rural Bypasses)
- Segment 11A (City Strivers)
- Segment 11B (Young and Restless)
- Segment 11C (Metro Fusion)
- Segment 11D (Set to Impress)
- Segment 11E (City Commons)
- Segment 12A (Family Foundations)
- Segment 12B (Traditional Living)
- Segment 12C (Small Town Simplicity)
- Segment 12D (Modest Income Homes)
- Segment 13A (International Marketplace)
- Segment 13B (Las Casas)
- Segment 13C (NeWest Residents)
- Segment 13D (Fresh Ambitions)
- Segment 13E (High Rise Renters)
- Segment 14A (Military Proximity)
- Segment 14B (College Towns)
- Segment 14C (Dorms to Diplomas)
- Segment 15 (Unclassified)